

# ATLANTIC TREASURES

aboard the SIX-STAR CRYSTAL SYMPHONY

## AIR/SEA PROGRAM

- **Personalized round-trip air options** to Lisbon, Portugal, from select North American gateway cities.
- **All transfers and baggage handling** between airports and piers for Air/Sea participants on days of embarkation/disembarkation.

## INCLUDED FEATURES

- Set sail from Lisbon for **13 nights** aboard the Six-Star **Crystal Symphony** and cruise the Atlantic Ocean.
- **Open bar service** throughout the ship.
- **All gratuities** for housekeeping, dining and bar staff.
- **Exceptional dining aboard** Crystal Cruises **featuring all meals.**
- Captain's Gala Welcome Aboard and Farewell Receptions.
- Exclusive AHI Welcome and Farewell Parties.
- **Gala entertainment nightly.**
- **Deluxe staterooms** with Egyptian cotton linens, TV/DVD, private bath with tub/shower, double basins, marble countertops, sitting area, security safe, direct-dial phone and refrigerator stocked with complimentary beverages.
- **Complimentary 24-hour room service.**
- **Seven restaurants** to suit your mood.
- Crystal Cruises' **Optional Shore Excursions** (offered at an additional cost) in each port of call and led by knowledgeable English-speaking guides.
- **Free motor coach shuttle service** to the town center in each port.
- Services of a dedicated **Passenger Service Representative** prior to departure.
- Services of an experienced **AHI Travel Director** throughout the trip.
- Complimentary travel wallet.
- Detailed travel and destination information to assist in your planning.

**September 5-19, 2017**

**From \$5,350**

VAT is an additional \$600 per person.

All prices quoted are in USD, per person, based on double occupancy and do not include the AHI FlexAir (unless otherwise stated). Single accommodations are an additional cost (limited availability).

Relax aboard the Six-Star Crystal Symphony as you embark on a thrilling Atlantic adventure. Begin in Lisbon, Portugal, a thriving capital once the center of a great empire, then head out into the Atlantic for the Azores, islands once threatened by countries and pirates, but now revel in grandeur. Explore Madeira, a favored retreat for Sir Winston Churchill, then sail to the Canary Islands, a colorful archipelago wrought from volcanic activity. Discover Arrecife, Spain, a bustling port that embraces its past and welcomes the future, before cruising to Morocco, where you will stop in the sun-soaked resort of Agadir and Casablanca, a blend of French and Arabic influences. Be captivated by the beauty, elegance and attention to every detail that has earned the Crystal Symphony a worldwide reputation for excellence!



## PROGRAM HIGHLIGHTS

- Take advantage of **2-for-1 pricing.**
- **Open bar service** and **all gratuities** for the housekeeping, dining and bar staff.
- **One complimentary reservation** for each specialty restaurant, including Prego, Silk Road and The Sushi Bar.
- Enjoy a refined, but relaxed dress code with elegant casual attire acceptable on all evenings and at least one Black Tie Optional evenings.
- Experience why world-renowned **Crystal Cruises** has received the ranking of **"World's Best"** from Travel + Leisure for 20 consecutive years as you cruise round-trip from **Lisbon, Portugal.**
- Attend two special **AHI Parties** and benefit from an **AHI Travel Director** who is aboard Crystal Symphony to ensure your special treatment.
- **Cruise the Canary Islands**, home to scenic and cultural treasures, and explore sites in beautiful **Morocco.**



## ITINERARY

- Day 1** Depart for Lisbon, Portugal<sup>†</sup>
- Day 2** Arrive Lisbon | Transfer<sup>†</sup> and embark Crystal Symphony
- Day 3** Lisbon
- Day 4** Cruising the Atlantic Ocean
- Day 5** Azores | Ponta Delgada, The Azores
- Day 6** Praia da Vitoria | Azores
- Day 7** Cruising the Atlantic Ocean
- Day 8** Madeira | Funchal, Portugal
- Day 9** Santa Cruz de la Palma, Spain
- Day 10** Santa Cruz de Tenerife, Canary Islands
- Day 11** Canary Islands | Arrecife, Spain
- Day 12** Agadir, Morocco
- Day 13** Casablanca
- Day 14** Cruising the Atlantic Ocean
- Day 15** Lisbon, Portugal/Disembark ship | Transfer to airport and return to gateway city<sup>†</sup>

**Note:** Program Itinerary is subject to change due to local conditions.

<sup>†</sup> Provided for Air/Sea participants.

## COMPARE WITH OTHER CRUISE LINES

ONBOARD AMENITIES	CRYSTAL CRUISES	PREMIUM CRUISE LINES
Gratuities for housekeeping, bar, dining and Penthouse butler staff	<b>Complimentary</b>	Additional charge
Fine wines, champagne and premium spirits throughout the ship	<b>Complimentary</b>	Additional charge
Bon voyage champagne	<b>Complimentary</b>	Additional charge
Wine tasting seminars	<b>Complimentary</b>	Additional charge
Returning guest reception	<b>Complimentary</b>	No-host bar
Sodas/bottled water/juices	<b>Complimentary</b>	Additional charge
Specialty coffees including espresso beverages	<b>Complimentary</b>	Additional charge
Wine corkage	<b>Complimentary</b>	Additional or not allowed
Premium ice cream, yogurt and smoothie bar	<b>Complimentary</b>	Additional charge
In-stateroom dining (evening)	<b>Order from Crystal Dining Room</b>	Order from limited room service menu
City center transportation	<b>Complimentary</b>	Additional charge
Yoga and pilates instruction	<b>Complimentary</b>	Additional charge
Golf clinics/lessons	<b>Complimentary</b>	Additional charge: golf clinics with pro, simulators up to \$20
Enrichment programs	<b>Complimentary</b>	Additional charge up to \$50 per person
Self-service laundry	<b>Complimentary</b>	Additional charge
In-stateroom select beer, wine and spirits menu	<b>Complimentary</b>	Additional charge
In-Penthouse select fine wines and spirits menu	<b>Complimentary</b>	Additional charge
Specialty restaurant(s)	<b>One complimentary reservation</b>	Additional charge of up to \$30 per person
Premium poolside real estate	<b>Complimentary</b>	Additional charge for the best locations near the pool
Included Wi-Fi usage: Deluxe stateroom and Penthouse guests, 60 minutes daily; Penthouse suites, 90 minutes daily.	<b>Complimentary</b>	Additional charge on most cruise lines for any usage

*Crystal Cruises are romantic, full of life, an absolute pleasure. The quality and choices offered are extraordinary. When you embark on a Crystal cruise, you slip into a world of relaxed luxury designed to inspire your spirit, enrich your mind, ignite your passion and stimulate your senses.*

*Crystal Symphony is one of the most spacious ships at sea. Enjoy its fresh but classic interiors featuring beautiful finishes and comfortable, modern furnishings. Crystal crew members love what they do and it shows with their personal, gracious service. One of the industry's highest crew-to-guest ratios ensures a more personalized experience.*

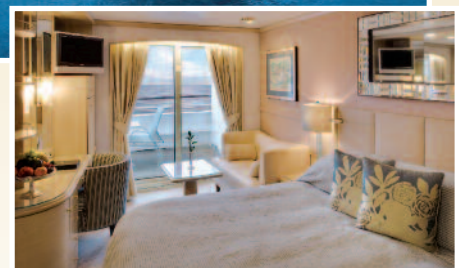
*Enjoy exceptional restaurants. The Crystal Dining Room offers the freshest foods of the season, exquisitely prepared and presented. Prego serves sumptuous Italian cuisine under the direction of Valentino restaurateur Piero Selvaggio. Nobu Matsuhisa of Nobu Restaurants developed the popular Silk Road and The Sushi Bar. Also enjoy complimentary fine wines and premium spirits throughout the ship.*

*Crystal's new relaxed dress code gives passengers more flexibility than ever. Most evenings the attire is Crystal Casual, a dressed-up version of casual. Guests who enjoy a glamorous night out can still dress to the nines on Black Tie Optional evenings.*

*However you choose to spend your time on board, the Crystal Symphony will be your home away from home — and dare it be said, even better, because Crystal takes care of you like no one else.*



**CRYSTAL SYMPHONY**



Our mission is to provide you with the most up-to-date information at all times. While the information in this flier is correct at the time of creation, we encourage you to visit our website to ensure that you receive the most current information.