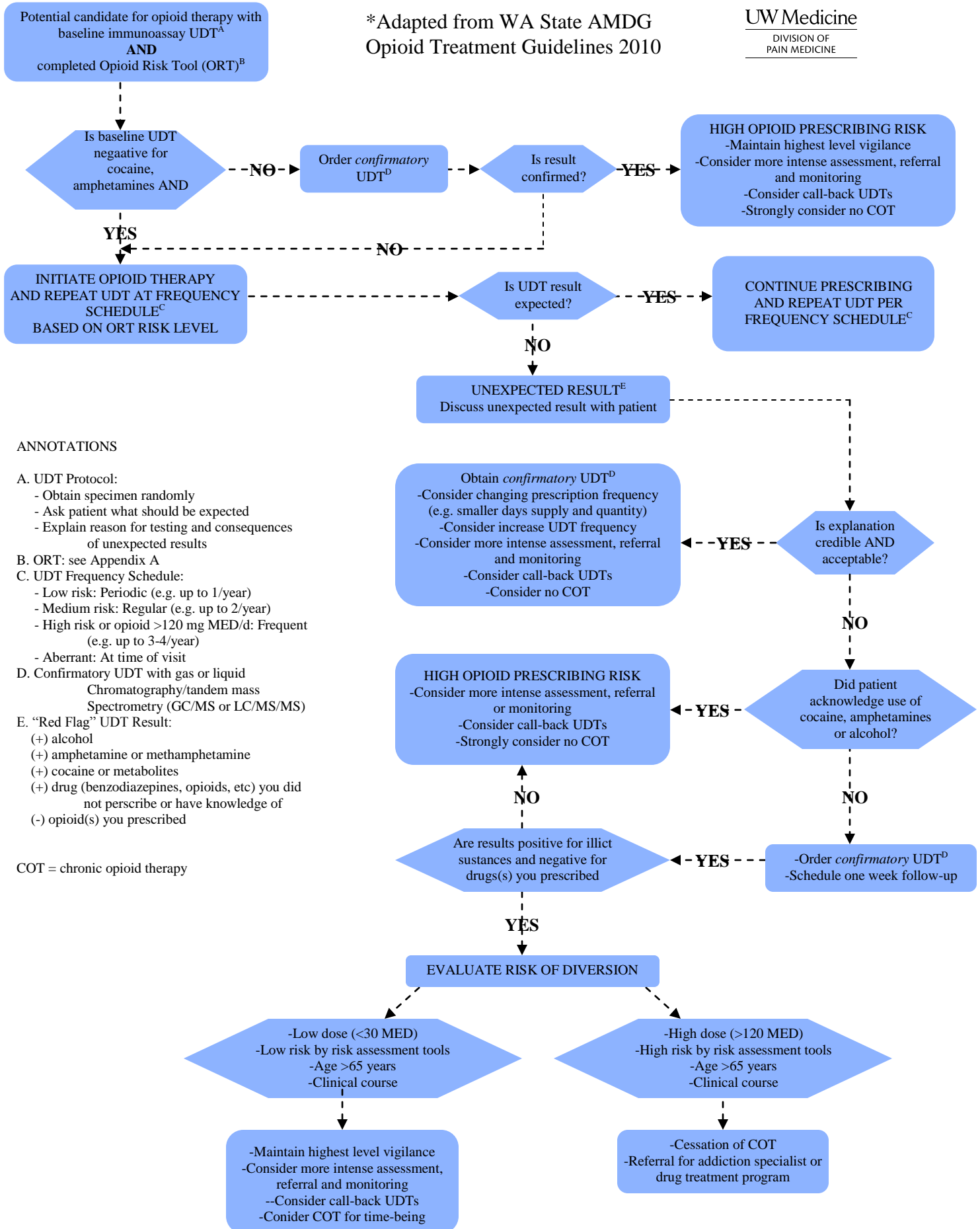


Urine Drug Testing (UDT) Interpretative Algorithm for Monitoring Opioid Treatment*

*Adapted from WA State AMDG
Opioid Treatment Guidelines 2010

UW Medicine
DIVISION OF
PAIN MEDICINE



ANNOTATIONS

A. UDT Protocol:

- Obtain specimen randomly
- Ask patient what should be expected
- Explain reason for testing and consequences of unexpected results

B. ORT: see Appendix A

C. UDT Frequency Schedule:

- Low risk: Periodic (e.g. up to 1/year)
- Medium risk: Regular (e.g. up to 2/year)
- High risk or opioid >120 mg MED/d: Frequent (e.g. up to 3-4/year)
- Aberrant: At time of visit

D. Confirmatory UDT with gas or liquid

Chromatography/tandem mass Spectrometry (GC/MS or LC/MS/MS)

E. "Red Flag" UDT Result:

- (+) alcohol
- (+) amphetamine or methamphetamine
- (+) cocaine or metabolites
- (+) drug (benzodiazepines, opioids, etc) you did not prescribe or have knowledge of
- (-) opioid(s) you prescribed

COT = chronic opioid therapy