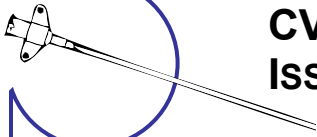


CQI Alerts

Dec
2006

OBSERVATIONS BY THE CONTINUOUS QUALITY IMPROVEMENT PROGRAM FOR UWMC ANESTHESIOLOGY



CVP / PA CATHETER ISSUES

TRANSDUCE YOUR CENTRAL LINES

Hypotensive / hypoxemic patients may have minimally pulsatile, dark arterial blood. Always use pressure waveform monitoring prior to insertion of central catheters.

LOCK SWAN-GANZ CATHETERS

Use a yellow Swan Ganz shield (aka "swandom") and lock down the catheter to prevent slippage. Recheck the lock prior to moving the patient between beds.

SINGLE LUMEN CATHETERS FOR EJ PLACEMENTS

Longer catheters may prevent dislodgement and infiltration that may occur during external jugular vein catheterization with shorter catheters.

Consider the single lumen femoral artery catheter set (18ga, 12cm catheter, model #C-PMS-40-FA) or the central venous catheter set (16ga, 15cm catheter, model #C-PMS-501J) for EJ placement.

ARROW-HOWES MULTI-LUMEN CVP KIT ISSUES

The AK-15703-SP kit has two 2.5 inch 18ga needles: one with a catheter and one without a catheter.

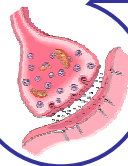
- The needle with no catheter: a J-tip wire will pass through this needle.
- The needle with a catheter: a J-tip wire will not pass through this needle. To pass the wire, slide the catheter off the needle into the vein, pull out the needle leaving the catheter in the vein and pass the J-tip wire through the catheter and into the vein.

With either approach, remember to insert the small side-port connector between the aspirating syringe and the needle or catheter for transducing intravascular pressure.



DON'T OPEN SUPPLIES PREMATURELY

Don't open supplies and block trays for your next patient in the OR while your current patient is still in the operating room. Your next procedure may change and unsterile supplies and trays may need to be discarded. Please limit waste.



MUSCLE CRAMPS AND SUCCINYLCHOLINE

Using a defasciculating dose of non-depolarizer prior to succinylcholine can prevent painful postoperative muscle cramps.

- Rocuronium 4mg for defasciculation has an onset time of about 2 minutes. By comparison, vecuronium or pancuronium take about 6 minutes before onset and are less effective in preventing fasciculations.
- Tell patients that they may feel weak or have double vision. Some patients mistake this feeling for intraoperative awareness under anesthesia, so it's best to prepare the patient emotionally preoperatively for the experience.

BROKEN DO NOT USE	
DATE:	PHONE:
DEPT/CONTACT:	
ITEM:	
CRITICAL: (====) Yes No	
INSTRUMENT SET:	
ASSEMBLED BY:	

TAG BROKEN EQUIPMENT

When you find broken equipment, tag it with the "BROKEN DO NOT USE" labels. Untagged broken equipment may just be cleaned and offered to someone else later on.