

Capital Hill

# Co-Housing

Case Study

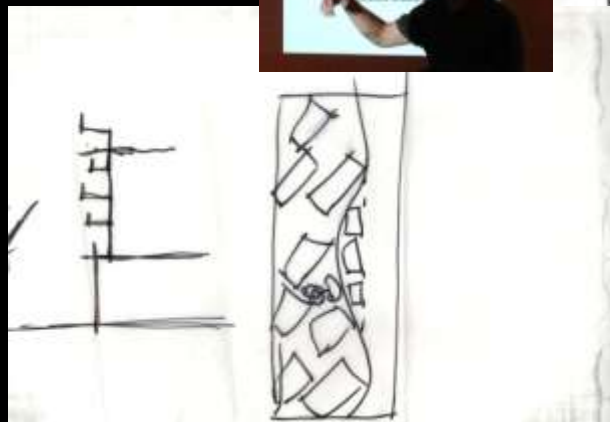
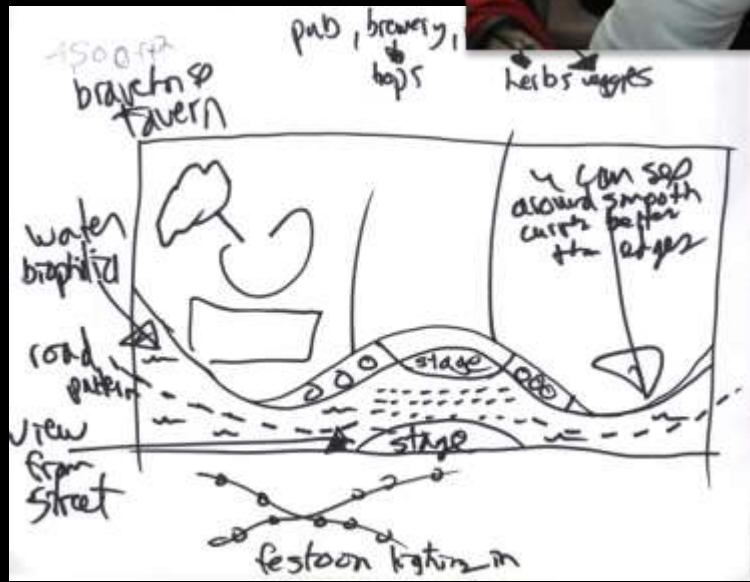
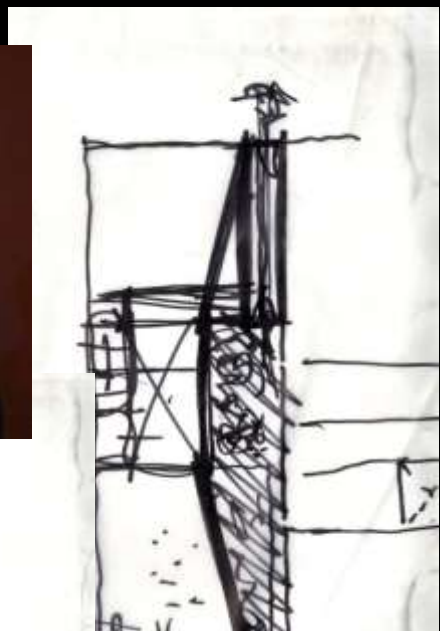
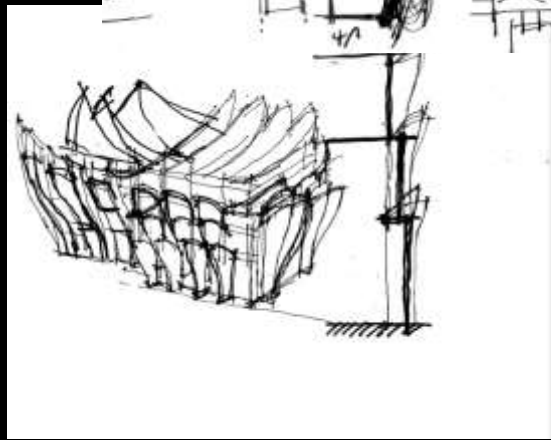
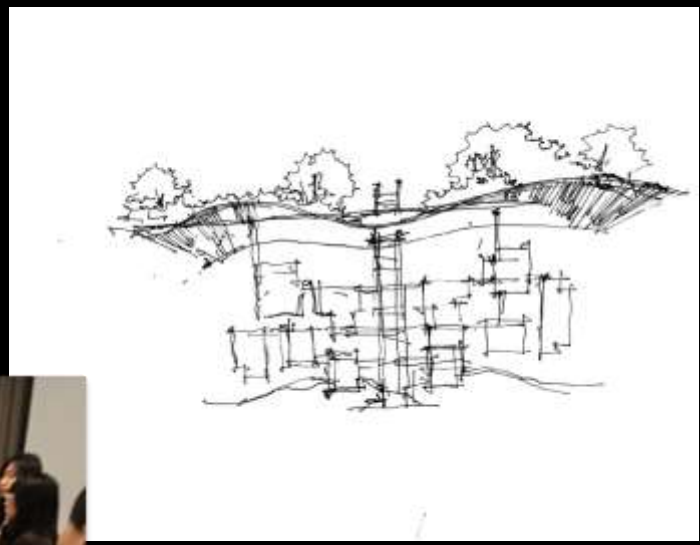
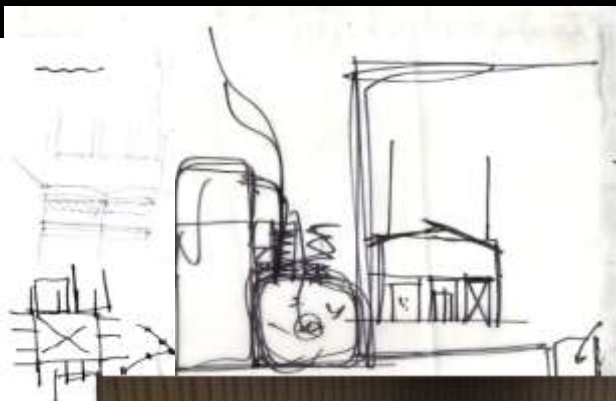
“共栖”

国会山  
式社区  
案例研究

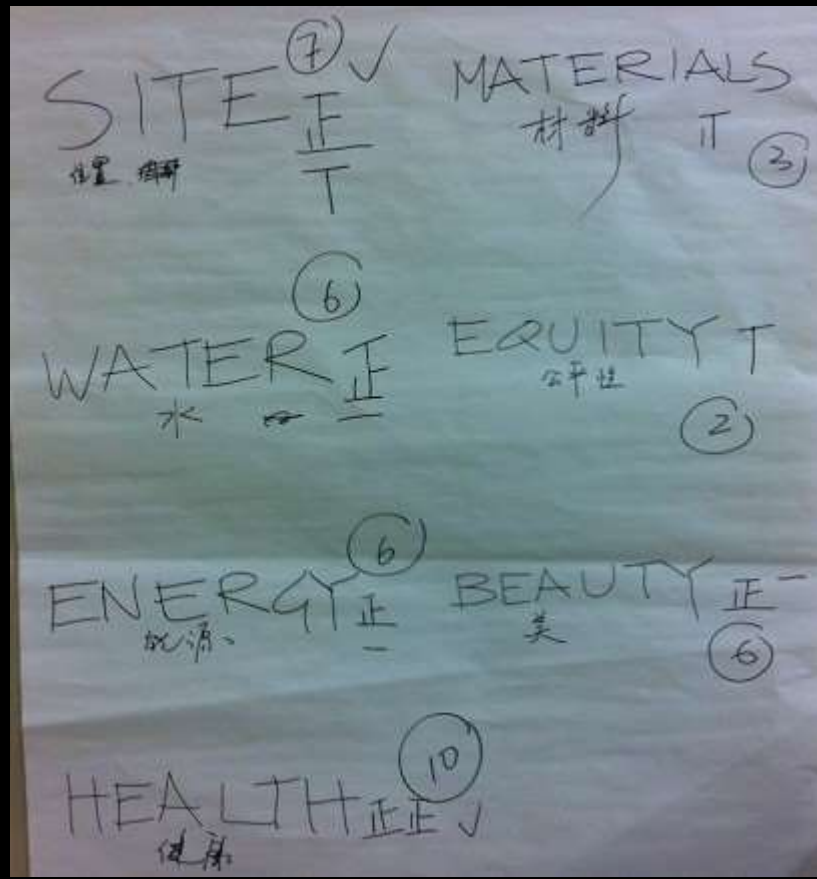
# Capitol Hill Cohousing Charrette

Oct 12-13, 2012





# Petals We Pick 摘取的花瓣



# Site

- SITE
- topography - what do the <sup>elderly</sup> ~~elderly~~ do?
  - \* elevator vs. stairs do?
  - bikes
  - internal connectivity/mobility
  - organization of transport - green space to play (grass)
  - entrance/exit
  - community space buffer on 2nd floor
  - place for children
  - \* community balcony
  - storage
  - broaden sidewalk - design for accessibility
  - \* fire pit
  - fire escape
  - internet cafe

# 场地

- 场所(地)
- 入口/出口
  - 交通组织
  - 地形 (地下室)
  - 露台/community balcony
  - 车库
  - 电梯 vs. 楼梯
  - 中庭
  - 自行车
  - 架空层
  - 烧烤 fire pit
  - 儿童活动区 (公共空间)
  - 阳台/飘窗
  - 储藏室
  - 人行道
  - 消防设施/雨\*
  - 无障碍设施
  - 公共绿地(花园)
  - 网吧
  - 逃生楼梯

# Materials

- Materials
- glass - 3 or 4 types of materials
  - reuse
  - wood - heavy timber
  - is steel frame sustainable?
  - copper-decoration
  - Brick?
  - temperature retainment
  - view from other sites towards our site
  - chemicals in materials
  - make <sup>visually</sup> compatible w/ adjacent buildings
  - non slippery - safe for residents
  - design responds to context

# 材料

- 材料
- 玻璃
  - 可再生
  - 石膏
  - 木材
  - 钢材?
  - 铜(装饰)
  - Brick
  - 保温
  - 长期维护对外界影响
  - 化学材料
  - 对周围房子产生影响
  - 不要大面积使用

# Health

空气/阳光/朝向  
 噪音/植物/绿化  
 (无烟)/健身房/温控  
 交流(活动)空间/心理健康  
 安全/娱乐

# 健康

Health

- b stories
- physical activity
- design scale
- common space
- psych health
- safety
- \* daylight
- N/S orientation
- fresh air
- smoking?
- NOISE
- plants/vegetation
- cooling/heating

# Beauty


美观(化)

- 居民的设计观点  
 (提供几个选项)

ONE 现代独特  
 简洁

Two 主题 theme  
 Three 材料 material  
 color

美观(化)  
 方向  
 垂直绿化  
 建筑



# 美观

BEAUTY

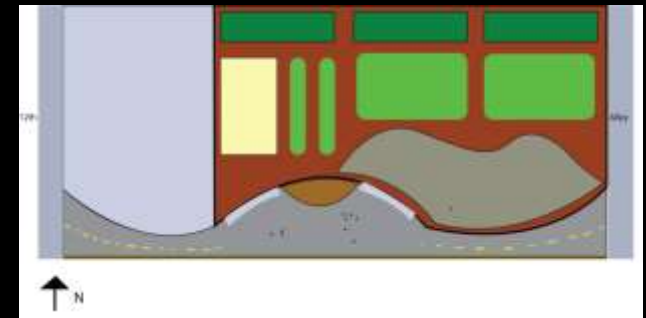
- residents idea of beauty
- unique
- contemporary
- simple
- communication of biophilic philosophy
- petals physically in building
- human oriented
- cosy, comfortable, friendly
- roof-green color → park on top
- consider aerial view
- keep original building on bottom
- color, theme, materials
- green wall, vertical
- solar panels



# Urban Agriculture Network



- Existing
- Cohousing Case Study
- Future Sites
- Farmers Market

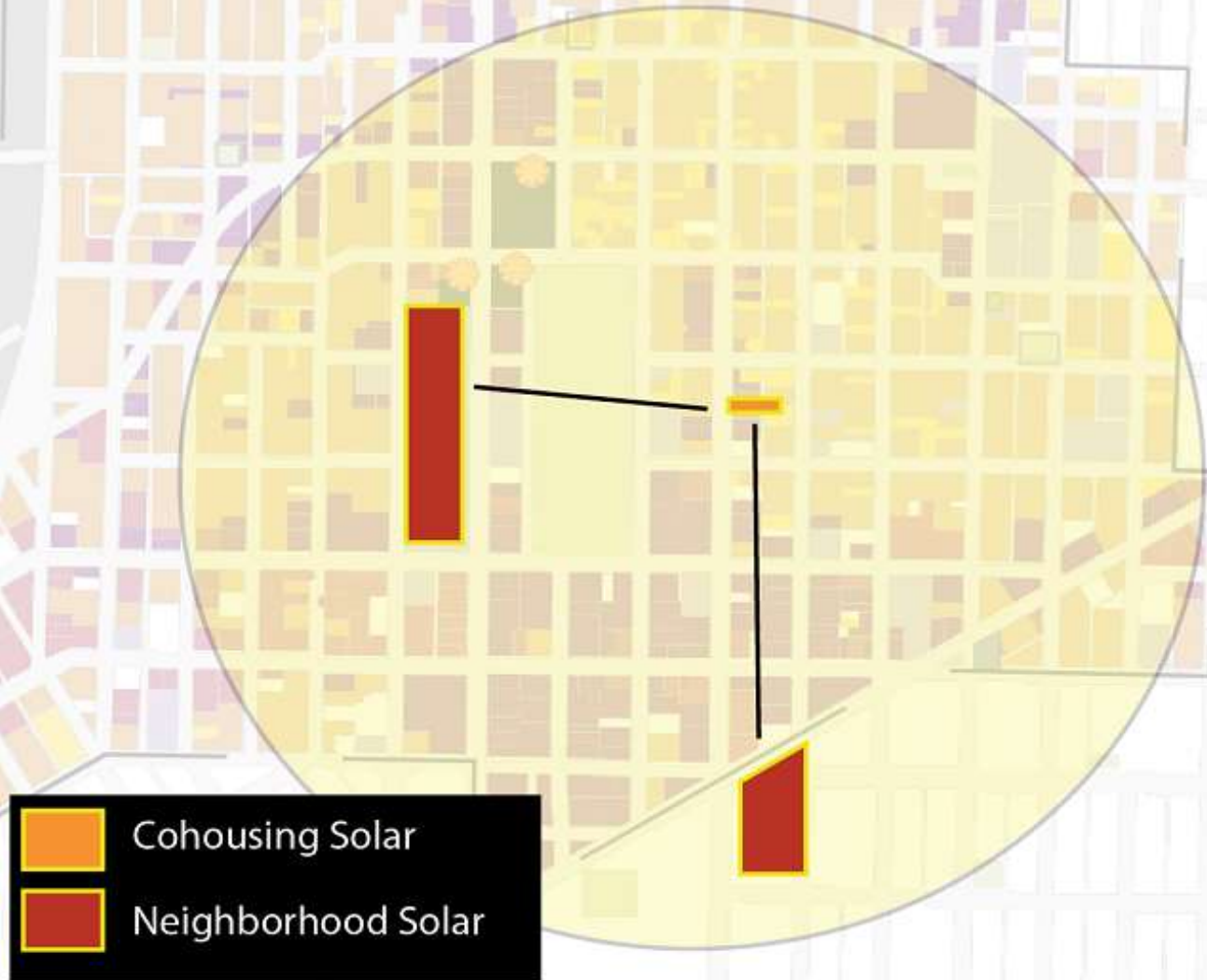


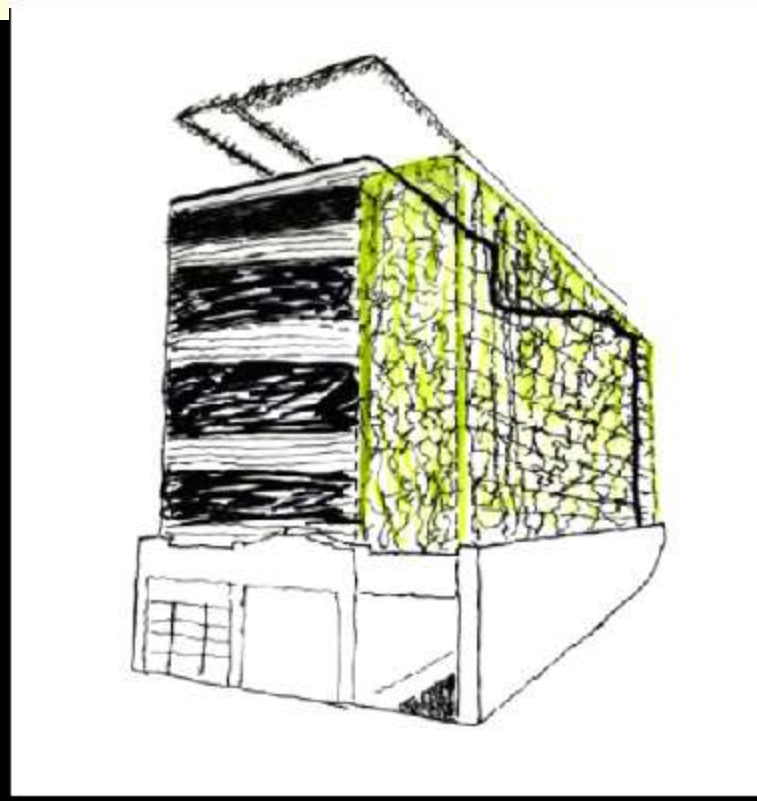
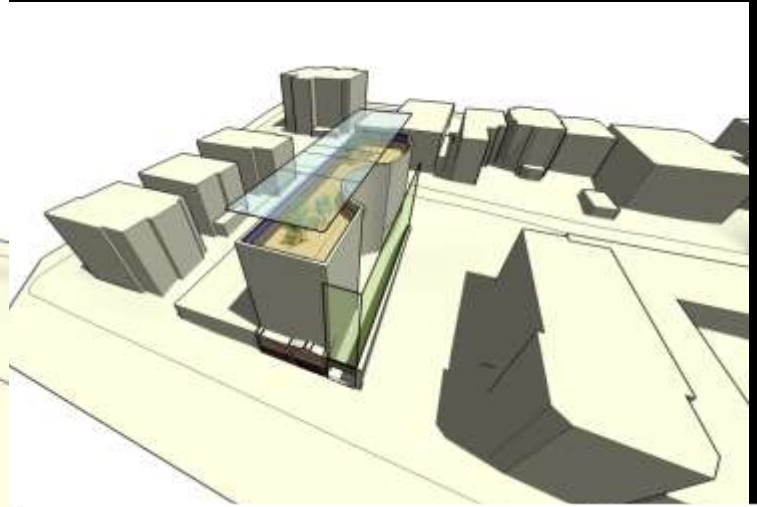
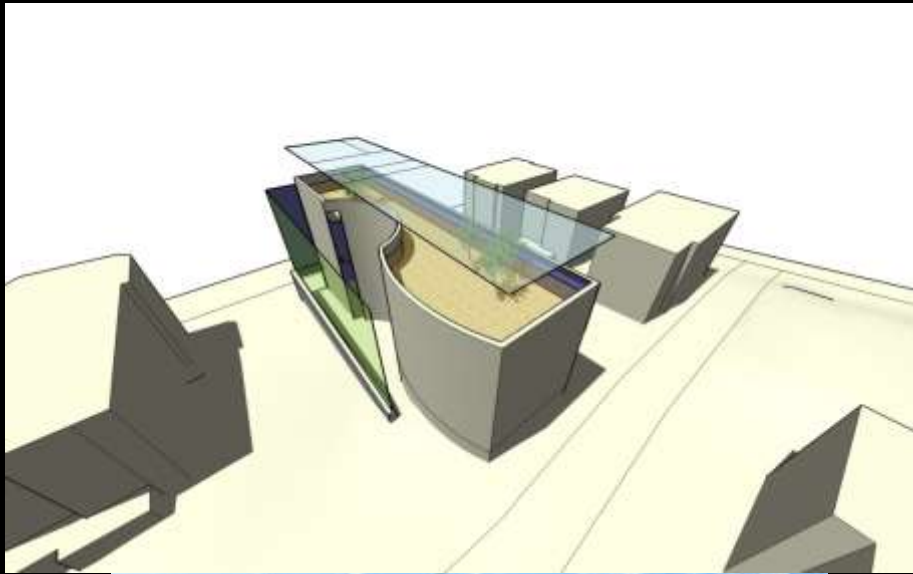
*Collaboration  
Connectivity  
Proliferation  
Commerce*

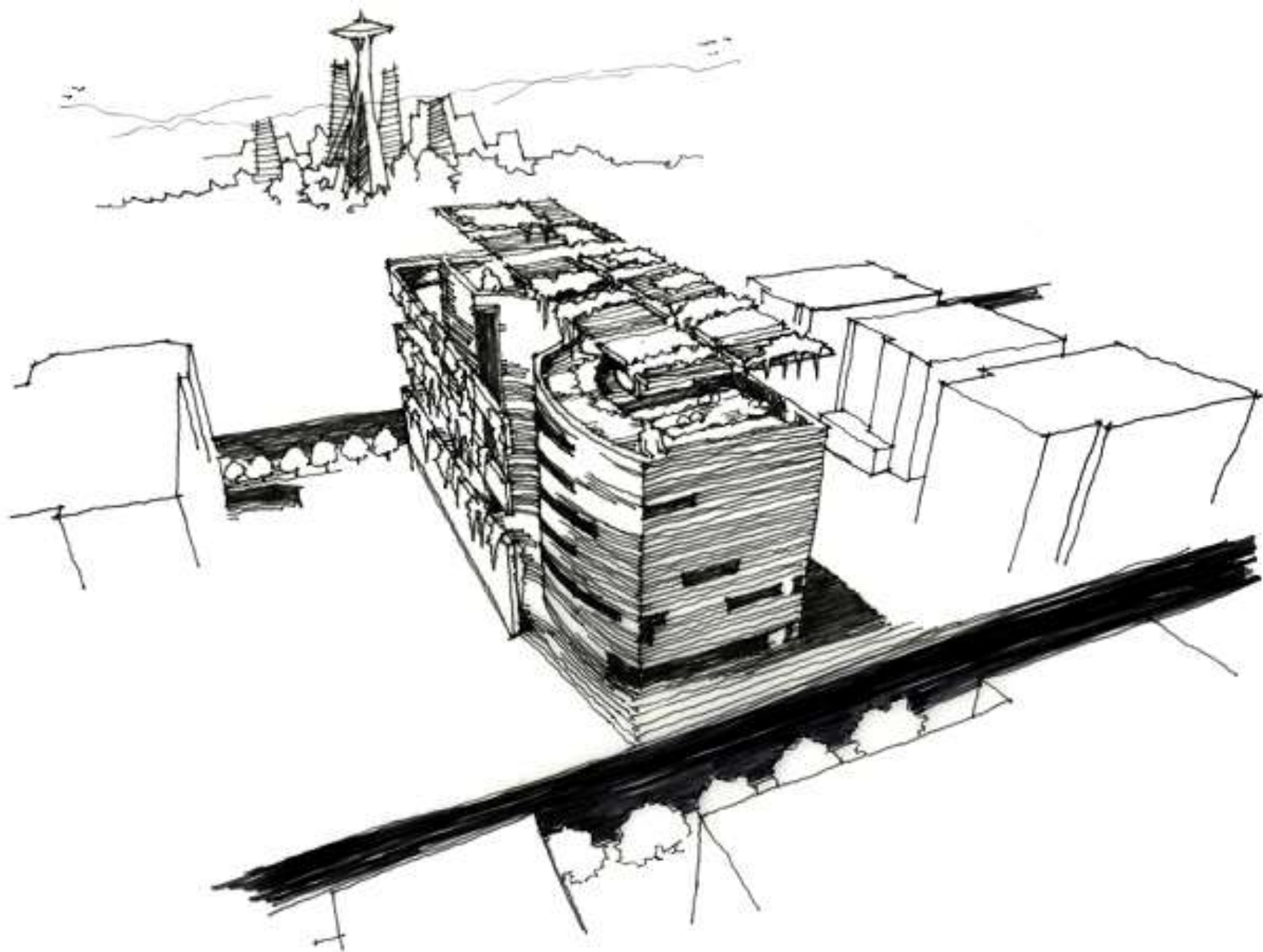




# Energy Scale Jumping







Thank You!

谢谢!