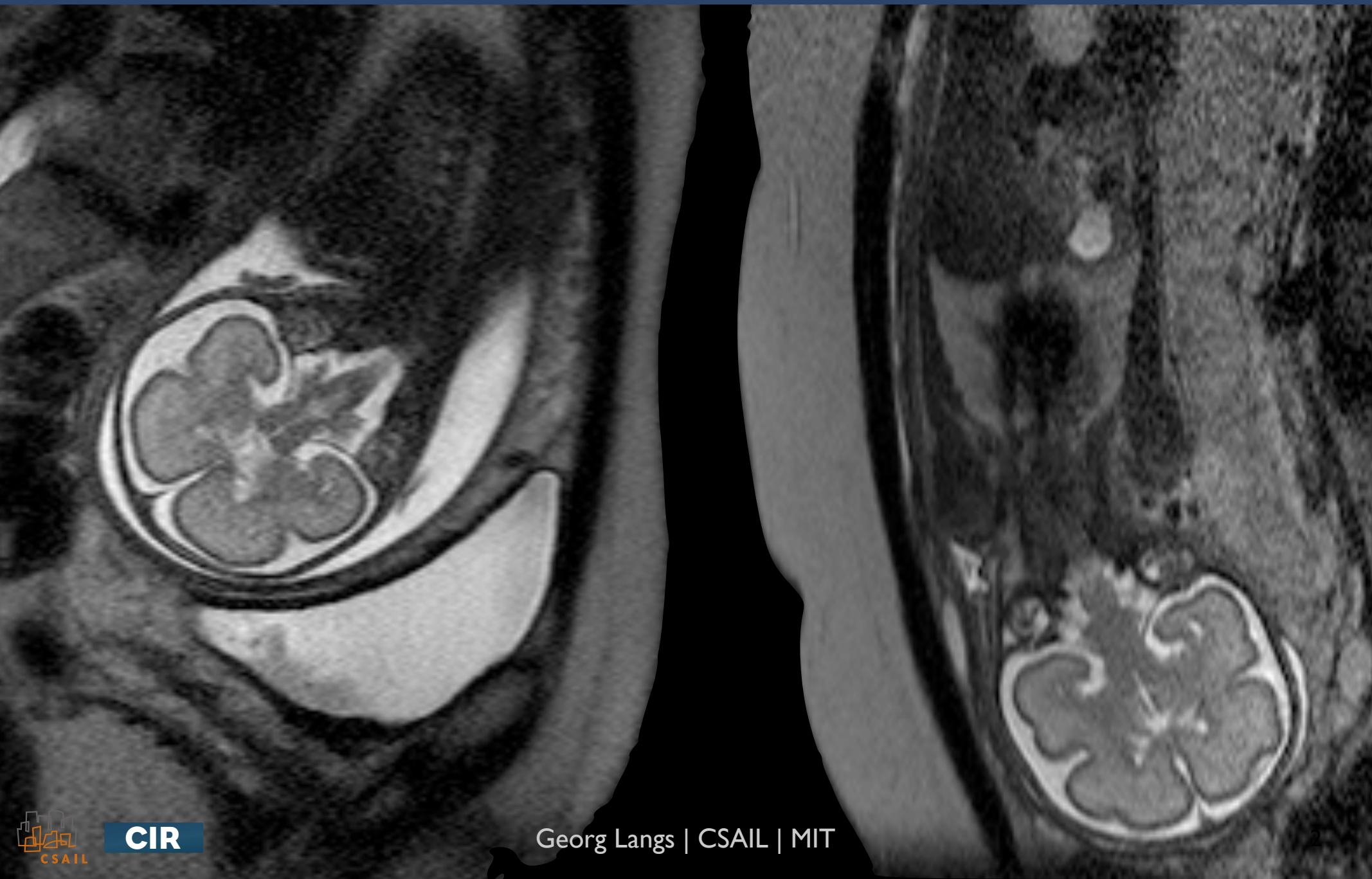


# **Quantitative Morphometry of Fetal Cortical Hemispheres and their Asymmetry**

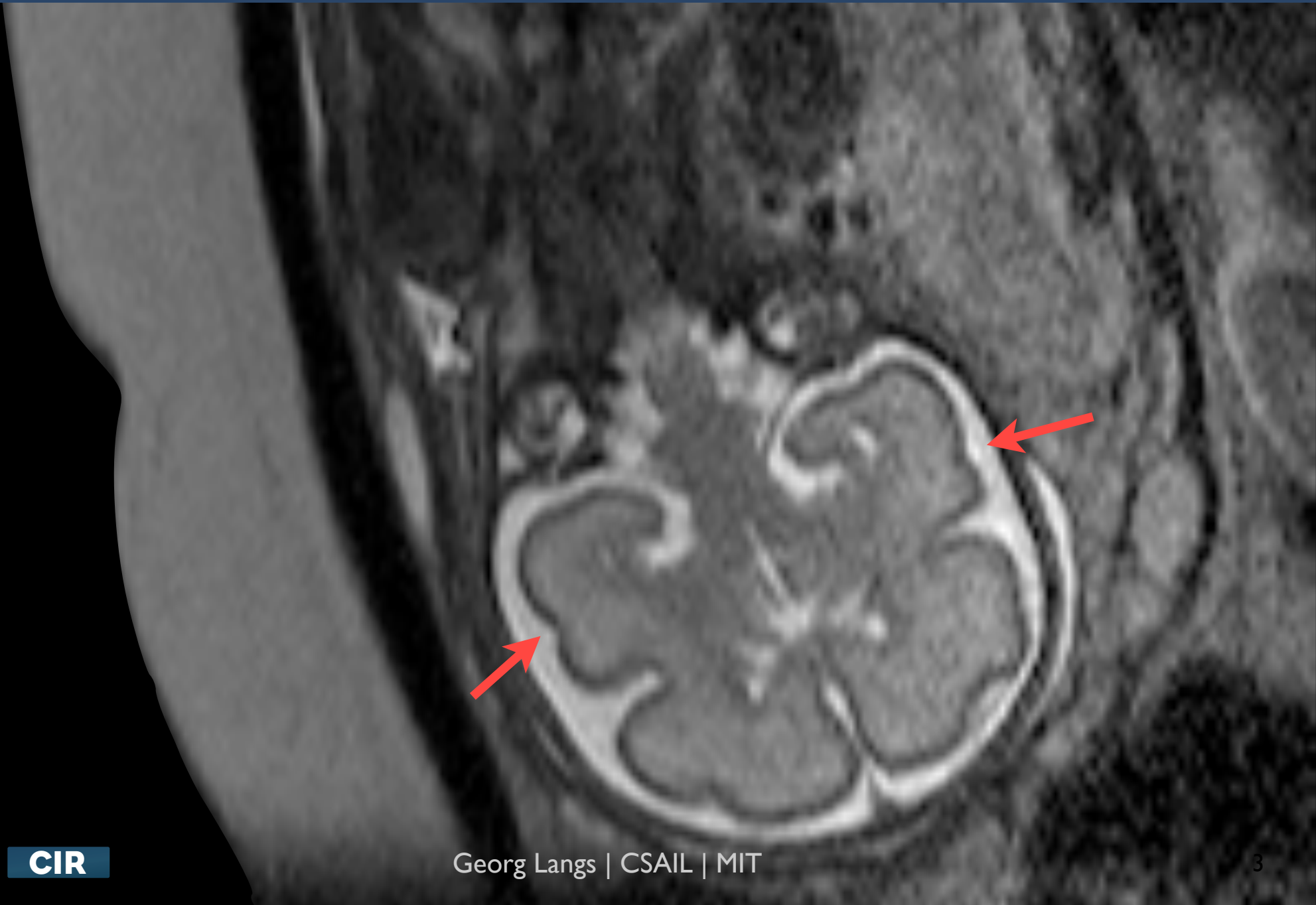
Georg Langs, Gregor Kasprian, Peter C. Brugger, Daniela Prayer



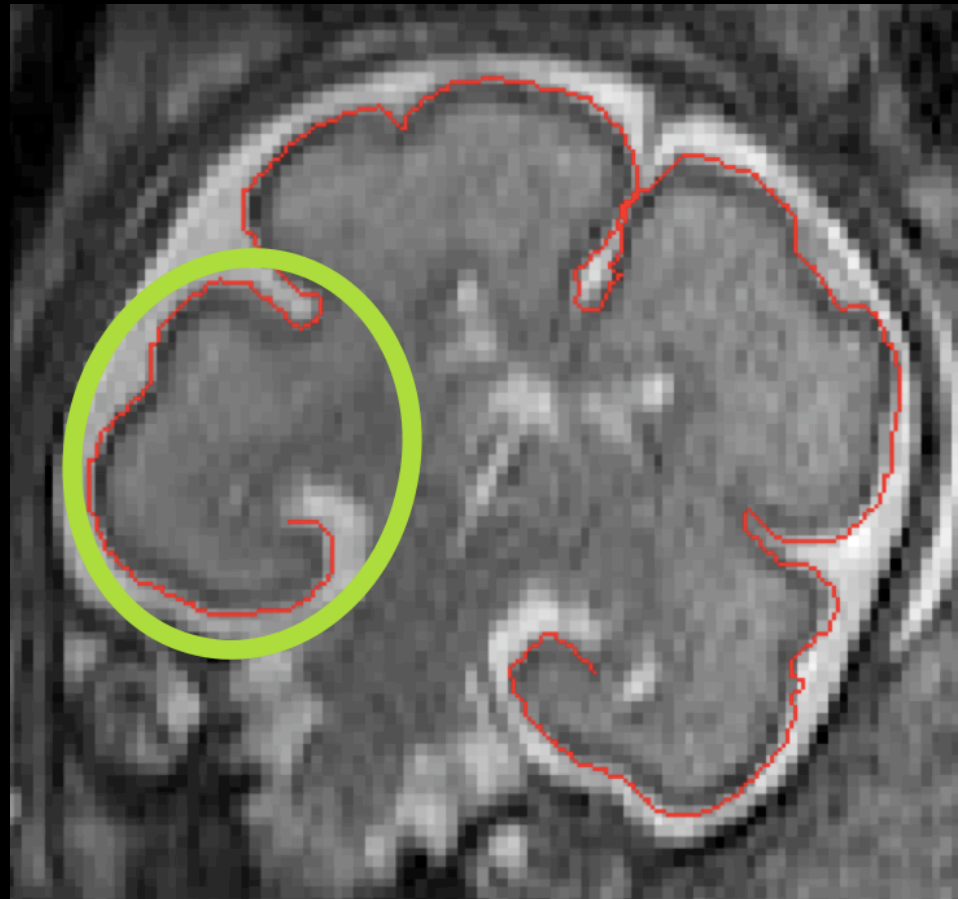
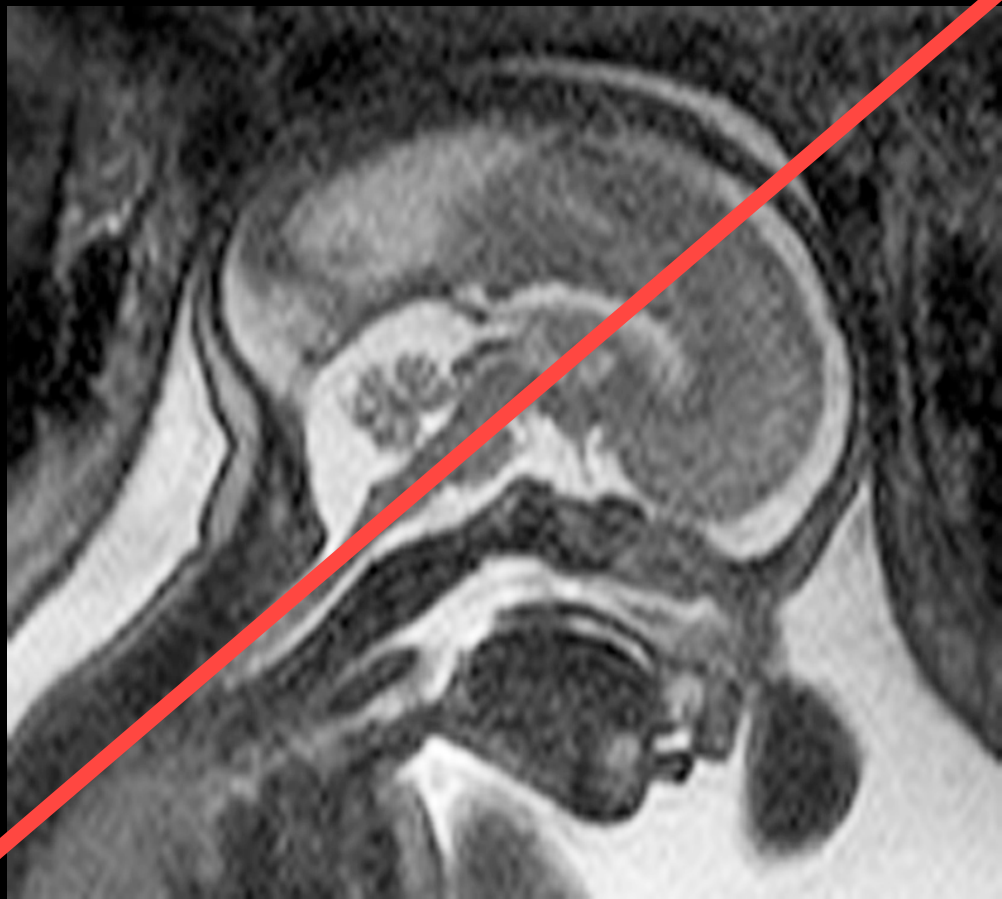
# Fetal MRI



# Asymmetry of the STS



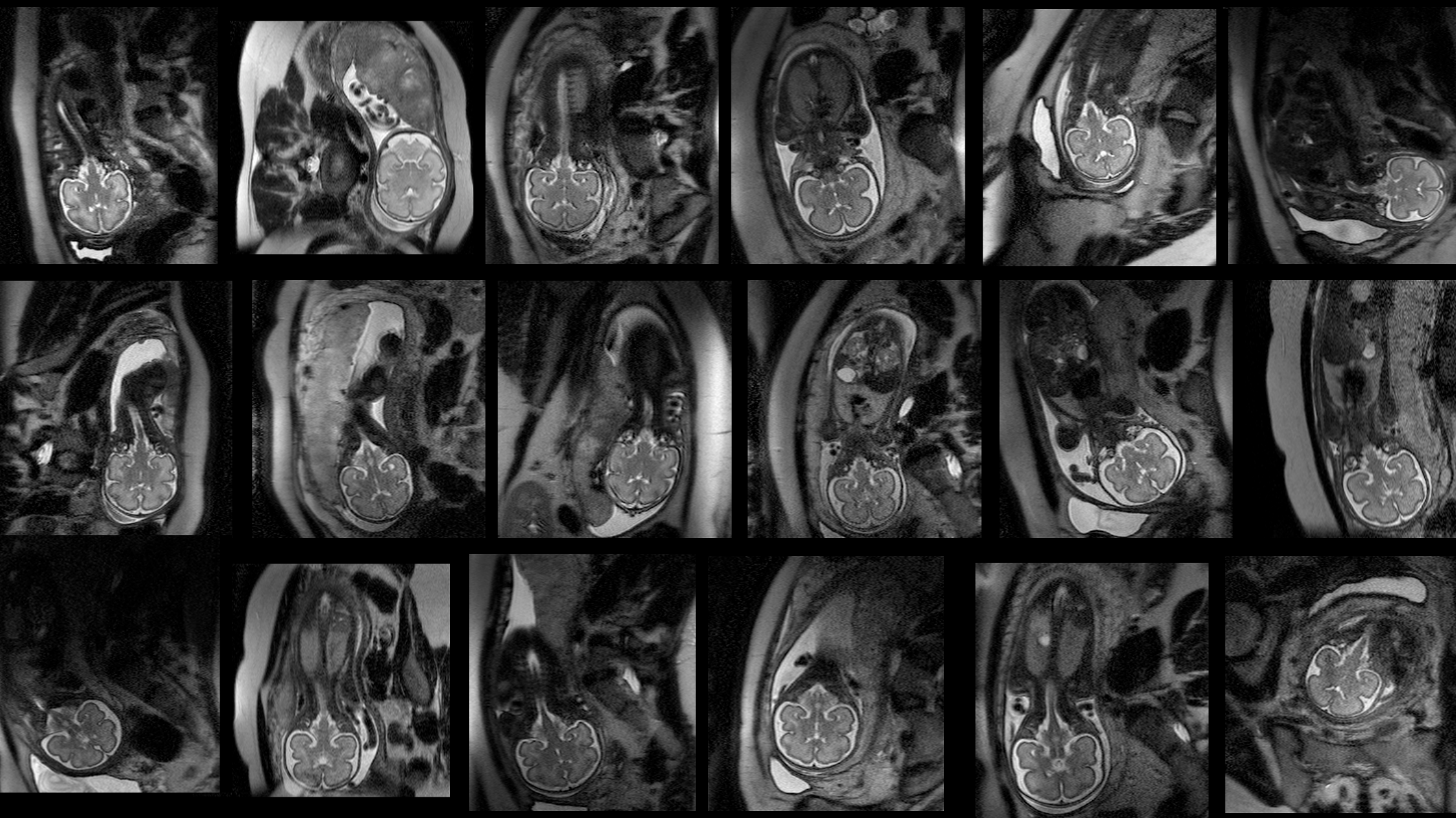
# Asymmetry of the STS



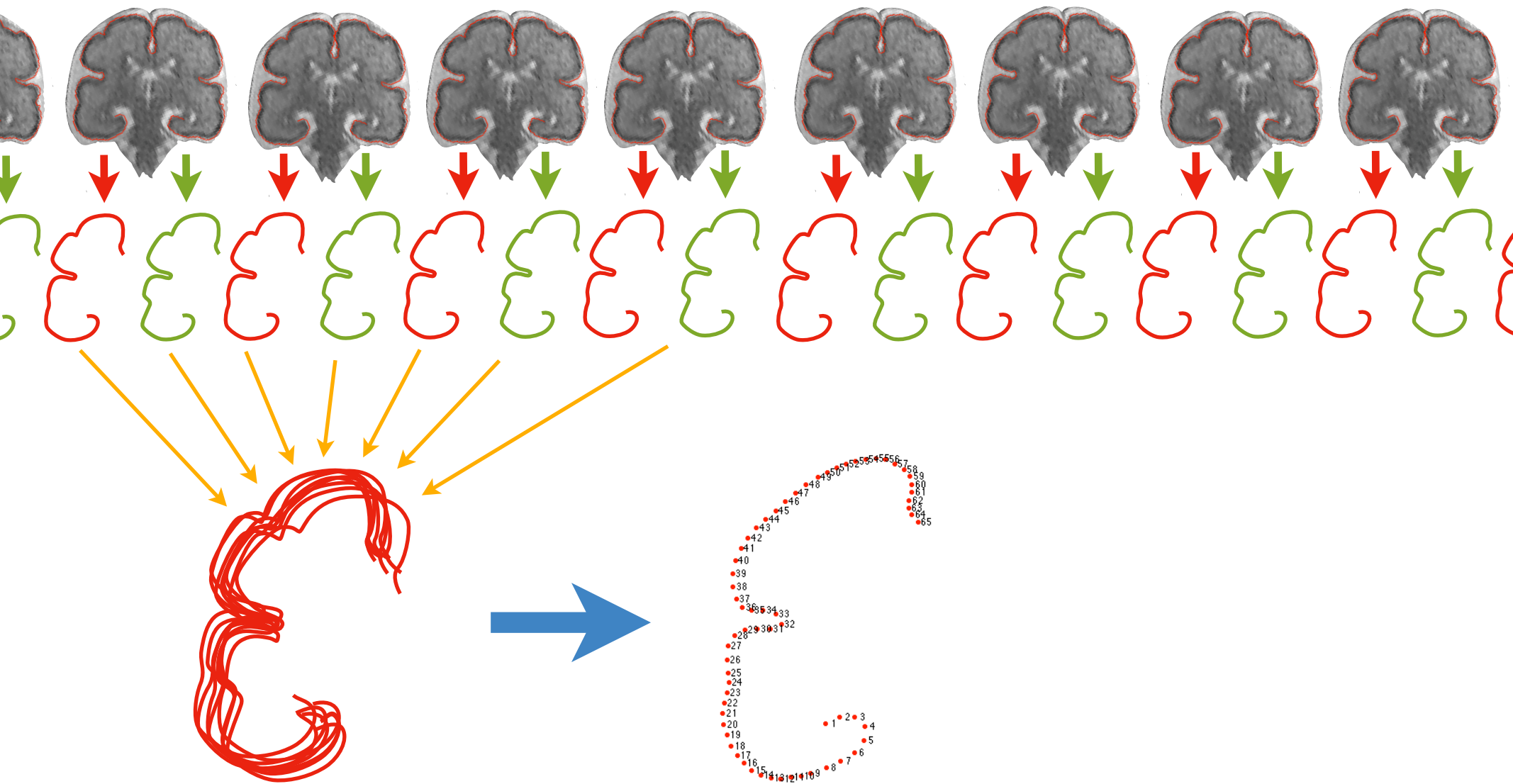
The development of the superior temporal sulcus



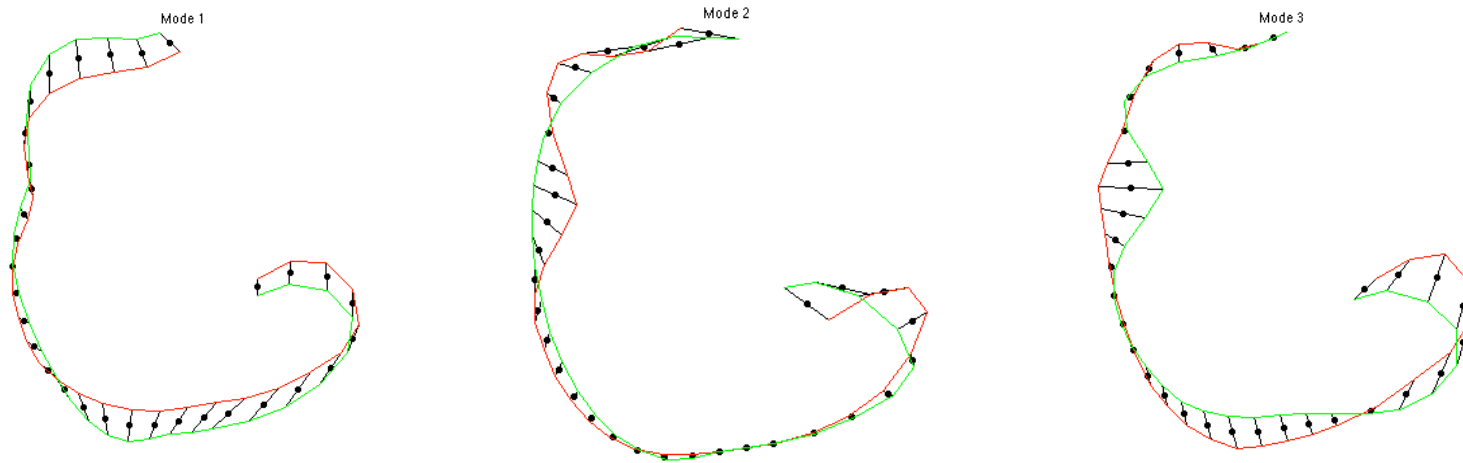
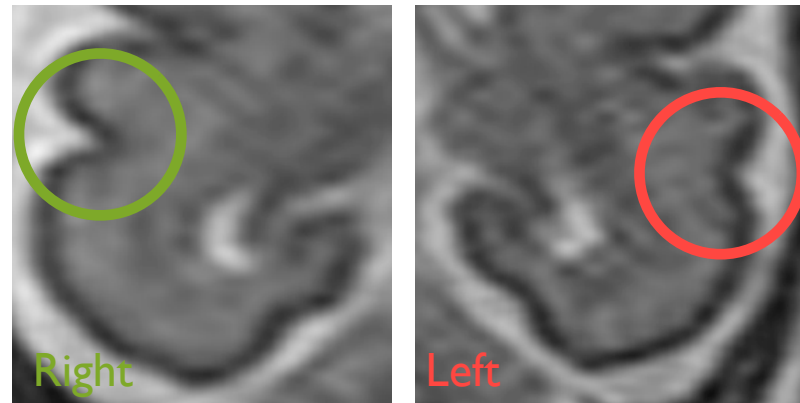
# Study population



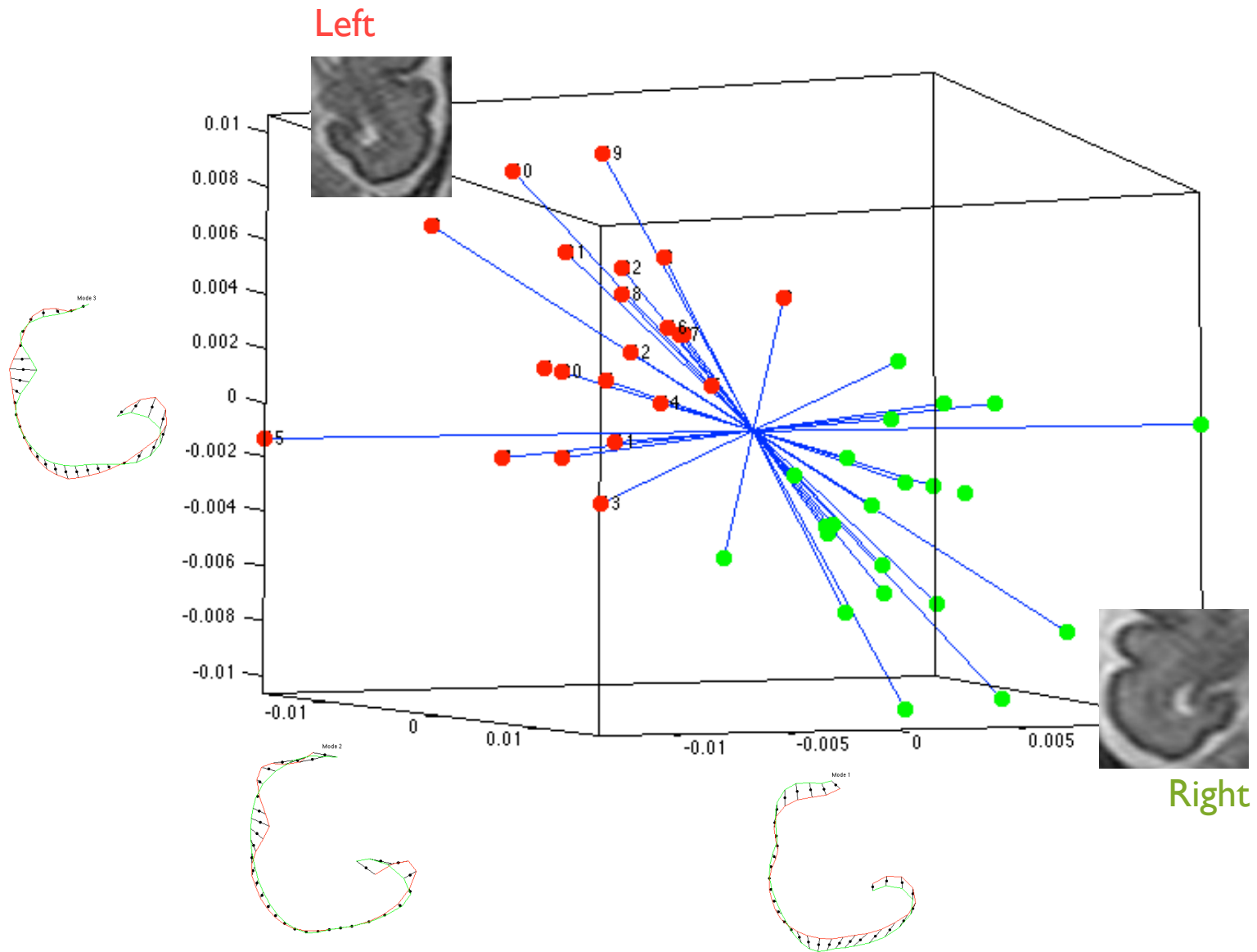
# Group-wise registration



# Shape model and development

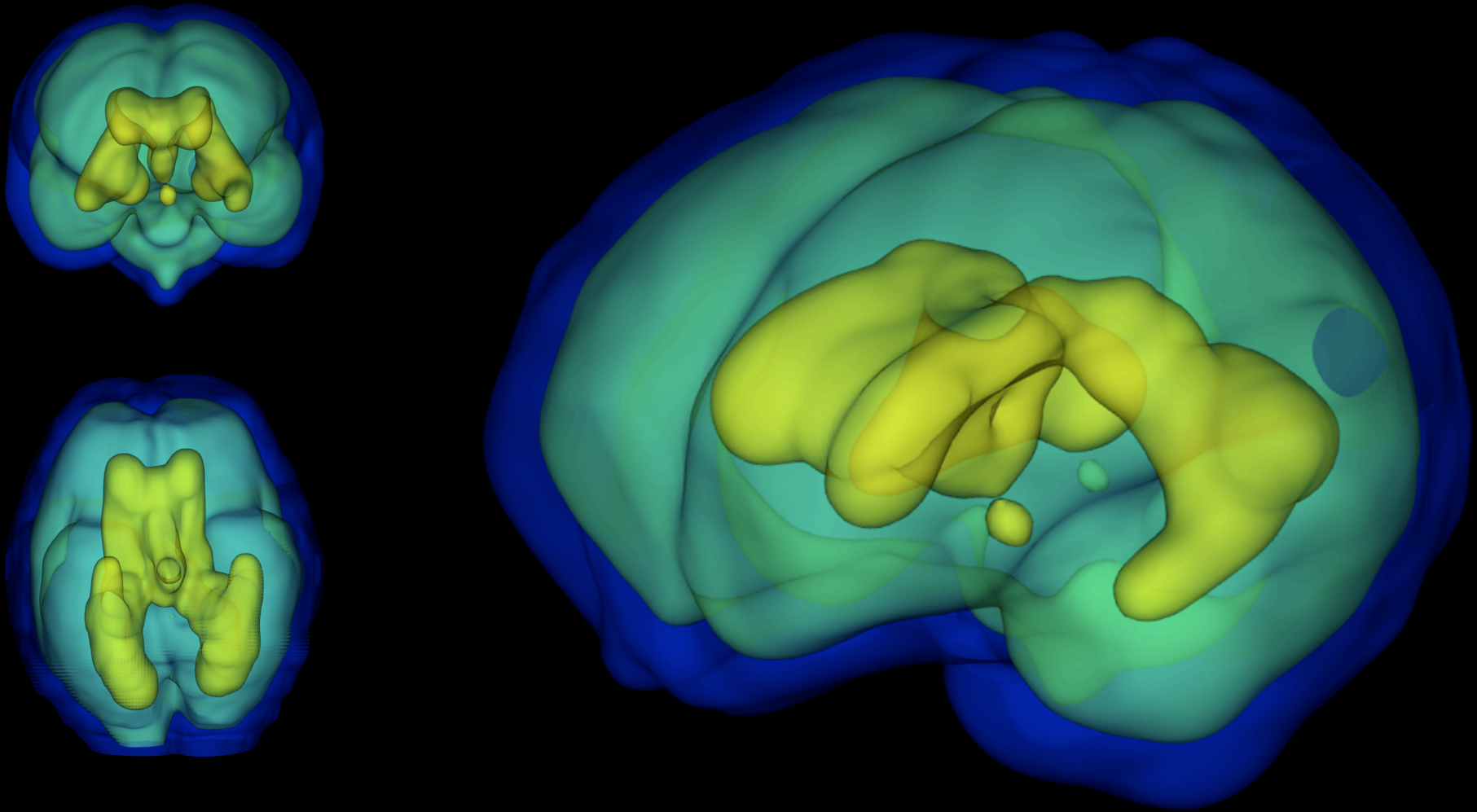


# Relative Coefficients





# Ongoing work: 3D



Thank you!