

Developing and Sustaining Community-University Partnerships: Lessons from a Decade of Experience

Elmer R. Freeman, M.S.W.

Executive Director

Center for Community Health Education

Research and Service, Inc.

University - Community Partnerships??

- Can universities and communities work in collaboration?
- What are the mutual benefits of partnership?
- How should a new organization be structured?
- How will power be shared?

The Great Cultural Divide

University - Community

- University disrespect
- Theoretical perspective
- Education mission
- Intellectual rhetoric
- Analytical frame
- Stagnant culture
- Community distrust
- Practical orientation
- Service mission
- Concrete action
- Political arena
- Dynamic environment

University - Community Expectations!!

- Scholarly publications
- Funded research grants
- Professional supervision of applied grants
- Classroom instruction
- Supervision of student research
- University/collegiate service
- Membership in professional associations
- Manuals and policy papers
- Funded service projects
- Project development and evaluation
- Social action research and strategic planning
- Professional and leadership development
- Civic and community participation

Factors for Partnership Success

- Purpose
- Environment
- Membership
- Process/Structure
- Communication
- Resources

Mission Statement

The mission of CCHERS is to educate health professions students for careers in primary care in community-based settings through “*academic community health centers*”. To integrate service, education and research to influence and change health professions education, improve health care delivery, and promote health systems change.

Institutional Partners

- Boston Medical Center
- Boston Public Health Commission
- Boston University School of Medicine
- Northeastern University Bouve College of Health Sciences

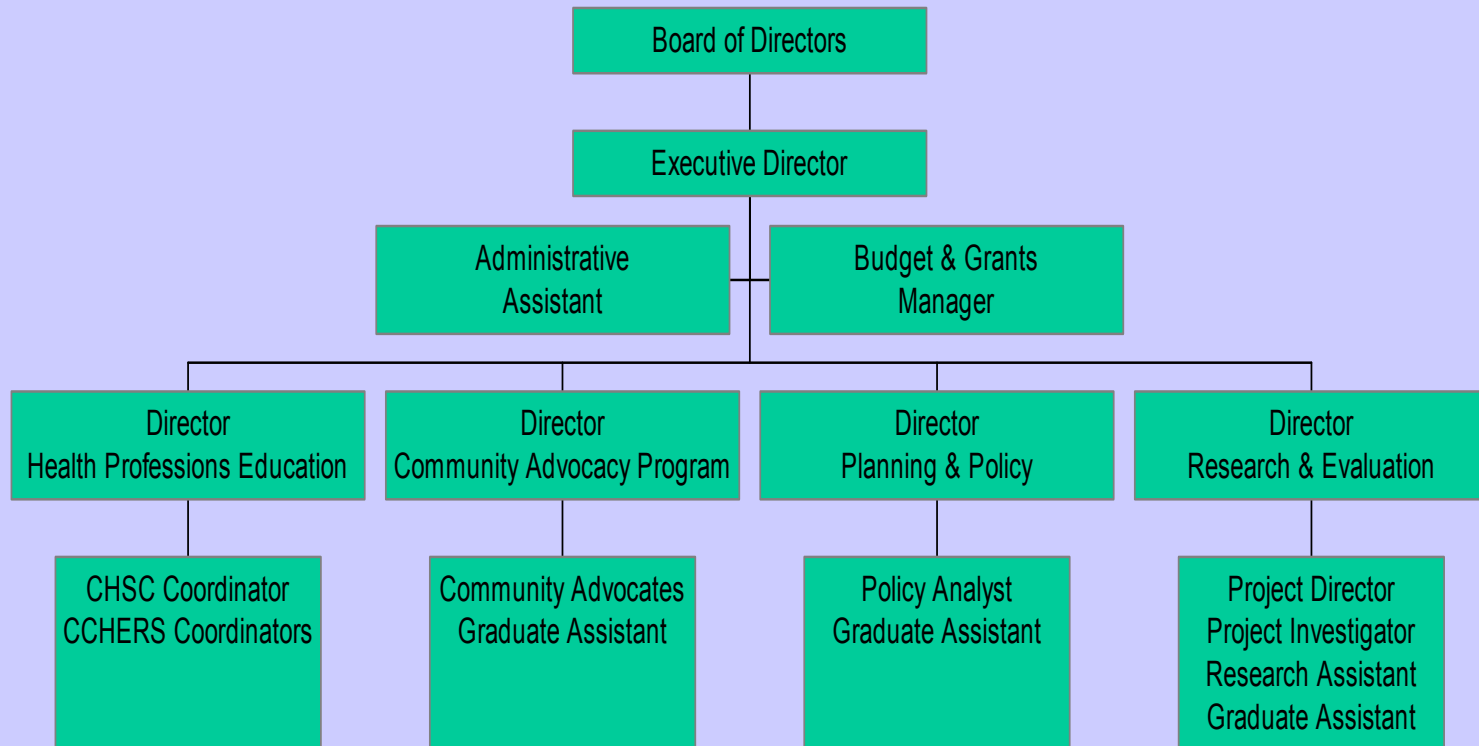
Community Health Center Partners

- Bowdoin Street
- *Codman Square*
- Dimock
- *Dorchester House*
- *East Boston*
- Gieger Gibson
- Harvard Street
- Little House
- Mattapan
- Neponset
- Roslindale
- South Boston
- Uphams Corner
- *Whittier Street*

Governance Representation

Partner	1991	1994	1996	1998
Dept Health & Hospitals	2	2		
Boston Medical Center			2	2
Public Health Commission			2	2
BU School of Medicine	2	2	2	2
NU College of Nursing	2	2	2	2
Community Health Centers	8	20	24	10
Community Representatives				10
At-Large				6
Executive Director	1	1	1	1
Total	15	27	33	35

Organization Chart



Goals

- Promote community based, primary care oriented **education** for a range of health professions students, from high school through graduate and professional school, to improve community health services provided to underserved populations.
- Promote community derived and directed health services and clinical **research**, in partnerships with academic medical center, government, and university researchers, that focuses on health problems that impact diverse urban populations.

Goals (continued)

- Promote coordination of services and interagency collaboration among universities, health services providers, community based organizations, and community residents to create healthier communities.
- Promote public policy and institutional change in health professions education, community health, and health care access to create an equitable health care system for diverse urban populations and communities.

Organizational Development

- 1991 - Funded by W.K. Kellogg Foundation as Community Partnership in Health Professions Education.
- 1992 - Six additional health centers join CCHERS.
- 1994 - Funding from CNS for Community Health Service Corps service learning program.
- 1995 - Health Careers Academy established as pilot school of the Boston Public Schools.
Community Advocacy Program established.

Organizational Development (continued)

1996 - Funded by Kellogg as Community Partnership in Graduate Medical and Nursing Education.

Merger of BCH and BUMC creates Boston Medical Center and the Boston Public Health Commission.

1997 - CCHERS was incorporated as an independent non-profit corporation.

1998 - Health Careers Academy becomes a charter school and relocates to NU Campus.

Merger of Northeastern's Colleges of Nursing and Pharmacy and Allied Health.

Organizational Development (continued)

- 1999 - NU Institutional Grant for CCHERS to integrate other health professions into model of community based education.
- 2000 - CCHERS establishes Boston Community Practice Research Collaborative.
- 2001 - Boston Clinical Pharmacy Practice Network HRSA funded demonstration project.
- 2002 - NIH/NHLBI funded National Center for Reducing Disparities in Asthma.