



# Community Agency Coordination of an Interdisciplinary Health Promotion Service Learning- A Model for Implementation

---

Sue Dotson, MSW, MEd  
Project Director & Coordinator  
Western Maryland Area Health Education Center

Gail Mazzocco, EdD, RN  
University of Maryland School of Nursing

S. Maggie Reitz, PhD, OTR/L, FAOTA  
Towson University; Occupational Therapy and Occupational Science



# What is Interdisciplinary Practice?

---

- An integrated approach in which team providers actively coordinate care and services across disciplines.

Interdisciplinary Collaborative Teams in Primary Care:  
A Model Curriculum

# Interdisciplinary Teamwork

- Involves the exploration of the common elements among team members, and the best ways to use each member's strengths.

Klein, 1990.



# Interdisciplinary Rural Training Team Members

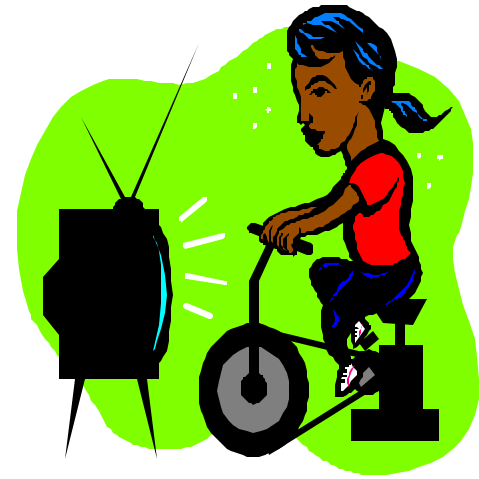
- Providers
- Faculty
- Students
- Community
- Consumers



# Rural Interdisciplinary Health Promotion Project

Western Maryland AHEC coordination

- Links community & academic institutions
- Curriculum development- Modules
  - Rural Interdisciplinary Teams
  - Stress Management
  - Weight Management
  - [www.allconet.org/ahec/rihp](http://www.allconet.org/ahec/rihp)
- Service Learning
- Faculty Development





# Academic Partners

---

- Allegany College
  - Nursing
  - Respiratory Therapy
- Frostburg State U
  - Social Work
- Towson University
  - Occupational Therapy & Occupational Science
- Univ. of Maryland
  - Medical Technology
  - Nursing- BSN, MS
  - Physical Therapy
  - Social Work
- Univ. of Pittsburgh
  - Public Health

# The Rural Community

- Western Maryland





# Community Partners

---

- Western Maryland AHEC
- Allegany, Washington & Garrett Counties
  - AAA Senior Centers
  - Youth summer camps
    - Middle school age
  - Other community centers and sites
    - Churches- Parish Nurse Program

# Why Interdisciplinary Health Promotion?

---

- Recommendations for the Health Professions
- Academic Directives
- *Healthy People 2010*





# 21 Health Professional Competencies for 21st Century

## 1998 Pew Report

---

- Partner with communities in health care decisions
- Embrace a personal ethic of social responsibility and service
- Work in interdisciplinary teams
- Ensure care that balances individual, professional, system, & societal needs



# Competencies

---

- Demonstrate critical thinking, reflection, & problem-solving
- Rigorously practice preventive health care
- Provide culturally sensitive care
- Integrate population-based care and services into practice
- Advocate policy that promotes and protects the health of the public



# Institutional/Professional Directives

---

- Emphasize interdisciplinary collaboration
- Focus on wellness
- Increase use of technology
- Spearhead innovation in interdisciplinary education/practice
- Promote community linkages and service



# Project Objectives

---

- Modules for use in existing courses
- Rural interdisciplinary training
  - Students
  - Faculty
- Community Health Promotion Services
- Module distribution & replication



# Service Learning Training

---

- Orientation
- Team Building
- Community Study
- Health Promotion Activities
- Evaluation



# Training Session Focus

---

- Day One

- Interdisciplinary Team Training

- Team Building Activities
- Discipline perspectives on Health Promotion
- Effective teaming

- Health Promotion Program Training

- Rural Health Issues
- How to Implement Activities & Roles

# Training Session Focus

- Day Two
  - Community Study
  - Screenings
  - Health promotion activities
  - Wrap-up and Evaluation





# Objectives

---

## Increase knowledge & skills

- Various discipline actions to improve health
- Factors contributing to successful teaming
- Barriers to teaming
- Cultural and health values impact
- Health issues in the rural community



# Objectives

---

- Community agency role to improve health
- Relevance to *Healthy People 2010*
- Effective teaming
- Able to replicate activities
- Promote healthy lifestyle activities

# Health Promotion Activities



- Risk Assessment Questionnaire for Heart Disease
- Blood Pressure Reading
- Cholesterol Screening and Report
- Stress Management Activities



# Today's Workshop

---

- Didactic
  - Packet of training materials
- Experiential
  - Team Building Exercise
  - Health Promotion Activities for Elderly
- Brainstorm
  - Potential community partners



# Funded By:

---

- Quentin N. Burdick Program for Rural Interdisciplinary Training

BHPr, HRSA

Grant # 5D36HP10043-08

Contact:

Sue Dotson

[sdotson@allconet.org](mailto:sdotson@allconet.org)



11 Columbia Street  
Cumberland, Maryland 21502