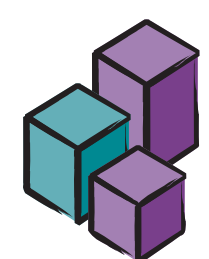


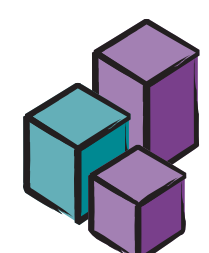
Community-Campus Partnerships for Health

Promoting Health Through Partnerships Between Communities and Higher Educational Institutions



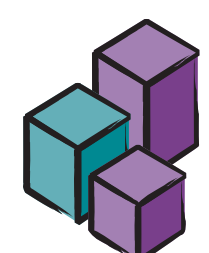
Context

There is a fundamental need for healthier communities around the world. In order to address complex societal problems around health-related issues, collaborative solutions are needed. Partnerships between communities and higher educational institutions represent one such collaborative solution that is gaining recognition and momentum.



Setting

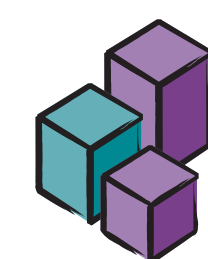
Community-Campus Partnerships for Health (CCPH) is a U.S.-based nonprofit organization that promotes health through partnerships between communities and higher educational institutions. We are a growing network of over 1,000 communities and campuses throughout the United States and increasingly the world that are collaborating to promote health through service-learning, community-based participatory research, broad-based coalitions and other partnership strategies.



Objectives

Founded in 1996, we are working toward a number of shared goals, including:

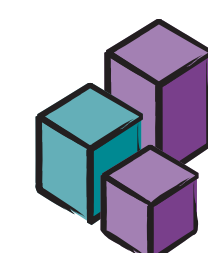
- Building the capacity of communities and higher educational institutions to engage each other as partners
- Incorporating service-learning into the education of all health professionals
- Recognizing and rewarding community-based teaching, research and service
- Developing partnerships that balance power and share resources among partners



Design

We pursue our mission by:

- Disseminating information – through electronic discussion groups, publications, our online Partnership Matters newsletter & website
- Providing training and technical assistance – through conferences, training institutes & customized consultation through the CCPH Consultancy Network
- Highlighting exemplary partnerships – through the annual CCPH award and compilations of models & promising practices
- Conducting research and evaluation – to better understand the factors that contribute to successful community-campus partnerships
- Advancing supportive policies – in funding, accreditation and faculty promotion & tenure, for example
- Developing members – through member special interest groups and professional development activities
- Building coalitions – by convening members with shared interests and developing relationships with like-minded organizations



Main Outcomes

Community-campus partnerships are powerful tools for improving health professional education, civic engagement and the overall health of communities. These partnerships can contribute to a wide range of important outcomes, including:

- Eliminating health disparities
- Increasing health workforce diversity and development
- Increasing access to health care and higher education
- Translating research into practice and policy
- Revitalizing cities and developing rural economies
- Preparing students in a wide range of disciplines and professions for practice

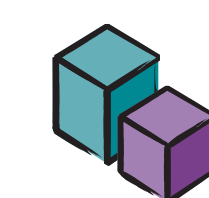


“CCPH provides members with access to a network of individuals who have expertise that others in the early stages of program development can quickly learn from.”

-Patricia Conrad, Research Associate, Dalhousie University, Nova Scotia, Canada

“We joined CCPH because it is a "kindred spirit" organization from the Network's perspective. CCPH offers an important model of the importance of multi-professional learning and service.”

-Arthur Kaufmann, Secretary General, The Network: Towards Unity for Health

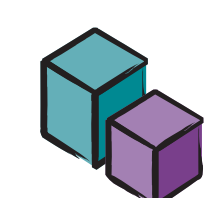


The CCPH Principles of Partnership are central to our work:

- Agree upon values, goals and measurable outcomes
- Develop relationships of mutual trust, respect, genuineness, and commitment
- Build upon strengths and assets, and also address needs
- Balance power and share resources
- Have clear, open and accessible communication
- Agree upon roles, norms and processes
- Ensure feedback to, among and from all stakeholders
- Share the credit for accomplishments
- Take time to develop and evolve

“CCPH has been my continuing "support group" in my attempt to increase my influence on students and my colleagues.”

-Lewis Lefkowitz, Professor Emeritus, Vanderbilt School of Medicine, Nashville, TN USA



International Collaborations

In 2004, CCPH and The Network: Towards Unity for Health jointly sponsored an International Conference on Overcoming Health Disparities in Atlanta, GA USA. The conference drew 430 participants from 39 countries around the globe. A six-month follow-up survey of conference participants revealed a wide range of important outcomes. 68% of participants have contacted a colleague they met through the conference, and 43% obtained more information about a program or resource they learned about at the conference.

“I have started to set up a student exchange program with a colleague I met at the conference who comes from another country. I have visited this colleague and started the process of setting up the exchange.”

Participant, CCPH/Network 2004 Conference

 We invite you to join CCPH! 

Ask us about upcoming events, new publications and opportunities for involvement.



Please visit us at: www.ccph.info