



PARTNERSHIP MATTERS

Member Newsletter of Community-Campus Partnerships for Health

Promoting health through partnerships between communities and higher educational institutions

March 17, 2006
Volume VIII • Issue 6

[Message from Our Executive Director](#)

[News From CCPH](#)

[Membership Matters](#)

[Upcoming Events](#)

[2006 Conference Update](#)

[Announcements](#)

[Employment Opportunities](#)

[Grants Alert!](#)

[Awards, Fellowships & Scholarships](#)

[Calls for Papers & Presentations](#)

[Publications](#)

[Archives](#)

Community-Campus Partnerships for Health

UW Box 354809
Seattle, WA 98195-4809

Tel. (206) 543-8178
Fax. (206) 685-6747

ccphuw@u.washington.edu

www.ccp.h.info

Partnership Matters newsletter is a member benefit of Community-Campus Partnerships for Health

Find out more about [membership benefits](#) and how you can [join CCPH](#)

CAMPUSES CAN APPLY FOR NEW CARNEGIE ELECTIVE CLASSIFICATION FOR COMMUNITY ENGAGEMENT

April 30 deadline for letters of intent

As of February 28th, 2006 higher educational institutions that are engaged with community can apply to the Carnegie Foundation for the Advancement of Teaching for a new elective classification for Community Engagement. Elective classifications rely on voluntary application and documentation by institutions. They provide another way for institutions to describe their identity and commitments with a public and nationally recognized classification.

Definition

Community Engagement describes the collaboration between institutions of higher education and their larger communities (local, regional/state, national, global) for the mutually beneficial exchange of knowledge and resources in a context of partnership and reciprocity.

Application Process

The application process consists of two steps: first, a letter of intent; and second, responses to a comprehensive documentation framework. The first step requires a brief letter from the institution's president or chief executive indicating a commitment to participate in the documentation process in 2006. Letters should be sent to:

Amy Driscoll
Associate Senior Scholar
The Carnegie Foundation for the Advancement of Teaching
51 Vista Lane
Stanford, CA 94305

Once participation has been approved, the second step involves documentation using a framework of questions probing both indicators and categories of community engagement. Those questions will initiate an internal process of documentation for the institution and will involve self-assessment, data gathering, and reporting.

Documentation Process

The first stage of the documentation process requires the institution to describe a set of entry or foundational indicators, Institutional Identity and Culture and Institutional Commitment. Each indicator must be demonstrated by both required and optional documentation examples and descriptions. For example, one requirement of Institutional Identity and Culture for Community Engagement is that the institution indicates that community engagement is a priority in its mission. When institutions meet the documentation requirements of the Foundational Indicators, the first stage is complete. The institution may proceed to the second stage. Institutions that are unable to meet the

[today!](#)

Contact
Newsletter Editor
Annika Robbins
ccphpm@u.washington.edu

©2006 Community-Campus
Partnerships for Health

Partnership Matters
Newsletter

Submission Guidelines

We welcome announcements, comments and questions from you! Please forward them to the PM Editor at ccphpm@u.washington.edu.

Submission Guidelines:

- Please limit announcements and questions to not more than 100 words. As for articles and editorials, not more than 200 words;
- Provide the names of all authors, their current institutional affiliations and/or photos;
- Explain all abbreviations and unusual terms when first used.

requirements of the first stage are not encouraged to proceed to the second stage.

The second stage of the documentation process is the provision of data, examples, and descriptions of focused engagement activities in the categories of Curricular Engagement and Outreach and Partnerships.

Curricular Engagement describes teaching, learning, and scholarship which engage faculty, students, and community in mutually beneficial and respectful collaboration. Their interactions address community identified needs, deepen students civic and academic learning, enhance the well-being of the community, and enrich the scholarship of the institution.

Outreach and Partnerships describe two different but related approaches to community engagement. The first focuses on the application and provision of institutional resources for community use benefiting both campus and community. The latter focuses on collaborative interactions with community and related scholarship for the mutually beneficial exchange, exploration, discovery, and application of knowledge, information, and resources (research, economic development, capacity building, etc.).

Institutions will select the appropriate category with which to describe the campus engagement with community, or will decide to demonstrate both categories, as comprehensive community engagement. The deadline for this second stage of documentation is September 1, 2006. The documentation process is extensive and substantive, focused on significant qualities, activities, and institutional provisions that ensure an institutionalized approach to community engagement.

Review Process

Participation in the documentation process for the community engagement classification is limited in 2006 in order to assure thorough reviews, and to provide opportunity to revise the framework as part of the implementation process. **CCPH executive director Sarena Seifer** is a member of the National Advisory Panel that will be supporting the review process for the first year.

The new elective classification for institutions engaged with community is an exciting move in Carnegie's work to extend and refine the classification of colleges and universities. The classification represents a significant affirmation of the importance of community engagement in the agenda of higher education.

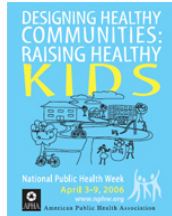
Questions?

Questions about the community engagement classification can be sent to Amy Driscoll at driscoll@carnegiefoundation.org.

This information is also posted online at <http://www.carnegiefoundation.org/classifications/sub.asp?key=785&subkey=1061>

For an overview of the Carnegie classifications, visit <http://www.carnegiefoundation.org/classifications/index.asp>

For more information on Community-Engaged Scholarship, please visit the **CCPH** resources webpage on the topic at <http://depts.washington.edu/ccph/scholarship.html>



DESIGNING HEALTHY COMMUNITIES: RAISING HEALTHY KIDS NATIONAL PUBLIC HEALTH WEEK APRIL 3-9, 2006

In 1995, former President William Jefferson Clinton proclaimed the first full week of April as National Public Health Week (NPHW). Each year, the American Public Health Association (APHA) serves as the organizer of NPHW and develops a national campaign to educate the public, policymakers and practitioners during the week about issues related to the theme. The 2006 observance of NPHW will be from April 3rd - 9th and will be dedicated to "Designing Healthy Communities: Raising Healthy Kids."

During NPHW, APHA, in partnership with many different national, state and local organizations (**including CCPH!**) aims to improve the understanding of the relationship between built environments - homes, schools, parks and community design - and the health and safety of children by promoting solutions that families, communities and policy-makers can use to improve children's health in their communities. Each day will focus on the relationship between the built environment and a core children's health issue, with additional focus on effective solutions based on case studies from model communities:

Monday: Designing Healthy Communities: Raising Healthy Kids
Tuesday: Surrounding Our Kids with Equal Opportunities
Wednesday: Surrounding Our Kids with Physical Activity
Thursday: Surrounding Our Kids with Safety
Friday: Surrounding Our Kids with Clean Air

For details, visit www.nphw.org

MESSAGE FROM OUR EXECUTIVE DIRECTOR



Sarena Seifer

What perspectives do funding agencies bring to the whole arena of community-campus partnerships? When considering proposals for community-campus partnerships, what do they look for as evidence of an authentic partnership, of a promising program? In what ways are funding agencies themselves partners in these partnerships?

A plenary panel taking place on Saturday morning June 3 during the **CCPH conference** in Minneapolis aims to find out! We are excited to announce a diverse line-up of panelists from the public and private sectors:

Joan Cleary, Associate Director of the Blue Cross and Blue Shield of Minnesota Foundation in St. Paul, MN, www.bluecrossmn.com

Sarah Flicker, Chief Research Scientist of the Wellesley Central Health Corporation in Toronto, ON Canada, www.wellesleycentral.com

Juli Kaufmann, Director of the Healthier Wisconsin Partnership Program in Milwaukee, WI, www.mcw.edu/healthierwisconsin

Francisco Sy, Chief of the Office of Community-Based Participatory Research & Outreach in the National Center on Minority Health & Health Disparities at the National Institutes of Health,

<http://ncmhd.nih.gov/>

Terri D. Wright, Program Director at the WK Kellogg Foundation in Battle Creek, MI, www.wkkf.org

Among the questions the panelists will be address are:

When you use or hear the term "authentic community-campus partnership" what does it mean to you?

- What do you believe are the factors and characteristics that make for successful community-campus partnerships?
- What are some of the pitfalls you've observed and what guidance do you have for avoiding or overcoming them?
- What are your funding priorities, especially as they pertain to community-campus partnerships?

The panel is just one way the CCPH conference links members to timely and "mission-critical" resources! Check out the dozens of pre-conference institutes, skill-building workshops, story sessions, thematic posters and poster boards that will be taking place over the period of May 31 - June 3 (not to mention community site visits, which we'll be announcing shortly):

- **Conference overview:** <http://depts.washington.edu/ccph/conf-overview.html>
- **Pre-conference institutes:**
<http://depts.washington.edu/ccph/conf-program.html#PreConfInstitutes>
- **Concurrent sessions:**
<http://depts.washington.edu/ccph/conf-program.html#Agenda>

For the latest updates on the conference, click [here](#). I look forward to seeing many of you in Minneapolis this Spring!

[return to top](#)

NEWS FROM CCPH

CCPH 9th Conference

May 31-June 3, 2006
Minneapolis, Minnesota

**Early-bird Registration
deadline – April 13!**

[Additional Information](#)



Past CCPH Conference Participants

CCPH 9th Summer Service-Learning Institute

July 21-24, 2006
Cascade Mountains of Washington
State

Application deadline – April 7!

**CCPH Members receive a
\$200 discount!**

[Application Information](#)

SAVE THE DATE!

CCPH 10th Anniversary Conference

April 11-14, 2007
Toronto, Ontario, Canada

[Additional Information](#)

MEMBERSHIP MATTERS

Are You Enjoying ALL of the Benefits CCPH Offers?

CCPH keeps you informed! The Resources page on the CCPH website includes links to Funding Opportunities; Awards, Fellowships & Scholarships; and Calls for Papers & Presentations—updated twice a month and easy to access! See

<http://depts.washington.edu/ccph/guide.html>. Membership in CCPH helps support these benefits. Join or renew today to ensure that these resources are always available at your fingertips! To learn more about CCPH member benefits, visit <http://depts.washington.edu/ccph/members.html>.

Not Yet A Member? Join Today!

If you are interested in becoming a member of CCPH or need to renew your membership, [join today!](#)

[return to top](#)

UPCOMING EVENTS

For details on these new listings and all previously listed upcoming events, visit [CCPH's CONFERENCE PAGE](#)

CCPH at Upcoming Events!

MARCH 2006

- ▶ **March 20-21, 2006 • Community Based Participatory Research: A Hands-on Workshop for Health Promotion • Indianapolis, Indiana**

CCPH board member, **Lawrence Green** will give a featured presentation on "Designing Evaluations for Campus-Community Health Promotion Programs: If We Want More Evidence-Based Practice, We Need More Evidence-Based Evidence." Sponsored by the Indiana University School of Library and Information Science at Indianapolis, the workshop will also feature presentations on partnership building, engaging the community in health information outreach, and funding for campus-community partnerships. For more information and to register, go to:

<http://www.nursing.iupui.edu/LifelongLearning/ProgramsAndConferences/CBPR.htm>

APRIL 2006

- ▶ **April 24, 2006 • Symposium on Graduate Study and Civic Engagement at Research Universities • Palo Alto, California**

CCPH member **Tim Stanton** from Stanford University and California Campus Compact Executive Director Elaine Ikeda invite you to this Symposium for graduate-level faculty, administrators, and student leaders at research universities across the State to explore how graduate and professional education can prepare future academics and professionals for effective civic engagement through study, research, and service. The keynote speaker is Lee S. Shulman, President, the Carnegie Foundation for the Advancement of Teaching. For further information and to register, please go to :

http://www.cacampuscompact.org/cacc_programs/pip_research1/index.html

MAY 2006

- ▶ **May 3-4, 2006 • Health Research Alliance Conference •** Washington, DC

CCPH Executive Director, Sarena Seifer and **CCPH member Barbara Israel** will be presenting on community-based participatory research during the conference. The conference theme is "Building Strategic Partnerships to Advance Health Research." For more information, visit <http://www.healthra.org/>

- ▶ **May 31-June 3, 2006 • CCPH's 9th Conference •** Minneapolis, Minnesota USA

To learn more, please see the [2006 Conference Update section](#) of this newsletter!

For complete details, please visit the **CCPH 9th Conference** website at <http://depts.washington.edu/ccph/conf-overview.html>.

JUNE 2006

- ▶ **June 6-9, 2006 • Symposium on Response to Community Crisis: Lessons from Recent Hurricanes •** Jackson, Mississippi

CCPH is a co-sponsor of this symposium being hosted by the Center for Civic Engagement & Social Responsibility at Tougaloo College. The overall goal is to strengthen the ability of academia and community-based organizations to understand and respond to the needs of citizens during times of crisis. For details, visit http://www.hbcufdn.org/sum_inst_program_2006.pdf

JULY 2006

- ▶ **July 21-24, 2006 • CCPH's 9th Summer Service-Learning Institute •** Cascade Mountains, WA

The Service-Learning Institute is designed for both new and experienced service-learning practitioners (faculty, staff and community partners). National experts in service-learning -- health professional faculty who have incorporated service into their courses and community leaders who have developed service-learning partnerships with health professions schools – serve as Institute presenters and mentors.

The application deadline is April 7, 2006.

To learn more about our Service-Learning Institutes and to download an application, please visit <http://depts.washington.edu/ccph/servicelearning.html>.

OCTOBER 2006

- ▶ **October 14-16, 2006 • 6th International Service-Learning Research Conference •** Portland, OR

CCPH senior consultant, Sherril Gelmon is chairing the conference. The theme is "From Passion to Objectivity: International and Cross-Disciplinary Perspectives on Service-Learning Research." Presentation proposals are due March 8, 2006. For details, visit <http://www.upa.pdx.edu/SLResearch06>

NOVEMBER 2006

- ▶ **November 4-8, 2006 • 134th American Public Health Association Annual Meeting** • Boston, MA - **CCPH** will be co-hosting a booth in the exhibit hall with the Kellogg Community Health Scholars Program. For more information, visit <http://www.apha.org/meetings/>

APRIL 2007

- ▶ **April 11-14, 2007 • CCPH's 10th Anniversary Conference** • Toronto ON Canada

Save the Date! The call for conference session and poster proposals will be released this summer. Stay tuned for details at <http://www.ccpb.info>

Registration is now open for our **CCPH's 9th conference**, May 31-June 3, 2006 in Minneapolis, MN USA. For details, visit <http://depts.washington.edu/ccph/conf-overview.html>.

[return to top](#)

New Event Listings

For details on these new listings and all previously listed upcoming events, visit [CCPH's CONFERENCE PAGE](#)

May 12-13, 2006 • New York State Project EXPORT Centers and Montefiore Medical Center's Residency Program in Social Medicine's 35th Anniversary Celebration Conference • New York City, New York • <http://www.aecom.yu.edu/hom/dfsm/alumni>

May 28-31, 2006 • Canadian Public Health Association 97th Annual Conference • Vancouver, British Columbia, Canada • <http://www.cpha.ca>

June 1-3, 2006 • 4th Biennial Conference on Faith Traditions, Spirituality and Service-Learning • Grantham, Pennsylvania • www.messiah.edu/agape/conference

September 29-30, 2006 • WIDER Conference: Advancing Health Equity • Helsinki, Finland • <http://www.wider.unu.edu/conference/conference-2006-2/conference-2006-2-announcement.htm>

October 17-20, 2006 • 5th National Conference on Quality Health Care for Culturally Diverse Populations • Seattle, Washington • <http://www.diversityRx.org/ccconf>

October 19-21, 2006 • American Association of Colleges and Universities Diversity and Learning Conference • Philadelphia, Pennsylvania • <http://www.aacu-edu.org/meetings/diversityandlearning/DL2006>

[return to top](#)

CCPH's 9th Conference

Walking the Talk: Achieving the Promise of Authentic Partnerships
May 31-June 3, 2006 • Minneapolis, MN USA

Announcements

- ▶ **Register Today for a Pre-Conference Institute!** Space is still available. Not able to attend the entire conference? Register for a Pre-Conference Institute! Scheduled for Wednesday, May 31, 2006, these institutes will provide participants with in-depth knowledge and skills in a specific content area. Complete descriptions can be found at <http://depts.washington.edu/ccph/conf-program.html#PreConfInstitutes>. To register, complete the Online Registration Form at <http://depts.washington.edu/ccph/conf-registration.html>.
- ▶ **Academic Credit Option – New This Year!** Through a partnership with the Summer 2006 Public Health Institute (PHI) sponsored by the School of Public Health at the University of Minnesota, participants of CCPH's 9th Conference now have the option of receiving academic credit while attending the conference. Complete information will be posted on the PHI website in early March at: <http://www.sph.umn.edu/publichealthplanet/> or contact PHI at 612-625-2954.



Opening Keynote Speaker: LORETTA JONES

Ms. Jones is the founder & executive director of Healthy African American Families. As a "Community Gatekeeper," Ms. Jones has dedicated her entire life towards the hope and healing of community and society-at-large. For more information, visit <http://depts.washington.edu/ccph/conf-program.html#KeynoteSpeakers>



Closing Keynote Speaker: ANGELA GLOVER BLACKWELL

Ms. Blackwell is founder & chief executive officer of PolicyLink, a national nonprofit organization that is advancing a new generation of policies to achieve economic & social equity from the wisdom, voice, and experience of local constituencies. <http://www.policylink.org/>

Register Today!

Click [here](#) for details!

Early-bird deadline: April 13, 2006!

Join 500 colleagues who – like you – are passionate about the power of partnerships as a strategy for social justice. The program features pre-conference institutes, skill-building workshops, story sessions, community site visits, posters, exhibits and much more!

<http://depts.washington.edu/ccph/conf-registration.html>

Please contact **Annika Robbins, CCPH administrative director**, at AnnikaLR@u.washington.edu or (206) 616-3472 with any questions.

Exhibitor and Co-Sponsor Opportunities Are Available!

Exhibitors and co-sponsors are essential to the success of the conference by directly connecting attendees to valuable programs, products and services. Meet our current co-sponsors at <http://depts.washington.edu/ccph/conf-coexhibit.html>. Find out how your organization can join this esteemed group by visiting <http://depts.washington.edu/ccph/conf-exhibiting.html>.

ANNOUNCEMENTS

New Institute of Medicine Brochure on Health Disparities

The Institute of Medicine of the National Academies in Washington, D.C. has published a new brochure, "Addressing Racial and Ethnic Health Care Disparities: Where Do We Go From Here?" The brochure is available at <http://www.iom.edu/?id=33252>. For further information on the IOM's work in health disparities, please contact Faith Mitchell at fmitchell@nas.edu.

Free Online Course on Aging Available to Students, Faculty and the Public

The course is titled, "Understanding Aging: The Social Worker's Role." This course will help students and professionals be familiar with the basics of aging, as well as common practice experiences relevant to older adults. Based on the Geriatric Social Work Competencies the course may be used as a course requirement or extra credit for social work students in aging. <http://www.naswwebd.org>

César Chávez Campaign Begins March 31

In honor of César E. Chávez' birthday, the César Chávez Campaign begins on March 31 by helping K-12 students take action in their communities utilizing service-learning experiences to connect civic engagement to meaningful learning in the classroom. By following the powerful example César himself set through his work, students will gain historical perspective on who César E. Chávez was, and follow in his footsteps by creating a vision for a better world and implementing a service-learning project that makes a difference in their communities. <http://www.cesarchavezfoundation.org>

Free National & Global Youth Service Day Materials

Materials are available to aid in the planning of service projects for the 18th Annual National & Global Youth Service Day, April 21-23, 2006. Planning Tool Kits, Service-Learning Curriculum Guides, and Classroom Posters are now available in print and on-line.

http://www.ysa.org/nysd/resource/nysd_resources_parent.cfm

[return to top](#)

EMPLOYMENT OPPORTUNITIES

Associate Professor/Professor, Public Health and Director, Rural Health Office – Mel and Enid Zuckerman College of Public Health, University of Arizona – The UA Zuckerman College of Public Health seeks a senior faculty member who will provide dynamic leadership in rural health teaching, research and community, national and international service. For a complete position description, please visit <https://www.uacareertrack.com/applicants/jsp/shared/frameSet/FrameSet.jsp?time=1136930264085>.

Community Based Physician Program Developer – Office of Community Based Education (OCBE), University of California San Francisco School of Medicine – The OCBE mission is to support community based faculty who are teaching medical students in their offices. Experience with community partnerships for the purpose of development and implementation of community based health interventions is desirable. For more information, please contact William Shore at ShoreW@fcm.ucsf.edu or Cynthia Irvine at irvinec@fcm.ucsf.edu

Research Analyst – Center for State Health Policy, Institute for Health, Health Care Policy and Aging at Rutgers University, New Jersey – The successful candidate will also work closely with senior leaders at The Robert Wood Johnson Foundation. They will assist with the synthesis and dissemination activities for these two organizations. For more information, please contact Susan Reinhard at cshpjobs@ifh.rutgers.edu

[return to top](#)

GRANTS ALERT!

Listed below are **NEW** announcements only. To view all previously listed grant alerts, please visit [CCPH's FUNDING OPPORTUNITIES PAGE](#)

NEW Aetna Foundation 2006 Regional Community Health Grants – Deadline: March 31, 2006 – The Foundation awards grants to support disparities in health programs. Initiatives should be focused on the following healthcare issues: depression, childhood health – obesity (including diabetes) and oral health; and end-of-life care.
http://www.aetna.com/foundation/communitygrants/2004_rfp.htm

NEW National Forest Foundation Offers Community Assistance Program – Deadline: April 28, 2006 – The Community Assistance Program was established to promote the creation of locally based forest partnerships that seek to build ecological, social and economic sustainability. The program will support newly formed nonprofit organizations in need of start-up capacity-building and which intend to proactively and inclusively engage the local community in forest management and conservation issues on and around national forests and grasslands.
<http://fconline.fdncenter.org/pnd/10000428/natlforests>

NEW Title IV: Grants for Coordinated HIV Services and Access to Research for Women, Infants, Children and Youth – Deadline: May 3, 2006 – The purpose of the grant is to improve access to primary medical care, research and support services for HIV-infected women, infants, children and youth, and to provide support for their affected family members.
<https://grants.hrsa.gov/webExternal/SFO.asp?ID=6D3E3A7E-FAA5-49B7-8ABB-5E5F90F86396>

NEW LINCS Opportunity – Deadline: May 25, 2006 – LINCS – Local Independents Collaborating with Stations – gives independent producers and public television stations an opportunity to form full production and presentation partnerships. LINCS acts as a catalyst, helping independent producers leverage the support of stations and helping stations access the talent of independent producers, creating programs that speak to their communities. <http://fconline.fdncenter.org/pnd/10000419/itvs>

NEW Grassroots Exchange Fund – Deadline: Open – The Common Counsel Foundation's Grassroots Exchange Fund provides discretionary small grants to build bridges between grassroots organizations throughout the United States. Current criteria for grants include the urgency of the action, strategy session, or conference to the overall work of the applicant organization; the extent to which a small grant would make a significant impact, and the extent to which the applicant meets core Common Counsel criteria – membership-led groups organizing for social, economic or environmental change.
<http://fconline.fdncenter.org/pnd/10000435/commoncounsel>

[return to top](#)

AWARDS, FELLOWSHIPS & SCHOLARSHIPS

Listed below are **NEW** announcements only. To view all previously listed announcements, please visit [CCPH's AWARDS, FELLOWSHIPS, & SCHOLARSHIPS PAGE](#)

NEW Call for Applications: Postdoctoral Fellowship in Abortion and Reproductive Health – Deadline: March 31, 2006 – Social scientists and public health researchers are invited to apply for a Charlotte Ellertson Social Science fellowship. The objectives are to cultivate a cohort of promising new social science researchers who can work from within their disciplines to study abortion and reproductive health, and to produce and publicize research that informs policy and program design.
<http://www.ibisreproductivehealth.org>

NEW Women's Sports Foundation and Gatorade GoGirlGo! Ambassador Team Awards– Deadline: April 7, 2006 – The GoGirlGo! National Campaign is aiming to get one million inactive girls to participate in physical activity and keep another one million currently active girls from dropping out of physical activity. The awards are designed to inspire teams to help combat the alarming physical and psychological health hazards affecting America's youth.
<http://fconline.fdncenter.org/pnd/10000423/womenssports>

NEW YouthActionNet Funds Youth-Led Social Change Projects – Deadline: April 15, 2006 – YouthActionNet will present awards to youth leaders and emerging projects that promote social change and connect youth with local communities.
<http://fconline.fdncenter.org/pnd/10000424/youthactionnet>

NEW Seeking Young Heroes for Barron Prize – Deadline: April 30, 2006 – The Gloria Barron Prize for Young Heroes honors young people ages 8 to 18 who have shown leadership and courage in public service to people and our planet. <http://www.barronprize.org/>

NEW Scholarship for LGBT Health Professions Students– Deadline: June 2, 2006 – The Lesbian, Gay, Bisexual and Transgender Health, Education and Research Trust, Inc. is accepting applications for the 2006 LGBT HEART Scholarship Fund for the Graduate Health Professions.
<http://www.lgbtheart.org>

CALLS FOR PAPERS & PRESENTATIONS

Listed below are **NEW** announcements only. To view all previously listed announcements, please visit [CCPH's CALLS FOR PAPERS & PRESENTATIONS PAGE](#)

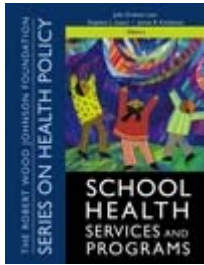
NEW Call for Posters: 35th Anniversary Celebration Conference– Deadline: March 20, 2006 – New York State Project EXPORT Centers and Montefiore Medical Center's Residency Program in Social Medicine's 35th Anniversary Celebration Conference will take place May 12-13, 2006 in New York City. This year's theme is "Overcoming Health Disparities: The Changing Landscape."
<http://www.aecom.yu.edu/hom/dfsm/alumni>

NEW Call for Papers: 4th Biennial Conference *Faith Traditions, Spirituality, and Service-Learning* – Deadline: April 1, 2006 – This year's conference will take place June 1-3, 2006 at Messiah College in Grantham, Pennsylvania. The specific schedule and format will be developed from the proposals received. For more information, visit <http://www.messiah.edu/agape/conference>

NEW Call for Papers: WIDER Conference: Advancing Health Equity – Deadline: May 15, 2006 - This year's conference will take place September 29-30 in Helsinki, Finland. WIDER – World Institute for Development Economics Research – of the United Nations University, undertakes multidisciplinary research and policy analysis on structural changes affecting the living conditions of the world's poorest people; provides a forum for professional interaction and the advocacy of policies leading to robust, equitable and environmentally sustainable growth; and promotes capacity strengthening and training for scholars and government officials in the field of economic and social policy making.
<http://www.wider.unu.edu/conference/conference-2006-2/conference-2006-2-announcement.htm>

PUBLICATIONS

CCPH Members receive discounts on publications by [Jossey-Bass](#) as well as all [CCPH publications](#)

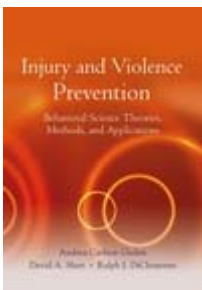


School Health Services and Programs

This collection, developed by one of the foremost authorities in school health, reviews basic concepts in school health, provides a historical perspective and analysis, review the unique role of school nurses, and examines the significance of school health services in vulnerable populations.

CCPH Members receive a 15% discount when ordered through the **CCPH** website!

Ordering information: <http://depts.washington.edu/ccph/josseybass.html>



Injury and Violence Prevention: Behavioral Science Theories, Methods and Applications

This is a cutting-edge volume that provides a comprehensive understanding of injury and violence prevention. This detailed resource draws on the breadth and depth of many scientific disciplines and public health practice experiences. Written by internationally renowned experts in the field, it emphasizes the specific theories, methods, and applications that make behavioral science approaches relevant and central to reducing injury-related harm. The book covers a wide range of topics, including the most frequently used behavior change theories and models and shows how they have been, or could be, applied to injury problems, the most commonly used research methods for understanding and influencing behavior change issues for specific injury topic areas, and a variety of cross-cutting issues important to the field.

CCPH Members receive a 15% discount when ordered through the **CCPH** website!

Ordering information: <http://depts.washington.edu/ccph/josseybass.html>



Environmental Health: From Global to Local

Get an overview of methods and paradigms used in the exciting field of environmental health, ranging from ecology to epidemiology, from toxicology to environmental psychology, from genetics to ethics to religion.

CCPH Members receive a 15% discount when ordered through the **CCPH** website!

Ordering information: <http://depts.washington.edu/ccph/josseybass.html>

[return to top](#)