



PARTNERSHIP MATTERS

Member Newsletter of Community-Campus Partnerships for Health

Promoting health through partnerships between communities and higher educational institutions

September 29, 2006
Volume VIII • Issue 18

[Message From Our Executive Director](#)

[News From CCPH](#)

[Membership Matters](#)

[Members in Action](#)

[Upcoming Events](#)

[Announcements](#)

[Employment Opportunities](#)

[Grants Alert!](#)

[Awards, Fellowships & Scholarships](#)

[Calls for Papers & Presentations](#)

[Publications](#)

[Archives](#)

Community-Campus Partnerships for Health

UW Box 354809
Seattle, WA 98195-4809

Tel. (206) 543-8178
Fax. (206) 685-6747

ccphuw@u.washington.edu

www.ccpH.info

Partnership Matters newsletter is a member benefit of Community-Campus Partnerships for Health

Find out more about [membership benefits](#) and how you can [join CCPH](#)

CALL FOR PROPOSALS FOR 10TH ANNIVERSARY CONFERENCE - APRIL 11-14, 2007 IN TORONTO Mobilizing Partnerships for Social Change

Deadline: *October 6, 2006*

For more information, visit

<http://depts.washington.edu/ccph/conf-cfp.html>

COMMUNITY-ENGAGED COLLEGES OF PHARMACY

The American Association of Colleges of Pharmacy (AACP) continues to play a leadership role in advancing community engagement and community-engaged scholarship in colleges of pharmacy.

AACP has announced the theme of its 2007 interim meeting: "Engaging Communities: Pathways to Learning, Scholarship and Service." The conference takes place February 4-7, 2007 in Arlington, VA. AACP has issued a Call for Panel and Roundtable Discussion Leaders, with abstracts due October 27, 2006 (for details: www.aacp.org or email Melinda D. Colon at mcolon@aacp.org).

Programming for the meeting relates to how pharmacy faculty and students work to identify and address community needs in a host of different ways. From health fairs and immunization outreach, to literacy programs and indigent care clinics, students and faculty are involved in an amazing array of important community-serving activities. A significant amount of scholarly activity accompanies these outreach efforts as well.

Priority themes of the meeting include:

- Community-based participatory research projects that demonstrate the strength or weakness of such an approach;
- Development of community-engaged experiential learning programs that address a particular community need;
- Faculty or student service programs that provide direct care or educational support to community-identified needs; and
- Service-learning approaches to student learning and curriculum development to support this type of learning.

On a related note, AACP has just issued a report, "PILOT PROJECT TO PROFILE EXEMPLARY ADVANCED PRACTICE EXPERIENCE SITES, ACADEMIC-PRACTICE PARTNERSHIP INITIATIVE." AACP, with support from Merck & Company created the multi-year Academic-Practice Partnership Initiative (APPI) in 2004 to identify strategies and develop resources to improve the quality of experiential education sites, expand the capacity for exemplary sites, provide resources for preceptor training and development, and streamline processes within and across colleges and schools of pharmacy. The purpose of this initiative is to improve pharmacy education and practice by: enhancing opportunities for pharmacists to become partners of schools and colleges of pharmacy; enabling colleges and schools of pharmacy in their

today!

**Newsletter Editor
Annika LR
Sgambelluri**

Contact us:
ccphpm@u.washington.edu

©2006 Community-Campus
Partnerships for Health

**Partnership Matters
Newsletter**

Submission Guidelines

We welcome announcements, comments and questions from you! Please forward them to the PM Editor at ccphpm@u.washington.edu.

Submission Guidelines:

- Please limit announcements and questions to not more than 100 words. As for articles and editorials, not more than 200 words;
- Provide the names of all authors, their current institutional affiliations and/or photos;
- Explain all abbreviations and unusual terms when first used.

efforts to assist practitioners and organizations to advance patient care services; and to assist administrators at colleges and schools as well as in pharmacy organizations to enhance experiential education.

The report identifies academic-practice partners with high quality experiential teaching sites for fourth year Doctor of Pharmacy students based on evidence of demonstrating to an optimal degree the APPI quality criteria. The report can be downloaded at www.aacp.org

US NEWS AND WORLD REPORT 2007 RANKING OF COLLEGES AND UNIVERSITIES

Rankings include service-learning

This is the fifth consecutive year that U.S. News is publishing a list of schools with outstanding examples of academic programs that are believed to lead to student success. Service-learning is included among these academic programs. The others are: First-year experiences, Internships/Co-ops; Senior capstone; Undergraduate research/Creative projects; Learning communities; Study abroad; and Writing in the disciplines.

Colleges and universities that were mentioned most often for service-learning are listed below in alphabetical order. For more information, visit these websites:

http://www.usnews.com/usnews/edu/college/rankings/rankacadprogs_brief.php

http://www.usnews.com/usnews/edu/college/rankings/brief/acadprogs05_brief.php

PUBLIC HEALTH LEADERS RECOMMEND VOLUNTARY NATIONAL ACCREDITATION PROGRAM FOR HEALTH DEPARTMENTS

A first-of-its-kind recommended model for a voluntary national public health accreditation program has been released by the Steering Committee of the Exploring Accreditation project. In releasing the model, the committee of state, local and federal public health practice leaders contends that it is both desirable and feasible to develop the program and proposes steps for implementation.

The Exploring Accreditation project, funded by the Robert Wood Johnson Foundation and the Centers for Disease Control and Prevention, began in August 2005 with the goal of answering how a voluntary national accreditation program should be structured and whether such a program is viable. A 25-member Steering Committee of leaders from public health practice representing the local, state and federal levels was established to explore these questions. The Committee developed a proposed accreditation model, vetted that model with the public health field, revised the model to reflect public comment received, and reached consensus that a voluntary national accreditation program is desirable and feasible. The final recommendations and names of Steering Committee members are available at www.exploringaccreditation.org.

A full report on the Exploring Accreditation project will be released later this fall. It will include the final recommendations, a description of a business case for the accreditation program, a research agenda to further support the success of a voluntary national accreditation program, and a full summary of public comment.

For further information, contact Chuck Alexander at 301-652-1558.

MESSAGE FROM OUR EXECUTIVE DIRECTOR

I had the pleasure of speaking at Loma Linda University's Faculty Colloquium last week. This annual event provides an opportunity to recognize and celebrate the contributions that faculty make to LLU, while focusing attention on a strategic university-wide issue. The topic of this year's colloquium was "Community-Engaged Scholarship."

A Seventh Day Adventist institution, LLU has a deep commitment to social justice, with many examples of faculty, staff and student community involvement at home and abroad, including the three highlighted below. The colloquium sought to take this commitment to "the next level" by connecting community service to LLU's teaching and research missions and leading to quality, high impact scholarship. LLU is one of 9 universities participating in the Community-Engaged Scholarship for Health Collaborative facilitated by CCPH. The Collaborative, supported by a grant from the Fund for the Improvement in Postsecondary Education in the US Department of Education, seeks to build capacity for community-engaged scholarship in health professional schools. Community-engaged scholarship involves the linking of community engagement – the application of institutional resources to address and solve challenges facing communities through collaboration with these communities – with scholarship, defined as teaching, discovery, integration, application and engagement; clear goals, adequate preparation, appropriate methods, significant results, effective presentation, and reflective critique that is rigorous and peer-reviewed. (Definitions from: Commission on Community-Engaged Scholarship in the Health Professions. Linking Scholarship and Communities: Report of the Commission on Community-Engaged Scholarship in the Health Professions. Seattle: Community-Campus Partnerships for Health, 2005, available at www.ccpb.info)

The examples below illustrate several ways that LLU is an engaged campus. Each provides tremendous opportunities for scholarship, such as documenting the process of program and partnership development, tracking learner and community outcomes, and analyzing factors that contribute to sustainability.

The Social Action Community Health System (SACHS) began 35 years ago as a part-time volunteer effort by LLU and Medical Center faculty and students who were struck by the large portion of the local community's population that could not access the regular health-care system. In 1995, the U.S. Air Force donated a 42,300 square foot, equipped health clinic facility at the former Norton Air Force Base that enabled SACHS to begin providing full-time, low cost, comprehensive community care. Four million dollars in private philanthropic contributions from individuals, corporations, and foundations enabled the clinic to sustain itself. Today, SACHS is a three-clinic system within the City of San Bernardino that serves 32,000 patient visits annually and provides community service and service-learning opportunities for hundreds of LLU faculty and students. For more information, visit <http://www.llu.edu/llu/sachs/>

The Norton Neighborhoods Initiative focuses on improving health and quality of life in the San Bernardino and Highland neighborhoods. Asset-based community development is at the heart of the initiative, an approach that looks first at assets and gifts of individuals, families, and neighborhoods, not at needs and deficits. Building on existing individual and family and neighborhood networks, skills, abilities, and relationships, the initiative undertakes projects that are culturally, ethnically, and linguistic appropriate. These include tutoring and mentoring after school programs, English as a Second Language classes, nutrition education and community gardening. The initiative provides community service and service-learning opportunities for LLU faculty and students, including pediatric residents. For more information on the Norton Neighborhoods Initiative, visit <http://www.healthycities.com/norton/>

The Center for Health Disparities Research integrates a diverse team of research scientists, physicians, staff, students, and health care providers working with community organizations to undertake community-based and basic health disparities research. Funded by the National Institutes of Health's Project EXPORT, the Center provides educational and training opportunities for high school, undergraduate, and medical students to participate in research programs. For more information, visit <http://www.llu.edu/llu/medicine/chdr/>

To view my presentation at LLU, click here http://depts.washington.edu/ccph/pdf_files/ppt-llu-part1.pdf

To learn more about community-engaged scholarship, visit these pages on the CCPH website:

<http://depts.washington.edu/ccph/scholarship.html>
<http://depts.washington.edu/ccph/healthcollab.html>
<http://depts.washington.edu/ccph/kellogg3.html>

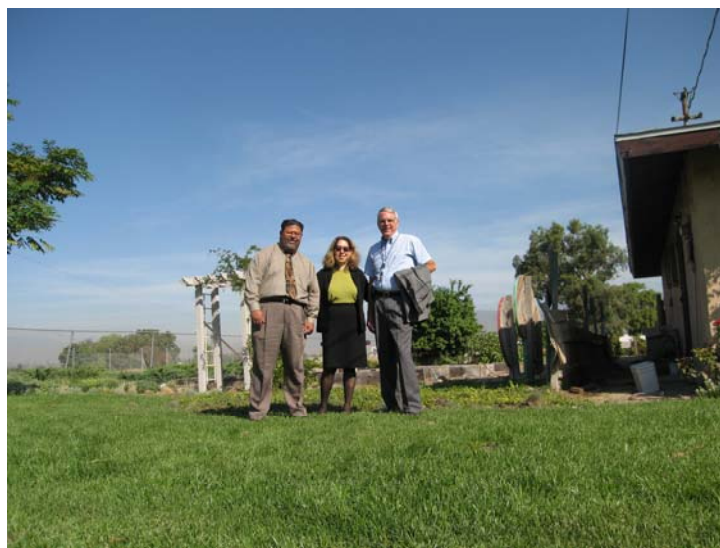
For guidance on how to prepare a strong portfolio for promotion and/or tenure, visit www.communityengagedscholarship.info

To subscribe to the community-engaged scholarship listserv, visit: <https://mailman1.u.washington.edu/mailman/listinfo/comm-engagedscholarship>



Discussing community-engaged scholarship over dinner

From left: Georgia Hodgkin, Nutrition & Dietetics Faculty; David Dyjack, Interim Dean, School of Public Health; Judy Peters, Chair, Interschool Faculty Advisory Council; Sarena D. Seifer, Executive Director, CCPH; and J.C. Belliard, Interim Chair, Global Health Department



Touring the Norton Neighborhoods Initiative

From left: Marino De Leon, Director, Center for Health Disparities Research; Sarena D. Seifer, Executive Director, CCPH; Ron Graybill, Community Benefits Manager, LLU Medical Center

NEWS FROM CCPH

CCPH 10th Anniversary Conference
Mobilizing Partnerships
for Social Change
April 11 – 14, 2007 in Toronto



Call for Proposals!
Deadline: October 6

CCPH Consultancy Network



To arrange a customized workshop or consultation through the **CCPH Consultancy Network**, contact CCPH executive director Sarena Seifer at sarena@u.washington.edu or visit <http://depts.washington.edu/ccph/mentor.html>

For more information, visit
<http://depts.washington.edu/ccph/conf-overview.html>

To view presentations and handouts from past **CCPH Consultancy Network** events, visit
<http://depts.washington.edu/ccph/pastpresentations.html>

MEMBERSHIP MATTERS

Are You Enjoying ALL of the Benefits CCPH Offers?

Not Yet A Member? Join Today!

If you are interested in becoming a member of **CCPH** or need to renew your membership, [join today!](#)

Did you know that **Organizational Members of CCPH** can include up to 4 people on their membership? Organizational membership allows more people affiliated with your organization to directly receive member benefits at a substantial discount over each person joining individually. Organizational members can add even more people for a discounted rate of only \$75 per person. To learn more about CCPH member benefits, visit <http://depts.washington.edu/ccph/members.html>. If you're an Organizational Member and haven't yet named 4 people on your membership, OR you're an E-member or Individual Premium Member and would like to upgrade to an Organizational Member, please email ccphuw@u.washington.edu.

MEMBERS IN ACTION

CCPH MEMBERS APPOINTED TO LEADERSHIP POSITIONS



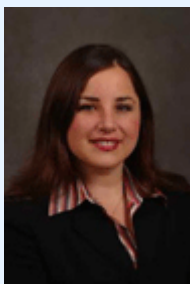
Congratulations to **CCPH member David Dyjack** of Loma Linda University (LLU) who was recently appointed as interim dean of the School of Public Health at LLU. David is a professor of environmental and occupational health and had been serving as associate dean for public health practice.

Learn more about David at

<http://www.llu.edu/llu/faculty/directory/faculty.html?id=ddyjack>

Learn more about the School of Public Health at LLU at

<http://www.llu.edu/llu/sph/>



Congratulations to **CCPH member Lisa Benz Scott** who has accepted the newly created position of Associate Dean for Research at the School of Health Technology and Management (SHTM) at Stony Brook University Health Sciences Center. In her new role, she will be available to faculty/staff throughout the School who are pursuing internally or externally funded research grants. Support will be offered to deal with issues such as navigating University resources and troubleshooting the policies and procedures related to grant submissions, assembling a research team, building interdisciplinary collaborations and facilitating community-academic partnerships, and preparing applications. Learn more about Lisa at

<http://www.hsc.stonybrook.edu/shtm/programs/hcpm/bio-benzscott.html>

Learn more about SHTM at <http://www.hsc.stonybrook.edu/shtm/>

UPCOMING EVENTS

For details on these new listings and all previously listed upcoming events, visit [CCPH's CONFERENCE PAGE](#)

CCPH at Upcoming Events!

OCTOBER 2006

- ▶ **October 6-7, 2006 • CCPH Board Meeting •** Washington, DC

To learn more about the individuals who serve on the **CCPH board of directors**, please visit <http://depts.washington.edu/ccph/boardmembers.html>

- ▶ **October 14-16, 2006 • 6th International Service-Learning Research Conference •** Portland, OR

CCPH senior consultant Sherril Gelmon is chairing the conference, which is being co-sponsored by **CCPH**. The theme is "From Passion to Objectivity: International and Cross-Disciplinary Perspectives on Service-Learning Research." For details, visit <http://www.upa.pdx.edu/SLResearch06>

- ▶ **October 16-17, 2006 • Campus Compact 20th Anniversary Celebration •** Chicago, IL

CCPH Will be exhibiting. For details, visit <http://www.compact.org/20th/>

- ▶ **October 25, 2006 • Center for Border Health Research Conference on Community-Based Participatory Research •** El Paso, TX

CPH executive director Sarena Seifer will be presenting at this conference, designed to share findings from community-based participatory research (CBPR) projects led by three community-based organizations in El Paso, Texas; Alamogordo, New Mexico; and Ciudad Juarez, Chihuahua and take their work "to the next level." For more information, email Jon Law at jlaw@cbhr.org

NOVEMBER 2006

- ▶ **November 4-8, 2006 • 134th American Public Health Association Annual Meeting •** Boston, Massachusetts

Registration is now open for the CBPR Continuing Education Institutes at APHA. Both are offered in partnership with the APHA Community-Based Public Health Caucus. You don't need to register for the whole APHA conference to attend a continuing education institute. Details available at <http://www.apha.org/meetings/index.htm>.

Developing and Sustaining Partnerships for Community-Based Participatory Research will be held November 4 from 1:30-5:00 pm and is based on the training curriculum developed by the Examining Community-Institutional Partnerships for Prevention Research Group. For more info about the group, visit http://depts.washington.edu/ccph/pdf_files/Project%20Fact%20Sheet%20Apr%202006.pdf.

Community-Based Participatory Research: Working With Communities to Analyze Data and Get to Outcomes will be held November 5 from 8:00-11:30 am.

CCPH will also be co-hosting booth # 1220 in the exhibit hall with the Kellogg Health Scholars Program.

APRIL 2007

- ▶ **April 11-14, 2007 • CCPH's 10th Anniversary Conference - Mobilizing Partnerships for Social Change** • Toronto, Ontario, Canada

The Call for Proposals (CFP) is now available! - Deadline: October 6, 2006

CCPH invites you to share your knowledge, experience and lessons learned with hundreds of colleagues who - like you - are passionate about the power of partnerships to transform communities and academe.

Proposals are sought that address one or more of the conference sub-themes:

- Understanding and Addressing the Social Determinants of Health
- From Grassroots Movements to Policy Change
- Communities as Centers of Learning, Discovery and Engagement
- Developing the Science of Community-Based or Practice-Based Evidence

The CFP is available at <http://depts.washington.edu/ccph/conf-cfp.html>

Never been to a CCPH conference? Check out presentations from **CCPH's 9th conference**, held May 31-June 3, 2006 in Minneapolis, MN USA at <http://depts.washington.edu/ccph/pastpresentations.html>

New Event Listings

For details on these new listings and all previously listed upcoming events, visit [CCPH's CONFERENCE PAGE](#)

September 29 - 30, 2006 • 3rd Annual Asian American Health Conference • New York, NY • www.med.nyu.edu/csahh

October 23-27, 2006 • JASP Annual Conference • Montreal, Canada • <http://www.inspq.qc.ca/jasp/>

November 2-3, 2006 • Expanding the Circle of Service-Learning Leadership Conference • Waltham, Massachusetts • www.jhsph.edu/source

November 5-7, 2006 • Campus Kitchen Project Leadership Conference • Washington, DC • <http://ga1.org/ct/Q1ML-bM1nu-i/>

November 5-7, 2006 • Canadian Conference on the Public's Health and the Law • Toronto, Canada • <http://www.phlaw.cpha.ca>

November 16, 2006 – 1pm EST • Webcast: Mobilizing Against the HIV/AIDS Crisis Among African Americans • http://www.cdc.gov/mmwr/preview/mmwrhtml/mm5528a6.htm?s_cid=mm5528a6_e

November 29, 2006 • Moving Toward Real Solutions: Advances to Address Low Health Literacy • Washington, DC • <http://foundation.acponline.org/healthcom/locationmap.htm>

December 6-8, 2006 • National Environmental Public Health Conference • Atlanta, Georgia • <http://www.cdc.gov/nceh/conference/index.htm>

December 6-8, 2006 • Making Methods and Practice Matter for Women, Children and Families Conference • Atlanta, Georgia • <http://www.cdc.gov/reproductivehealth/MCHEpi/2006/AboutConference.htm>

December 10-13, 2006 • Building a Health Care System That Works. Here. There. Everywhere • Orlando, FL • www.ihl.org

ANNOUNCEMENTS

Host Medical/Dental School Needed for 2007 Primary Care Leadership Training Program - December 8 Deadline

The American Medical Student Association/Foundation (AMSA) is seeking a medical and/or dental school to host the 2007 Primary Care Leadership Training Program (LTP). This weeklong summer program is designed to enhance the leadership skills of outstanding medical and dental students and educate them about the wide range of career opportunities in primary care. Forty medical and dental students from across the country, nominated and sponsored by their deans, will be selected by AMSA to participate in the program. The theme for the 2007 LTP is Primary Care Across the Lifespan: Meeting the Challenge of Health Disparities. The main goal of this year's LTP is to educate students on health disparities as they relate to the care of minority populations from the very young to the very old. Applications are available at <http://www.amsa.org/addm/hostschoollapp2007.doc> If you have any questions or need more information, please contact Angelia Bowman at (703) 620-6600 ext 216 or abowman@amsa.org

New Report Released on National Service Response to Hurricane Katrina

More than 35,000 national service participants contributed more than 1.6 million hours during the first year of hurricane relief and recovery efforts along the Gulf Coast, according to a recent report by the Corporation for National and Community Service. The report, "National Service Responds: The Power of Help and Hope After Katrina," chronicles the initial response and ongoing recovery activities of national service volunteers. While documenting the powerful contributions made through national service, it also points out the challenges of disaster volunteering and the long road to recovery ahead. The report is available at the Corporation's website at <http://ga1.org/ct/SpML-bM1nuJT/>

Community Benefit Site Features Interactive Map

The Association for Community Health Improvement launched an updated Community Benefit Resources web page featuring an interactive map of statutory and voluntary community benefit programs by state. The public web page also includes links to: planning and reporting tools, financial and IRS guidance, sample hospital community benefit reports and a selection of articles.

<http://www.communityhlth.org/communityhlth/resources/communitybenefit.html>

What Does America Think about Childhood Obesity?

Understanding the perceptions of the American public is important as RWJF works to improve access to healthy foods and opportunities for safe physical activity by changing policies, environments and social norms. This document highlights results from a survey conducted in October 2005 by the Harvard School of Public Health and RWJF. The team polled a nationally representative sample of 1,108 adults to determine current attitudes about childhood obesity and to gauge support for various childhood obesity prevention initiatives. http://www.rwjf.org/files/research/Obesity_ResearchHighlight_3_0604.pdf

Clinician's Guide Now Available in Spanish

The National Institute on Alcohol Abuse and Alcoholism's 2005 clinician's guide, Helping Patients Who Drink Too Much, has been translated into Spanish. The new resource is titled, Ayudando a Pacientes Que Beben en Exceso—Guía Para Profesionales de la Salud. The Guide provides a research-based approach to alcohol screening and brief intervention for both primary care and mental health clinicians. The Guide offers streamlined, step-by-step guidance for conducting brief interventions and managing patient care. Spanish version:

http://pubs.niaaa.nih.gov/publications/Practitioner/CliniciansGuide2005/Spanish/clinicians_guide_sp.htm

English version:

http://pubs.niaaa.nih.gov/publications/Practitioner/CliniciansGuide2005/clinicians_guide.htm

EMPLOYMENT OPPORTUNITIES

The W.K. Kellogg Foundation, one of the largest and most prominent foundations in the country, seeks a seasoned and dynamic leader to serve as its next Vice President for Health Programs. This is an extraordinary opportunity to join the Kellogg Foundation's new leadership team and to play a critical role in guiding the Foundation's health programs toward a more interdisciplinary strategy for grantmaking. The Vice President for Health will lead a dynamic staff dedicated to helping improve the health of people in communities through increased access to integrated comprehensive health care systems organized around public health, prevention, and primary health care. The Vice President will strategically engage the teams' creativity, skill, and vision to guide the evolution of Kellogg's Health programs within the greater foundation community.

The ideal candidate will have an exceptional track record of leadership in service to community health. S/he should understand the realities of systemic change at the community level as a result of leading successful change toward improvement of access to and the quality of health care, along with a well-informed vision for the part that strategic philanthropy can play in uniting key stakeholders in driving wide-scale systemic change in community health. S/he should have proven management and communication effectiveness, having led diverse and intellectually exceptional groups of individuals toward the development of a team that values diverse perspectives while working together toward a common goal.

The W.K. Kellogg Foundation has retained the executive search firm Isaacson, Miller to assist in this search. Inquiries, nominations, and applications (cover letter, resume, and list of 3-5 references) should be directed in confidence to:

David A. Haley or Katherine E. Jacobs
Isaacson, Miller
1875 Connecticut Ave., NW Suite 710
Washington, DC 20009
Phone: 202-216-2272
E-mail: 3239@imsearch.com

The W.K. Kellogg Foundation is an Equal Opportunity Employer.
Learn more about the Foundation at www.wkkf.org

GRANTS ALERT!

Listed below are **NEW** announcements only. To view all previously listed grant alerts, please visit [CCPH's FUNDING OPPORTUNITIES PAGE](#)

NEW National Multiple Sclerosis Society Funding for Healthcare Delivery and Policy Research – Deadline: Sept. 29, 2006 (LOI) – The National Multiple Sclerosis Society invites Letters of Intent for the following research funding opportunities: Financial modeling of multiple sclerosis medical care: \$300,000-\$400,000; and Develop and evaluate comprehensive quality indicators for MS medical care: \$300,000-\$450,000. <http://www.nationalmssociety.org/research-RFP.asp>

NEW Influence of Religiosity and Spirituality on Health Risk Behaviors in Children and Adolescents – Deadline: Oct. 1, 2006 and Nov. 1, 2006 – Research studies are being solicited that are qualitative, quantitative, and combined methods; that examine the mechanisms, mediators, and moderators by which religious and spiritual beliefs develop and are transmitted across generations; and whether and how these beliefs influence early sexual behaviors and alcohol or other drug use that may facilitate the transmission of HIV in children and adolescents.
<http://grants.nih.gov/grants/guide/pa-files/PA-06-401.html>
<http://grants.nih.gov/grants/guide/pa-files/PA-06-402.html>
<http://grants.nih.gov/grants/guide/pa-files/PA-06-403.html>

NEW State Farm Good Neighbors Service-Learning Grants Available – Deadline: Oct. 16, 2006 – Youth Service America and the State Farm Companies Foundation are offering the State Farm Good Neighbor Service-Learning Grant for youth across the United States. These grants of up to \$1,000 support youth (ages 5-25), teachers, or school-based service-learning coordinators in implementing service-learning projects for National and Global Youth Service Day, April 20-22, 2007.
<http://ga1.org/ct/V7ML-bM1nuJ6/>

NEW American Health Assistance Foundation National Heart Foundation Research Grants – Deadline: Nov. 1, 2006 – The National Heart Foundation, a program of the American Health Assistance Foundation, sponsors research on the causes and potential treatments of stroke or cardiovascular disease. NHF currently funds five starter grants, which assist young investigators starting independent research programs. Applications will be accepted for amounts up to \$30,000 per year for up to two years of funding with possible renewal on a competitive peer-reviewed basis.
<http://fconline.fdncenter.org/pnd/10004221/ahaf>

NEW Human Development Grants – Deadline: Nov. 1, 2006 (Eligibility Quiz) – The U.S. Conference of Catholic Bishops has streamlined the pre-application process for its Catholic Campaign for Human Development grants. CCHD has two grant programs: Community Organizing Grants of \$10,000 to \$50,000 each, and Economic Development Grants of \$25,000 or \$50,000 each.
<http://fconline.foundationcenter.org/pnd/10003728/usccb>

NEW Robert Wood Johnson Foundation Substance Abuse Policy Research Program – Deadline: Nov. 14, 2006 – Projects are expected to increase understanding of public and private policy interventions to prevent, treat, and reduce the harm caused by the use of tobacco, alcohol, and other drugs. Up to \$4 million in total grants is available in this round of funding. Applicants may apply for Large Grants in amounts of \$100,000 to \$400,000; or for Small Grants in amounts under \$100,000. In addition, the foundation's new Targeted Rapid Response Grant will provide funding of up to \$30,000 to support time-sensitive policy analyses that will advance knowledge on key issues of substance-abuse policy (alcohol, tobacco, and other drugs). <http://fconline.fdncenter.org/pnd/10004224/rwjf>

NEW Be A Youth Leader for Literacy – Deadline: Nov. 24, 2006 – Grants available for student-led projects. Youth Leaders for Literacy is an initiative to help youth plan and implement reading-related service projects. NEA will award 20 grants of \$500 each to support literacy projects that begin on NEA's Read Across America Day, March 2, 2007, and culminate on National & Global Youth Service Day, April 20-22, 2007. <http://www.nea.org/readacross/volunteer/>

NEW MyCOE Constellation Grants – Deadline: Oct. 20, 2006 – The My Community, Our Earth Partnership will award Six (6) stipends of \$1,500 each to support student participation in community-based projects using geographic methods or technologies for sustainable development.
http://www.aag.org/annualmeetings/SF2007/ill_paper.cfm

NEW American Federation for Aging Research Grants – Deadline: Dec. 15, 2006 – To assist in the development of the careers of junior investigators committed to pursuing careers in the field of aging research, AFAR provides up to \$60,000 for a one- to two-year award to junior faculty (M.D.s and Ph.D.s) to do research that will serve as the basis for longer term research efforts. Approximately fifteen grants of up to \$60,000 each will be awarded in 2007.
<http://fconline.foundationcenter.org/pnd/10004013/afar>

NEW American Foundation for Suicide Prevention Research Grants – Deadline: Dec. 15, 2006 – These research grants support studies that aim to increase understanding of the causes of suicide and factors related to suicide risk, or to test treatments and other interventions designed to prevent suicide. <http://fconline.foundationcenter.org/pnd/10003946/afsp>

NEW Behavioral Research in Cancer Grants – Deadline: Dec. 22, 2006; April 20, 2007; Aug. 22, 2007; Dec. 20, 2007; April 20, 2008; Aug. 21, 2008; Dec. 22, 2008 – The Division of Cancer Control and Population Sciences of the National Cancer Institute seeks behavioral research applications in cancer control from new investigators or established scientists refocusing their research interests to behavioral research in cancer. This small grants program is designed to aid and facilitate the growth of a

nationwide cohort of scientists with a high level of research expertise in behavioral cancer control research. <http://grants.nih.gov/grants/guide/pa-files/PAR-06-458.html>

NEW Community Action Grants – Deadline: Jan. 15, 2007 – In 2007-08, the American Association of University Women Educational Foundation's Community Action Grants program will award one- and two-year grants. One-year grants (\$2,000 to \$7,000) provide seed money for new projects. Two-year grants (\$5,000 to \$10,000) provide start-up funds for longer-term programs that address the particular needs of the community and develop girls' sense of efficacy through leadership or advocacy opportunities. Topic areas are unrestricted, but should include a clearly defined activity that promotes education and equity for women and girls <http://fconline.foundationcenter.org/pnd/10004025/aauw>

AWARDS, FELLOWSHIPS & SCHOLARSHIPS

Listed below are **NEW** announcements only. To view all previously listed announcements, please visit [CCPH's AWARDS, FELLOWSHIPS, & SCHOLARSHIPS PAGE](#)

NEW American Psychiatric Foundation Awards for Advancing Minority Mental Health – Deadline: Nov. 1, 2006 – Formerly known as the Minority Mental Health Awards, the awards recognize those who have undertaken innovative and supportive efforts to raise awareness of mental illness in underserved minority communities. Four awards of \$5,000 each are given each year. <http://fconline.fdncenter.org/pnd/10004218/psychfoundation>

NEW Racial Justice Fellowships – Deadline: Oct. 2, 2006 – The Institute for Justice and Journalism at University of Southern California Annenberg School for Communication will award Fellowships in early October to ten experienced journalists to support exemplary journalism about civil rights, equity, and opportunity in America. Fellows will participate in a weeklong conference at the Institute in Los Angeles and a follow-up conference at the Poynter Institute for Media Studies in St. Petersburg, Florida. A stipend of \$2,000 will be provided upon completion of an approved project. <http://fconline.foundationcenter.org/pnd/10004135/justicejournalism>

NEW Henry B. Betts Award to Honor Individual for Work on Behalf of People With Disabilities – Deadline: Oct. 6, 2006 – The American Association of People with Disabilities is accepting nominations for this annual award, which honors an individual whose work and scope of influence have significantly improved the quality of life for people with disabilities. The award winner receives an unrestricted \$50,000 cash award at AAPD's annual Leadership Gala in Washington, D.C. <http://fconline.foundationcenter.org/pnd/10004019/aapd-dc>

NEW Robert Wood Johnson Scholars in Health Policy Research Program – Deadline: Oct. 25, 2006 – The Robert Wood Johnson Scholars in Health Policy Research Program helps develop a new generation of creative health policy thinkers and researchers within the disciplines of economics, political science, and sociology. The program selects up to twelve highly qualified individuals for two-year fellowships at one of three nationally prominent universities with the expectation that they will make important research contributions to future health policy in the United States. <http://fconline.foundationcenter.org/pnd/10003942/rwjf>

NEW Accessible America Awards Program – Deadline: Oct. 31, 2006 – Communities will compete for \$35,000 in cash prizes by submitting an official Accessible America application signed by the mayor or chief elected official, describing how the city or town (or county representing unincorporated communities within its borders) provides opportunities for citizens with disabilities to participate fully in community life. <http://fconline.foundationcenter.org/pnd/10004126/nod>

NEW Women in Science Fellowship Program – Deadline: Oct. 31, 2006 – L'Oreal USA's national program aims to annually recognize, reward, and support five women post-doctoral researchers in the United States who are pursuing careers in the life and physical/material sciences, as well as mathematics,

engineering, and computer science. L'Oreal USA has doubled the value of its fellowship grants from a current \$20,000 to \$40,000 for the 2007 program.

<http://fconline.foundationcenter.org/pnd/10004027/lorealusa>

NEW International Gates Award for Global Health – Deadline: Oct. 31, 2006 – the International Gates Award for Global Health annually recognizes an organization that has made a major and lasting contribution to the field of global health. The \$1 million award was established to reward organizations that have developed processes for improving health, especially in resource-poor settings, with measurable results. <http://fconline.foundationcenter.org/pnd/10003581/globalhealth>

NEW International Dissertation Research Fellowship for Research Outside the United States – Deadline: Nov. 1, 2006 – The International Dissertation Research Fellowship program supports full-time graduate students in the humanities and social sciences who are enrolled in doctoral programs in the United States, regardless of citizenship, conducting dissertation research outside the United States. <http://fconline.foundationcenter.org/pnd/10004122/ssrc>

NEW Support for Research on Immigrant Children – Deadline: Nov. 1, 2006 – The Foundation for Child Development Young Scholars Program provides approximately four fellowships of up to \$150,000 each over a maximum period of three years to study issues affecting the development of young immigrant children in the United States. The program aims to stimulate basic and policy-relevant research focused on the early education, health, and well-being of immigrant children from birth to age ten, particularly those who are living in low-income families.

<http://fconline.foundationcenter.org/pnd/10003939/fcd-us>

NEW NIOSH Support for Conferences and Scientific Meetings – Deadline: (annually) Nov. 1, 2006; March 1, 2007; July 1, 2007 – National Institute for Occupational Safety and Health's (NIOSH) offer support of scientific meetings. Proposed conferences and scientific meetings must support the mission of CDC and NIOSH. <http://grants.nih.gov/grants/guide/pa-files/PA-05-005.html>

NEW Dissertation Fellowship Program in Education Improvement – Deadline: Nov. 1, 2006 – The Spencer Foundation's fellowship programs support scholars engaged in educational research and seeks to encourage a new generation of scholars from a wide range of disciplines and professional fields to undertake research relevant to the improvement of education.

<http://fconline.foundationcenter.org/pnd/10003731/spencer>

NEW 100 Best Communities for Young People Competition – Deadline: Nov. 3, 2006 – America's Promise-The Alliance for Youth has launched the 2007 100 Best Communities for Young People competition and invites communities across the United States to compete for the honor of being named one of the nation's great places to grow up. The program showcases communities that do an outstanding job of fostering safe and caring environments that effectively educate young people and help them become productive citizens.

<http://fconline.foundationcenter.org/pnd/10004332/americanpromise>

NEW Hilton Humanitarian Prize – Deadline: Nov. 6, 2006 – Conrad N. Hilton Foundation Invites Nominations for the 2007 Conrad N. Hilton Humanitarian Prize for organizations that have made extraordinary contributions toward alleviating human suffering anywhere in the world. The \$1.5 million prize is presented annually to an established nonprofit, charitable, or nongovernmental organization.

<http://fconline.foundationcenter.org/pnd/10003948/hiltonfoundation>

NEW Andrew W. Mellon Foundation/ACLS Early Career Fellowships – Deadline: Nov. 15, 2006 – The American Council of Learned Societies is launching a significant new fellowship program that will provide support for young scholars to complete their dissertations and, later, to advance their research after being awarded the Ph.D. The program will award fellowships in two categories: Dissertation Completion Fellowships; and Fellowships for Recent Doctoral Recipients.

<http://fconline.foundationcenter.org/pnd/10003729/acsl>

NEW NetAid Global Action Awards – Deadline: Nov. 30, 2006 – The NetAid Global Action Awards honor high school students in the United States who have organized and led a project that has impacted

people in poor countries or raised awareness about global poverty in their own communities. The awards celebrate young people who have shown leadership in areas such as preventing HIV/AIDS, alleviating hunger, and improving access to education.

<http://fconline.foundationcenter.org/pnd/10003050/netaid>

NEW William B. Graham Prize for Health Services Research – Deadline: Dec. 1, 2006 –

The William B. Graham Prize for Health Services Research, honors an individual researcher for achievement in health services research, particularly research that has a lasting impact on the healthcare system and the way health care is delivered. The prize consists of an individual award of \$25,000. In addition, \$25,000 will be awarded to a not-for-profit institution designated by the recipient to support his or her work. <http://fconline.foundationcenter/pnd/10003818/aupha>

NEW AHA NOVA Community Health Award – Deadline: Dec. 1, 2006 – This award honors hospital-led programs to improve community health. <http://www.aha.org/aha/awards-events/awards/novaaward.html>

NEW Schomburg Center for Research in Black Culture Scholars-in-Residence Program – Deadline: Dec. 1, 2006 – The Schomburg Center residency program assists scholars and professionals whose research on the black experience can benefit from extended access to the resources of the New York Public Library's Schomburg Center for Research in Black Culture. Fellowships are awarded for continuous periods of six or twelve months at the Schomburg Center with maximum stipends of \$25,000 for six months and \$50,000 for twelve months.

<http://fconline.foundationcenter.org/pnd/10004015/nyp>

NEW Medical Students Invited to Apply for Applied Epidemiology – Deadline: Dec. 4, 2006

– Funded by a grant from Pfizer, Inc. and administered by the CDC Foundation, the CDC Experience: Applied Epidemiology Fellowship at Centers for Disease Control and Prevention provides medical students with an applied hands-on training experience in epidemiology and public health.

<http://fconline.fdncenter.org/pnd/10002720/cdc>

NEW Jonathan Mann Award for Global Health and Human Rights – Deadline: Jan. 15, 2007

– Nominations open for this award, which is bestowed annually to a leading practitioner in health and human rights and comes with a substantial financial reward to allow its recipients a measure of freedom to pursue their work in the area of global health and human rights.

<http://fconline.foundationcenter.org/pnd/10004023/globalhealth>

NEW Google Grants: In-Kind Advertising Services to Nonprofits – Deadline: Open – The Google Grants program supports organizations that share the company's philosophy of community service worldwide in areas such as science and technology, education, global public health, the environment, youth advocacy, and the arts. Designed for 501(c)(3) nonprofit organizations, Google Grants is a unique in-kind advertising program that harnesses the power of Google's flagship advertising product, Google AdWords, to non-profits seeking to inform and engage their constituents online.

<http://fconline.foundationcenter.org/pnd/10003588/google>

CALLS FOR PAPERS & PRESENTATIONS

Listed below are **NEW** announcements only. To view all previously listed announcements, please visit [CCPH's CALLS FOR PAPERS & PRESENTATIONS PAGE](#)

NEW Call for Abstracts: Community-University Partnerships: How Do We Achieve the Promise? – Deadline: Sep. 30, 2006 –

This CITA International Conference will be held in Lowell, Massachusetts, April 26 - April 28, 2007. One page abstracts are due by September 30, 2006. Video presentations and poster sessions are welcome. For more information, contact **CCPH member Linda Silka** at Linda_Silka@uml.edu or visit <http://www.uml.edu/com/CITA/>

NEW **Call for Papers: Democracy, Citizenship and Higher Education International**

Conference – Deadline: Oct. 1 2006 – The International Conference, titled Democracy, Citizenship and Higher Education: Dialogue between Universities and Community, will be held at Vytautas Magnus University in Kaunas, Lithuania, November 23-34, 2006. Contact: Dainius Genys, Vytautas Magnus University, d.genys@smf.vdu.lt
<http://www.civicus.lt/index.php?PageID=18>

NEW **Call for Papers: Society for Prevention Research 15th Annual Meeting – Deadline:**

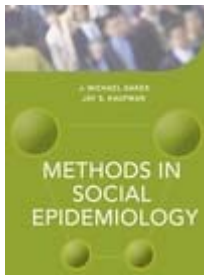
Oct. 16, 2006 – The Society for Prevention Research's 15th Annual Meeting "Advancing Science-Based Prevention: Creating Real World Solutions" will take place in Washington, DC on May 30-June 1, 2007. All participants are encouraged to submit abstracts for individual paper and poster presentations, organized paper symposium, poster forums, roundtable discussions/scientific dialogues and technology demonstrations. <http://www.preventionresearch.org/meeting.php>

NEW **Call for Papers: Journal of Prevention and Intervention in the Community –**

Deadline: Nov. 15, 2006 – The editors invite manuscripts for a special issue on homelessness, services, and interventions designed for all ages of the homeless population. Contact Jordan Braciszewski at jmb@wayne.edu

PUBLICATIONS

CCPH Members receive discounts on publications by [Jossey-Bass](#) as well as all [CCPH publications](#)



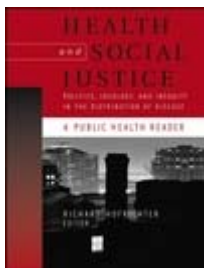
Methods in Social Epidemiology

Social epidemiology is the study of how social interactions—social norms, laws, institutions, conventia, social conditions and behavior—affect the health of populations. This practical, comprehensive introduction to methods in social epidemiology is written by experts in the field. It is perfectly timed for the growth in interest among those in public health, community health, preventive medicine, sociology, political science, social work, and other areas of social research.

CCPH Members receive a 15% discount when ordered through the **CCPH** website!

Ordering information:

<http://depts.washington.edu/ccph/josseybass.html>



Health and Social Justice: Politics, Ideology, and Inequity in the Distribution of Disease

Health and Social Justice draws on the growing body of recent literature to offer a comprehensive collection of articles written by a panel of expert contributors who represent a broad range of fields—sociology, epidemiology, public health, ecology, politics, organizing, and advocacy. Each article explores a particular aspect of health inequalities and demonstrates how the sources of health inequalities are rooted in injustices associated with racism, sex discrimination, and social class. This important book examines the political implications of various perspectives used to explain health inequities and explores alternative strategies for eliminating them.

CCPH Members receive a 15% discount when ordered through the **CCPH** website!

Ordering information:

<http://depts.washington.edu/ccph/josseybass.html>

New Issue of Social Medicine Published

The second issue of Social Medicine, an open-access Ejournal, is now available. It includes an editorial about the impact of the Iraqi War on clinical practice in the US, a classic paper by Sidney and Emily Kark "On Social Medicine" with an introduction by Dr. Jaime Gofin, a video produced in 1970 about one of the first Community Health Centers in the US (Mount Bayou, Mississippi) as well as News and Events. A Spanish version of this number will be published in September and the journal will publish simultaneously in English and Spanish in October.

English URL: www.socialmedicine.info

Spanish URL: www.medicinasocial.info