



PARTNERSHIP MATTERS

Member Newsletter of Community-Campus Partnerships for Health

Promoting health through partnerships between communities and higher educational institutions

October 27, 2006
Volume VIII • Issue 20

[Message From Our Program Director](#)

[News From CCPH](#)

[Membership Matters](#)

[Members in Action](#)

[Upcoming Events](#)

[Announcements](#)

[Employment Opportunities](#)

[Grants Alert!](#)

[Awards, Fellowships & Scholarships](#)

[Calls for Papers & Presentations](#)

[Publications](#)

[New & Renewing Members](#)

[Archives](#)

Community-Campus Partnerships for Health

UW Box 354809
Seattle, WA 98195-4809

Tel. (206) 543-8178
Fax. (206) 685-6747

ccphuw@u.washington.edu

www.ccpsh.info

Partnership Matters newsletter is a member benefit of Community-Campus Partnerships for Health

CALL FOR EXHIBITORS & COSPONSORS CCPH 10TH ANNIVERSARY CONFERENCE *Mobilizing Partnerships for Social Change*

APRIL 11-14, 2007, TORONTO

**For more information, visit
<http://depts.washington.edu/ccph/conf-exhibiting.html>**

ONLINE CURRICULUM ON DEVELOPING AND SUSTAINING CBPR PARTNERSHIPS NOW AVAILABLE

The Product of a Collaboration Involving 9 Organizations in the US and Canada

Developing and Sustaining Community-Based Participatory Research Partnerships: A Skill-Building Curriculum, is now available online at www.cbprcurriculum.info

As interest in community-based participatory research (CBPR) grows, there is a growing need and demand for educational resources that help build the knowledge and skills needed to develop and sustain effective CBPR partnerships. This evidence-based curriculum¹ is intended as a tool for community-institutional partnerships that are using or planning to use a CBPR approach to improving health. It can be used by partnerships that are just forming as well as mature partnerships.

Those using the curriculum will:

- Develop a deeper understanding of the basic principles of CBPR and strategies for applying them
- Understand the key steps involved in developing and sustaining CBPR partnerships
- Identify common challenges faced by CBPR partnerships and suggested strategies and resources for overcoming them
- Develop and enhance skills for all partners that will enhance their capacity for supporting and sustaining authentic CBPR partnerships

Each of the 7 units in the curriculum include:

- Learning objectives
- In-depth content information about the topic(s) being presented
- Examples and interactive exercises that are designed to trigger discussion and to help better understand the concepts being presented
- Citations and suggested resources

The curriculum was developed by the Community-Institutional Partnerships for Prevention Research Group with funding from the Prevention Research Center Program Office at the Centers for Disease Control and Prevention (CDC) through a cooperative agreement with the Association of Schools of Public Health (see list of partner organizations below). Generous funding from the Wellesley Institute enabled the curriculum to be made available online.

Periodically, training workshops are offered based on the curriculum. The next opportunity is the November 4 continuing education institute on CBPR held as part of the American Public Health Association conference in Boston. For details, visit

Find out more about [membership benefits](#) and how you can [join CCPH today!](#)

Newsletter Editor
Annika LR
Sgambelluri

Contact us:
ccphpm@u.washington.edu

©2006 Community-Campus
Partnerships for Health

Partnership Matters
Newsletter

Submission Guidelines

We welcome announcements, comments and questions from you! Please forward them to the PM Editor at ccphpm@u.washington.edu.

Submission Guidelines:

- Please limit announcements and questions to not more than 100 words. As for articles and editorials, not more than 200 words;
- Provide the names of all authors, their current institutional affiliations and/or photos;
- Explain all abbreviations and unusual terms when first used.

http://www.apha.org/meetings/continuing_ed.htm#CEIs

It is also possible to arrange customized delivery of the curriculum by the authors and other members of the CCPH Consultancy Network who are skilled in CBPR. For more information, contact CCPH by email at ccphuw@u.washington.edu or by phone at (206) 543-8178.

Partner Organizations Comprising the Community-Institutional Partnerships for Prevention Research Group:

- Community-Based Public Health Caucus of the American Public Health Association
- Community-Campus Partnerships for Health
- Community Health Scholars Program
- Detroit Community-Academic Urban Research Center
- Harlem Community & Academic Partnership
- National Community Committee of the CDC Prevention Research Centers
- Seattle Partners for Healthy Communities
- Wellesley Institute
- Yale-Griffin Prevention Research Center

¹The Examining Community-Institutional Partnerships for Prevention Research Group. Building and Sustaining Community-Institutional Partnerships for Prevention Research: Findings from a National Collaborative, Forthcoming in Journal of Urban Health 2006; 83(6).

2006 YOUR CANDIDATES-YOUR HEALTH VOTER GUIDE WEB SITE

Your Candidates-Your Health is the first national voter education initiative focused exclusively on Congressional candidates' positions on investment in medical, health and scientific research and other research-related policy issues. Visit www.yourcandidatesyourhealth.org and use the convenient research tools to see where your candidates stand.

The Your Candidates-Your Health Web site also features the findings of their latest public opinion poll, many of which correspond to questions asked of candidates. The results demonstrate that research-related issues will be important in the November elections. A Spanish-language version of the Web site will be launched very soon!

If your candidates have not yet responded to the Your Candidates-Your Health questionnaire, please encourage them to do so. Available Web site and e-mail addresses are provided on each candidate's page at www.yourcandidatesyourhealth.org. An easy way to give your candidates all of the details on the initiative is by sending the link to this recent ad in The Hill newspaper: <http://capwiz.com/ram/utr/1/FRLCGHUYWB/BEHPGIDJBC/875826881>. They will accept responses from candidates up until the November election.

Research!America and the Albert and Mary Lasker Foundation extend grateful thanks to their supporting partners: American Heart Association, Association of American Medical Colleges, The Hill newspaper, National Alliance for Hispanic Health and Society for Neuroscience for helping to support this resource.

For more information on Your Candidates-Your Health, please contact Stacie Propst, PhD, Director of Science Policy at Research!America. Stacie can be reached at (703) 739-2577, ext. 43 or via e-mail at spropst@researchamerica.org

REPORT FINDS SHARP INCREASE IN COLLEGE STUDENT VOLUNTEERING

Evidence Points to Rising Civic Engagement Since 9/11

Volunteering among college students has risen sharply in the years since the 9/11 attacks, suggesting the possible emergence of a new civic generation, according to the most comprehensive federal study ever conducted of college student volunteering in the United States.

The "College Students Helping America" report released by the federal Corporation for National and Community Service found that college student volunteering increased by 20 percent between 2002 and 2005, more than doubling the growth in the adult volunteering rate. It found that 3.3 million college students volunteered in 2005 - nearly 600,000 more students than three years ago -- building strong momentum toward a national goal of five million college student volunteers by 2010.

Noticeably, the growth in volunteering over the four-year period was generated primarily by youths who attended high school or were first-year college students during the terrorist attacks of September 11, 2001. The vast majority, or 84 percent, of current college student volunteers in the study were of high-school age during the attacks of 2001. They witnessed the heroic response of police officers, firefighters and other public servants who made tremendous personal sacrifices to guide victims and the nation through the traumatic event.

The Corporation conducted the study of college volunteers analyzing data collected from 2002 to 2005 as part of the Current Population Survey (CPS), a comprehensive and scientifically rigorous survey of 60,000 American households conducted by the U.S. Census Bureau and the Bureau of Labor Statistics. It is the largest national study showing trends in college student volunteering and the most comprehensive analysis of volunteering by college students.

The report contains a previously released list of state volunteer rankings for college students that finds that college volunteer rates in the states range from 21.4% to 62.9%. Six of the 10 states that rank in the top ten based on overall volunteering rates also rank in the top ten for college student volunteering rates. The top states for college student volunteering were Utah, Idaho, Oklahoma, Vermont, and Nebraska.

The report brings a wealth of welcome news to those working to expand college service. College student community service and civic engagement are key elements of the new five-year strategic plan of the Corporation for National and Community Service. The Corporation is working with other federal agencies, colleges and universities, higher education and student associations, and nonprofit organizations to increase the number of college students volunteering each year to 5 million by 2010.

For more information, go to <http://www.nationalservice.gov>

MESSAGE FROM OUR PROGRAM DIRECTOR



Kristine Wong

"It has given me a deeper understanding of [the] expectations of partnerships and how to advocate collectively for our mutual goals..."

~Oregon CBPR Workshop Participant

I'm excited to report back about a series of urban and rural workshops CPH co-sponsored with the Northwest Health Foundation (NWHF) on developing and sustaining community-based participatory research (CBPR) partnerships across the state of Oregon in August and September 2006. The workshops in Portland, Corvallis, LaGrande/Cove, and Medford were held for a local audience, with local residents playing a key part in planning and implementation. The workshops serve as a model for how local foundations can partner with an organization such as CPH, and the community, to build capacity for CBPR partnerships on a local level.

The immediate and overwhelming response to the workshops (evidenced by filling to capacity in a matter of days) illustrated the interest and demand for CBPR trainings – registrants were from as far away as Arkansas and California. Attended mainly by local community members, community-based organizations, faculty/staff at higher educational institutions, local health departments/government agencies, and even institutional review board administrators, the range of experiences, perspectives, and strategies shared by this diverse group of participants enriched the discussions taking place throughout the day.

The workshops' training material was based on the "[Developing and Sustaining Community-Based Participatory Research Partnerships](#)" curriculum written by the [Community-Institutional Partnerships for Prevention Research Group](#) (composed of CCPH and 9 other project partners). Beginning with an introduction to the CBPR approach to research, participants learned about the key elements in developing and sustaining these partnerships, broken down into four topics: (1) identifying and selecting partners, setting priorities, building trust and communication, (2) setting up infrastructure/tools and strategies to support the partnership, (3) addressing funding and sustainability issues, and (4) conducting participatory evaluation.



World Cafe brainstorming exercise in Medford

Each topic was presented from 3 different approaches, beginning with an overview of the general principles and tenets, moving into a case story of how local practitioners addressed this topic in their partnership, and ending with a small group exercise and discussion that encouraged participants to apply the material to their own particular project. Speakers were also encouraged to use creative methods in their presentations to convey the spirit of CBPR.

This approach to teaching resulted in a number of innovative ways that got participants enthused and engaged about developing and sustaining CBPR partnerships. In Portland, Noelle Wiggins (Community Capacitation Center, Multnomah County Health Department) employed popular education

methods when facilitating the "Introduction to CBPR" session; Noelle, Star Waters, and Alicia Lopez (from the *Poder es Salud/Power for Health* project) developed and performed a *telenovella* (soap opera) to illustrate the partnership priority setting process; Kanae Hayashi (Asian Family Center) shared a case study of how her organization used the Rapid Assessment Response and Evaluation method to assess and evaluate HIV/AIDS and intimate partner violence in the Asian American/Pacific Islander community.



Nancy Findholt & Vicky Brogoitti share the UC Fit Kids CBPR case study with LaGrande/Cove participants

In Corvallis, two local community members, along with Therese Waterhous and Libby McCulley from Oregon State University - Corvallis, shared key lessons learned from the partnership building process between the "town" and the "gown;" in LaGrande/Cove, participants discussed specific challenges of developing CBPR partnerships in rural settings, with an opening address given by Stephen Kliewer from the Wallowa Valley Center for Wellness. Vicky Brogoitti, with the Union County (UC) Commission on Children & Families, and her academic partner Nancy Findholt (Oregon Health Sciences University School of Nursing, LaGrande) led participants through the work they are doing to build infrastructure, trust, and communication between partners of the UC Fit Kids project, a CBPR project (partners include six school districts, the local hospital, public health department, agricultural extension service, and several smaller community-based programs) developing community- and school-based strategies for the prevention of childhood obesity that are

appropriate for a rural community.

Finally, in Medford, Luis Navarrette (Board Member of the Health Education Center of Southwest Oregon, El Programa Hispano Coordinator), Kathy Bryon (Gordon Elwood Foundation), and Dee Anne Everson (United Way, Jackson County) – partners who work together on an educational intervention project targeting Latino/a youth - engaged participants in a highly interactive "World Café" planning exercise, where participants from all sectors brainstormed and identified key characteristics, strategies, and methods for developing and sustaining CBPR partnerships. As a result of this collaborative exercise, participants realized the wide array of wisdom, knowledge, and expertise already present in their community about building these partnerships.

By providing a forum for shared learning, cross-sector dialogue, and opportunities to build networks and relationships within a community, we hope that the knowledge, strategies, and promising practices shared in these workshops will continue to be disseminated throughout the community, and that the dialogue on how to meet the challenges of CBPR partnerships will continue as well. Ultimately (and perhaps fittingly), before a community-institutional partnership can truly build upon the strengths of the community, the partners must first build a community among themselves.



We hope to replicate this model with other locally-based funders, community groups and academic institutions across the country. If you are interested in initiating a CBPR partnership training in your community, please contact Kristine Wong, CCPH Program Director, at kristine@u.washington.edu.

CCPH and the Northwest Health Foundation will also be co-publishing a proceedings report about these workshops in early 2007. To receive a copy, please contact Kristine Wong or David Rebanal, Northwest Health Foundation Program Officer, at rebanal@nwhf.org

NEWS FROM CCPH

CCPH 10th Anniversary Conference

April 11 – 14, 2007 in Toronto

**Mobilizing Partnerships
for Social Change**

Call for Exhibitors & Cosponsors!



For more information, visit
<http://depts.washington.edu/ccph/conf-overview.html>

CCPH Consultancy Network



To arrange a customized workshop or consultation through the **CCPH Consultancy Network**, contact CCPH executive director Sarena Seifer at sarena@u.washington.edu or visit <http://depts.washington.edu/ccph/mentor.html>

To view presentations and handouts from past **CCPH Consultancy Network** events, visit <http://depts.washington.edu/ccph/pastpresentations.html>

MEMBERSHIP MATTERS

Are You Enjoying ALL of the Benefits CCPH Offers?



We are pleased to announce a partnership with **Johns Hopkins University Press** that offers **CCPH members a 20% discount** on subscriptions to two journals:

Progress in Community Health Partnerships: Research, Education, and Action (PCHP)

Journal of Healthcare for the Poor and Underserved (JHCPU)

PCHP facilitates dissemination of programs that use community partnerships to improve public health, promotes progress in the methods of research and education involving community health partnerships, and stimulates action that will improve the health of people in communities. Known to some of you as "the new journal of CBPR", the first issue of the quarterly PCHP will be out this fall. JHCPU, also published quarterly, focuses exclusively on contemporary health care issues of low-income, under-represented, and other medically underserved communities.

The **CCPH Member discount** applies to individual and student print and online journal subscriptions as well as to all books published by Johns Hopkins University Press. To receive the CCPH member discounted rate, follow the instructions provided in the email that notified you about this issue of Partnership Matters. If you have any questions, please contact CCPH membership coordinator, Anne Moreau at amoreau@u.washington.edu

To learn more about **JHCPU**, visit http://www.press.jhu.edu/journals/journal_of_health_care_for_the_poor_and_underserved/index.html

To learn more about **PCHP**, visit <http://pchp.press.jhu.edu>

Not Yet A Member? Join Today!

If you are interested in becoming a member of **CCPH** or need to renew your membership, [join today!](#)

MEMBERS IN ACTION

Congratulations to **CCPH member Doug Brugge** for co-editing a new book titled, *The Navajo People and Uranium Mining*. The book was co-edited with Timothy Benally and Esther Yazzie Lewis with a forward by Stewart L. Udall. This edited book is the latest product of 12 years of community-based participatory research. The Navajos co-edited and co-authored most of the chapters and about half the book consists of oral histories. For more information, visit <http://www.gazellebookservices.co.uk/ISBN/0826337783.htm>

Congratulations to **CCPH member Nina Wallerstein** and Bonnie Duran for their recently published article titled "Using Community-Based Participatory Research to Address Health Disparities". Learn more at <http://hpp.sagepub.com/cgi/content/abstract/7/3/312>

UPCOMING EVENTS

For details on these new listings and all previously listed upcoming events, visit [CCPH's CONFERENCE PAGE](#)

CCPH at Upcoming Events!

NOVEMBER 2006

- ▶ **November 4-8, 2006 • 134th American Public Health Association Annual Meeting • Boston, Massachusetts**

Two CBPR Continuing Education Institutes are being offered at APHA in partnership with the APHA Community-Based Public Health Caucus. Details available at <http://www.apha.org/meetings/index.htm>

Developing and Sustaining Partnerships for Community-Based Participatory Research will be held November 4 from 1:30-5:00 pm and is based on the training curriculum developed by the Examining Community-Institutional Partnerships for Prevention Research Group. For more info about the group, visit http://depts.washington.edu/ccph/pdf_files/Project%20Fact%20Sheet%20Apr%202006.pdf.

Community-Based Participatory Research: Working With Communities to Analyze Data and Get to Outcomes will be held November 5 from 8:00-11:30 am.

CCPH will also be co-hosting booth #1220 in the exhibit hall with the Kellogg Health Scholars Program. We are looking for CCPH member volunteers to help "staff" the booth. If you are interested in signing up for an hour or two, please email CCPH program assistant Ruslan Nikitin at nikitinr@u.washington.edu

- ▶ **November 15-17, 2006 • Community Action for a Renewed Environment (CARE) National Training Workshop • Seattle, Washington**

This workshop convenes the grantees of the Environmental Protection Agency's CARE Program. **CCPH executive director Sarena Seifer** will be speaking about Building Partnerships on a panel scheduled for November 15 at 4pm. For more information about the workshop, email Hank Topper at Topper.Henry@epamail.epa.gov For more information about the CARE Program, visit <http://www.epa.gov/care>

APRIL 2007

- ▶ **April 11-14, 2007 • CCPH's 10th Anniversary Conference - Mobilizing Partnerships for Social Change • Toronto, Ontario, Canada**

CCPH invites you to share your knowledge, experience and lessons learned with hundreds of colleagues who - like you - are passionate about the power of partnerships to transform communities and academe. The conference is expected to draw a diverse group of participants from across Canada, the U.S. and other countries.

Call for Exhibitors & Cosponsors Now Available! For details, visit <http://depts.washington.edu/ccph/conf-exhibiting.html>

Never been to a CCPH conference? Check out presentations from **CCPH's 9th conference**, held May 31-June 3, 2006 in Minneapolis, MN USA at <http://depts.washington.edu/ccph/pastpresentations.html>

JUNE 2007

- ▶ **June 26-29, 2007 • Summer Institute on Community-Based Participatory Research •**
Jackson, Mississippi

CCPH joins with the Historically Black Colleges and Universities Faculty Development Network and the Center for Civic Engagement & Social Responsibility at Tougaloo College in cosponsoring this intensive team-based institute. For more information, visit <http://www.hbcufdn.org>

To stay on top of the latest CBPR news, funding opportunities, conferences and other resources, subscribe to the free CBPR listserv co-sponsored by CCPH and the Wellesley Institute at <http://mailman1.u.washington.edu/mailman/listinfo/cbpr>

New Event Listings

For details on these new listings and all previously listed upcoming events, visit [CCPH's CONFERENCE PAGE](#)

November 17-18, 2006 • 4th Annual Congressional Tri-Caucus Minority Health Summit •
Washington, DC • dwatts@cpmhinc.org

March 14-16, 2007 • 4th Annual Gulf South Summit on Service-Learning and Civic Engagement through Higher Education • New Orleans, LA • <http://cps.tulane.edu/summit>

March 18-23, 2007 • Community Based Cancer-Control: A Seminar for American Indian and Alaska Native Community Health Advocates • Seattle, WA • moriarty@ohsu.edu

April 17-21, 2007 • Association of American Geographers Annual Meeting • San Francisco, CA • <http://www.aag.org/annualmeetings/SF2007/index.cfm>

June 10-15, 2007 • 19th International Union for Health Promotion and Education World Conference • Vancouver, BC Canada • <http://iuhpeconference.org/en/index.htm>

June 27-July 1, 2007 • The U.S. Social Forum • Atlanta, Georgia • <http://www.mghdisparitiessolutions.org/>

ANNOUNCEMENTS

Politics and Public Health: Dr. Marvin Malek Reflects on His Decision to Run for Lieutenant Governor of Vermont – Dr. Malek, internal medicine and public health physician in Barre, Vermont, speaks about his decision to run for Lieutenant Governor in the 2006 election. He describes personal daily frustrations in his political campaign as well as in his interactions with private insurance companies in what he calls our "dysfunctional health care system." Dr. Malek explains how the Vermont House passed a bill for a single statewide insurance fund that would cover all Vermonters in 2005, and in 2006 arrived at a bipartisan compromise plan called "Catamount Health," a scheme to expand private insurance through a combination of funds from Medicaid, a tobacco tax, and a "disease management" initiative. He reflects on what it is like to try to articulate a message for health care reform as well as a broad public health message through media, as a candidate in an election campaign and as the host of a radio program. Listen to the interview at: <http://www.publichealthradio.org/>

Photography Contest with Social Determinants of Health Theme –Documentary photography captures pressing social issues that we confront in our daily lives, often serving as a call to action. The medium can provide insights into complex, seemingly ambiguous situations. In this spirit, the Institute of Health and Social Policy invites submissions to a photography contest on Social Conditions and Health that explores the use of imagery to bring to light the social determinants of health, with their challenges and solutions. The committee's winning selections will be displayed on their website and in their building. Additionally, the Institute will pay \$100 each for four (4) of the winning photographs that it will choose to use in its publications. To participate, please send no more than three (3) samples of your original work as digital images to photo.ihsp@gmail.com by **Friday December, 15 2006**.

Number of Uninsured Americans Tops 46 Million

There are now 46.6 million uninsured Americans, an increase of 1.3 million between 2004 and 2005, according to new data from the U.S. Census Bureau. The number of uninsured children increased from 7.9 million to 8.3 million. In a report released last week, "Income, Poverty, and Health Insurance Coverage in the United States: 2005," the government also reports that the median household income in the country rose slightly between 2004 and 2005, while the number of Americans at or below the national poverty rate remained unchanged at 12.6 percent.

<http://www.census.gov/prod/2006pubs/p60-231.pdf>

EMPLOYMENT OPPORTUNITIES

Chairman of the Department of Population Health - Medical College of Wisconsin, Milwaukee, WI – **Review of applications will begin Dec. 1** - MCW is a private educational institution dedicated to nationally-recognized excellence in education, research, patient care and community and public health. We seek an individual with documented accomplishments and national recognition as a leader in Public & Community Health. For more information, contact Stephen Hargarten at hargart@mcw.edu

Non-Faculty Senior Research Associate – Community Health Systems Development, Georgia Health Policy Center, Atlanta, GA – **Review of applications will begin Dec. 1** – The Senior

Research Associate will lead the Community Health Systems Development team, oversee state and national community-based capacity-building projects, and craft a research agenda to connect, complement, and translate its work to inform health policy decisions that improve health. For more information, visit <http://www.gsu.edu> or contact Chris Parker at alhcp@langate.gsu.edu

Assistant/Associate Professor of Health Education & Health Promotion – Department of Community Health Sciences, School of Public Health, University of California at Los Angeles – The Department of Community Health Sciences seeks to fill a tenure-track faculty position. Their multidisciplinary faculty has a strong history of ongoing research and graduate education in Health Education & Health Promotion. Hiring will be at the assistant or early associate professor level. For more information, contact Virginia Li at 310-825-8132 or vcl@ucla.edu

Campaigner/Organizer – Center for Food & Justice, Los Angeles, CA – The Campaigner/Organizer will work closely with our Community Organizer and CAFE Program Manager to strengthen the HSFC, develop and implement strategies for improving school food on specific LAUSD campuses and district-wide, manage a grant focused on school food policy implementation, and coordinate community-driven campaigns to improve food access in Project CAFE (Community Action on Food Environments--a community based participatory research project looking at healthy food access) neighborhoods. <http://departments.oxy.edu/hr/newsalary.html>

GRANTS ALERT!

Listed below are **NEW** announcements only. To view all previously listed grant alerts, please visit [CCPH's FUNDING OPPORTUNITIES PAGE](#)

NEW State Farm Youth Service-Learning Projects– Deadline: Nov. 15, 2006 –

The State Farm Youth Advisory Board plans to fund \$5 million in service-learning projects, with grants of \$25,000 to \$100,000 each. The Request for Proposals focuses on 4 project areas: Disaster Preparedness, Driver Safety, Financial Education, and Access to Higher Education.

<http://www.statefarmyab.com/>

NEW New Investigators Network - II – Deadline: Nov. 17, 2006 – The New Investigators Network (NIN) is a multi-disciplinary, pan-Canadian group of committed, enthusiastic and talented researchers who are dedicated to conducting research on child and youth development. The NIN is managed by the Canadian Research Institute for Social Policy at the University of New Brunswick (UNB-CRISP). UNB-CRISP is inviting applications for a new cohort of new investigators who are dedicated to the study of children's learning, behavioural, and health outcomes.

<http://www.unb.ca/crisp>

NEW Clay Aiken Able-To-Serve Grand Funding – Deadline: Nov. 30, 2006 – The Bubel/Aiken Foundation and Youth Service America announced grants of up to \$1,000 to support youth-led service projects in which youth with and without disabilities serve their communities together. These grants support youth (ages 5-25), teachers, youth-leaders, youth-serving organizations, or organizations that serve people with disabilities in implementing service projects for National and Global Youth Service Day, April 20-22, 2007. <http://www.YSA.org/awards>

NEW NIH Clinical and Translation Science Awards – Letter of Intent Deadline: Dec. 18, 2006 – The Awards are intended to provide academic "homes" for clinical and translational science. The purpose of this initiative is to assist institutions to create a uniquely transformative, novel, and integrative academic home for Clinical and Translational Science that has the resources to train and advance a cadre of well-trained multi- and inter-disciplinary investigators and research teams with access to innovative research tools and information technologies to promote the application of new knowledge and techniques to patient care. <http://grants.nih.gov/grants/guide/rfa-files/RFA-RM-07-002.html>

NEW Cancer Education Grants Program – Deadline: Feb. 1, 2007; June 1, 2007; Oct. 1, 2007 – The National Cancer Institute has reissued its program announcement for Cancer Education (R25E) Grants Program. This Funding Opportunity supports the following types of programs: innovative educational programs intended to motivate biomedical and other health science students to pursue cancer related careers; short courses to update cancer research scientists in new scientific methods, technologies and findings; training of cancer care clinicians and community health care providers in evidence-based cancer prevention and control approaches; development of effective innovative education (dissemination) approaches to translate knowledge gained from science (discovery) into public health and community applications (delivery). <http://grants.nih.gov/grants/guide/pa-files/PAR-06-540.html>

AWARDS, FELLOWSHIPS & SCHOLARSHIPS

Listed below are **NEW** announcements only. To view all previously listed announcements, please visit [CCPH's AWARDS, FELLOWSHIPS, & SCHOLARSHIPS PAGE](#)

NEW State Farm Service-Learning Practitioner Leadership Award – Deadline: Nov. 3, 2006 – The State Farm Service-Learning Practitioner Leadership Award recognizes practitioners who have equipped young people to lead and serve, both through their direct work with youths and by nurturing other practitioners to expand their service-learning skills and knowledge. http://servicelearning.org/resources/funding_sources/index.php?popup_id=754

NEW State Farm Youth Leadership for Service-Learning Excellence Award – Deadline: Nov. 3, 2006 – The State Farm Youth Leadership for Service-Learning Excellence Award recognizes K-12 service-learning programs and projects that demonstrate outstanding youth leadership. http://servicelearning.org/resources/funding_sources/index.php?popup_id=755

NEW NIH Loan Repayment Program 2007 – Deadline: Dec. 1, 2006 – The five LRPs offered by the National Institutes of Health include the Clinical Research LRP, Clinical Research LRP for Individuals from Disadvantaged Backgrounds, Contraception and Infertility Research LRP, Health Disparities LRP, and Pediatric Research LRP. Through these programs, the NIH offers to repay up to \$35,000 annually of the qualified educational debt of health professionals pursuing careers in biomedical and behavioral research. <http://www.lrp.nih.gov>

NEW NCHS/AcademyHealth Health Policy Fellowship – Deadline: Jan. 8, 2007 – This program brings visiting scholars in health services research-related disciplines to the National Center for Health Statistics (NCHS) to collaborate on studies of interest to policymakers and the health services research community. <http://www.academyhealth.org/nchs>

NEW Alec Dickson Servant Leader Award – Deadline: Jan. 22, 2007 – The Alec Dickson Servant Leader Award honors exemplary leaders who have inspired the service-learning field, positively impacted the lives of young people, and motivated others to take up the banner of service. http://servicelearning.org/resources/funding_sources/index.php?popup_id=753

CALLS FOR PAPERS & PRESENTATIONS

Listed below are **NEW** announcements only. To view all previously listed announcements, please visit [CCPH's CALLS FOR PAPERS & PRESENTATIONS PAGE](#)

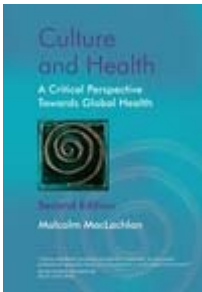
NEW Call for Manuscripts: New Canadian Journal of Applied Research on Learning – Deadline: Oct. 31, 2006 – The Canadian Council on Learning invites submissions for the first issue of its new, online peer-reviewed publication, the Journal of Applied Research on Learning (JARL), to be published in April 2007. JARL will be presented twice a year and will publish research that addresses specific, practical problems in learning. <http://www.ccl-cca.ca/CCL/Reports/Journal/jarl-first-call-for-submissions.htm>

NEW New Student Journal: Cases in Public Health Communication & Social Marketing – Deadline: Feb. 1, 2007 – Cases is a new on-line journal featuring peer-reviewed case studies in public health communication and marketing. Each case study will describe a public health program or some aspect of a program based, at least in part, on communication or marketing methods. They are currently seeking submissions for the first edition to be published in June 2007. <http://www.casesjournal.org>

NEW Call for Papers: Book About Death & Choice – The editors of the book (tentatively titled: Exit Freely: Men and Women Write About Death and Choice) are looking for a range of personal and analytic pieces examining the topic of choice in dying, just as writings emerging out of the women’s movement examined choice in reproduction. The editors want many voices represented in this collection. They are also interested in analytic contributions from the legal, political, ethical, religious, medical, and historical perspective on the issue of choice in dying. For more information, contact dperry2000@aol.com

PUBLICATIONS

CCPH Members receive discounts on publications by [Wiley/Jossey-Bass Publishers](#), [Johns Hopkins University Press](#), and [Community-Campus Partnerships for Health](#)



Culture and Health: A Critical Perspective Towards Global Health, 2nd Edition

Most Western health professionals practice in multicultural societies. The influence of culture on illness, health and rehabilitation is therefore very important. Despite this, most lower level health psychology texts skim over these differences and assume our traditional biomedical approach will be appropriate for all. In this completely revised and updated edition of a groundbreaking book, Malcolm MacLachlan redresses the balance by showing how social and cultural aspects interact with the purely physical: from assessment and treatment all the way through to effects on rehabilitation.

CCPH Members receive a 15% discount when ordered through the **CCPH** website!

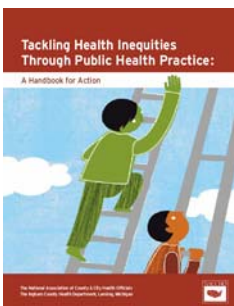
Ordering information:

<http://depts.washington.edu/ccph/josseybass.html>

Social Capital as a Public Policy Tool – Project Conclusion Policy Research Initiative Canada

What is social capital? Who benefits - and who does not? Is there a role for government? How can we measure it? Examining the potential of the concept of social capital to inform policy development and evaluation, the publications offer a clear framework for the analysis of the concept, identify policy and program areas where social capital makes a difference, and offer a strategic set of recommendations for testing new approaches, improved measurement, and policy action.

More information: <http://www.socialcapitalgateway.org/eng-pri.htm>



Tackling Health Inequities Through Public Health Practice

This book provides a knowledge base and innovative approaches for transforming everyday public health practice, departmental structure, and organizational culture in ways that may advance the attack on the root causes of inequities in the distribution of disease and illness. Through case studies and a conceptual framework, the book offers ideas, insight, and questions designed to strengthen LHD capacity to take action within a social justice perspective, in conjunction with their communities.

Ordering information:

http://www.naccho.org/pubs/product1.cfm?Product_ID=11

NEW & RENEWING MEMBERS

July & August 2006

Please Join Us in Welcoming the Following New CCPH Members

~ joined between July 1-August 31, 2006

E-Members

Kinsley, Richard, Ohio Campus Compact, Granville, OH
Kleb, George, Bon Secours of Maryland Foundation, Baltimore, MD
Osborne, Pushpa, Flinders Univ., Adelaide, South Australia, Australia

Individual Premium Members

Bjorklund, Darlene, North Memorial Medical Center, Robbinsdale, MN
Boyle, Rita, Leahy Community Health & Family Center, Univ. of Scranton, Scranton, PA
Chino, Michelle, Univ. of Nevada Las Vegas, Las Vegas, NV
Christiansen, Ann, Injury Research Center, Milwaukee, WI
Gubrium, Aline, Univ. of Massachusetts - Amherst, Amherst, MA
Hill, Barbara, Univ. of Wisconsin, Madison, WI
Hill, Mel, Institute of Higher Education, Athens, GA
Maguire, Ann, Medical College of Wisconsin, Milwaukee, WI
Mueller, Mary, Sixteenth St. Community Health Center, Milwaukee, WI
Renee, Michelle, Louisiana Office of Public Health, Baton Rouge, LA
Rodriguez-Burnett, Lisa, United Community Center, Milwaukee, WI
Sanders, James, Medical College of Wisconsin, Milwaukee, WI
Shaver, Constance, Horizons, Inc., Milwaukee, WI
Sherrod, Charles, Tools For Change-Albany, Albany, GA
Wykoff, Randy, East Tennessee State Univ., Johnson City, TN

Student Members

Akers, C. Ryan, Mississippi State Univ., Starkville, MS
Johnson, Amy, Spokane Regional Chamber of Commerce, Spokane, WA

Organizational Members

AIDS Communities of Toronto (ACT), Toronto, ON, Canada

Greenspan, Nicole
Husbands, Winston
Lee, Erica
Maxwell, John

Community-Univ. Partnership for the Study of Children, Youth, & Families, Edmonton, AB, Canada

Bisanz, Jeff
Chapman, Sherry Ann
Schnirer, Laurie
Tsui, Lily

Medical College of Georgia, August, GA

Miller, Jacqueline

Northeastern Ohio Universities, College of Medicine, Rootstown, OH

Myers, Nancy

Notre Dame College, South Euclid, OH

Jedlicka, Diane

Ontario HIV Treatment Network (OHTN), Toronto, ON, Canada

Carvalho, Adriana
Hammond, Rebecca
Li, Alan

Univ. of Washington-Yakima Valley Community Partnerships AND UW Educational Partnerships - Learning Technologies, Seattle and Toppenish, WA

Edwards, Sherry
Goldblatt, Joan
Valdez, Ricardo

Widener University, Chester, PA

Dowshen, Arlene
Krouse, Anne
Pickron-Davis, Marcine
Rasin, Joyce

Thank You to these Renew Members for their Continued Support!

~ joined between July 1-August 31, 2006

E-Members

Barley, Gwyn, Univ. of Colorado, Aurora, CO
Conss, Lyvier, Community College National Center for Community Engagement, Mesa, AZ
Gunderson, Sue, Sustainable Resources Center, Minneapolis, MN
Hope, Kathryn, Southwest Missouri State University, Springfield, MO
Jordan, Catherine, Univ. of Minnesota, Minneapolis, MN
Longenecker, Randall, Mad River Family Practice, West Liberty, OH
Lundberg, Paul, Clarion Partners, Ltd., Merced, CA
Schnaubelt, Thomas, Wisconsin Campus Compact, Kenosha, WI
Stein, Margot, Univ. of North Carolina, Chapel Hill, Chapel Hill, NC
Wallerstein, Nina, Univ. of New Mexico, Albuquerque, NM
Willis, Earnestine, Medical College of Wisconsin, Milwaukee, WI

Individual Premium Members

Beck, Barbra, Medical College of Wisconsin, Milwaukee, WI
Benz Scott, Lisa, State Univ. of New York, Stony Brook, NY
Garland, Sheryl, Virginia Commonwealth University Health System, Richmond, VA
Gitlow, Lynn, Husson College, Winterport, ME
Harkavy, Ira, Univ. of Pennsylvania, Philadelphia, PA
Kirkegaard, Margaret, Northwestern University, Downers Grove, IL
Miller, Allen, COPE Health Solutions, Los Angeles, CA

Organizational Members

Emory Univ., Atlanta, GA

Kite, Kathy
Salmon, Marla
Sibley, Lynn

Medical College of Georgia, Augusta, GA

Narsavage, Georgia
Salzer, Judith
Turner, Sandra

Northeastern Ohio Universities, College of Medicine, Rootstown, OH

Keck, William

Quinnipiac Univ., Hamden, CT

Hartmann, Kim
McGann, Elizabeth
O'Sullivan, Beth
Tufano, Roseanna

Univ. of Cincinnati, Cincinnati, OH

Couch, Sarah
King, Elizabeth
Leugers, Rebecca
Prendeville, Jo-Anne
Whalen, Tina

Univ. of North Florida, Jacksonville, FL

Kruger, Barbara
Loriz, Lillia

Univ. of North Texas Health Science Center, Fort Worth, TX

Coggin, Claudia
Trevino, Fernando

Univ. of Rochester, Rochester, NY

Andrus, Noelle

Univ. of Rochester, Rochester, NY

Lennon, Andrea
Newton, Gail

Univ. of Virginia School of Medicine, Charlottesville, VA

Alexander, Dela
Lieb, Darci
Lorntz, Breyette
Nadkarni, Mohan

Univ. of Washington, Seattle, WA

Diers, Jim
Goodheart, Christine
Ozuna, Robert