



PARTNERSHIP MATTERS

Member Newsletter of Community-Campus Partnerships for Health

Promoting health through partnerships between communities and higher educational institutions

February 20, 2009
Volume XI • Issue 4

[News From CCPH](#)

[Membership Matters](#)

[Upcoming Events](#)

[Announcements](#)

[Employment Opportunities](#)

[Grants Alert!](#)

[Awards, Fellowships & Scholarships](#)

[Calls for Papers & Presentations](#)

[Publications](#)

[New & Renewing Members](#)

[Archives](#)

Community-Campus Partnerships for Health

c/o Medical College of Wisconsin
Public and Community Health
Attn: Alicia Witten
8701 Watertown Plank Road
Milwaukee, WI 53226

Tel. (414) 456-8191
Fax. (414) 456-6431

ccph@mcw.edu

www.ccph.info

Partnership Matters newsletter is a member benefit of Community-Campus Partnerships for

FIVE ORGANIZATIONS SELECTED FOR NATIONAL DEMONSTRATION PROJECT TO IMPROVE COMMUNITY ENGAGEMENT IN CANCER CLINICAL TRIALS

Communities as Partners in Cancer Clinical Trials is pleased to announce that it has awarded grants to five cancer research organizations to improve cancer clinical trial participation through innovative community engagement strategies. The five organizations, known as "implementation partners," were selected from a nationwide pool of 43 applicants seeking to implement recommendations from the recently released national report, *Communities as Partners in Cancer Clinical Trials: Changing Research, Practice and Policy* (available at www.communitiesaspartners.org). The initiative is co-sponsored by CCPH and the Education Network to Advance Cancer Clinical Trials (ENACCT), with core funding from the Agency for Healthcare Research and Quality and the National Cancer Institute.

The five selected Implementation Partners are the University of North Carolina's Carolina Community Network, Chapel Hill, NC; Vanderbilt-Ingram Cancer Center, Nashville, TN; Grand Rapids Clinical Oncology Program, Grand Rapids, MI; Columbia St. Mary's Health System, Milwaukee, WI; and the American College of Surgeons Oncology Group (ACOSOG), Durham, NC (see brief descriptions below).

Reflecting on the partners and their proposed projects, *Communities as Partners* Co-Director, Margo Michaels, observes, "With 15 to 30 percent of national cooperative group trials closing early due to poor accrual, we are obligated to try different approaches in how we design and implement cancer clinical trials in this country. Many national reports, including ours, have identified community engagement as an essential element in any effort to address this crisis. Our partners have heeded this call to action with innovative local and national projects that will teach us about effective strategies for improving clinical trial participation, especially among underserved communities."

Communities as Partners Co-Director and CCPH Senior Consultant, Sarena D. Seifer adds, "We sought in this initiative to go significantly beyond traditional patient education on cancer clinical trials and select projects that can serve as models for meaningful, sustained community engagement. Our partners comprise a learning community with enormous potential to inform the emerging field of community-based participatory cancer clinical trials."

Those selected as 2009 Implementation Partners:

- **UNC Carolina Community Network** will develop a state-wide community advisory board (CAB) to provide guidance to cancer researchers at the state's three NCI-designated cancer centers. Trained in research ethics and the principles of the cancer clinical research process, CAB members will review Phase III clinical trial protocols for community relevance and feasibility.
- **Vanderbilt Ingram Cancer Center**, in collaboration with Meharry Medical College, the Nashville Latino Health Coalition, the Nashville Health Disparities Coalition, the Nashville Branch NAACP Health Committee, the Cervical Cancer Coalition and Tennessee State University, will conduct a series of town hall meetings to expand community awareness and foster participation of underrepresented groups in cancer clinical research. Through these meetings, the partners will identify community members for ongoing participation in research activities, including service on research advisory boards and institutional review boards.
- **Grand Rapids Clinical Oncology Program's** newly formed Patient Advisory Board – comprised of cancer survivors and volunteers with experience in clinical trials – will implement an innovative cancer clinical trial public awareness campaign for the medical community, allied

Health

Find out more about [membership benefits](#) and how you can [join CCPH today!](#)

Newsletter Co-Editors
Jessie Tobin
Alicia Witten

Contact us:
ccph@mcw.edu

©2009 Community-Campus
Partnerships for Health

Partnership Matters Newsletter

Submission Guidelines

We welcome announcements, comments and questions from you! Please forward them to the PM Editor at ccphpm@mcw.edu.

Submission Guidelines:

- Please limit announcements and questions to not more than 100 words. As for articles and editorials, not more than 200 words;
- Provide the names of all authors, their current institutional affiliations and/or photos;
- Explain all abbreviations and unusual terms when first used.

health professionals and the general public in Western Michigan.

• **The ACOSOG Patient Advocate Committee** will strengthen the community perspective in the national clinical trial development process by defining the roles and responsibilities of patient advocates serving on national cancer cooperative groups. Developed through a national survey, this standardized definition will enhance advocate recruitment, orientation and involvement throughout ACOSOG and other national cooperative groups.

• **Columbia St. Mary's Health System** will increase the number of underserved Hispanic and African-American patients on its cancer clinical trials by implementing targeted improvements in their informed consent process—such as staff cultural competency training and modification of consent forms and processes—to better address the needs of non-English speaking and low-literacy patients.

To read the full press release, visit:

http://depts.washington.edu/ccph/pdf_files/IP_press_release_2_10_09.pdf

For more information about *Communities as Partners*, please visit:

www.communitiesaspartners.org

PREVENTION RESEARCH CENTER DEVELOPS PARTNERSHIP TRUST TOOL

CCPH Organizational Member, the PRC National Community Committee, Plays Integral Role in Tool Development

The Center for Disease Control and Prevention Research Center (PRC) Partnership Trust Tool (PTT) is designed to engage PRC's academic, community, and public health practice partners in a dialogue about issues that foster and hinder trust. It allows partners to explore strengths, identify opportunities for improvement, and develop strategies for enhancing trust. Although the PTT helps partners describe trust in their relationships, it is not an assessment tool or scale for measuring trust. The PTT has two parts:

- 1) Survey: Participants complete an anonymous survey and rate their experiences and expectations of their partners behaviors related to various components of trust.
- 2) Facilitated Discussion: Partners meet for 4-6 hours and a facilitator leads them through a guided discussion based on survey results.

Why was the PTT developed? PRC partners identified trust as an important and feasible concept to address about their partnerships. Subsequently, trust was included in the PRC Program Logic Model as a motivating condition in the PRC research process. Although the success of a PRC may depend on its ability to develop and maintain partnerships built on trust, addressing such a sensitive issue with partners is challenging. The PTT helps PRC's spark dialogue and helps align partners perceptions about trust, which may help partners function together effectively to reach their ultimate goals of improving health and eliminating health inequalities.

How was the PTT developed? An external research team developed the tool by using information from focus groups and guidance from PRCs community, academic, public health partners, and PRC Program office staff. The PRC National Community Committee, an organizational member of CCPH, was instrumental in the tool's development. The PTT was pilot-tested with several PRCs to assess the tools components (survey and facilitated discussion), the efficiency of the process and activities, the effectiveness of the facilitator, and the instruction materials developed to help PRCs use the tool on their own.

Using the PTT is a partnership-building activity. Some key benefits include: 1) Involves all partners: community, academic, health department, or others; 2) Helps in planning evaluation activities that relate to partner relationships; 3) Helps partners identify sensitive issues related to trust and develop a plan for resolving concerns; 4) Helps PRCs document progress in developing partnerships based on trust.

For more information, visit: <http://www.cdc.gov/prc/about-prc-program/partnership-trust-tools.htm> or email the PRC Program Office at cdcinfo@cdc.gov.

For additional resources for building trust in community-campus partnerships, visit "Developing and Sustaining Community-Based Participatory Research Partnerships: A Skill-Building Curriculum" at www.cbprcurriculum.info

NEWS FROM CCPH

Six Universities Awarded Grants to Build Cadre of Community-Engaged Faculty

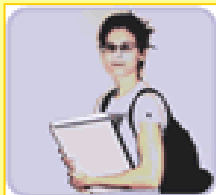


Faculty for the Engaged Campus is pleased to announce that it has made grants to six universities to design, implement and evaluate innovative faculty development programs that advance community-engaged scholarship. Each grant is for \$15,000 over a two year period. The funded institutions are North Carolina State University, Northwestern University, Ohio University, University of Michigan-Ann Arbor, University of Minnesota-Twin Cities and University of North Carolina at Chapel Hill. Brief descriptions of their programs appear below.

Faculty for the Engaged Campus, a national initiative of [Community-Campus Partnerships for Health](#) in partnership with the University of Minnesota and the University of North Carolina at Chapel Hill, aims to strengthen community-engaged career paths in the academy by developing innovative competency-based models of faculty development, facilitating peer review and dissemination of products of community-engaged scholarship, and supporting community-engaged faculty through the promotion and tenure process. The initiative is supported in part by a grant from the Fund for the Improvement of Postsecondary Education in the U.S. Department of Education.

For more information, visit the initiative homepage at <http://depts.washington.edu/ccph/faculty-engaged.html>

CCPH Student-Authored Conference Abstracts published in the Journal *Context*!



Context, the Journal of Health Students Taking Action Together shares in [CCPH's](#) goals and has partnered with CCPH in order to provide its readers with new and exciting research from the 2007 [CCPH conference](#). Abstracts that highlight student reflections on their community experiences are currently published online. To read these abstracts or learn more about *Context*, please visit: <http://contextjournal.org/category1.php>.

Apply Now for the CCPH 12th Summer Service-Learning Institute! Application Deadline: May 8, 2009



Apply now to attend the [CCPH 12th Summer Service-Learning Institute](#) held July 24-27, 2009, in the Cascade Mountains of Washington State! The Institute is designed for both new and experienced service-learning practitioners (faculty, staff and community partners). It is taught by national experts in service-learning, including health professional faculty and community leaders who have developed successful service-learning partnerships. A unique and effective component of the institute is a mentoring model in which participants work in small groups and as individuals with mentors (institute instructors) to further shape their own action plans for service-learning.

Application materials for the [CCPH 12th Summer Service-Learning Institute](#) are now available at: <http://depts.washington.edu/ccph/servicelearning.html>. Questions about the CCPH Summer Service-Learning Institute or the application process? Please e-mail sliccph@mcw.edu.

Special Limited Time Offer for the Journal *Progress in Community Health Partnerships* Available to CCPH Members!



One of **CCPH's** publishing partners; Johns Hopkins University Press has a special offer exclusive to **CCPH** members in subscription prices for a limited time only! Currently, **CCPH** members are eligible for a 20% discount on subscription prices to the JHUP Journal *Progress in Community Health Partnerships* as a benefit of **CCPH** Membership. However, for a limited time, JHUP would like to EXTEND this discount by offering issue 2.2 of *Progress in Community Health Partnerships* for FREE! **That's a 20% discount on the subscription and a FREE issue** (5 issues for the price of 4!).

To act NOW on this time-sensitive benefit, visit our publications discount page at: <http://depts.washington.edu/ccph/books.html#JohnsHopkins1>

Remember, this offer only applies to current **CCPH** members. Not yet a member? [Join today!](#)

MEMBERSHIP MATTERS

Are You Enjoying ALL of the Benefits CCPH Membership Offers?

Order a CCPH Publication with Your Member Discount Today!



CCPH offers numerous publications including toolkits, reports, case studies, and articles on Community-Based Participatory Research, service learning, community-engaged scholarship, partnership-building, and other topics of interest. **CCPH Members** receive substantial discounts on all CCPH publications, as well as on titles from partner publishers!

For more information, on member discounts for publications, visit: <http://depts.washington.edu/ccph/books.html>

To view and order all **CCPH** Publications, visit: <http://depts.washington.edu/ccph/guide.html>

Not Yet A Member? Join Today!

If you are interested in becoming a member of **CCPH** or need to renew your current membership, [join today!](#)
(See above for information on **CCPH Membership Rewards!**)

Having Trouble Accessing CCPH Members-Only Website?

If you did not receive or misplaced your password for accessing member-only pages on the **CCPH** website, contact **CCPH** at (414) 456-8191 or ccph@mcw.edu

Showcase Your Work! Be a CCPH Featured Member!

Let the world know about your partnership work! Email us ccph@mcw.edu for details. Read about the Current **CCPH** Featured Member Dr. Mark DeHaven at <http://www.ccphe.info>

To view past **CCPH** Featured Members, please visit: <http://depts.washington.edu/ccph/pastfeaturedmembers.html>

UPCOMING EVENTS

For details on these new listings and all previously listed upcoming events, visit
[CCPH's CONFERENCE PAGE](#)

February 2009

February 21-22, 2009 • National Council on Ethics in Human Research Conference • Ottawa, Ontario, Canada

The conference theme is "Transition: The Changing Landscape of Human Participant Protections in Canada." Two sessions will feature CCPH projects by presenter and **CCPH member Sherry Ann Chapman** of Community-University Partnership, Edmonton. Sherry Ann is a member of the CCPH workgroup that is developing a training curriculum for IRBs and REBs called "IRB/REB Curriculum on Ethical Considerations in Community-Engaged Research." To learn more about the IRB-REB Curriculum on Ethical Considerations in Community-Engaged Research, visit:

<http://depts.washington.edu/ccph/irbhome.html>

To learn more about the conference, visit: http://www.ncehr-cnerh.org/english/events/ncehr_events.php

February 22-24, 2009 • Association for the Accreditation of Human Research Protection Programs (AAHRPP) Annual Meeting • Los Angeles, CA

CCPH Senior Consultant Sarena Seifer will present "Enhancing Community Involvement in the IRB Review Process" along with Stacy Collins, coordinator of the Communities as Partners in Cancer Clinical Trials project and Eric Wat, Data Manager, Special Service for Groups. The presentation will highlight the following **CCPH** projects:

Communities as Partners in Cancer Clinical Trials

www.communitiesaspartners.org

Understanding Community-Based Processes for Research Ethics Review

<http://depts.washington.edu/ccph/researchprojects.html#CommBasedProcesses>

Community-Based Participatory Research & Research Ethics

<http://depts.washington.edu/ccph/irbhome.html>

More information on the AAHRPP Meeting is available at: <http://www.aahrpp.org>

April 2009

April 10, 2009 • Community-Based Participatory Research Workshop: Challenges and Solutions for Researchers and Community Leaders • Houston, TX

CCPH is cosponsoring this institute and we encourage your participation!

Sponsored by the Journal of Empirical Research on Human Research Ethics, the Center for Public Policy at University of Houston, and Community-Campus Partnerships for Health, this workshop will examine successful models and challenges to Community-Based Participatory Research (CBPR). **CCPH Board Member Susan Gust** and **Faculty for Engaged Campus Co-Director Cathy Jordan** will speak on a panel presentation about Models of Community Engagement.

For more information about the workshop, please visit: <http://www.uh.edu/cpp/cbprc.htm>

May 2009

May 18 & 19, 2009 • International Partnership Institute •
Portland, OR • Call for Proposals Deadline: March 9, 2009

CCPH is cosponsoring this institute and we encourage your participation!

Portland State University (PSU) is hosting an International Partnership Institute with the theme "Reciprocal Partnerships: Transforming Higher Education and Community for the Future." Developing and sustaining reciprocal partnerships is the basis for effective campus-community engagement. Yet, despite the W.K. Kellogg Foundation's (and others') national call to focus on partnerships a decade ago, this foundational work remains elusive for many campuses and communities. Join community and campus practitioners and scholars to deeply explore engaged teaching, research and service partnerships - their proven mechanisms and strategies for success, persistent challenges, and the scholarship of partnerships. Registration is \$200.

To view the Call for Proposals and registration information: www.pdx.edu/cae/partnership.html

To learn more about PSU's Partnership Initiative: <http://www.pdx.edu/cae/partnershipinitiative.html>

JULY 2009

July 24-27, 2009 • CCPH's 12th Summer Service-Learning Institute •
Leavenworth, WA • Application Deadline: May 8, 2009

Mark your calendars now for this intensive four-day Institute. The Institute is taught by national experts in service-learning, including health professional faculty and community leaders who have developed successful service-learning partnerships. A unique and effective component of the institute's is a mentoring model in which participants work in small groups and as individuals with mentors (institute instructors) to further shape their own action plans for service-learning.

Application materials are available now at: <http://depts.washington.edu/ccph/servicelearning.html>.

New Event Listings

For details on these new listings and all previously listed upcoming events, visit [CCPH's CONFERENCE PAGE](#)

April 1, 2009 • Society for Research in Child Development (SRCD) Civic Development Preconference • Denver, Colorado • <http://civicdevelopment.weebly.com>

April 3-5, 2009 • Transcending Global Health Barriers: Education & Action • University of Washington, Seattle, WA • www.globalhealthedu.org

April 23-26, 2009 • The Association of American Indian Physicians' 17th Annual Cross Cultural Medicine Workshop • Santa Fe, New Mexico • http://aaip.org/programs/cross_cultural/ccmw.htm

May 14, 2009 • OHRP Research Community Forum Reducing Regulatory Burden: Real Strategies for Real Change • Ann Arbor, MI • <http://www.research.umich.edu/hrpp/event.html>

May 20-22, 2009 • The Community College National Center for Community Engagement (CCNCE) "Unraveling the Mysteries behind Thriving Partnerships in Service Learning and Community Engagement" • Scottsdale, AZ • <http://www.mc.maricopa.edu/engagement/2009Conf/CallForProposals.shtml>

June 9, 2009 • 7th Annual National LGBTQ Tobacco Summit • Phoenix, AZ • <http://2009summit.googlepages.com>

June 16–19, 2009 • Forth International Conference on Education, Labor and Emancipation, "Manifesto for New Social Movements: Equity, Access, and Empowerment" • Salvador, Bahia, Brazil • <http://academics.utep.edu/confele>

August 3-4, 2009 • 2009 EPICS Conference on Service-Learning in Engineering and Computing • Austin, Texas • <https://engineering.purdue.edu/EPICSNational/News/2009AnnualConferenceonServiceLearninginEngineering>

August 23-25, 2009 • CityMatCH Urban MCH Leadership Conference: "Reinventing MCH Practice: Rising to the Challenge, Committing to the Future" • New Orleans, LA • http://www.citymatch.org/conf_index.php

September 2-4, 2009 • 10th Global Forum on Bioethics in Research, "Conflicts of Interests in Health Research" • Santiago, Chile • <http://www.globalforum2009.cl>.

Sept 10-12, 2009 • Human Development and Capability Association International Conference • Lima, Peru • <http://www.capabilityapproach.com/>

September 18, 2009 • 17th International IAP2 Conference: "Making Sustainable Decisions" • San Diego, CA • www.iap2.org

September 24-26, 2009 • 2009 International Conference on Residency Education (ICRE) • Victoria, British Columbia. • http://rcpsc.medical.org/meetings/submissions_e.php

September 28-29, 2009 • 10th National Outreach Scholarship Conference Pathways of Engagement: Connecting Civic Purpose to Learning and Research - Locally and Globally • The University of Georgia • <http://www.outreachscholarship.org>.

ANNOUNCEMENTS

The California Endowment Releases the Legacy Evaluation of the Partnership for the Public's Health Initiative

- The Legacy of Partnership presents findings from an evaluation conducted four years after funding ended and demonstrates what is possible when health departments and communities are able to work successfully together over a long period of time. The report features the PPH Initiative's legacies for community groups, health departments, communities and the state of California, as well as key lessons about sustaining community-based public health. Individual "Focus on Enduring Legacy" stories describe the successes of the partnerships studied for the evaluation. To view the report, visit: http://cche.org/conference/2008/publications/cche-publications_LegacyOfPartnership.pdf

Robert Wood Johnson Foundation Approves Second Round of Funding for Project Health Design - \$5.3M will support a program engaging four to six grantee teams to demonstrate how to improve people's health by enabling them to record, interpret and act on health information that emerges in the course of their daily living. An important component of the new project will be to demonstrate how these observations of daily living can be integrated into the clinical practice workflow, assisting patients and the clinicians to best manage chronic illness. RWJF expects to release the Call for Proposal in Spring, 2009. For more information, visit: <http://www.projecthealthdesign.org/home>

National Youth Leadership Council Webinar on Youth Voice and Leadership - NYLC will host a series of four online seminars linking service-learning practitioners from around the world with leading experts on youth voice, the history of service-learning, service-learning research, and service-learning curriculum. These hour-long sessions will feature presentations by a panel of experts, questions-and-answer exchanges, and dialogue. Sessions cost \$29 each. Participants may register for single sessions or for the entire series. To register, visit: <http://www.nylc.org/pages-bookstore#webinars>

Josiah Macy, Jr. Foundation Releases Report, "Revisiting the Medical School Educational Mission at a Time of Great Expansion" - The document is the result of an October 2008 conference. The report cites current medical school expansion as an "unparalleled opportunity" to examine existing medical school curricula and explore innovative ways to improve the education of the next generation of physicians. Among the report's recommendations: make increasing diversity a top priority; find ways to reduce the burden of medical school debt; reexamine the medical school admissions process; ensure that senior academic medicine leadership embrace and champion the change agenda; shift education of students to ambulatory sites where most care is provided; and train future physicians to be skillful in preventative as well as curative medicine. For more information, visit: <http://www.macyfoundation.org>

New Directory of American Medical Education – The Association of American Medical Colleges has just released the latest edition of the "Directory of American Medical Education, 2008-2009." Updated annually, this directory lists administrators, department and division chairs for all the accredited medical schools in the United States, Canada and Puerto Rico. In addition to listing key faculty members, the entry for each medical school also contains information on enrollment, public/private support, clinical facilities and a brief historical statement. The directory also describes the AAMC's activities and efforts in research, communications, education and member services. Officers and members of the various AAMC groups and councils are also listed, including member academic societies and teaching hospitals. For more information, visit: <http://www.aamc.org/publications/dame>

New National Clearinghouse for Health Workforce Information Launched - The U.S. Department of Health and Human Services' Health Resources and Services Administration has launched an online repository of information and resources about the healthcare workforce. The Health Workforce Information Center, operated by the University of North Dakota School of Medicine and Health Sciences, provides clinicians, educators, researchers, and policymakers with the latest information on: health workforce programs and funding sources; workforce data, research, and policy; educational opportunities and models; and news and events. The Web site is intended to quickly provide decision-makers with the tools necessary to make tough choices and allocate resources in the face of a national shortage of physicians and other health care workers. The Health Workforce Information Center includes AAMC data and resources on the physician workforce. For more information, visit: <http://www.healthworkforceinfo.org>

Global PACT International Offers International Service-Learning and Leadership Training Experiences for Students - Global PACT recognizes the importance and value of an international service-learning and leadership training experience for students. Our mission is to build a network of individuals able to identify and solve problems in their communities. Scholarships are available for each program. For more information on these programs, please visit our website at <http://www.globalpact.org>

CDC Guide to Community Preventive Services Available - The Guide to Community Preventive Services serves as a filter for scientific literature on specific health problems that can be large, inconsistent, uneven in quality, and even inaccessible. The Community Guide summarizes what is known about the effectiveness, economic efficiency, and feasibility of interventions to promote community health and prevent disease. The Task Force on Community Preventive Services makes recommendations for the use of various interventions based on the evidence gathered in the rigorous and systematic scientific reviews of published studies conducted by the review teams of the Community Guide. Please visit: <http://www.thecommunityguide.org/about/default.htm> **Population-Based Efforts to End the Cycle of**

Abuse and Violence in Our Communities Available Online – The **Winter 2009** issue of Northwest Bulletin of Family and Child Health explores innovative efforts to address intimate partner violence in the Northwest and Alaska. In order to end the cycle of intimate partner violence and address its devastating effects, a full spectrum of prevention strategies—primary through tertiary—must be adopted. Articles in this issue highlight projects for adolescent dating violence prevention (primary prevention), early identification through screening for intimate partner violence in health care settings (secondary prevention), and systems-level, coordinated community efforts to better serve children and their families (tertiary prevention) To view this issue, visit: <http://depts.washington.edu/nwbfch/>

Website Provides Access to Health Workforce Information - The Health Workforce Information Center Web site provides information on health work force solutions to help health professionals, educators, researchers, and policymakers around the nation develop strategies to meet future work force demands. The Web site, operated by the University of North Dakota School of Medicine and Health Sciences with support from the Health Resources and Services Administration, features events and training, organizations, funding, news and updates, state resources, and topics and professions. Visitors can also receive customized assistance, subscribe to a monthly e-newsletter, or suggest resources to appear on the Web site. The Web site is available at <http://www.healthworkforceinfo.org>.

Brief Features Recommendations for Shaping School Nutrition Policy - Improving Child Nutrition: Insights from the National USDA Study of School Food Environments provides recommendations for policymakers on supporting healthy changes to the school food environment as a way of improving children's diets and overall health. The policy brief, published by the Robert Wood Johnson Foundation, is based on a comprehensive analysis of data from the third School Nutrition Dietary Assessment Study (SNDA-III) and other studies using SNDA-III data. SNDA-III includes data from the 2004-2005 school year on the food and nutrient content of meals offered to and selected by children, children's dietary behaviors at school and outside of school, and the availability and consumption of competitive foods. Please visit: <http://www.rwjf.org/files/research/20090102sndapolicybrief.pdf>.

EMPLOYMENT OPPORTUNITIES

NEW Director of Service-Learning – Youth Service America - The goal of the Director of Service-Learning is to increase the public's understanding and adoption of service-learning principles, youth development concepts, and civic engagement approaches as effective strategies for children and youths' engagement. With a solid foundation in the latest research, this position will create and oversee the development of educational materials, trainings, grants and incentives, and manage evaluation strategies to assess their impact. The Director will provide service-learning and youth development expertise to grant recipients, students, teachers, administrators, practitioners, policy makers, funders, and other constituents interested in starting or expanding their service-learning and youth engagement programs. To see the full position description, visit: <http://www.idealists.org/if/i/en/av/Job/325768-171/c>

NEW Director of New MPH Program Emphasizing Community Research – Yeshiva University - We seek a dynamic and experienced public health educator to plan and direct a new MPH program at the Institute for Public Health Sciences (IPHS) of Yeshiva University (YU) in New York City. The IPHS and the MPH program are jointly sponsored by the Albert Einstein College of Medicine and Ferkauf Graduate School of Psychology. We emphasize hands-on experience in community-based research for all trainees, and a scholarly focus on behavioral issues in public health, global health, prevention, and health disparities. The Director must have a doctoral degree in public health or a clinical doctorate and an MPH (or equivalent) degree, and should have experience and accomplishments in education, interdisciplinary and collaborative program development, mentorship, and research. Creating this innovative, cross-cutting program will require outstanding leadership and interpersonal skills. Deadline for applications: March 15, 2009 For more information, visit: <http://www.yu.edu/iphs/> or email Merrilly Calabrese, Administrator, at: calabres@aecom.yu.edu

GRANTS ALERT!

Listed below are **NEW** announcements only. To view all previously listed grant alerts, please visit [CCPH's FUNDING OPPORTUNITIES PAGE](#)

NEW First Nations Development Institute: Native Youth and Culture Fund - Deadline: February 27, 2009 - First Nation's Native Youth and Culture Fund supports projects that incorporate culture and tradition to address social issues such as drug and alcohol abuse, teen pregnancy, mental health, etc. Funded projects should focus on one or more of the following priority areas: preserving cultural and/or spiritual practices, beliefs, and values; engaging both youth and elders in activities that demonstrate methods for documenting traditional knowledge, practices, and/or beliefs; increasing youth's capacity to lead through integrated educational or mentoring programs; and increasing access to cultural customs and beliefs through the use of appropriate technologies as a means of preserving tribal language, arts, history, or other culturally relevant topics. Instructions for developing letters of interest are available at: http://www.firstnations.org/default2.asp?active_page_id=250&top=75

NEW RWJF Active living Research Grant - Deadline: April 28, 2009 - *Active Living Research* supports research to inform policy and environmental strategies for increasing physical activity among children and adolescents, decreasing their sedentary behaviors and preventing obesity. A special emphasis is placed on research focused on racial/ethnic populations and children living in low-income communities who are at highest risk for obesity. Approximately \$3.3 million is available in this round of funding for research grants as well as Dissertation Awards. Proposed studies must address one of five selected topics areas. Detailed descriptions for each topic are provided in the complete call for proposals at: <http://www.rwjf.org/applications/solicited/cfp.jsp?ID=20641>

NEW Drug Free Communities Mentoring Program – Deadline: April 24, 2009 - The purpose of the DFC Mentoring Program is to provide grant funds to existing DFC grantees so that they may serve as Mentors to newly-formed and/or developing coalitions that have never received a DFC grant. Mentor grant funds should be used for the direct benefit of the Mentee Community/Coalition. Through the support of DFC mentoring funds, Mentor Coalitions are expected to share their expertise with non-grantee coalitions (Mentee Community/Coalition) and enable them to successfully compete for a DFC grant. Funding through this grant should support access for the Mentee Community/Coalition to the training and technical assistance necessary to help them form a community coalition and pursue a DFC grant. It is the intent of the DFC Mentoring Program that communities mentored through this effort will form functioning coalitions working to reduce youth drug use at the community level, and that those coalitions should meet the basic eligibility criteria of the DFC program and be able to address the two primary goals of DFC listed below. For more information, please visit: http://www.samhsa.gov/grants/2009/sp_09_003.aspx

AWARDS, FELLOWSHIPS & SCHOLARSHIPS

Listed below are **NEW** announcements only. To view all previously listed announcements, please visit [CCPH's AWARDS, FELLOWSHIPS, & SCHOLARSHIPS PAGE](#)

NEW World Summit Youth Award 2009 - Putting MDGs into Action - Deadline: February 28, 2009 - The World Summit Youth Award (WSYA) is the global contest for online or mobile initiatives to raise awareness and help resolve the most pressing global issues. If you rely on the web for creating culture, overcoming gender inequality, lack of education and access to clean water or to address hunger, poverty, disease and environmental degradation, then you should take part! The World Summit Youth Award showcases you as young developers and serves as a platform for people from all UN member states to work together on the efforts of reaching the Millennium Development Goals! The rewards are global recognition within the United Nations, invitations to the WSYA Winners events in Mexico and networking contacts on a global scale. The application form is available online at <http://www.youthaward.org>

NEW Gary Stewart Scholarship for Research in Public Health – Deadline: March 20, 2009 - The Stewart Scholarship supports educational research projects of graduate students in public health and includes a research award of \$2,500, a one-year membership to ARHP, and paid registration and travel to Reproductive Health 2009. Complete information is available at www.ReproductiveHealth2009.org

NEW Health and Aging Policy Fellows Program – Deadline: April 15, 2009 - This national program seeks to provide professionals in health and aging with the experience and skills necessary to make a positive contribution to the development and implementation of health policies that affect older Americans. The program offers two different tracks for individual placement: (1) a residential track that includes a nine-to-12-month placement in Washington, D.C. (as a legislative assistant in Congress, a professional staff member in an executive agency or in a policy organization) or at a state agency; and (2) a non-residential track that includes a health policy project and brief placement(s) throughout the year at relevant sites. Core program components focused on career development and professional enrichment are provided for fellows in both tracks. The program is open to physicians, nurses and social workers at all career stages (early, mid, and late) with a demonstrated commitment to health and aging issues and a desire to be involved in health policy at the federal, state or local level. For further information, please visit our website at www.healthandagingpolicy.org

NEW Call for Nominations for Herbert W. Nickens Awards – Deadline: May 1, 2009 - The Association of American Medical Colleges is soliciting nominations for the annual Herbert W. Nickens Award. The Herbert W. Nickens Award is given to an individual who has made outstanding contributions to efforts that promote justice in medical education and provide equal health care for all Americans. The recipient will receive a \$10,000 award and present the Nickens Lecture at the AAMC's 2009 Annual Meeting in Boston. Nominees may come from the fields of medicine, education, law, nursing, public health, or social sciences. To learn more, visit: <http://www.aamc.org/about/awards>

NEW Call for Nominations for the Herbert W. Nickens Faculty Fellowship – Deadline: May 1, 2009 - The Association of American Medical Colleges recognizes an outstanding junior faculty member, committed to a career in academic medicine, who has demonstrated leadership in addressing inequities in medical education and health care. The fellowship recipient will receive a \$15,000 grant to support his or her academic and professional activities over a two-year period. To learn more, visit: <http://www.aamc.org/about/awards>

NEW Call for Nominations for The Herbert W. Nickens Medical Student Scholarships – Deadline: May 1, 2009 - The Association of American Medical Colleges awards five outstanding students entering their third year of medical school who have demonstrated leadership in addressing the educational, societal, and health care needs of minorities. Each recipient will receive a \$5,000 scholarship. To learn more, visit: <http://www.aamc.org/about/awards>

NEW Paid NARCH American Indian or Alaska Native Summer Graduate Student Internship – Deadline: Open - The Northwest Portland Area Indian Health Board is seeking three graduate student interns who are pursuing health related research careers. Depending on education, salary ranges from \$12.50 to \$18.50/hour. The summer interns are full-time, temporary Northwest Portland Area Indian Health Board (NPAIHB) employees--not eligible for annual, sick, or vacation leave, or other board fringe benefits. They are paid for time worked and begin around the first part of June for two months. They are strongly encouraged to attend the Summer Research Training Institute for American Indians and Alaska Natives which is here in Portland from June 15-July 2, 2009. Additionally, they work on a health research project during the summer and submit a report at the end of their employment. For more information, contact: Luella Azule, (Yakama Nation/Umatilla), Project Coordinator, Northwest Native American Research Center for Health at lazule@npaihb.org or 503-228-4185 x 275.

CALLS FOR PAPERS & PRESENTATIONS

Listed below are **NEW** announcements only. To view all previously listed announcements, please visit [CCPH's CALLS FOR PAPERS & PRESENTATIONS PAGE](#)

NEW Reproductive Health 2009 Call for Abstracts – Deadline: February 27, 2009 - Abstracts are now being accepted for scientific oral and/or poster presentations. We welcome a diverse array of abstract submissions that reflect our broad definition of reproductive health including, but not limited to, issues related to pregnancy, infertility, abortion, contraception, healthy sexuality throughout the lifespan, sexual education, and environmental impacts on reproductive systems. All accepted abstracts will be published in the August 2009 issue of the Contraception Journal. Reproductive Health 2009 will be held September 30 - October 3 in Los Angeles, CA. This is the annual meeting of the Association of Reproductive Health Professionals (ARHP), the Planned Parenthood Federation of America National Medical Committee (NMC), and the Society of Family Planning (SFP). Please visit: <http://www.reproductivehealth2009.org/>

NEW 2009 International Conference on Residency Education Call for Proposals and Abstracts – Deadline: February 27 and March 27, 2009 (See below) – The International Conference on Residency Education will be held September 24-26, 2009 in Victoria, British Columbia. Workshop proposals are due February 27, 2009. Abstracts are due March 27, 2009. Topics may include: Teaching and learning in residency education; Competency-based residency education; Resident assessment: cutting edge tools and practical techniques; Clinician educators: careers and competencies; Health policy for postgraduate medical education (PGME); International medical graduates (IMGs): navigating through a changing landscape; Challenges and innovations in international PGME; What works? Ideas in residency teaching and assessment; Research in residency education; and Simulation (includes education, patient safety, novel integrations of technology, and organization and administration). For more information, visit: http://rcpsc.medical.org/meetings/submissions_e.php

NEW CityMatch Conference 2009 Call for Abstracts – Opens March 2nd, 2009 - The 19th Annual CityMatCH Urban MCH Leadership Conference's theme is "Reinventing MCH Practice: Rising to the Challenge, Committing to the Future." The conference will be held August 23-25 in New Orleans, LA. Abstract submissions have two format options: 1) Data Focus: For the presentation of scientific research, study findings, data analysis, or evaluation outcomes; 2) Program / Policy Focus: For description of programs or other MCH activities including descriptions of community based programs, discussions of MCH policy or ethics, and models for program evaluation, dissemination and capacity development. An Abstract Coaching conference call will be held Thursday, March 12th at 2 pm Eastern. For more information, please visit: <http://www.citymatch.org/abstract.php>

NEW The Community College National Center for Community Engagement (CCNCCE) – Deadline: March 9, 2009 – CCNCCE invites proposals for the 18th annual conference, Unraveling the Mysteries behind Thriving Partnerships in Service Learning and Community Engagement, which will be held on May 20-22, 2009, in sunny Scottsdale, AZ. Conference presentations are 1-hour or 90-minute sessions, which should be designed to be highly interactive. Proposals to present at the conference must be submitted in electronic form. For complete information, please visit: <http://www.mc.maricopa.edu/engagement/2009Conf/CallForProposals.shtml>

NEW Fourth International Conference on Education, Labor and Emancipation Call for Proposals– Deadline: March 15, 2009 - This year's theme is Manifesto for New Social Movements: Equity, Access, and Empowerment. It will be held in Salvador, Bahia, Brazil on June 16th - 19th, 2009. Scholars, teachers, students and activists from various fields and countries will convene in Salvador, Bahia (Brazil) to compare theoretical perspectives, share pedagogical experiences, and work toward developing a global movement for social justice in and through education. We invite proposals from the following perspectives: indigenous, feminist, postcolonial, Marxist/neomaxist, queer theory, critiques of neoliberalism /globalization, CRT, liberation theology, anthropology, comparative/international education, etc. For more information, visit <http://academics.utep.edu/confele>

NEW 10th Global Forum on Bioethics in Research Call for Applications – Deadline: April 1, 2009 - The conference theme is Conflicts of Interests in Health Research. It will be held September 2-4, 2009 in Santiago, Chile. The focus of the conference is to: 1) Provide an inclusive forum for sharing and discussing ethical considerations and experiences related to conflicts of interests; 2) Explore new ways of interpreting the conflict of interest phenomenon, challenging the accepted taxonomy and the current remedies to deal with conflicts of interests; 3) Analyze different settings in which conflicts of interest occur, going beyond financial conflicts of interests faced by clinical researchers. The official language will be Spanish. There will be simultaneous translation of the plenary sessions into English and break-out sessions in both Spanish and English. Details on how to apply to attend are available on the website: <http://www.globalforum2009.cl>.

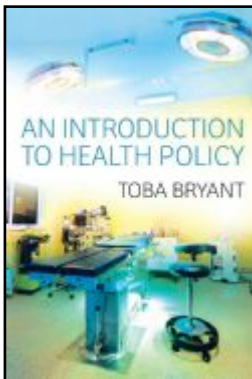
NEW **The Journal of Consumer Affairs Call for Papers for a Special Issue on: Public Health Issues Influenced by Consumer Choice – Deadline: June 1, 2009** - Consumer choices are directly related to public health. Chronic disease risk stems from energy over-consumption and sedentary lifestyles, key factors in the epidemic of obesity and related chronic diseases such as diabetes, cardiovascular disease, hypertension, and stroke. Other health threats include sub-standard housing, poor air quality, and exposure to environmental toxins. The urban built environment is linked to social factors, including poverty, racial segregation, and economic isolation. In short, consumers often have limited choices due to their physical and social environment, and these limited choices often impact their health. Therefore, manuscripts are being solicited for the 2010 issue of The Journal of Consumer Affairs devoted to the theoretical and practical knowledge of how consumers obtain, process, and utilize health information in the context of their social and physical environment. We seek contributions from multiple disciplines including public health, communications, consumer education, public policy, psychology and marketing. Authors may submit empirical studies or conceptual work. Papers that are theoretically grounded and also contain significant implications for consumer welfare are especially appropriate. Please follow the submission guidelines for The Journal of Consumer Affairs as detailed under "JCA Author Guidelines" on the Blackwell Publishing web site at: <http://www.blackwellpublishing.com/submit.asp?ref=3D0022-0078>

NEW **Call for Papers on Participatory Health Research Nursing Inquiry: Interdisciplinary Perspectives on Policy and Healthcare - Deadline: October 1, 2009** - A special upcoming issue of Nursing Inquiry will be devoted to participatory health research. Submissions are invited that address conceptual, methodological, and pragmatic dimensions of participatory forms of health research. The goal of this special issue is to advance a better understanding of participatory health research across different disciplines and audiences (e.g. educators, students, health practitioners, policy makers, and researchers). Nursing Inquiry is an international peer-reviewed journal. All submissions should be made online at: <http://mc.manuscriptcentral.com/nin>.

NEW **16th Annual Canadian Conference on International Health Call for Abstracts – Deadline: Open** – The 2009 Conference theme is "Health Equity: Our Global Responsibility. It will be held October 25-28, 2009 in Ottawa Ontario, Canada. The Conference will examine inequities of health status, and the impact on the health of marginalized, vulnerable and Indigenous populations of changing environments, whether these changes are due to climate, technology, the economy or threats to human security. Presentations exploring lessons learned and new ways of understanding health equity and social justice locally, nationally and globally are invited. For more information, visit: <http://www.csih.org/en/ccih/index.asp>

PUBLICATIONS

CCPH Members receive discounts on publications by [Wiley/Jossey-Bass Publishers](#), [Johns Hopkins University Press](#), [West Virginia University Press](#), [Fieldstone Alliance](#), and [Community-Campus Partnerships for Health](#)



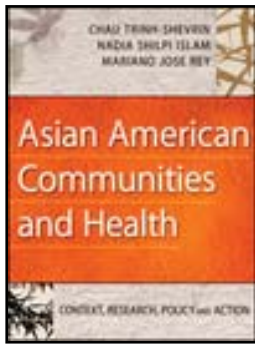
An Introduction to Health Policy

By Toba Bryant

With a strong comparative and international element, this engaging book analyses the process, implementation, and outcomes of health policy in Canada. The author critically compares Canadian health policy to other systems such as the United States, Sweden, the UK, and Cuba. Case studies include the capacity of various health systems to respond to natural disasters such as Hurricane Katrina in New Orleans in 2005. Of interest to a variety of disciplines including nursing, social work, health sciences, medical, and health policy, it is written for those who are studying or working in the health sector.

Toba Bryant is a co-editor of *Staying Alive: Critical Perspectives on Health, Illness, and Health Care* as well as a contributor in *Social Determinants of Health: Canadian Perspectives*. She is Assistant Professor of Sociology at York University and an Associate of the Centre for Urban and Community Studies at the University of Toronto.

Ordering Information: <http://tinyurl.com/deq26y>



Asian American Communities and Health: Context, Research, Policy, and Action

By Chau Trinh-Shevrin (ed.), Nadia Shilpi Islam (ed.), Mariano Jose Rey (ed.)

This ground-breaking textbook examines Asian American health from a public health perspective. It provides an overview of the social, political, economic, and cultural forces that influence the distribution of disease and illness in Asian American communities. The book explores the diversity within the Asian community with respect to health seeking behavior and knowledge, socioeconomic status, educational level, cultural traditions, and specific health care needs and issues. By examining the contextual factors that impact health, the book seeks to facilitate a meaningful dialogue and identify creative solutions for health disparities faced by racial and ethnic minority communities. It includes a focus on Community-Based Participatory Research as a foundation for action.

CCPH members receive a **15% discount** when ordering this publication and all **Jossey-Bass Publications** from the **CCPH** website!

Ordering information: <http://depts.washington.edu/ccph/books.html>

NEW AND RENEWING MEMBERS

January/February 2009

Please Join Us in Welcoming These New and Renewing CCPH Members

E-Individuals

Dunn, Jody, Family Care Partnership, Studio City, CA
Gemmel, Larry, Canadian Alliance for Community Service Learning, Ottawa, Ontario, Canada
LaRouche, Kathey, The Health Councils, Inc., St. Petersburg, FL
Thomas, Huw, University of Alabama at Birmingham, Birmingham, AL

Student Memberships

Wagner Schuman, Melissa, Medical College of Wisconsin, Milwaukee, WI

Individual Membership

Cowart, Luvenia, Syracuse University, Syracuse, NY
Foster-Spates, Tanika, Murrieta, CA

Organizational Memberships

Center for Medical Humanities and Ethics, San Antonio, TX

Berggren, Ruth
Stone, Melanie

Neumann College, Aston, PA

May, Karen

Ostendorf, Wendy

Thompson, Donna

Wollman, Catherine

Our Lady of Lourdes, Camden and Collingworth, NJ

Markey, Alice

Miller, Staton

Weber, Jane

University of Texas Health Science Center – San Antonio, San Antonio, TX

Cantu, Adelita

Lozano-Peneda, Juanita

[return to top](#)