

UWTV

Reinventing Research for Surgery and Intervention

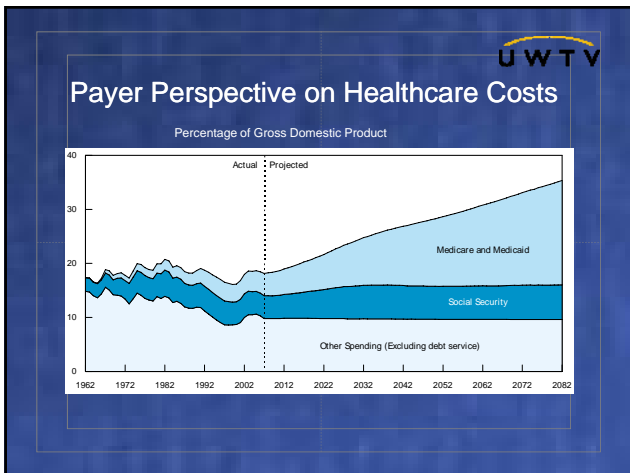
UW Centers for Comparative and System Effectiveness-CHASE Alliance

Sean D. Sullivan, PhD
Professor, Health Services
University of Washington

UWTV

Outline

- Rationale for CE Research
- How the NW is poised to address CE
- UW and the opportunity for collaboration
- CHASE Alliance
- Expectations for the CHASE Alliance



UWTV

What Drives Healthcare Costs?

	Smith, Heffler, and Freeland (2000)	Cutler (1995)	Newhouse (1992)
Aging of the Population	2	2	2
Changes in Third-Party Payment	10	13	10
Personal Income Growth	11-18	5	<23
Prices in the Health Care Sector	11-22	19	Not Estimated
Administrative Costs	3-10	13	Not Estimated
Defensive Medicine and Supplier-Induced Demand	0	Not Estimated	0
Technology-Related Changes in Medical Practice	38-62	49	>65

UWTV

Comparative Effectiveness

- “conduct and synthesis of systematic research comparing different interventions and strategies to prevent, diagnose, treat and monitor health conditions”
- “inform patients, providers, and decision-makers about which interventions are most effective”
- Improving health care delivery is the “goal of this research”

AHRQ website 2009

UWTV

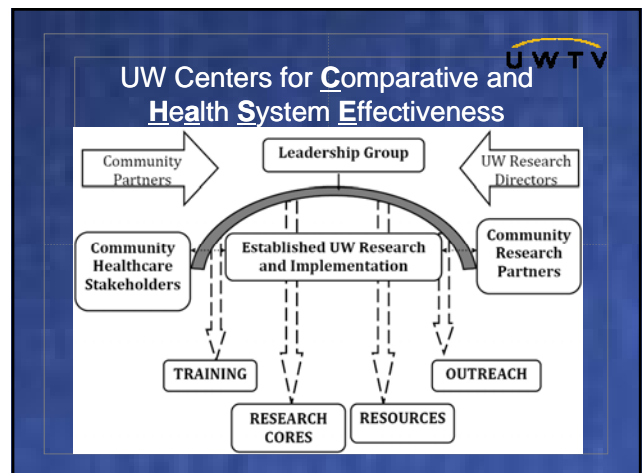
Northwest Region and CE


- Long track record in clinical trials
- “Show me” perspective of health services research
- History of engagement with payers and state
- GHC
- UW experience
 - Many players
 - Multi-disciplined
 - Strong collaborations
 - Strength in system evaluation and change research

UWTV

Growth Opportunity


- Opportunity to link investigators from across the CE spectrum
- Include researchers who focus on system effectiveness and change
 - Build on strengths of individual groups
 - Build economies of scale
 - Build more effective CE and system change research



UW Centers for Comparative and Health System Effectiveness 


Established UW Research and Implementation

CECORC, SORCE, PORPP, SeaQoL, HIPRC, Investigators and Centers from Schools of Medicine, Public Health, Public Policy, Nursing, and Social Work

UW Centers for Comparative and Health System Effectiveness 


Community Healthcare Stakeholders

- Public and Private Payers
- WA State Health Plans

UW Centers for Comparative and Health System Effectiveness 

Community Research Partners

- FHCRC
- GHRI
- VA HSR&D

UW Centers for Comparative and Health System Effectiveness 

TRAINING

Cross connectivity for graduate students and post-doctoral and fellowship trainees across centers maximizing trainee experience and productivity

- Internships
- Pre-doctoral
- K, T and F awards

UWTV

UW Centers for Comparative and
Health System Effectiveness

RESEARCH CORES

Connecting researchers across centers with
shared interests in:

- Comparative Effectiveness
- Health Disparities
- Health System Evaluation
- Technology Assessment
- Patient Centered Outcomes
- Economic Evaluation

UWTV

UW Centers for Comparative and
Health System Effectiveness

RESOURCES

Creating a community of engaged researchers
and fostering collaborations

- Analyst e-core
- Dataset share
- Journal clubs
- Conference Series

UWTV

UW Centers for Comparative and
Health System Effectiveness

OUTREACH

Engaging healthcare stakeholder communities
to elevate discourse around health system
improvement

- Public seminars
- Training for public and private sector
- Social Marketing expertise

UWTV

Expectations for UW CHASE

- Improved competitiveness for CE research
- Stronger multi-disciplinary CE research
- Higher impact research
- Higher quality training
- Better community engagement and interactions

Implications for Surgical Research

- Facilitates multi-disciplinary research and training in surgery
- Less of a silo effect
- More integration of health care utilization, QoL and functional status in surgical research
- More system change research in surgery
- Higher impact work-research that matters

For more information:
CHASE.All@UW.edu 