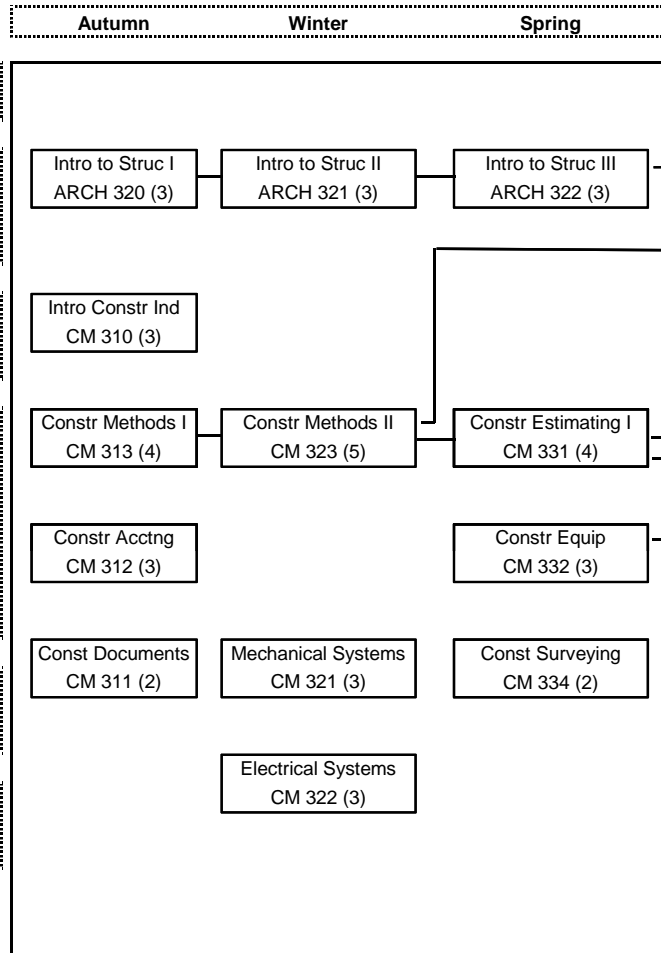


# COURSE PRECEDENCE DIAGRAM FOR PROFESSIONAL CURRICULUM BACHELOR OF SCIENCE IN CONSTRUCTION MANAGEMENT

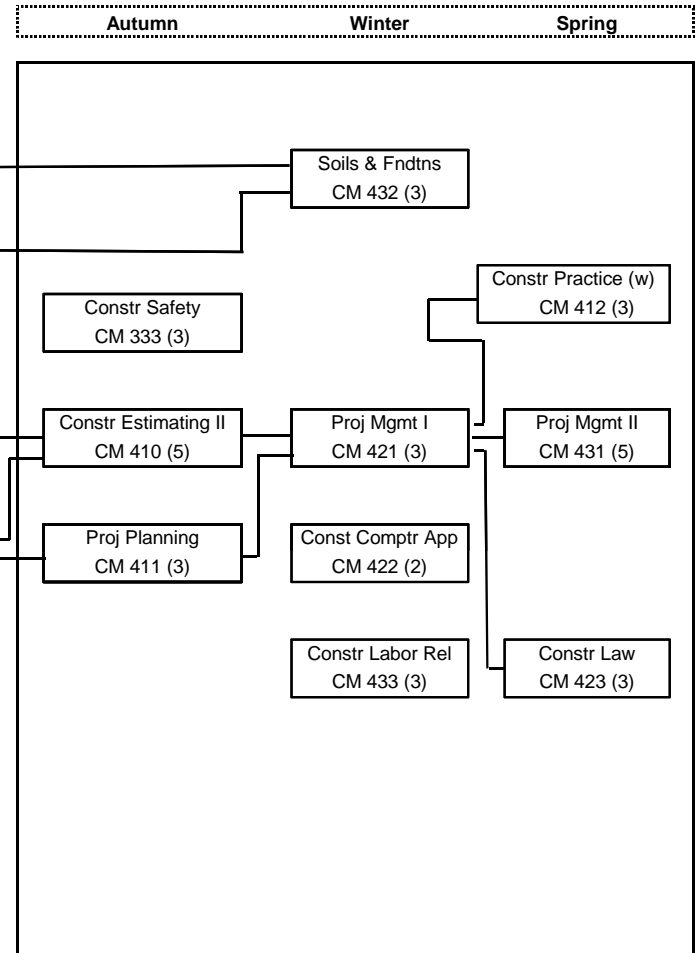
## FRESHMAN & SOPHOMORE CURRICULUM

|  |      |
|--|------|
| <b>CONSTRUCTION SCIENCES</b>   |      |
| Intro to Visualization and Computer Aided-Design ME 123                              | (4)  |
| <b>BUSINESS &amp; MANAGEMENT</b>   |      |
| Introduction to Law MGMT 200   | (5)  |
| Introduction to Accounting & Financial Reporting ACCTG. 215                          | (5)  |
| Fundamentals of Managerial Accounting ACCTG 225                                      | (5)  |
| <b>INDIVIDUALS &amp; SOCIETIES (I &amp; S)</b>                                       |      |
| Principles of Economics ECON 100, 200 or 201   | (5)  |
| Other I & S (CM 250 recommended)   | (10) |
| <b>MATH &amp; NATURAL WORLD (NW)</b>   |      |
| General Physics I PHYS 114 & 117   | (5)  |
| General Physics II PHYS 115 & 118  | (5)  |
| Application of Calculus to Business & Economics MATH 112 or 124, or 145 or Q SCI 291 | (5)  |
| Introduction to Geological Science ESS 101   | (5)  |
| Introduction to Statistical Methods QMETH 201  | (4)  |
| Other NW (Chemistry 120 or ENV S recommended)  | (10) |
| <b>LANGUAGE SKILLS *</b>   |      |
| English Composition ENGLxxx (from UW English Comp list)                              | (5)  |
| "W" Courses  | (5)  |
| <b>VISUAL LITERARY AND PERFORMING ARTS (VLPA)</b>                                    |      |
| Introduction to Public Speaking COM 220  | (5)  |
| Other VLPA   | (5)  |

## JUNIOR YEAR CURRICULUM



## SENIOR YEAR CURRICULUM



U  
P  
P  
E  
R  
D  
I  
V  
I  
S  
I  
O  
N  
C  
O  
U  
R  
S  
E  
S

MINIMUM LOWER DIVISION CREDITS: 88

MINIMUM UPPER DIVISION CREDITS: 92

MINIMUM TOTAL CREDITS: 180

**All students must take 6 additional credits of approved Construction/Construction Science Courses, BCMU 301 or CM 301, and 8 credits of approved Electives.**

**\*UW requires a minimum of 12 credits of Engl Comp or 5 credits of Engl Comp and 7 credits of "W" courses.**