

## Table of Contents

From the Director . . . . .	1
Class Schedule. . . . .	2
Class Descriptions . . . . .	3-4
New Data Sets . . . . .	5
ICPSR Summer Training . . . . .	6-7

## Spring Hours

*Computer Rooms* (135, 137, 139, 141, 143)  
Monday through Thursday: 8:00AM—9:00PM  
Friday: 8:00AM—5:00PM  
We are closed on Saturday and Sunday.

*Administrative Office*  
Monday through Friday: 8:00AM—NOON  
1:00PM—5:00PM

*Archivist*  
Monday through Friday: 8:00AM—5:00PM

## Consultants

Yen-Sheng Chiang, Sociology  
Chris Fowler, Geography  
Gregg Harbaugh, Education  
Jinyoung Kim, Political Science  
Nicole Matsunaga, Social Work  
Sean Power, Public Affairs  
John Rigg, Psychology,  
Chris Rothschild, Jackson School  
Marcos Torres, Communication  
Nalina Varanasi, Economics

## Administrative Staff

Fred Nick, Director  
Tina Tian, Archivist  
Markus Tsai, LAN Manager  
Kathy Davis, Fiscal Specialist  
Dixielynn Gleason, WP/DP Consultant  
Deborah Lee, Office Assistant

## Addresses

Center for Social Science  
Computation & Research  
University of Washington  
145 Savery Hall - Box 353345  
Seattle, Washington 98195 U.S.A.  
(206) 543-8110  
INTERNET: [csscr@u.washington.edu](mailto:csscr@u.washington.edu)  
WWW: <http://julius.csscr.washington.edu/>

## From the Director

As I walked into the office this morning, the sun was shining, the cherry trees were spectacular and birds were singing gloriously. We are so fortunate to work on such a remarkable campus. Well, back to more mundane issues.

Several spring quarter classes use real data for their final assignments which means Tina Tian, our Data Archivist, is going to be very busy all quarter. If you are planning to use data extensively this quarter make sure to give yourself lots of time so that you can fit into Tina's queue.

Room reservations continue to be constrained, so again, please plan ahead and reserve your classroom space early. Have a marvelous quarter.

Fred Nick



# CSSCR Spring 2006 Classes

Here are the ways you can sign up for classes: Call 543-8110; stop by 145 Savery during office hours; send e-mail to [ascocarp@u.washington.edu](mailto:ascocarp@u.washington.edu), including the class you wish to take, your name and department; or sign yourself up on our Web page.

<http://julius.csscr.washington.edu/>

## **Introduction to Atlas.ti**

Instructor: Marcos Torres  
Date: Monday, April 24  
Time: 2:00PM to 3:00PM  
Place: Savery 149

## **Introduction to Stata**

Instructor: Nalina Varanasi  
Date: Tuesday, April 25  
Time: 10:00AM to 11:00AM  
Place: Savery 137

## **Introduction to Photoshop**

Instructor: John Rigg  
Date: Friday, April 28  
Time: 8:00AM to 10:00AM  
Place: Savery 149

## **Introduction to ArcMap**

Instructor: Chris Fowler  
Date: Friday, April 28  
Time: 1:30PM to 3:00PM  
Place: Savery 149

## **Introduction to R(rrrr)**

Instructor: JinYoung Kim  
Date: Friday, May 5  
Time: 11:30AM to 12:30PM  
Place: Savery 137

## **Intermediate Powerpoint**

Instructor: Chris Rothschild  
Date: Friday, May 5  
Time: 1:30PM TO 2:30PM  
Place: Savery 135

## **Introduction to Excel**

Instructor: Nicole Matsunaga  
Date: Friday, May 5  
Time: 2:00PM to 3:00PM  
Place: Savery 137

## **Dissertation Formatting**

Instructor: Dixielynn Gleason  
Date: Tuesday, May 9  
Time: 8:30am to 9:30am  
Place: Savery 149

## **Introduction to the CSSCR Archive, Campus**

### **Data and Census Data**

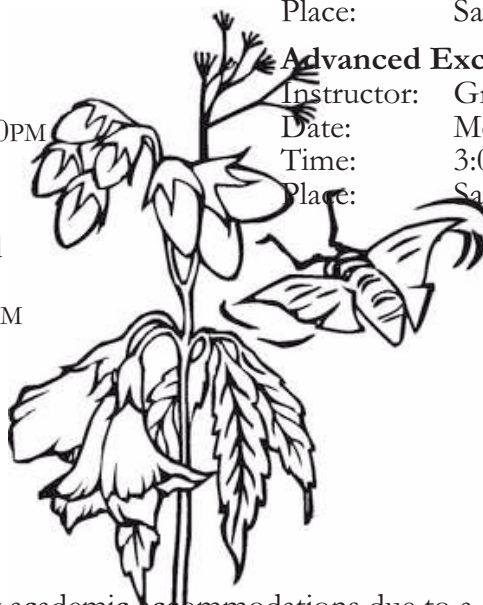
Instructor: Tina Tian  
Date: Thursday, May 11  
Time: 3:00PM to 4:00PM  
Place: Savery 149

## **Introduction to SPSS**

Instructor: Yen-Sheng Chiang  
Date: Monday, May 15  
Time: 1:00PM to 2:00PM  
Place: Savery 135

## **Advanced Excel**

Instructor: Gregg Harbaugh  
Date: Monday, May 22  
Time: 3:00 to 4:00PM  
Place: Savery 137



If you would like to request academic accommodations due to a disability, please contact Disabled Student Services, 448 Schmitz, 543-8924 (V/TDD).

If you have a letter from Disabled Student Services indicating you have a disability that requires academic accommodations, please present the letter to Fred Nick at CSSCR so we can discuss the accommodations you might need for class.

# CSSCR Classes Spring Quarter 2006

CSSCR offers free, non-credit classes to UW faculty, students and staff. Computer classes are also offered by University Computing Services (543-5970), UW Extension (543-2300) and the College of Engineering Continuing Education (543-5539). To sign up for CSSCR classes, call 543-8110, or stop by 145 Savery Hall during office hours, or use our Web page. <http://julius.csscr.washington.edu/> Please note the room number for the location of your class!

## **Introduction to Atlas.ti**

Atlas.ti is a popular textual analysis tool designed to aid users in managing, organizing and supporting research with qualitative data. In this course, we'll navigate the user interface; learn how to import and analyze primary documents; code text; use the query tool; and create free quotations from text, graphic, audio/video files.

Instructor: Marcos Torres  
Date: Monday, April 24  
Time: 2:00PM to 3:00PM  
Place: Savery 149

## **Introduction to Stata**

In this hands-on class we will examine the basics of Stata, including importing data, the treatment of different kinds of variables (numerical, time and string), as well as generating descriptive statistics and graphics.

Instructor: Nalina Varanasi  
Date: Tuesday, April 25  
Time: 10:00AM to 11:00AM  
Place: Savery 137

## **Introduction to Photoshop**

This course will provide information on working with some of the more basic tools of the Photoshop software. As part of this primer, we will also go over some basic information about scanning images using the equipment available here at CSSCR.

Instructor: John Rigg  
Date: Friday, April 28  
Time: 8:00AM to 10:00AM  
Place: Savery 137

## **Introduction to ArcMap**

This course is designed for people who want to know if a Geographic Information System (GIS) can help them in their research. We will consider the topics necessary to start your own project including: data collection and formatting, linking spatial data with other data sets, and the creation of basic thematic maps.

Instructor: Chris Fowler  
Date: Friday, April 28  
Time: 1:30PM to 3:00PM  
Place: Savery 149

## **Introduction to R(rrrr)**

R is a free but powerful tool for Data analysis and graphics. In this class, you will learn how to install R and get started, how to do basic data analysis with R and how to use the "help" functions.

Instructor: JinYoung Kim  
Date: Friday, May 5  
Time, Place: 11:30AM to 12:30PM, Savery 137

## **Intermediate Powerpoint**

This class will provide you with some tools to make your Powerpoint presentations memorable.

Instructor: Chris Rothschild  
Date: Friday, May 5  
Time: 1:30PM to 2:30PM  
Place: Savery 135

## **Introduction to Excel**

This beginning class is aimed at users with little to no experience in Excel, and I'll show you basic functions and applications of Excel.

Instructor: Nicole Matsunaga  
Date: Friday, May 5  
Time: 2:00PM to 3:00PM  
Place: Savery 137

## **Dissertation Formatting**

This lecture will help you format your thesis/dissertation to conform with the UW Graduate School Style and Policy Manual for Theses and Dissertations.

Instructor: Dixielynn Gleason  
Date: Tuesday, May 9  
Time: 8:30AM to 9:30AM  
Place: Savery 149

## **Introduction to the CSSCR Archive, Campus Data and Census Data**

CSSCR maintains a large electronic archive for social science research. This class is to introduce to you the kinds of data we have and ways of searching the archive at CSSCR, ICPSR and other archive websites. We will also look at decennial census data and the American Community Survey (ACS), and how to use DataFerrett to access the Current Population Survey (CPS), Survey of Income and Program Participation (SIPP), National Health Interview Survey (NHIS) and more.

Instructor: Tina Tian  
Date: Thursday, May 11  
Time: 3:00PM to 4:00PM  
Place: Savery 149

## **Introduction to SPSS**

We will look at SPSS's graphical user interface, data entry, data conversion, transforming and recoding data, data analysis, and graphing.

Instructor: Yen-Sheng Chiang  
Date: Monday, May 15  
Time: 1:00PM to 2:00PM  
Place: Savery 135

Class Descriptions Continued on Page 4

# From the Archivist

Topical archive data are freely available to everyone on the ICPSR website. This includes data in the areas of criminal justice, education, health and aging, child care, substance abuse and mental health, and health and medical care. Additionally, the 2000 Census data are available.

## *New Online Data:*

CBS News/NEW YORK TIMES Monthly Poll #2, April 2003  
Diffusion of Public Policy Innovation among the American States, 1969  
Eurobarometer 56.1: Social Exclusion and Modernization of Pension Systems, Sept-Oct 2001  
Eurobarometer 59.0: Lifelong Learning, Health, and Partners and Fertility, January-February 2003  
Eurobarometer 59.1: The Euro and Parental Leave, March-April 2003  
Eurobarometer 59.2: The Common Agricultural Policy, Issues of Immigration, Rail Transport, Consumer Protection, and Information Society, May-June 2003  
Eurobarometer 60.1: Citizenship & Sense of Belonging, Fraud, & the European Parliament, Oct-Nov 03  
Eurobarometer 61.0: The European Union, Globalization, & the European Parliament, Feb-March-04  
Eurobarometer 62.0: Standard European Trend Questions and Sport, October-November 2004  
Eurobarometer 62.1: The Constitutional Treaty, Economic Challenges, Vocational Training, Information Technology at Work, Environmental Issues...Oct.-Nov. 2004  
General Social Surveys, 1972-2004 [Cumulative File]  
International Social Survey Program: Environment II, 2000  
International Social Survey Program: Family and Changing Gender Roles III, 2002  
International Social Survey Program: Religion II, 1998  
National Organizations Survey (NOS), 2002  
Practice Patterns of Young Physicians, 1997: [75 Largest Metropolitan Statistical Areas in the U.S.]  
Practice Patterns of Young Physicians, 1991: [United States]  
Prohibition Movement in the United States, 1801-1920  
State Legislative Survey and Contextual Data, 1995: [United States]  
Survey of Income and Program Participation (SIPP), 2001 Panel

## *New CDROMs/DVDs:*

109th Congressional District Summary Files 2000  
2002 Economic Census - ECON02 Disc 1A  
Annual Statistical Files, WA Vital Registration System: Births 1990-2004; Fetal Deaths 1992-2004  
Annual Statistical Files, WA Vital Registration System: Births 1980-1989  
Annual Statistical Files, WA Vital Registration System: Deaths 1992-2003  
Annual Statistical Files, WA Vital Registration System: Deaths 1980-2004  
Census 2000 Special Tabulation on Aging  
Congressional District Atlas 109th Congress of the US  
US Imports/Exports of Merchandise March - November 2005

## Class descriptions continued from Page 3

### **Advanced Excel**

We will walk through some of the essential data analysis tools, function wizards and large data set management options that are built into Excel and can help you manage large chunks of data. Text management and text functions will be introduced.

Instructor: Gregg Harbaugh  
Date: Monday, May 22  
Time: 3:00PM to 4:00PM  
Place: Savery 137



# 2006 ICPSR Summer Training Program

University of Michigan (Ann Arbor, Michigan)

The ICPSR Summer Program is designed to provide a **comprehensive, integrated program** of studies in research design, statistics, data analysis, and social science methodology. Intensive interdisciplinary work for historians, political scientists, sociologists, psychologists, and other social scientists is provided through a set of courses that can vary in length from three days to four weeks. Experiences in data processing and the analysis of data complement formal lectures and discussions in most of the courses. In short, the Summer Program trains you to be better, and more facile, users of data.

The two four-week sessions of the 2006 Program will meet from June 26 - July 21 and July 24 - August 18; Three- to Five- day workshops are available between May 29 to August 18. **Course information is now available, as is registration and fees at** [www.icpsr.umich.edu/training/summer/index.html](http://www.icpsr.umich.edu/training/summer/index.html).

Completed applications online should reach the Summer Program at ICPSR by Friday, April 28, 2006.

There are five of the workshops are financed through granting agencies, and individuals accepted for participation in those workshops will receive stipends to support their educational activities. Those workshops are:

1. Longitudinal Analysis of historical Demographic Data
2. Quantitative Analysis of Crime and Criminal Justice
3. Quantitative Research on Race and Ethnicity
4. Project on Human Development in Chicago Neighborhoods
5. Health Care Change in the U.S.: Working With the Community Tracking Study

In addition, CSSCR has received \$650 travel stipend to subsidize participants admitted into other workshops. We may give it to one person or divide it between two or more depending on the number of participants from UW. Nominations for the travel fund must be submitted by May 7, 2006.

Feel free to contact Tina Tian at CSSCR if you have any questions:

email: [txtian@u.washington.edu](mailto:txtian@u.washington.edu)

Work telephone: 206-543-8110

Office: 145B Savery

## Time Schedule for Four-Week Courses

### First Session: June 26-July 21

#### Lectures

11:00AM.-NOON	Mathematics for Social Scientists I Mathematics for Social Scientists II	12:30-2:30PM	Mathematical Models: Game Theory
1:00-2:30PM	Introduction to Computing Blalock Lectures: Advanced Topics in Social Research		*Quantitative Analysis of Crime and Criminal Justice *Methodological Issues in Quantitative Research on Race and Ethnicity
5:30-7:30PM	Statistical Computing Using R/S (June-July7)		

#### Workshops

11:00AM-NOON	Bayesian Methods for the Social and Behavioral Sciences Quantitative Historical Analysis Maximum Likelihood Estimation for Generalized Linear Models	2:30-4:30PM.	Introduction to Statistics and Data Analysis I Regression Analysis I: Introduction Regression Analysis II: Linear Models Regression Analysis III: Advanced Methods Scaling and Dimensional Analysis
--------------	--	--------------	---

ICPSR courses continued on Page 7

## ICPSR courses continued from Page 6

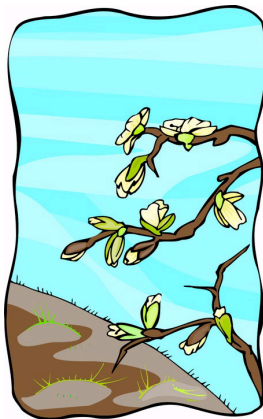
### Second Session: July 24-August 18

<b>Lectures</b>	
8:30-10:00AM	Introduction to Computing (July 25-August 4)
9:00-10:00AM	Complex Systems Models in the Social Sciences
Noon-1:00PM	Matrix Algebra (July 25-August 4)
6:00-8:00PM	Blalock Lectures: Advanced Topics in Social Research
<b>Workshops</b>	
10:00-Noon	Regression Analysis II: Linear Models Time Series Analysis Simultaneous Equation Models Mathematical Models: Advanced Game Theory
1:00-3:00PM	Mathematical Models: Rational Choice Theories of Politics and Society Introduction to Statistics and Data Analysis II Longitudinal Analysis Advanced Multivariate Statistical Methods Advanced Topics in Maximum Likelihood Estimation
3:00-5:00PM	Categorical Analysis "LISREL" Models: General Structural Equations
9:00-5:00PM.	*Longitudinal Analysis of Historical Demographic Data

### Time Schedule for 3- and 5-Day Workshops

May 29-June 2	Categorical Data Analysis (Chapel Hill, NC)
June 5-9	Aging and Health among Hispanics and Latin Americans
June 12-16	Statistical Analysis with Missing Data
June 12-16	Introduction to Multilevel Models Using SAS (Chapel Hill, NC)
June 12-16	Introduction to CrimeStat 3.0 (East Lansing, MI)
June 19-23	Hierarchical Linear Models I: Introduction (Amherst, MA)
June 26-28	Analyzing Developmental Trajectories (Amherst, MA)
June 26-30	Introduction to Spatial Regression August 18 (last day of second session)

# Center for Social Science Computation and Research



## Spring Quarter 2006

02-0407  
University of Washington  
Center for Social Science Computation & Research  
145 Savery Hall Box 353345  
Seattle WA 98195



The Center for Social Science Computation and Research (CSSCR) is an interdepartmental computer center in the College of Arts and Sciences at the University of Washington. CSSCR provides facilities and consulting support for computing activity related to teaching and research at the University. This newsletter is published quarterly, and if you have items you would like included, please contact Fred Nick at 543-8110, or fred@u.washington.edu. If you have a campus mail stop and would like to subscribe to this newsletter, or if you would like to UN-subscribe to this newsletter, please call 543-8110. Thank you for reading this little tiny print. Some images copyright www.clipart.com. Go look at this splendidiferous website!