

CSSCR

SUMMER 2013 NEWSLETTER



CENTER FOR SOCIAL SCIENCE COMPUTATION AND RESEARCH

TABLE OF CONTENTS

From the Director 1
From the Archivist 1
Class Schedule 2
Class Descriptions 3

SUMMER HOURS

COMPUTER ROOMS

Monday through Thursday: 8:00AM—9:00PM
Friday: 8:00AM—5:00PM

We are closed on Saturday and Sunday.

ADMINISTRATIVE OFFICE

Monday through Friday: 8:00AM—NOON
1:00PM—5:00PM

ADMINISTRATIVE STAFF

Fred Nick, Director
Kathy Davis, Fiscal Specialist
Tina Tian, Research Data Analyst/Archivist
Jeff Rud, LAN Manager
Dixielynn Gleason, Publishing Consultant

CONSULTANTS

Mike Babb, Geography
Colin Beam, Psychology
Angela Capoccia, Economics
Joe King, Education
Shin Lee, Communications
Stephanie Lee, Sociology
Kristan Seibel, Political Science
Val Petrova, Jackson School
TBA, Social Work

ADDRESSES

Center for Social Science
Computation & Research
University of Washington
110 Savery Hall Box 353345
Seattle, Washington 98195 U.S.A.
(206) 543-8110
email: csscr@u.washington.edu
<http://julius.csscr.washington.edu/>

The Center for Social Science Computation and Research (CSSCR) is an interdepartmental computer center in the College of Arts and Sciences at the University of Washington. CSSCR provides facilities and consulting support for computing activity related to teaching and research at the University. This newsletter is published quarterly, and if you have items you would like included, please contact Fred Nick at 543-8110, or fred@u.washington.edu. Thank you for reading this little tiny print. Some images copyright www.clipart.com. Go look at this splendid website!

FROM THE DIRECTOR

Well, the heat is here and Summer is upon us. CSSCR is on Summer hours, but we remain busy. Because of reduced staffing this Summer we will not be open at night, nor on weekends. Drop by on weekdays if you need some help! Have a wonderful and relaxed Summer.

Fred Nick

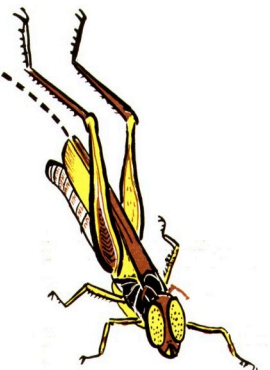
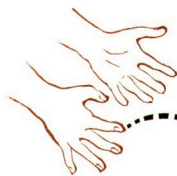
FROM THE ARCHIVIST

NEW CDROMS DVDS:

CensusCD 1990 Long Form in 2010 Boundaries
CensusCD 2000 Long Form in 2010 Boundaries
Zip+4 2012 with 2012 Estimates & 2017 Projections

NEW ONLINE DATA

California Initiative/Referendum Data (2000-2012)
Eurobarometer 74.2: Europe 2020, the Financial and Economic Crisis, and Information on European Political Matters, November-December 2010
Global Digital Activism Data Set, February 2013
Japan 2009 National Survey on Family and Economic Conditions
Japanese General Social Survey (JGSS), 2010
Social Weather Stations Survey [Philippines]: Quarter III, 2003
Whittier Narrows Earthquake Study, 1988



CSSCR CLASSES SUMMER 2013

Here are the ways you can sign up for classes: Call 543-8110; stop by 110 Savery Hall during office hours; send e-mail to ascocarp@u.washington.edu, including the class you wish to take, your name and department; or sign yourself up on our Web page. <http://julius.csscr.washington.edu/>

Introduction to GIS: Working with American Fact Finder

Instructor: Mike Babb
Date: Tuesday, July 16
Time: 2:00PM to 3:00PM
Place: Savery 117

Atlas.ti

Instructor: Valentina Petrova
Date: Wednesday, July 17
Time: 2:00PM to 3:00PM
Place: Savery 117

Introduction to HLM 6.0

Instructor: Joe King
Date: Thursday, July 25
Time: NOON to 1:00PM
Place: Savery 121

Access: An Introduction to Simple Database Creation and Use

Instructor: Angela Capoccia
Date: Friday, July 26
Time: 10:00AM TO 11:00AM
Place: Savery 121

Advanced R

Instructor: Stephanie Lee
Date: Monday, July 29
Time: 10:00AM TO 11:00AM
Place: Savery 117

Introduction to R Using RStudio

Instructor: Colin Beam
Date: Wednesday, July 31
Time: NOON to 1:00PM
Place: Savery 121

ACS Statistical Analyzer

Instructor: Tina Tian
Date: Thursday, August 1
Time: 2:30PM to 3:30PM
Place: Savery 121

Format Your Dissertation or, Embed Wut?

Instructor: D. Gleason
Date: Tuesday, August 13
Time: 8:30AM TO 9:30AM
Place: Savery 121



CLASS DESCRIPTIONS SUMMER 2013

Introduction to GIS: Working with American Fact Finder

This course will introduce students to ArcGIS and showcase how to use American Fact Finder to retrieve data for use in map making.

Instructor: Mike Babb
Date: Tuesday, July 16
Time: 2:00PM to 3:00PM
Place: Savery 117

Atlas.ti

In this class we will review best practices for project management in Atlas.ti 7, including the My Library option for importing primary documents (i.e. interviews in text, audio or video format, images, etc.), how to Copy Bundle your project and other tips for keeping your Hermeneutic Unit (HU) organized. We will practice coding and will explore output functions. Familiarity with Atlas.ti is helpful, but not necessary.

Instructor: Valentina Petrova
Date: Wednesday, July 17
Time: 2:00PM to 3:00PM
Place: Savery 117

Introduction to HLM 6.0

This seminar will explore importing data, creating models and reading output of the program HLM 6. It will be assumed students know about the basics of multilevel modeling as this will focus on the use of the program in the models implementation.

Instructor: Joe King
Date: Thursday, July 25
Time: NOON to 1:00PM
Place: Savery 121

Access: An Introduction to Simple Database Creation and Use

Topics explored will include importing data, structuring a database, and exporting to other programs. No previous knowledge is assumed.

Instructor: Angela Capoccia
Date: Friday, July 26
Time: 10:00AM to 11:00AM
Place: Savery 121

Advanced R

This class covers more advanced topics in R: data manipulation through advanced indexing (useful for when your dataset isn't in quite the right format for the analysis you want to do); using and understanding other's R code; and tips for debugging your own code.

Instructor: Stephanie Lee
Date: Monday, July 29
Time, Place: 10:00AM to 11:00AM, Savery 117

Introduction to R Using RStudio

This class will teach you how to get started with R using the free text editor Rstudio. The course will cover the basic organization of R and Rstudio, where to find good help references, and how to begin a basic analysis. This class is ideal for users who have little or no experience with R.

Instructor: Colin Beam
Date: Wednesday, July 31
Time, Place: NOON to 1:00PM, Savery 121

ACS Statistical Analyzer

The Census Bureau's American Community Survey (ACS) is a great source for detailed population and household characteristics, giving estimates and margins of error for many aspects of the American population. However, sometimes users must blend ACS results to arrive at the exact measurement needed. We will explore some Excel-based files contain several "calculators" that let users enter published ACS estimates and MOE from the Census Bureau to assess the precision of individual estimates, to compare pairs of estimates for their statistical differences, & to calculate the MOE and SE for summing/subtracting, proportion and ratios of published estimates.

Instructor: Tina Tian
Date: Thursday, August 1
Time, Place: 2:30PM to 3:30PM, Savery 121

Format Your Dissertation or, Embed Wut?

This hour is for those who wish to format their dissertations or theses in agreement with the UW's guidelines.

Instructor: D. Gleason
Date: Tuesday, Aug 13
Time, Place: 8:30AM to 9:30AM, Savery 121

