

# Table of Contents

From the Director ..... 1  
From the Archivist ..... 4  
Class Schedule ..... 2  
Class Descriptions ..... 3,4

## Winter Hours

### Computer Rooms

Monday through Thursday: 8:00AM—9:00PM  
Friday: 8:00AM—5:00PM

We are closed on Saturday and Sunday.

### Administrative Office

Monday through Friday: 8:00AM—NOON  
1:00PM—5:00PM

## Consultants

Lindsey Brewer, Communication  
Efrain Gutierrez, Public Affairs  
Gregg Harbaugh, Education  
Sheila Huang, Pinch-Hitter  
Stephanie Lee, Sociology  
Andre Ortega, Geography  
Melissa Pico, Social Work  
Kristan Seibel, Political Science  
Jianguo Wang, Economics  
Betty Zou, Jackson School

## Administrative Staff

Fred Nick, Director  
Kathy Davis, Fiscal Specialist  
Tina Tian, Archivist  
Markus Tsai, LAN Manager  
Dixielynn Gleason, WP/DP Consultant

## Addresses

Center for Social Science  
Computation & Research  
University of Washington  
1100 NE Campus Parkway, Condon 611  
Box 353345  
Seattle, Washington 98195 U.S.A.  
(206) 543-8110  
email: [csscr@u.washington.edu](mailto:csscr@u.washington.edu)  
WWW: <http://julius.csscr.washington.edu/>

The Center for Social Science Computation and Research (CSSCR) is an interdepartmental computer center in the College of Arts and Sciences at the University of Washington. CSSCR provides facilities and consulting support for computing activity related to teaching and research at the University. This newsletter is published quarterly, and if you have items you would like included, please contact Fred Nick at 543-8110, or [fred@u.washington.edu](mailto:fred@u.washington.edu). If you have a campus mail stop and would like to subscribe to this newsletter, or if you would like to UN-subscribe to this newsletter, please call 543-8110. Thank you for reading this little tiny print. Some images copyright [www.clipart.com](http://www.clipart.com). Go look at this splendidous website!

## From the Director

Winter is most certainly here. Let's hope the remainder of the quarter is less exciting than the beginning!

This quarter has several large classes using the Labs, and space on some days is at a premium. So if you plan to use the Labs in your course this quarter, reserve early. If you are just dropping by to do some work, check the schedule for the most opportune times.

*Fred Nick*

## From the Archivist

### New Online Data

American National Election Studies: 2006 ANES Pilot Study

American Time Use Survey (ATUS), 2006

American Time Use Survey (ATUS), 2007

American Housing Survey, 2002: Metropolitan Microdata

American Housing Survey, 2004: Metropolitan Microdata

Afrobarometer Round 3: The Quality of Democracy and Governance in Mozambique, 2005

Afrobarometer Round 3: The Quality of Democracy and Governance in Malawi, 2005

Afrobarometer Round 3: The Quality of Democracy and Governance in Nigeria, 2005

Afrobarometer Round 3: The Quality of Democracy and Governance in South Africa, 2005

Afrobarometer Round 3: The Quality of Democracy and Governance in Tanzania, 2005

Afrobarometer Round 3: The Quality of Democracy and Governance in Uganda, 2005

Afrobarometer Round 3: The Quality of Democracy and Governance in Zimbabwe, 2005

CBS News Monthly Poll #1 - #3, January 2007

CBS News Monthly Poll, March 2007

CBS News Monthly Poll, April 2007

CBS News/New York Times Monthly Poll, May 2007

CBS News/New York Times Clinton/Dole

Comparison Poll, June 1996

*New On-Line Data list continued on Page 4! The most exciting data sets are there, trust me!*

# *CSSCR Winter 2009 Classes*

Here are the ways you can sign up for classes: Call 543-8110; stop by 611 Condon during office hours; send e-mail to [ascocarp@u.washington.edu](mailto:ascocarp@u.washington.edu), including the class you wish to take, your name and department; or sign yourself up on our Web page. <http://julius.csscr.washington.edu/>

## **Getting Comfortable with Atlas.ti**

Instructor: Sheila Huang  
Date: Tuesday, January 27  
Time: 1:00PM to 2:00PM  
Place: Condon 601G

## **Stata: Intro to Panel Regression**

Instructor: Jianguo Wang  
Date: Tuesday, January 27  
Time: 2:00PM to 3:00PM  
Place: Condon 601G

## **Beginning SPSS**

Instructor: Efrain Gutierrez  
Date: Tuesday, January 27  
Time: 5:00PM to 6:00PM  
Place: Condon 601G

## **Excel Animations**

Instructor: Gregg Harbaugh  
Date: Wednesday, January 28  
Time: 3:00PM to 4:00PM  
Place: Condon 601G

## **MS Word and the UW Publishing Rules**

Instructor: Dixielynn Gleason  
Date: Thursday, January 29  
Time: 8:30AM to 9:30AM  
Place: Condon 601G

## **Transitioning to Excel 2007**

Instructor: Kristan Seibel  
Date: Friday, January 30  
Time: 2:30PM to 3:30PM  
Place: Condon 601G

## **The Quandary of Queries and other Microsoft muddles in Access 2007**

Instructor: Melissa Pico  
Date: Monday, February 9  
Time: 2:30PM to 3:30PM  
Place: Condon 601G

## **Troubleshooting R (rrrrrr)**

Instructor: Stephanie Lee  
Date: Tuesday, February 10  
Time: 11:00AM to NOON  
Place: Condon 601G

## **How to Start Using SAS**

Instructor: Tina Tian  
Date: Wednesday, February 11  
Time: 2:00PM to 3:00PM  
Place: Condon 601G

## **SPSS: Beyond the Basics**

Instructor: Betty Zou  
Date: Wednesday, February 11  
Time: 3:00PM to 4:00PM  
Place: Condon 601G

If you would like to request academic accommodations due to a disability, please contact Disabled Student Services, 448 Schmitz, 543-8924 (V/TDD). If you have a letter from Disabled Student Services indicating you have a disability that requires academic accommodations, please present the letter to Fred Nick at CSSCR so we may discuss the accommodations you might need for class.

# CSSCR Classes Winter 2009

CSSCR offers free, non-credit classes to UW faculty, students and staff. Computer classes are also offered by University Computing Services (543-5970), UW Extension (543-2300) and the College of Engineering Continuing Education (543-5539). To sign up for CSSCR classes, call 543-8110, or stop by 611 Condon during office hours, or use our Web page. <http://julius.csscr.washington.edu>

## Getting Comfortable with Atlas.ti

This Atlas.Ti session orients course participants to the interface of the program and its frequently-used functions. Participants as qualitative researchers will also learn good practices to maximize the program capacity in facilitating personal research and/or teamwork. To customize the learning experience, the instructor encourages you to bring your questions or data you are currently using or intend to use to the session. We'll go over the following skills:

1. Getting comfortable with importing data and managing imported documents;
2. Assigning codes and managing the assigned codes;
3. Printing in various formats;
4. Performing search functions;
5. Keeping notes and memos; and
6. Saving and migrating projects to various work stations.

Instructor: Sheila Huang  
Date: Tuesday, January 27  
Time: 1:00PM to 2:00PM  
Place: Condon 601G

## Stata: Intro to Panel Regression

Panel data analysis is a method of studying a particular subject within multiple sites, periodically observed over a defined time frame. In this lecture, I will give a brief overview of Stata basics, and introduce panel regression modeling.

Instructor: Jianguo Wang  
Date: Tuesday, January 27  
Time: 2:00PM to 3:00PM  
Place: Condon 601G

## Beginning SPSS

This course will cover the basics of the SPSS package. This is an ideal course for students with no experience with this software. We will cover the structure of SPSS and how to input, manipulate, analyze and show statistical data.

Instructor: Efrain Gutierrez  
Date: Tuesday, January 27  
Time: 5:00PM to 6:00PM  
Place: Condon 601G

## Excel Animations

In this lecture, we will talk about using Excel to generate interactive graphics for instruction.

Instructor: Gregg Harbaugh  
Date: Wednesday, January 28  
Time: 3:00PM to 4:00PM  
Place: Condon 601G

## MS Word and the UW Publishing Rules

This lecture will help you format your thesis/dissertation to conform with the UW Graduate School Style and Policy Manual for Theses and Dissertations.

Instructor: Dixielynn Gleason  
Date: Thursday, January 29  
Time: 8:30AM to 9:30AM  
Place: Condon 601G

## Transitioning to Excel 2007

Reluctant to use Excel 2007 because it seems too unfamiliar from previous versions, or new to using Excel and want to learn more? The first part of this class will lead the unwilling through the "ribbons" of Excel 2007 and illustrate where the most commonly used and useful tools are located. The second part will focus on managing and displaying data through the use of formulas and charts.

Instructor: Kristan Seibel  
Date: Friday, January 30  
Time: 2:30PM to 3:30PM  
Place: Condon 601G

## The Quandary of Queries and Other Microsoft Muddles in Access 2007

This class will explore some of the basic and not-so-basic query types in Access 2007. Although we will not be using macros or SQL, we will look at how to combine tables, update information, create new tables, and crosstabs all with the help of a qualified query! Time permitting, we will also explore other Access tools, like forms and reports, and how they can relate to your queries.

Instructor: Melissa Pico  
Date: Monday, February 9  
Time: 2:30PM to 3:30PM  
Place: Condon 601G

### **Troubleshooting R (rrrrrr)**

This class is for the beginner or beginner-intermediate R user who is able to write R code, but doesn't quite know what to do when his/her R code doesn't work as intended. We'll go over some of the underlying logic of the R language and environment (in a user-friendly way, not a scary technical way!) so students can better understand why their code might not be working, and we will look at some effective strategies for troubleshooting your R code.

This class is not intended as an introduction to R. There are classes through CSDE and CSSS for that, as well as many online resources to get you started.

Instructor: Stephanie Lee  
Date: Tuesday, February 10  
Time: 11:00AM to NOON  
Place: Condon 601G

### **How to Start Using SAS**

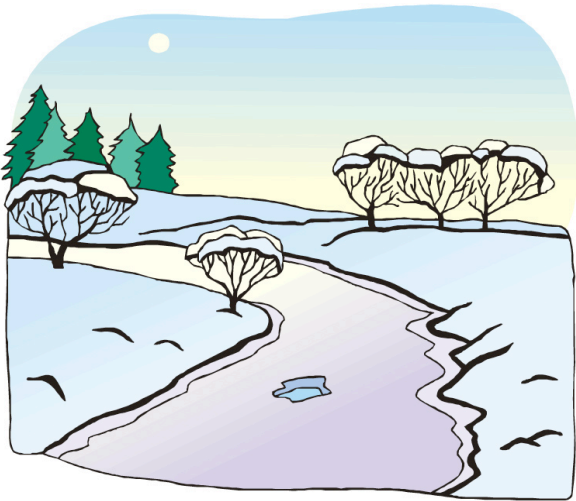
In this beginning class, some basic features of SAS and basic data analysis procedures will be covered. The topics include: an overview of the SAS system, how to create SAS data sets and to access permanent SAS data sets, as well as formatting data, concatenating and match merging data sets, and some basic statistics procedures. Also, we will discuss how to convert an SPSS file to a SAS file and vice versa.

Instructor: Tina Tian  
Date: Wednesday, February 11  
Time: 2:00PM to 3:00PM  
Place: Condon 601G

### **SPSS: Beyond the Basics**

In this class you will learn some tricks to prepare your data for analysis. Topics covered in this class include: recoding data, creating dummy variables, computing variables, what to do with cases that repeat, what to do with questions with multiple responses, and merging separate SPSS files.

Instructor: Betty Zou  
Date: Wednesday, February 11  
Time: 3:00PM to 4:00PM  
Place: Condon 601G



## **New Online DataSets, continued from Page 1**

Comparison of Older Volunteers and Older Nonvolunteers in the Philadelphia Area, 1993-1998

Eurobarometer 63.4: European Union Enlargement, the European Constitution, Economic Challenges, Innovative Products and Services, May-June 2005

Eurobarometer 68.1: The European Parliament and Media Usage, September-November 2007

Global Terrorism Database 1.1, 1970-1997

Global Terrorism Database II, 1998-2004

Integrated Postsecondary Education Data System (IPEDS): Fall Enrollment, 1987

Introduction of Television to the United States Media Market, 1946-1960

The 1974-1979-1980 Canadian National Elections and Quebec Referendum Panel Study

The 1974-1979-1980 Canadian National Elections and Quebec Referendum Panel Study

Third-Wave 1994 Survey of a Representative Sample of Men Employed in Civilian Occupations in the United States

National Survey of Miranda Warnings, 2005-2006

Studies in International Integration, 1967

Women in Parliament, 1945-2003: Cross-National Dataset