

TSMC Pandemic Preparedness

- About TSMC
- Pandemic Risk Management Flow and Organization
- Cooperation between Public and Private Sectors
- Pandemic Business Continuity Plan
- Supply Chain Consolidation
- Actions in Different Phases
- Rules Documented

TSMC / Fang-ming Hsu
May 30, 2008
fmhsua@tsmc.com

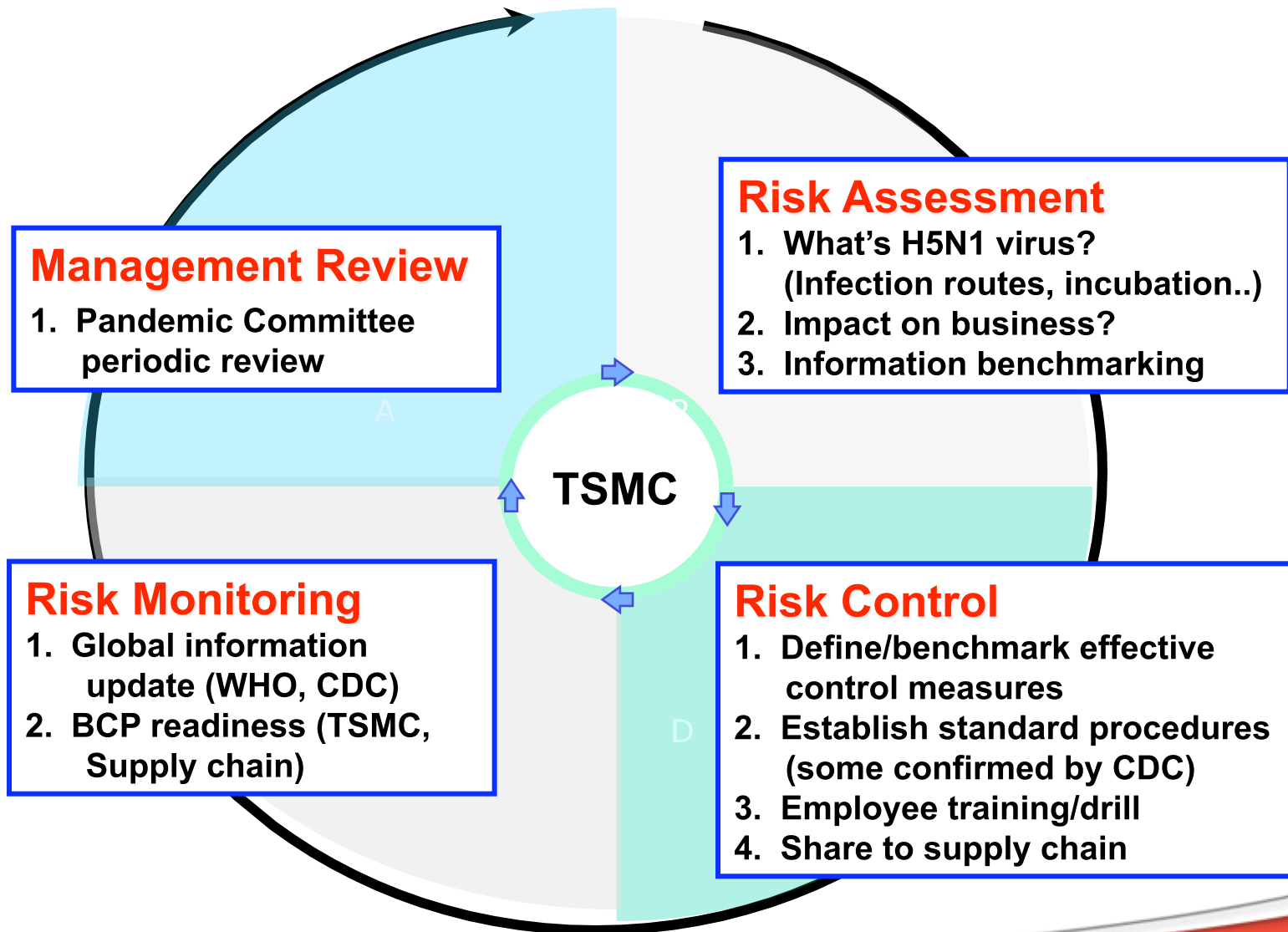
About TSMC

(Taiwan Semiconductor Manufacturing Company, Ltd.)

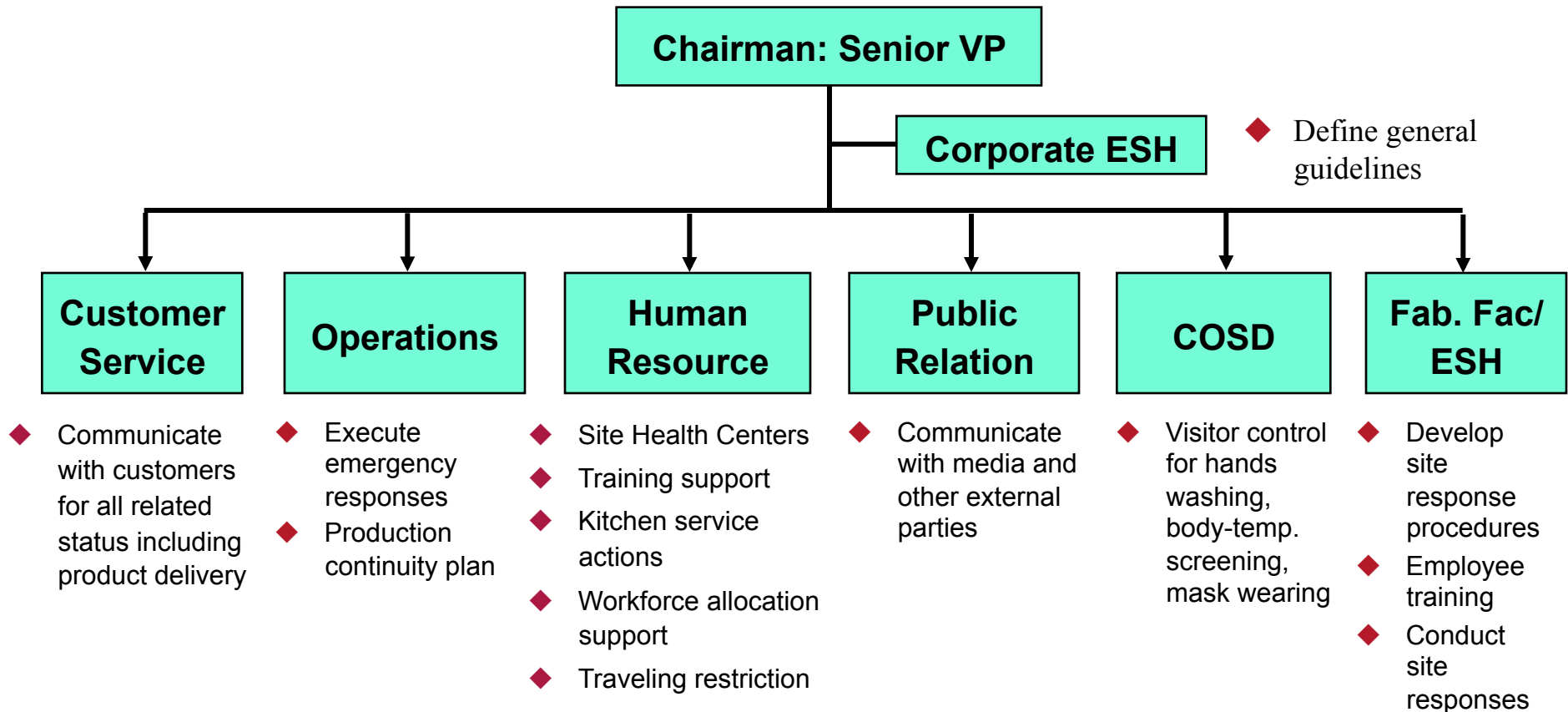
- ❑ Founded in 1987, TSMC was the first and is the largest IC foundry in the world.
- ❑ Revenue for 2007 reached US\$ 9.82 billion; net income was US \$3.35 billion.
- ❑ One of DJSI World company since 2001



Pandemic Risk Management Flow



Pandemic Committee



COSD: Corporate Security Division

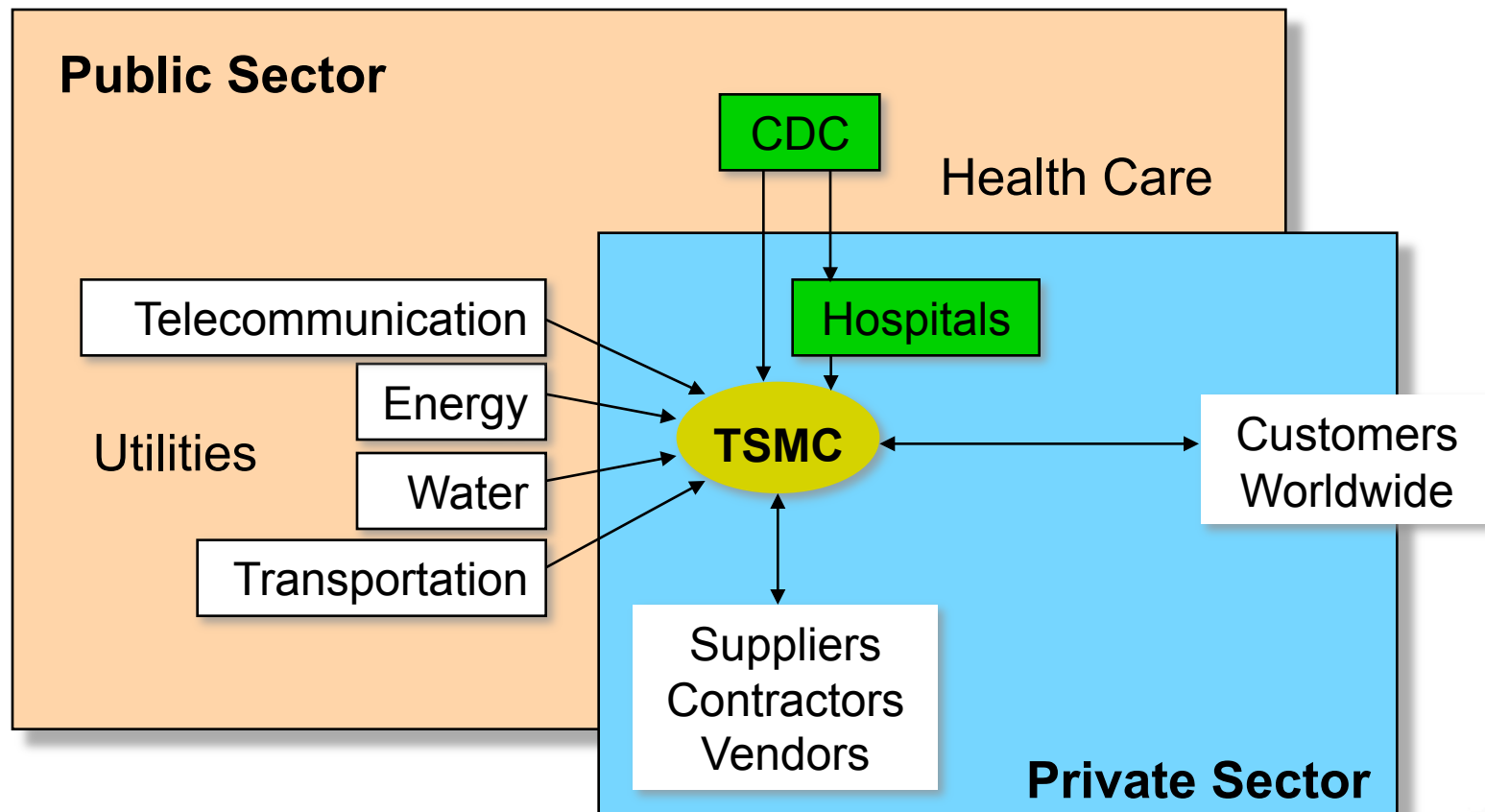
FAC: Facility Departments

ESH: Environmental, Safety, Health

Partnership and Collaboration

Public with Private Sectors

- ❑ Preparation Stage: Public and private sectors collaborate.
- ❑ Emergency Response Stage: Private sector fully relies on public sector.

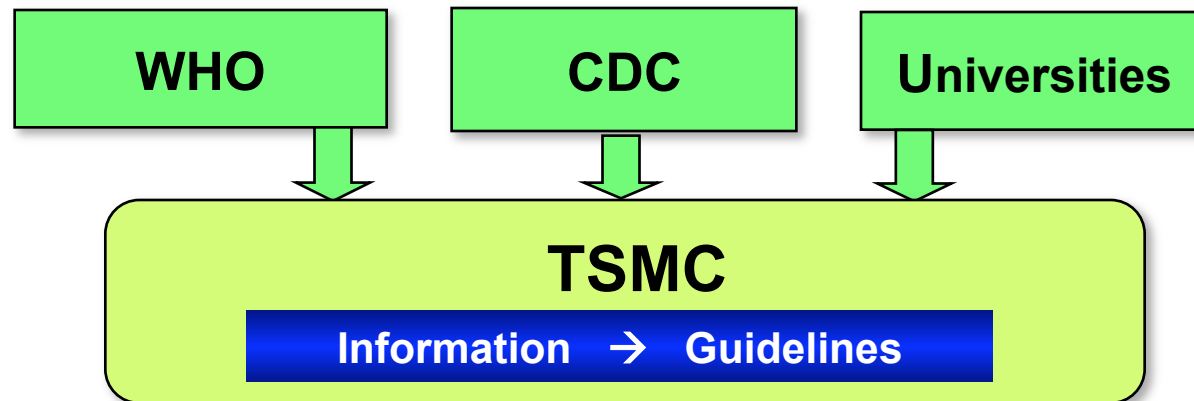


Cooperation at Preparation Stage

Public and Private

General Information

- Pandemic Influenza knowledge
- Global Pandemic update
- Infection Control at Workplace
- Public Pandemic Strategy



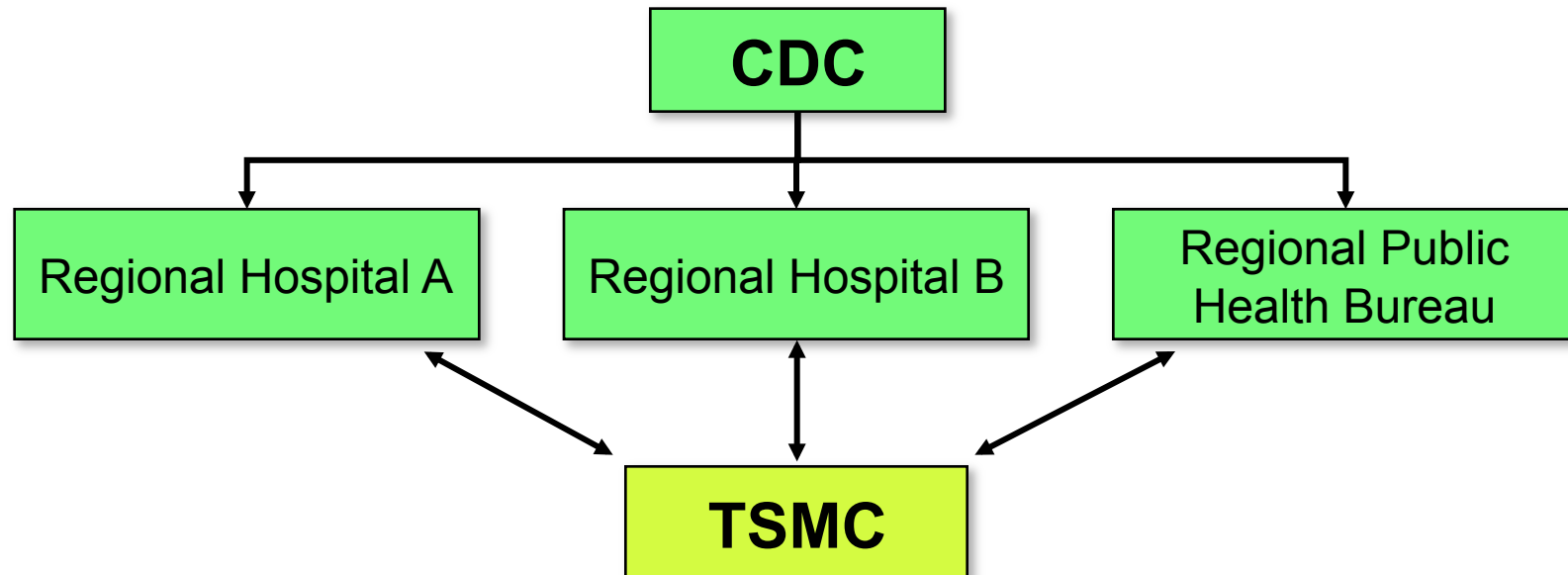
Effective/Feasible Guidelines

- Personnel Protection Rule
- Workplace Specific Rules: Cleanrooms, Office,...
- Quarantine and Release Rules
- Business Continuity Plan



Cooperation in Drill / Real Case

Public and Private



Focus on :

- Emergency Reporting Mechanism
- Case Inspection
- Medical Treatment
- Home Quarantine Support
- Labor Allocation at Workplace

Pandemic Business Continuity Plan (BCP)

TSMC's Pandemic BCP divides into two stages:

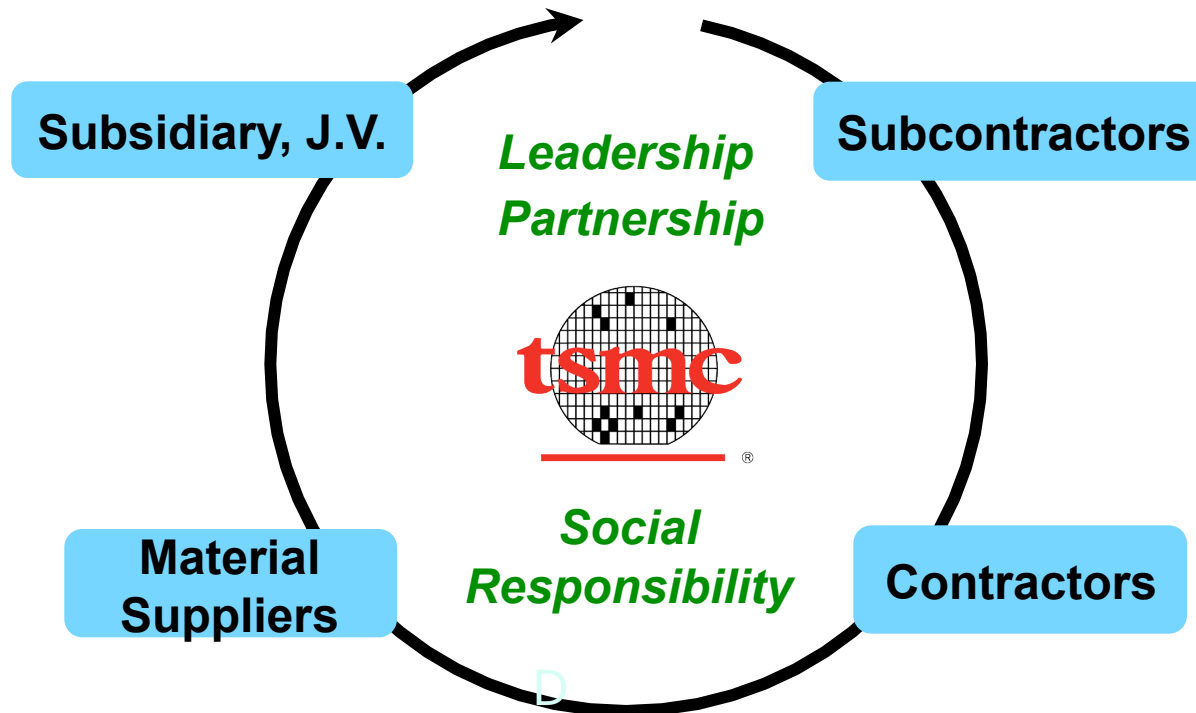


(*) Based on the readiness of medical treatment

(**) Assume that humankind will build up immunity against the disease in 3-4 months.

Supply Chain Consolidation

- ❑ **Share** pandemic guidelines/procedures to supply chain
- ❑ **Audit** suppliers' business continuity plans
- ❑ **Drill** with key suppliers



Actions at Different Pandemic Stages

Level O	Level A2	Level A1	Level B	Level C
1.No human-to-human transmission globally 2.No domestic avian-to-human transmission	Avian-to-human transmitted case or imported case occurred in Taiwan	Human-to-human transmission confirmed by WHO	First confirmed case of human-to-human transmission domestically	Secondary human-to-human transmission reported domestically

- | | | | |
|---|---|---|---|
| <ul style="list-style-type: none"> ◆ Organize pandemic response team ◆ Monitor CDC and WHO Information ◆ Educate employees ◆ Prepare masks, thermometers, hands washers,... ◆ Develop “Avian Flu Response Procedures” ◆ Execute food safety control | <ul style="list-style-type: none"> ◆ Visitors wash hands. ◆ Workers wear masks if catch cold. ◆ Employee Anti-pandemic guideline ◆ Monitor sick employees closely. ◆ Employee Traveling Management | <ul style="list-style-type: none"> ◆ Organize the committee ◆ Execute temperature screening for all at points of entry ◆ Start employees traveling restriction | <ul style="list-style-type: none"> ◆ Everybody washes hands while entering company sites. ◆ All employees wear masks while staying in company. ◆ Enhance sterilization program at sites. ◆ Cancel unnecessary meetings, appointments, and other gatherings. ◆ Trigger emergency response plan while any real case found at TSMC. ◆ Keep customers closely informed. |
|---|---|---|---|

Note: Defined by CDC (Center of Disease Control), Chinese Taipei

Rules Documented

1. Contagious Disease Risk Management Guideline
2. Cafeteria and Kitchen Management
3. Employee Anti-Pandemic Guideline
4. Employee Traveling Restriction Rule
5. Employee Segregation and Leave Management
6. Emergency Response Procedure
7. Pandemic Personnel Protection Guideline
8. Pandemic Visitor and Contractor Management
9. Pandemic Gathering Guideline
10. Pandemic Waste Treatment
11. Pandemic Environment Control Guideline