



UNIVERSITY OF WASHINGTON

**Family Medicine
Residency Network**

www.wwaminetwork.org

University of Washington Family Medicine Residency Network

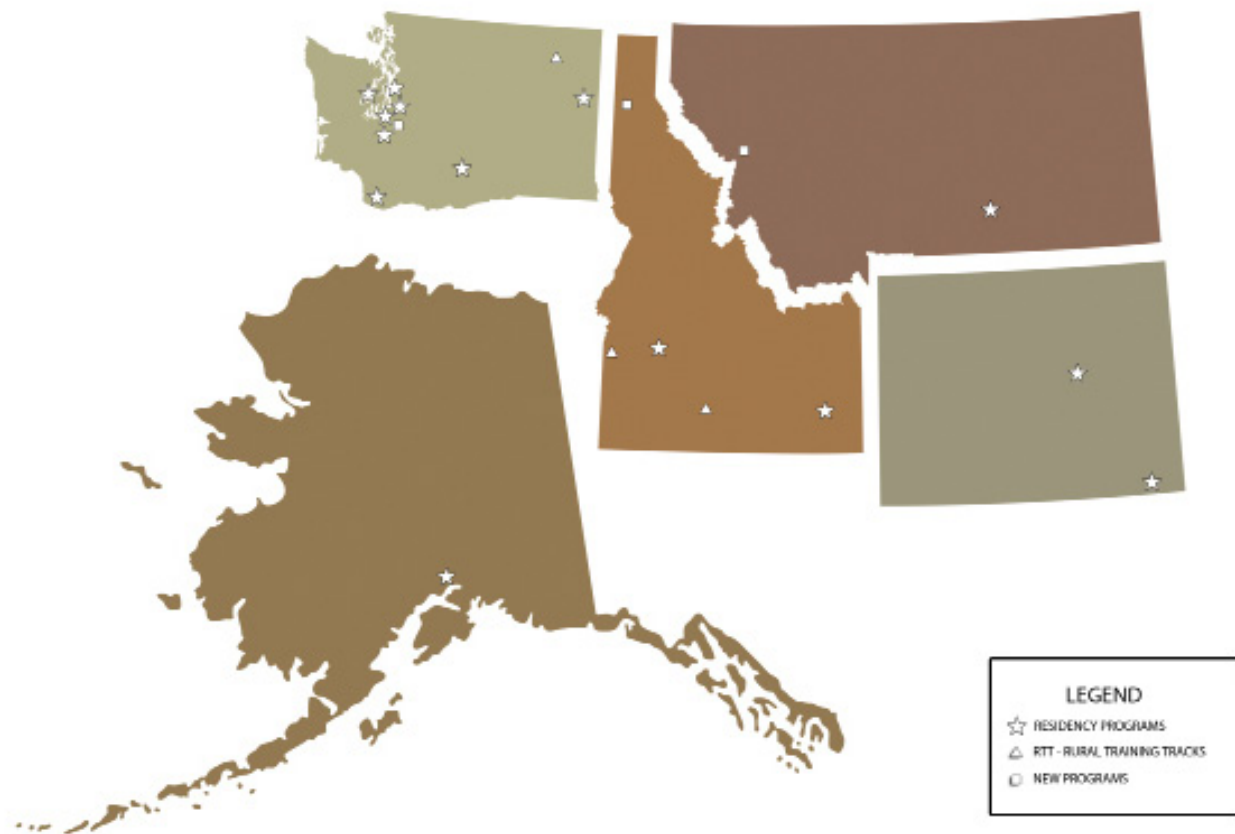
About our Organization

The University of Washington Family Medicine Residency Network is a group of family medicine residency programs related to each other by geography and university affiliation. The Network is one of the largest residency networks in the United States, and now comprises 18 residency programs in Washington, Alaska, Montana, Idaho and Wyoming. Washington programs are located in Bremerton, Olympia, Renton, Seattle, Spokane, Tacoma, Vancouver, and Yakima. Idaho programs are sited in Boise and Pocatello; Wyoming programs are in Cheyenne and Casper; Montana has a program in Billings; and Alaska has a program in Anchorage. In addition, there are a number of programs in development in the region. Those far enough in the development process to have an expected start date are located in: Wasilla, AK; Coeur d'Alene, ID; Missoula, MT; Puyallup, WA; and Tacoma, WA.

Our Purpose

The Network exists to promote excellence in family medicine residency education, to provide academic leadership, and to respond to societal needs for family physicians. The quality of the individual programs is high, reflected in the number and quality of applicants and residents, the excellence of the faculty, and the strong support of the sponsoring hospitals in providing up-to-date facilities and skilled staff. A description of Network services and organizational structure is provided within this brochure.

To learn more about the Family Medicine Residency Network, please visit our web page: www.wwaminetwork.org.



Network Structure & Governance/Strategic Planning

Executive Committee

Part of the decentralized governance structure used to improve communication and facilitate decision-making. It conducts the work of the Network between regular Directors meetings and facilitates information flow throughout the Network. It is comprised of a President, Vice President, Education Chair, Member-at-Large, Finance Chair, Network Director (Ex-officio); and Dept. Administrator, (Ex-officio). The committee meets quarterly prior to Directors' meetings and monthly by phone. Typical agenda items include Network involvement in national legislative activity, liability insurance coverage, Network finances, agendas for directors' meetings, affiliation and internal reviews, marketing issues, and clinical faculty appointments.

Finance Committee

A subset of the Executive Committee, has oversight of Network finances and expenditures. Members include the President, Finance Chair, Network Director, and Network Manager (Ex-officio). The committee meets quarterly prior to Directors' meetings.

Education Committee

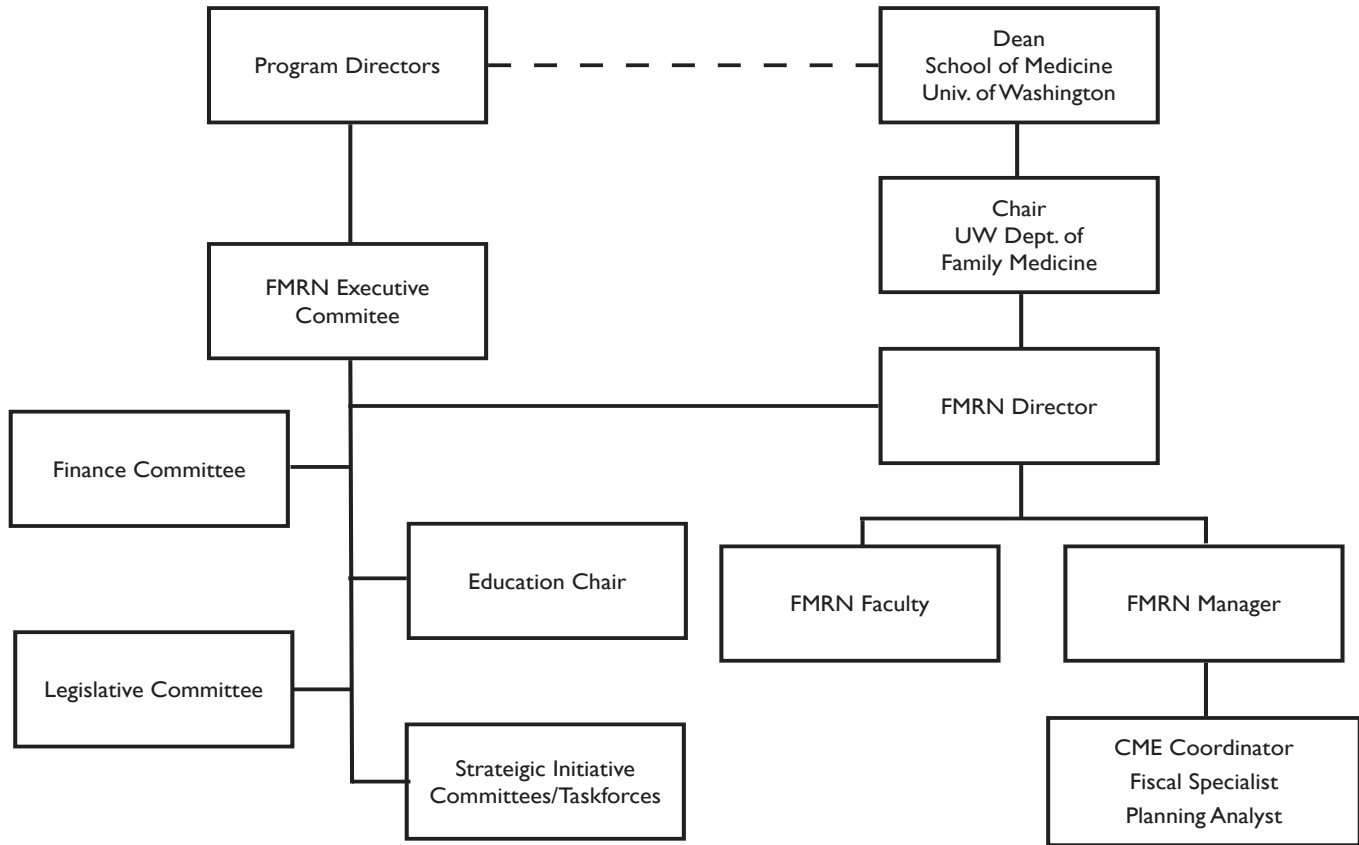
Oversees Network faculty development and other educational activities, including director development sessions prior to each directors meeting, faculty development workshops, grant-funded faculty development programs, chief resident training, ALSO and other clinical training throughout the Network.

Legislative Committee

Established in 2004 when Network Directors realized the importance of educating themselves and their legislators about state and federal issues directly impacting Family Medicine residency education. This committee, which includes representatives from each state and urban and rural areas of Washington, is recognized nationally for its effectiveness in communicating clearly and quickly on key issues.

Strategic Initiative Committees/Taskforces

Developed periodically as needed to move forward on initiatives related to the Network's Strategic Plan.



What benefits do I get as a Resident in WWAMI from the Residency Network?

Library Access

Access to the UW Health Sciences library: with a single login you have every reference you expect from an excellent medical school library no matter where you are. Hundreds of journals are available full text to print from your desktop.

Evidence-Based Practice (EBP) Emphasis

For the last 15 years we have been training faculty and providing resources to ensure that when there is good evidence you know where to find it and how to apply it to your patients. Each program has developed its own ways to teach EBP and sharing methods is encouraged.

Review Evidence for Publication

With your faculty, you will have the opportunity to do evidence reviews to answer questions generated in practice and to write these up for publication as a Clinical Inquiry in the *Journal of Family Practice*, *American Family Physician*, or *Evidence-Based Practice* through the national Family Physicians Inquiries Network (FPIN).

Communication

The Network maintains email lists for every resident class and for the chief residents to foster collaboration and the sharing of ideas between programs.

Courses

Resource sharing between programs, for example, coordinating the Advanced Life Support Obstetrics (ALSO) courses. WWAMI residency programs are developing patient centered medical homes in training programs and a residency-based practice research network is active and involves residents at many sites.

Online Administration Systems

Access to New Innovations, a web-based residency administration software suite that is used for scheduling, evaluations, conferences, curricula and other program activities.

Opportunities for Leadership

A two-day Chief Resident Development course is offered to incoming Chiefs every Spring. The group gets a chance to meet each other and hear tips from outgoing Chiefs.

Resources

For creating and sharing resources, you have access to Network's Digital Resource Library, an indexed collection of materials supporting education, research, and special projects in WWAMI programs.

WWAMI Practice Opportunities Listing

As you near completion of your residency training, stay informed of practice openings and advanced fellowship training opportunities for family physicians throughout the WWAMI region.



Groups Coordinated by the Network

The FMRN coordinates a number of groups, including scheduling meetings, creating email list-serves, and facilitating sharing of resources.

- Program Administrators
- ALSO/OB Coordinators
- Behavioral Scientist Faculty
- Chief Residents
- Directors' Executive Committee
- Directors' Finance Committee
- Faculty Development Fellowship
- Family Medicine Education Advisory Committee
- Legislative Committee
- Network Program Directors
- Special Project Task Forces
- Residency Coordinators



Other Services the Residency Network Provides

In addition to the noted previously for residents, the FMRN also offers a number of other services to affiliated programs:

Resident Recruitment

- Clearinghouse for available resident positions
- Creation of Network recruitment materials
- Coordination of Network Applicant Interview Schedule
- Coordination of Network presence at National Conference of Family Medicine Residents & Students
- Coordination with Pre-doctoral section to involve Network faculty in student recruitment activities

Reviews/Consultations

- Facilitation of program-to-program sharing of best practices & faculty expertise
- Grant reviews
- Internal reviews to assist Network programs in preparation for accreditation reviews
- Peer consultations

Faculty Development

- Faculty Development Fellowship
- Faculty Development Workshops
- Faculty Scholarship Opportunities
- Director Development Sessions

Marketing / Informational

- Advertising family physician practice opportunities in the WWAMI NET/WORK newsletter
- Dissemination of state/national legislative & regulatory information
- Faculty development brochures & materials

Administrative

- Affiliation agreements
- Benchmarking, Salary, and Graduate Follow-up Surveys
- Collection of program statistics
- Development & maintenance of Network Database
- Processing of clinical faculty appointments
- Reports: Network, Departmental, and WWAMI
- Videoconferencing resources

Network Administration

- Budget oversight & administration
- Capitation payments to Washington civilian programs
- Purchasing
- Travel reimbursement processing
- Grant writing & administration

Affiliated Network Programs

- Alaska Family Medicine Residency
- Central Washington Family Medicine
- Community Health Tacoma (expected start 2013/14)
- East Pierce Family Medicine (expected start 2012)
- Family Medicine Coeur d'Alene (expected start 2014)
- Family Medicine of Southwest Washington
- Family Medicine Spokane
- Family Medicine Residency of Idaho
- Family Medicine Residency of Western Montana (expected start 2013)
- Group Health Cooperative
- Idaho State University Family Medicine Residency
- Madigan Family Medicine Residency
- Mat-Su Regional Medical Center (expected start 2013)
- Montana Family Medicine Residency
- Providence St. Peter Hospital
- Puget Sound Family Medicine
- Swedish Family Medicine Cherry Hill
- Swedish Family Medicine First Hill
- Tacoma Family Medicine
- University of Washington Medical Center
- U of Wyoming Family Medicine Residency; Casper
- U of Wyoming Family Medicine Residency; Cheyenne
- Valley Family Medicine

For videos, information and links to all residency programs affiliated with the Network, check out our Virtual Residency Fair Project at:

<http://depts.washington.edu/fammed/vfair/index.html>



UNIVERSITY OF WASHINGTON

Family Medicine Residency Network

www.wwaminetwork.org

Network Faculty & Staff

Nancy Stevens, MD, MPH, Network Director
Ardis Davis, MSW, Assistant Director
Chris Vincent, MD, Informatics Coordinator
Lisa Johnson, MD, Faculty Development
Judy Pauwels, MD, New Programs
Paul Ford, MA, Teaching Associate
Tiffany Jones, Network Manager
Teresa Bess, Continuing Education Coordinator
Kathryn Vinson, Fiscal Specialist
Amanda Harris, Program Assistant

Network Contact Info

University of Washington
Family Medicine Residency Network
Box 354696
Seattle, WA 98195
Main (206) 685-1856
Fax (206) 685-0610
<http://www.wwaminetwork.org>

wwaminetwork.org