

How to Take the Three Photographs

Take these 3 photos following the directions below.



Standardized Photo Set

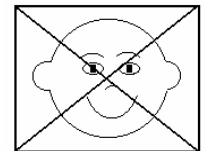
Photo 1
(Front View)

Photo 2
(Angle View)

Photo 3
(Side View)

Facial Expression

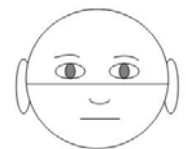
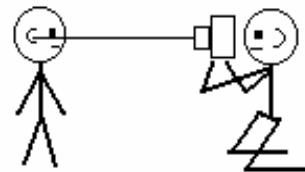
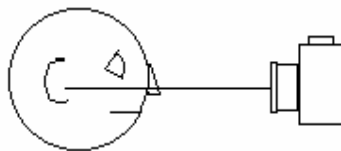
- Place $\frac{3}{4}$ " sticker on forehead between eyebrows.
- Eyes wide open
- No glasses
- NO SMILE
- Lips gently closed
- In Photo 1, have child look straight at you. You should be able to see both ears equally.



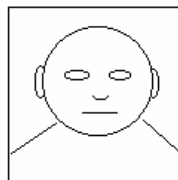
No Smile

Camera Position

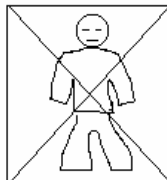
- The camera should be directly in front of the face. An imaginary line drawn between the two ear canals should fall just below the eyes.



- Take a close-up picture of just the head, not the whole body.



Yes



No