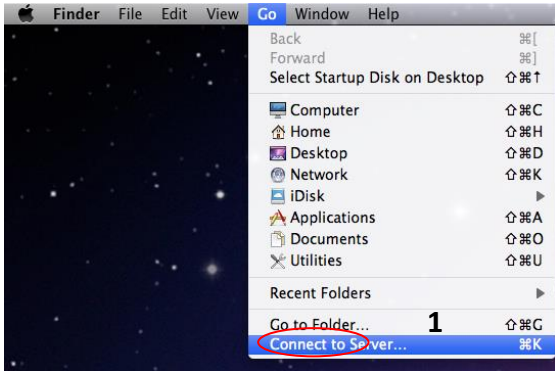


How to access flow data on a Mac



1.) In the top Menu click “GO” and scroll to “Connect to Server”

2.) Type the network path:

smb://immun-black.medicine.washington.edu/users

3.) Click “Connect”

4.) In the Name: field enter “netid\username”, in the Password: field enter your corresponding UWNNetID password click “Connect”

5.) A share named **users** will appear on the desktop of your computer.

6.) Your data is in the folder with your user name. If you cannot see this folder, please contact the facility to correct your permissions.

