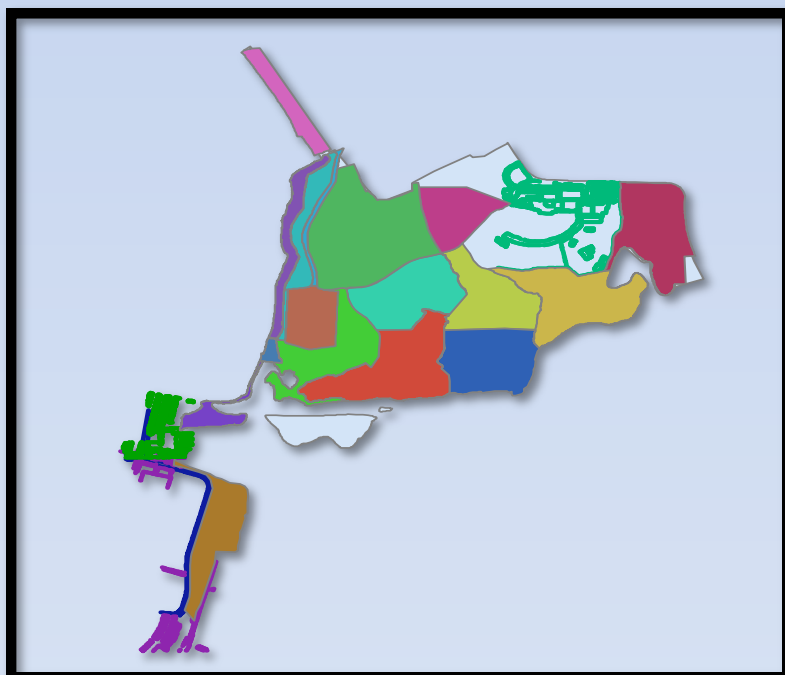


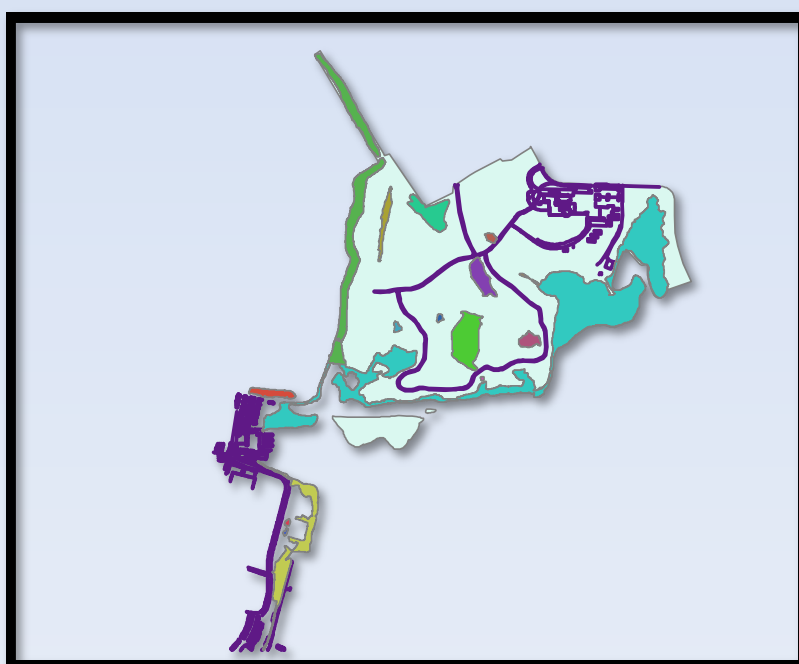
Union Bay Natural Area: Maps for Information and Management

What's Happening at UBNA?

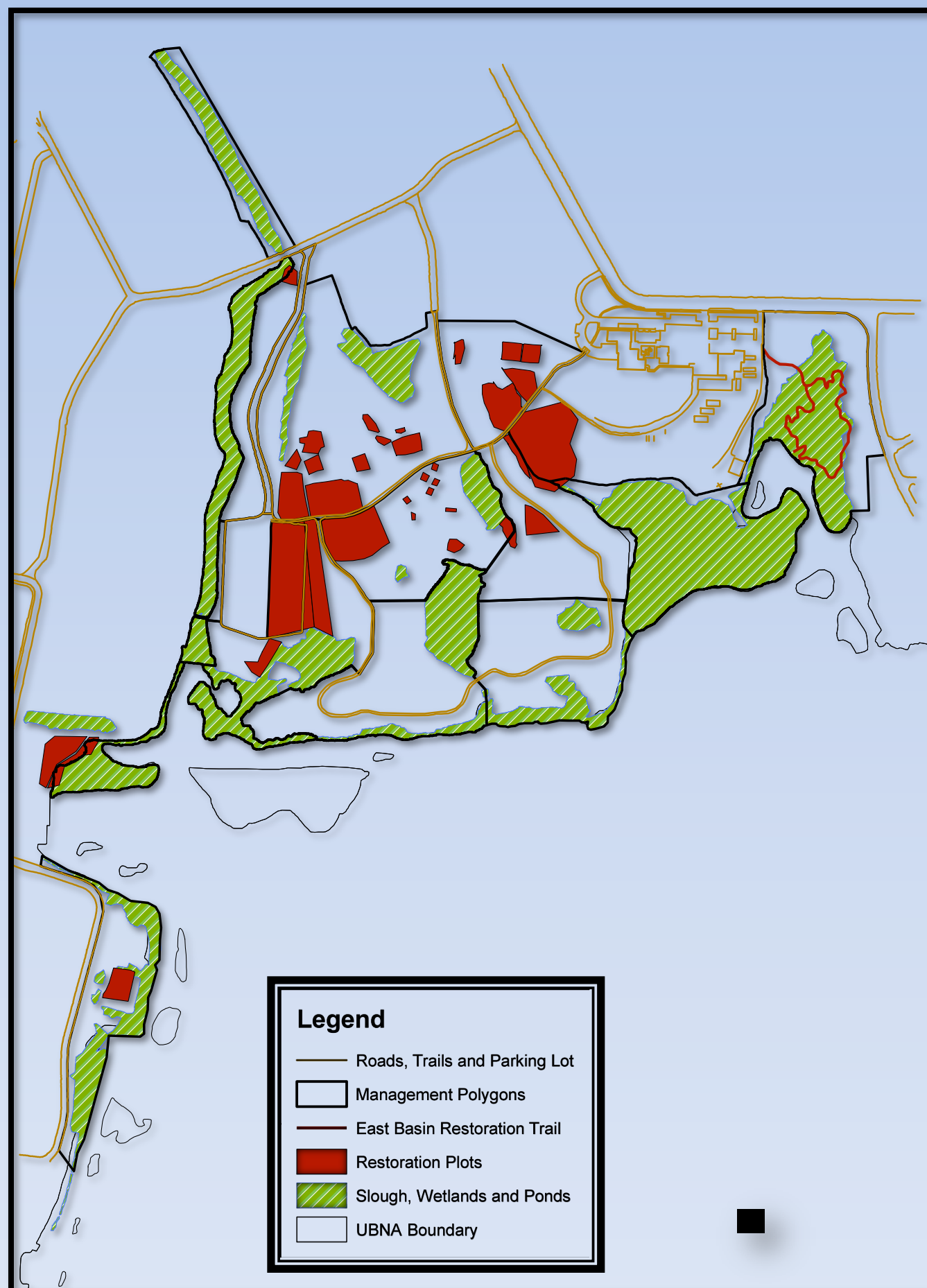
The goal of this project was to compile historic and current research, restoration, and recreation information for the Union Bay Natural Area into Geospatial Information System (GIS) database. This was done by transforming hard copies from various sources into digital form on ArcGIS, as well as through field work to obtain coordinates of important features. The database will be used as a community work space, available to anyone working in UBNA. The long term intent is that this information will be available for updating and refinement by those who use it.



An example of a map focusing on management zones.



A map with just the wetland and boundary data.



Using a number of layers can allow for analysis of interacting features and a better understanding of UBNA and its projects.

What Information is Available?

Current maps include information on management zones, wetlands, restoration plots, potential subsidence, shoreline advancement by 2025, and more. Raster data used to compile the maps will also be available. The workspace is intended to be open for additional information to be added as well.