

Bigleaf Maple Decline in Western Washington

Jake Betzen and Patrick Tobin

School of Environmental and Forest Sciences, University of Washington



Problem

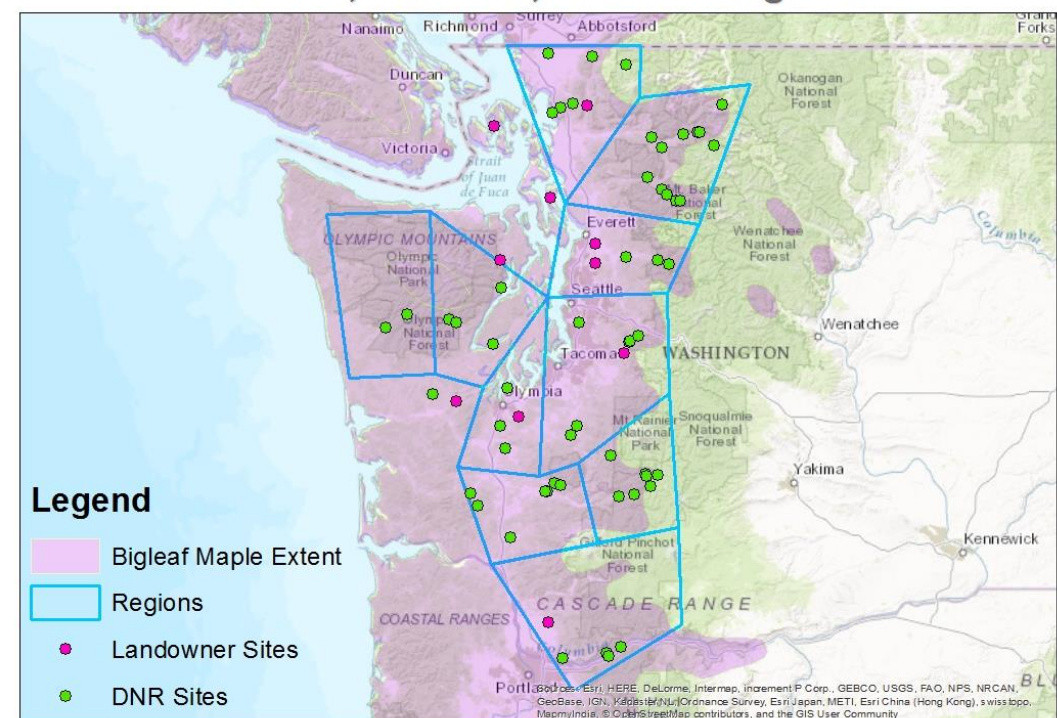
- Bigleaf maple (*Acer macrophyllum*)
- Deformed, wilted, and shrunk leaves
- Partial or entire crown dieback; death
- First Reported in 2011
- Reported throughout entire range



Objectives

- Investigate the extent and severity of decline
- Compare conditions associated with presence and absence of symptoms
 - Changing Climate
 - Pollution
 - Introduced Pathogen

Bigleaf Maple Extent, Sites, and Regions



Methods

- Dendrochronology
- Elemental Analysis of Foliage and Soil
- Comparison of Recorded Climate

