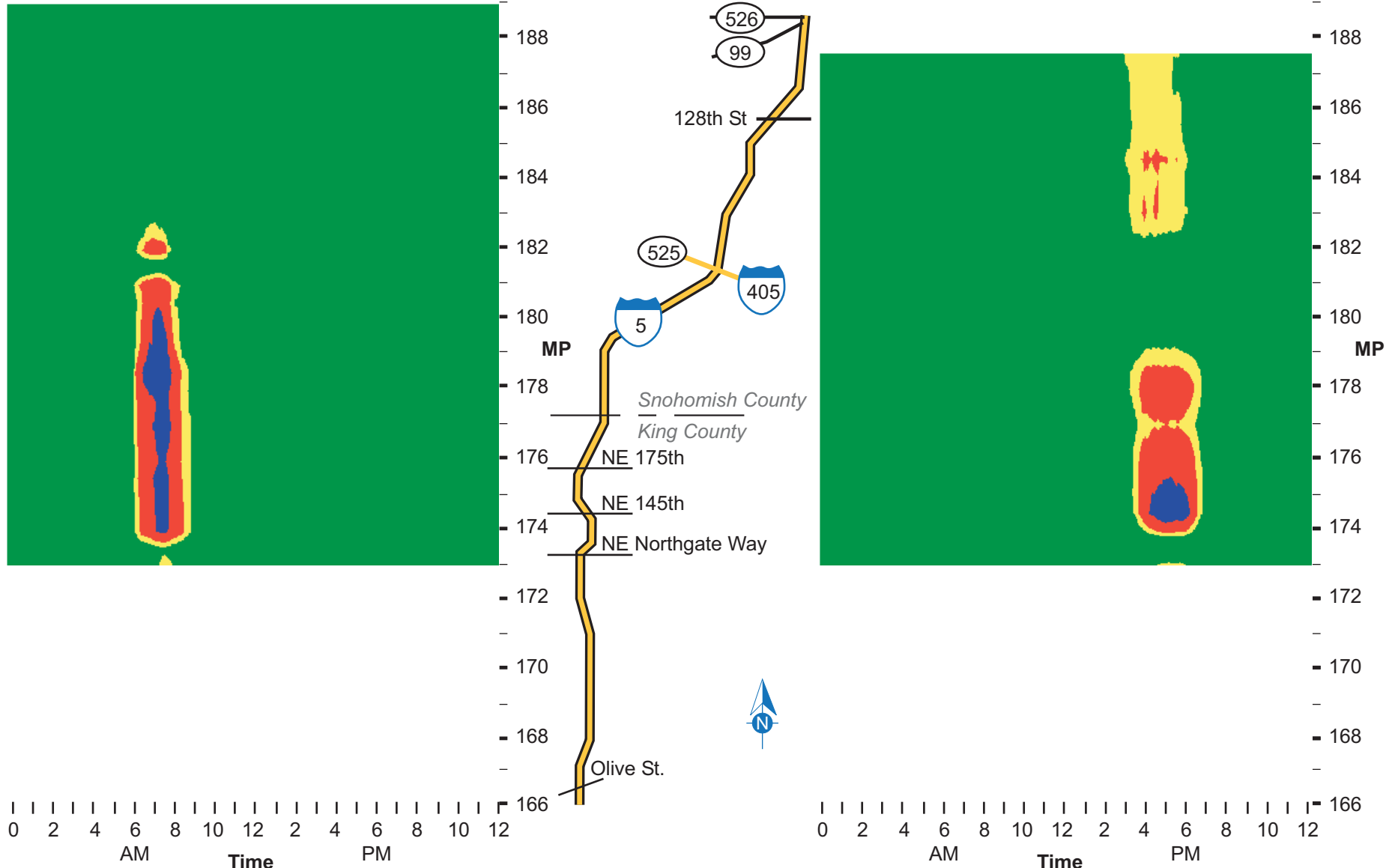


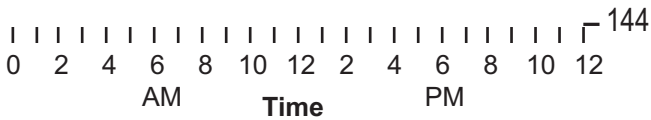
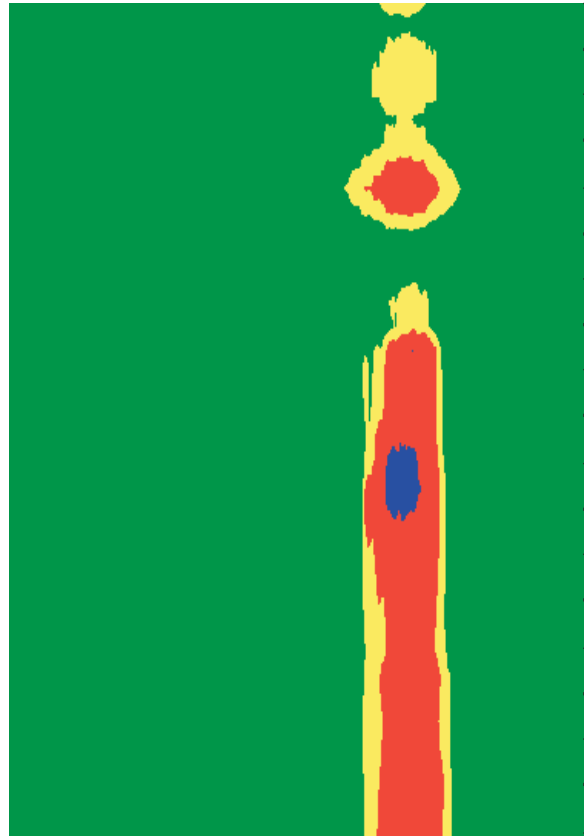
Southbound

Northbound

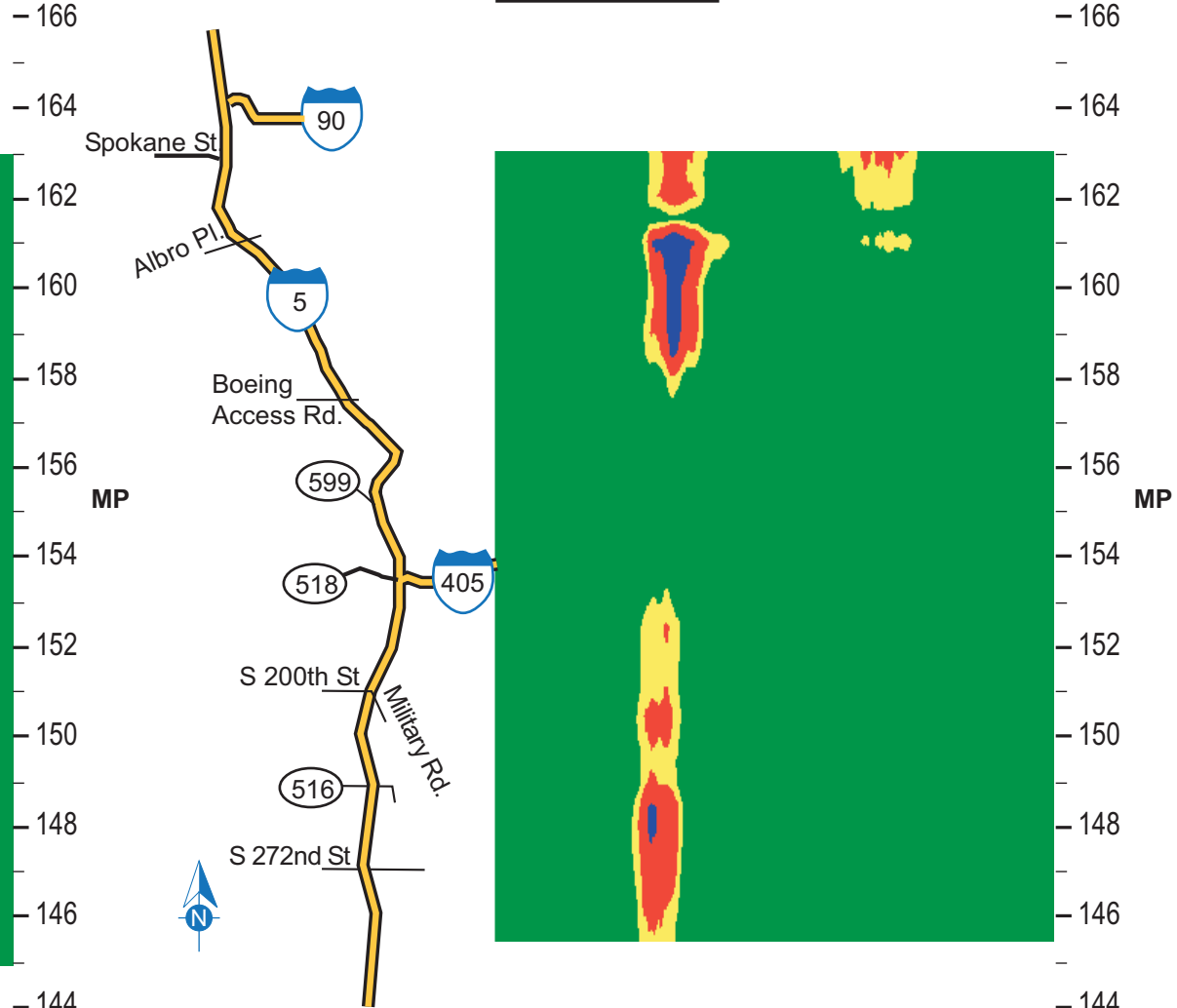
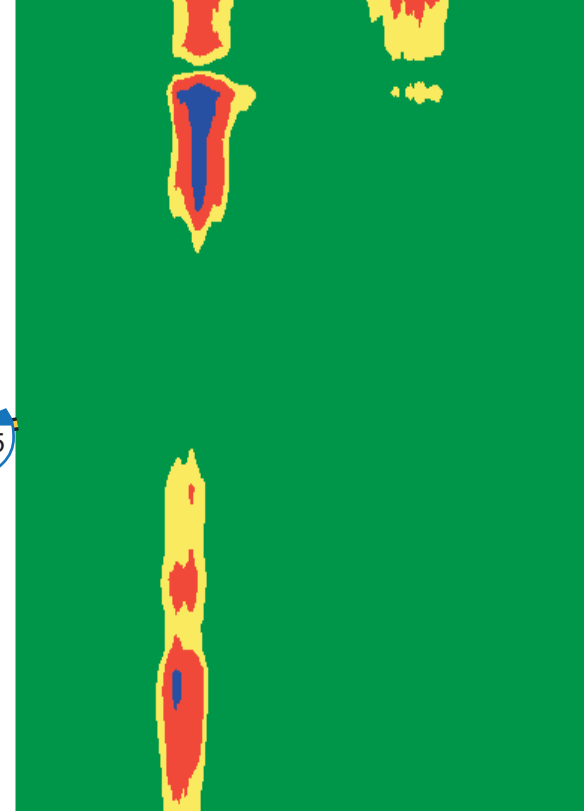


	Uncongested, near speed limit		Restricted movement but near speed limit		More heavily congested, 45 - 55 mph		Very congested, unstable flow
---	-------------------------------	---	--	---	-------------------------------------	---	-------------------------------

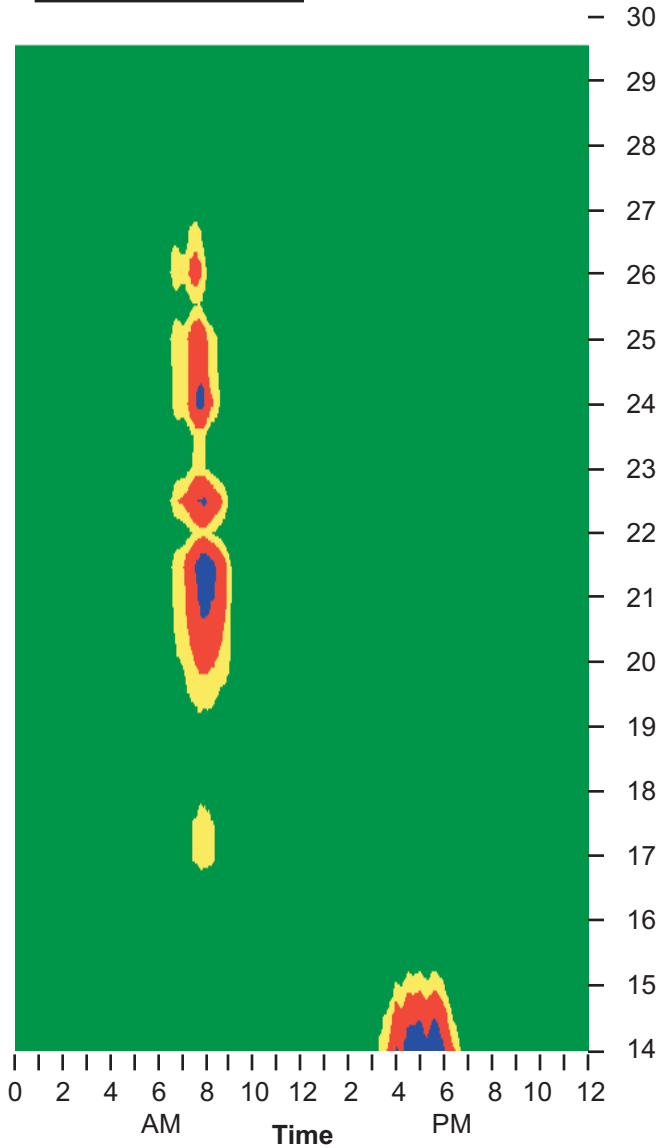
Southbound



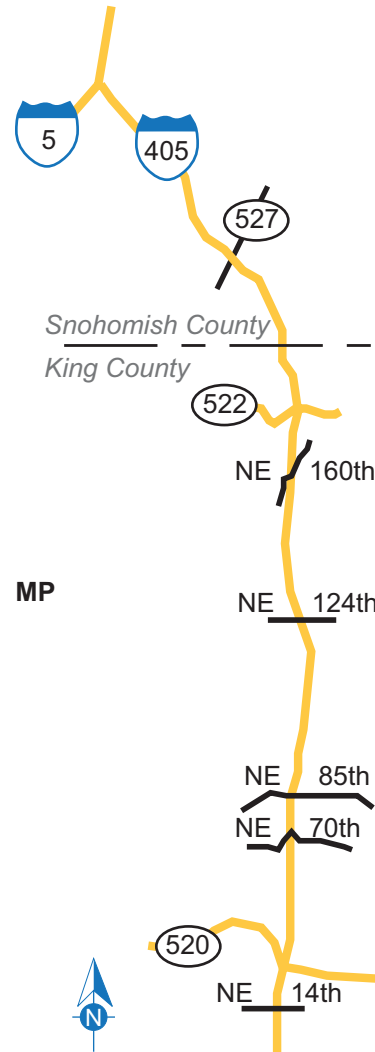
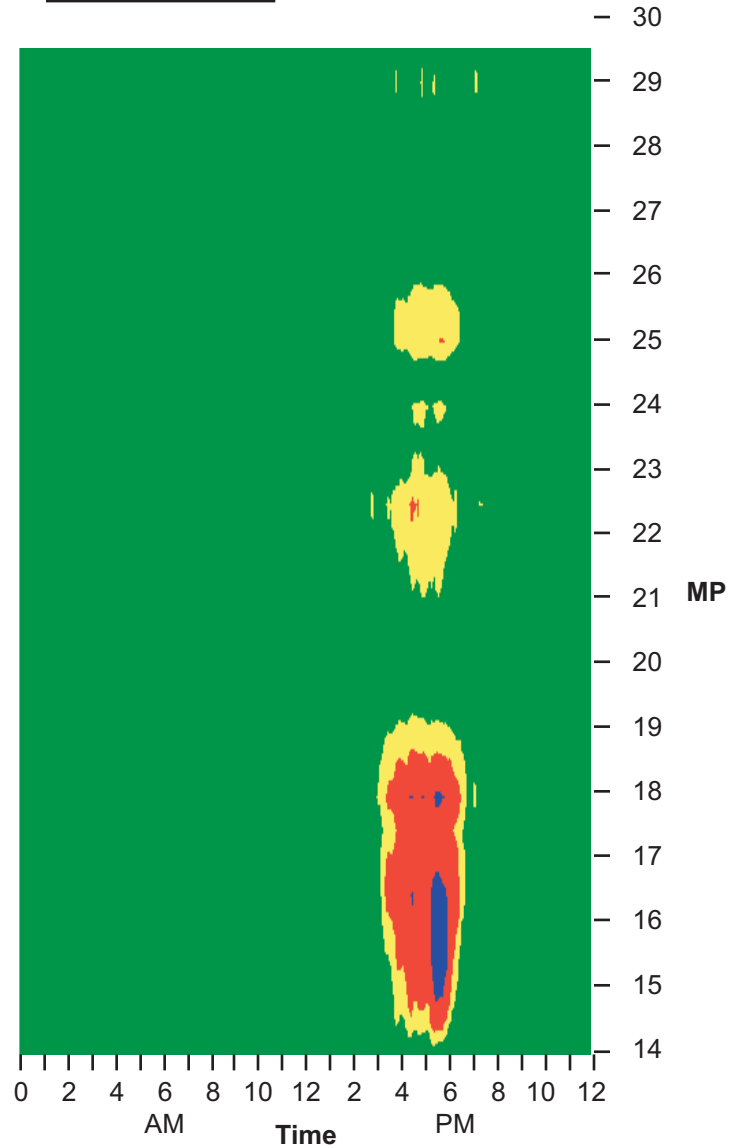
Northbound



Southbound



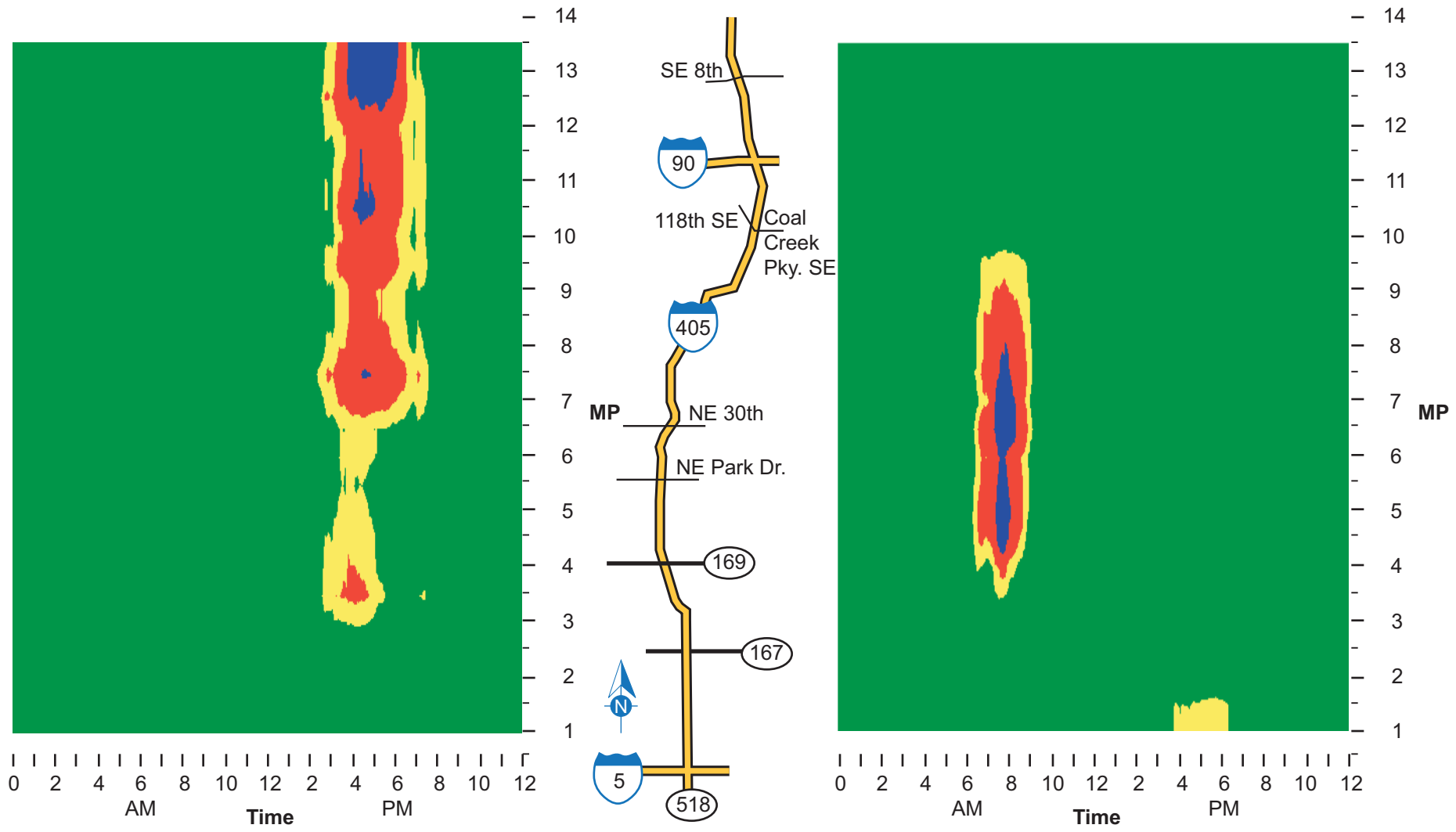
Northbound

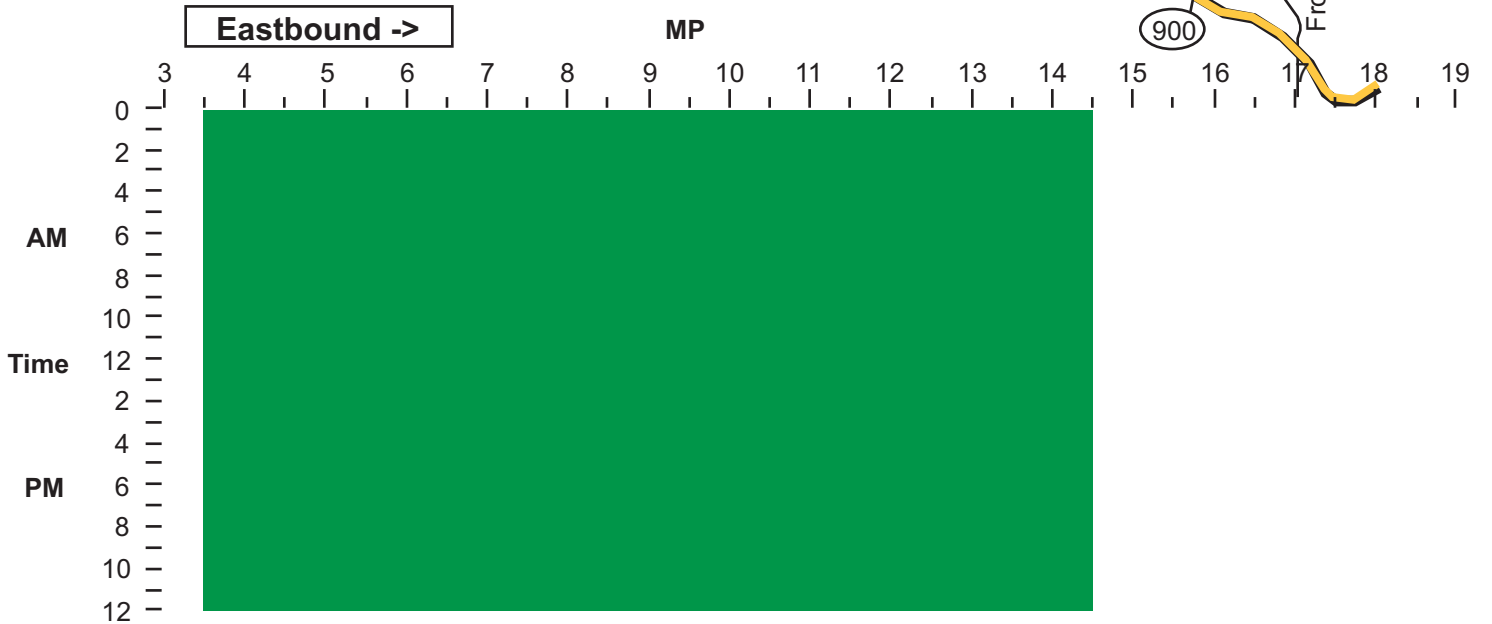
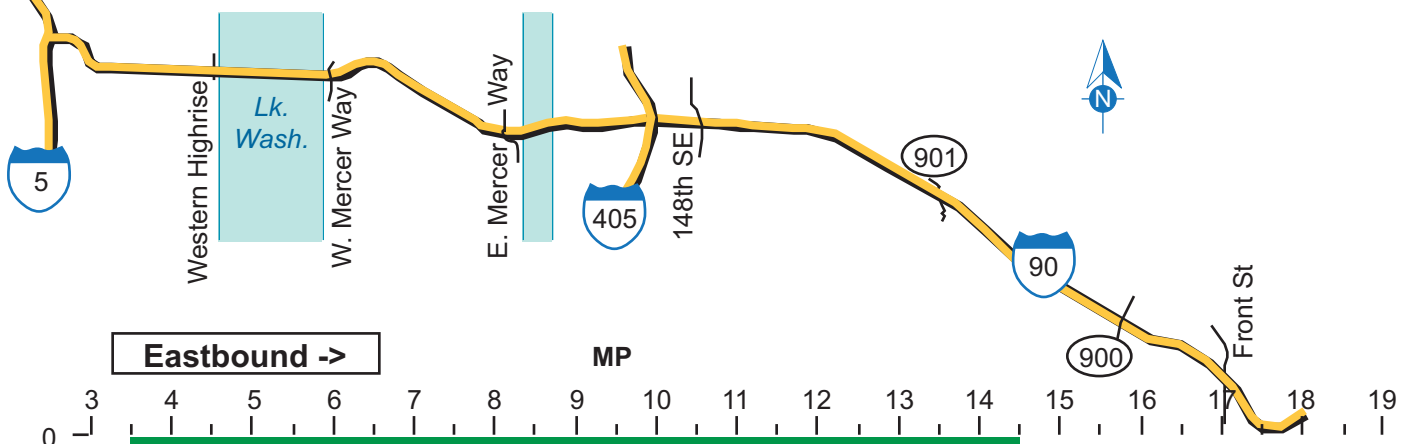
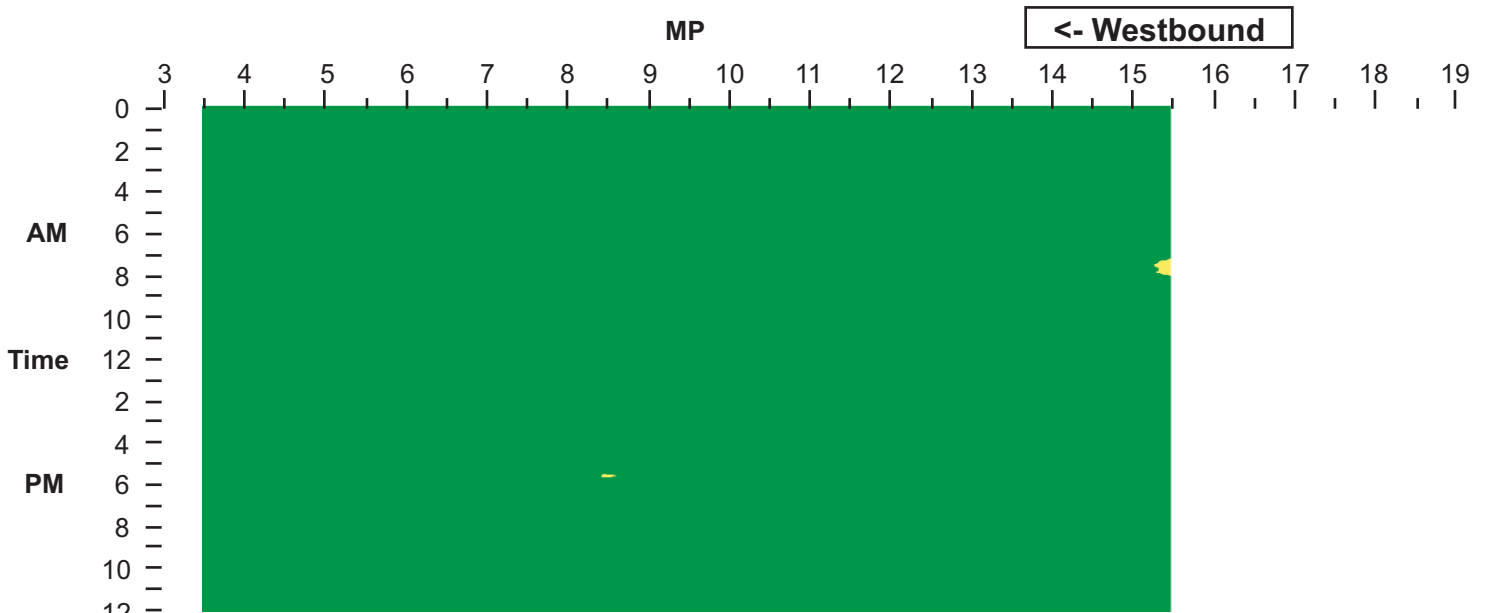


Uncongested, near speed limit	Restricted movement but near speed limit	More heavily congested, 45 - 55 mph	Very congested, unstable flow
-------------------------------	--	-------------------------------------	-------------------------------

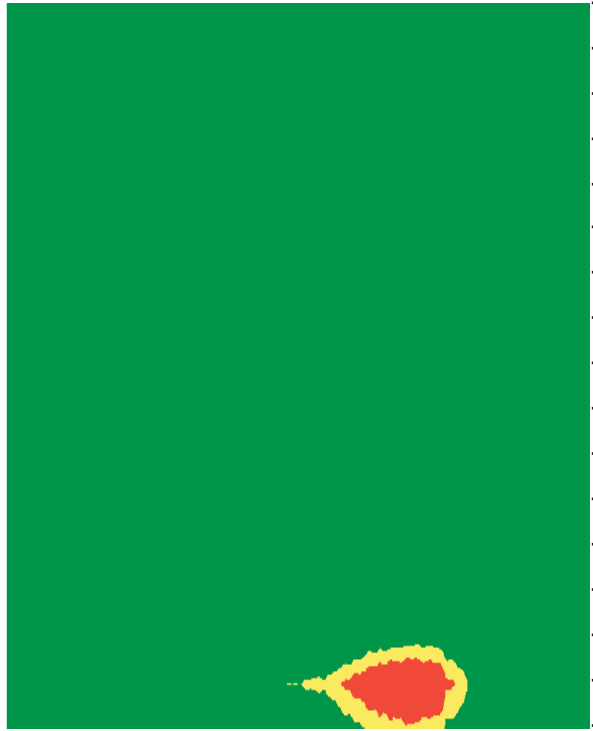
Southbound

Northbound

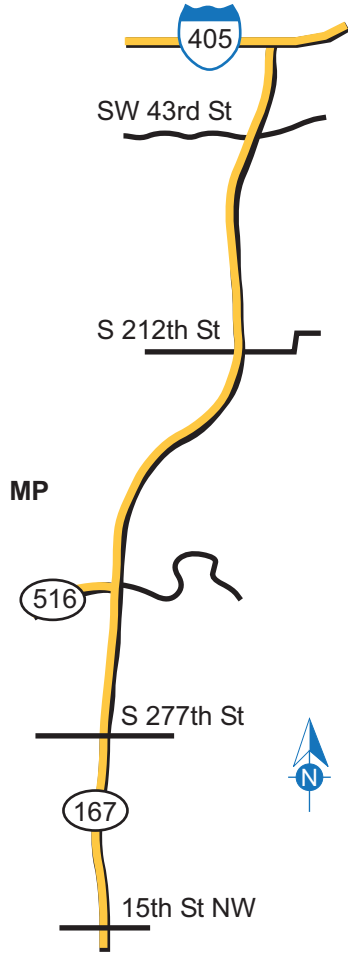
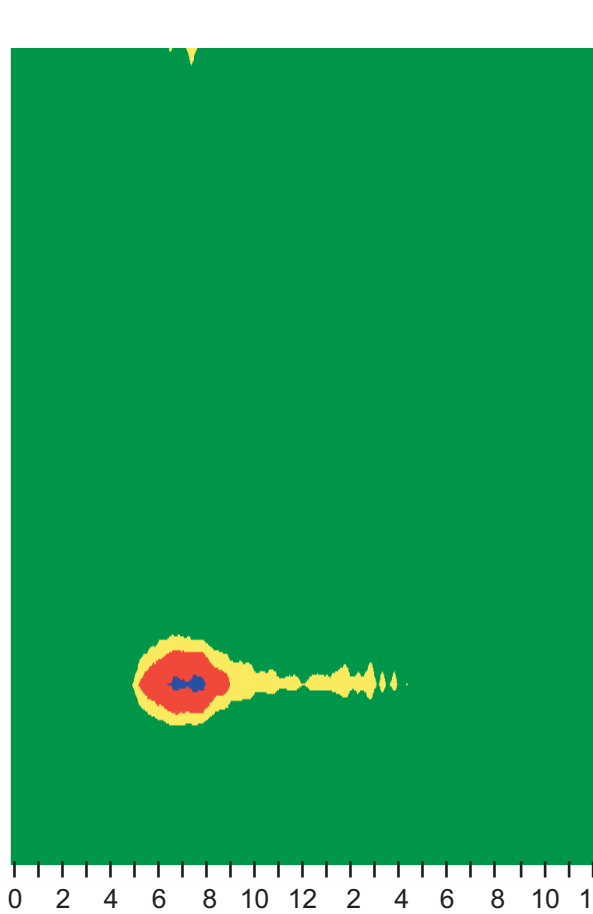




Southbound



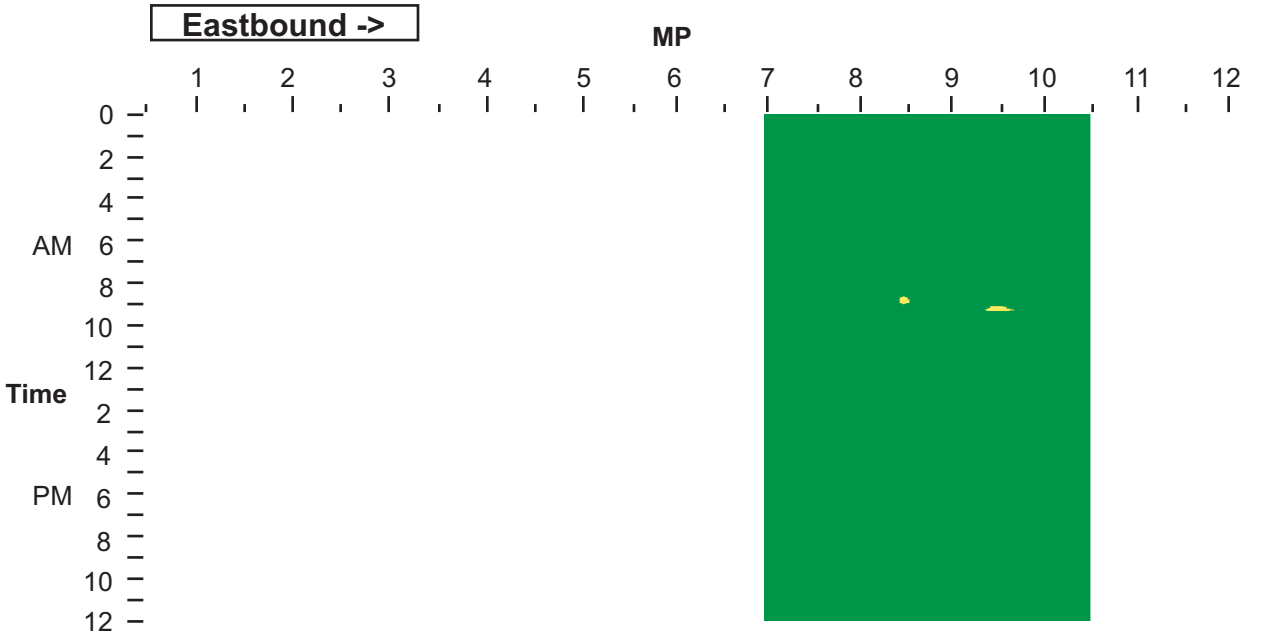
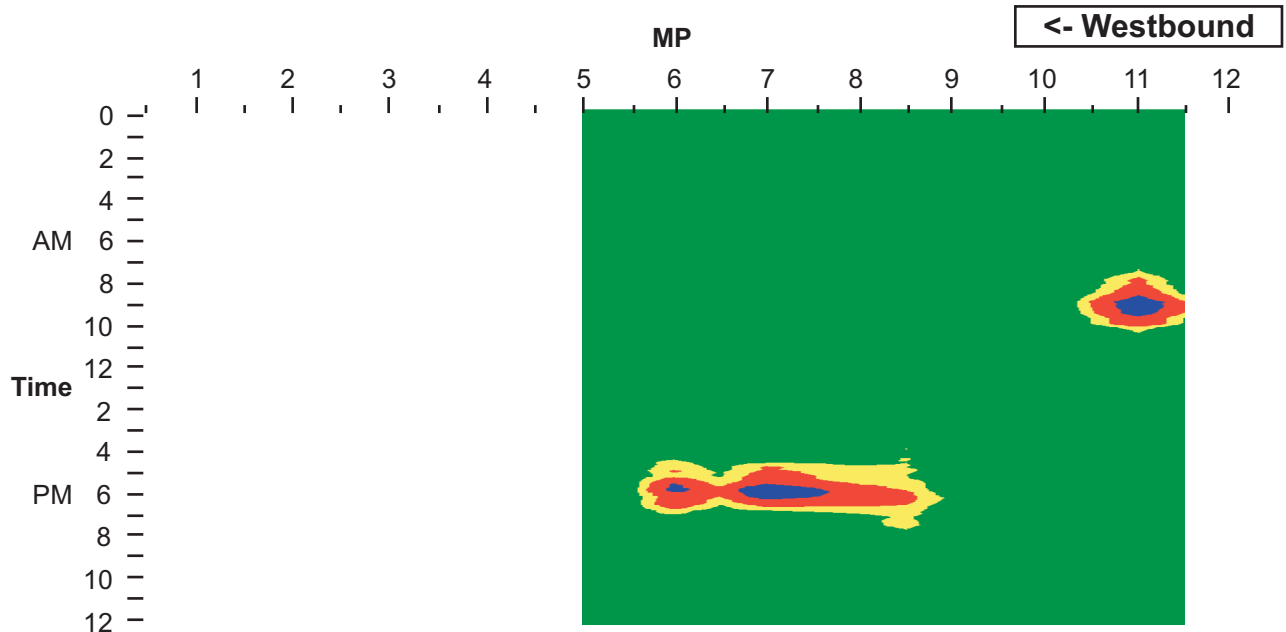
Northbound



0 2 4 6 8 10 12 2 4 6 8 10 12
AM Time PM

0 2 4 6 8 10 12 2 4 6 8 10 12
AM Time PM

 Uncongested, near speed limit	 Restricted movement but near speed limit	 More heavily congested, 45 - 55 mph	 Very congested, unstable flow
---	--	---	---



Uncongested, near speed limit	Restricted movement but near speed limit	More heavily congested, 45 - 55 mph	Very congested, 45 mph or less
-------------------------------	--	-------------------------------------	--------------------------------