

HEALTH AND SAFETY EVACUATION PLAN

UNIVERSITY DISTRICT BUILDING SUITE 345

Evacuation Procedures

Upon identification of an emergency requiring evacuation, individuals should proceed to exit the building following the evacuation routes posted by the front door to the suite. The floor warden is responsible for walking through the entire office to ensure that everyone has left the building and that any persons with disabilities have been accounted for and secured in an area of refuge.

Evacuation Assembly Point

The evacuation assembly point for Community-Campus Partnerships for Health is the public parking lot located on 12th Avenue NE and north of NE 45th Street (please see following map for detail).

Method for Accounting of Staff, Students, Visitors

Occupants should report to staff, who will take attendance from prepared rosters of faculty, staff and students who have regular working hours in the University District Building, Suite 345. The group managers will report back to the floor warden.

Areas of Refuge for Mobility-Impaired Occupants

Mobility impaired persons will be positioned at the top of the stairwells, for evacuation by emergency personnel.

Location of First Aid Kits

First aid kits can be found in Community-Campus Partnerships for Health front room under the table that holds shelves for food, next to the refrigerator.

Individuals with First Aid/CPR Certification

Janell Blackmer, Suite 400 616-9414

Contact Information for Health & Safety Person(s)

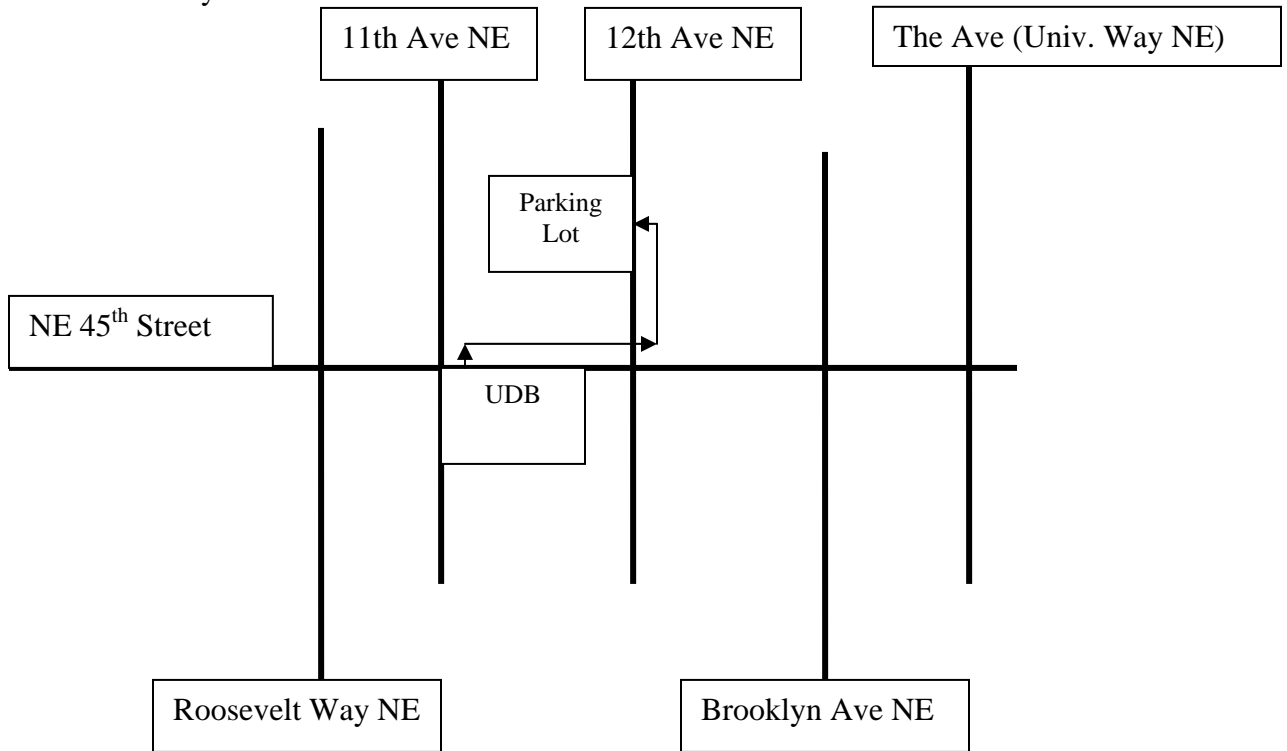
Floor Warden (Suite 345)

Annika Sgambelluri 616-3472

“Back Up” Floor Warden (Suite 345)

In the event that Annika is not in the office Cate Clegg will be the Floor Warden
Cate Clegg 543-8010

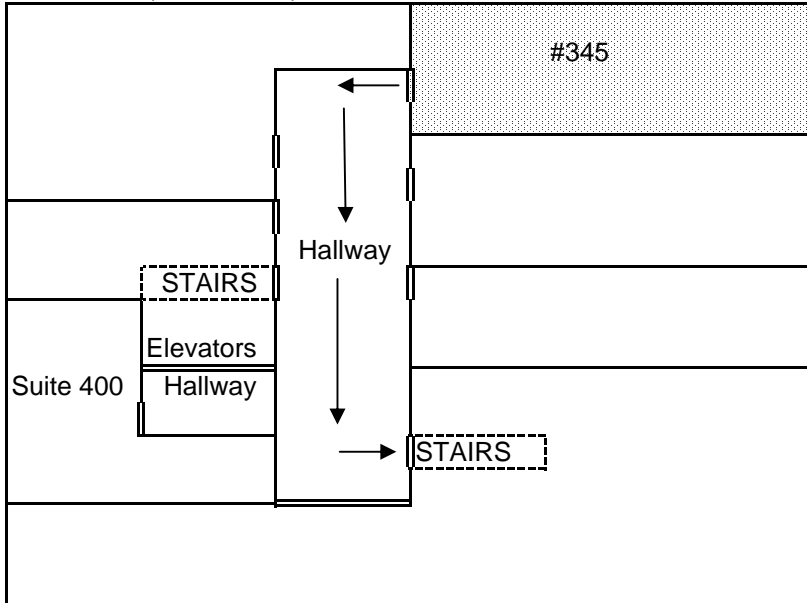
Evacuation Assembly Point



Evacuation Route

University District Building, Suite 345

ROUTE 1 (Main Route)



ROUTE 2 (Alternate Route)

