

45th Street Plaza Building
Suite 405
Emergency Evacuation Plan (updated 11/30/07).

Evacuation Procedures

In the event of an earthquake:

Drop, Cover, Hold. When shaking has stopped, get ready to leave the building. Take valuables and emergency supplies. Take account of the condition for co-workers and the building. Assist others. Leave building via evacuation route: take the stairwell next to the elevators to the 45th Street level. Leave via the Front Door Exit to the Evacuation Assembly Point (EAP).

In the event of a fire:

Take valuables and leave building immediately via evacuation route. Look around for and assist co-workers and visitors.

Evacuation Assembly Point (EAP)

Take the stairwell next to the elevators down to the 45th Street level. Proceed out of the front door, turn right onto 11th, and head to the far corner of the parking lot closest to 12th street, away from potentially flying glass.

Methods for Accounting for Staff, Students, and Visitors:

All employees and visitors must stay and be accounted for, or will be reported as missing. Evacuation warden checks employee list, checks with co-workers to determine who was present in the office. Check for injured personnel. Render first aid if required.

Areas of Refuge for Mobility-Impaired Occupants/Visitors

Please list specific individuals who are mobility-impaired in your area and briefly describe the plan for each

N/A

First Aid Kits

There is an orange first aid kit in the supply area, in the overhead shelves to the left of the Xerox machine.

First Aid/CPR Certified Staff Members:

Naomi Wilson (First Aid/CPR)

Anne Turner, MD (Advanced Life Support Services)

Health and Safety Contact Person(s)

Renee Risher, Evacuation Warden for Suite 405 (221-7444)

Rita Keating, Alternate (221-6666)

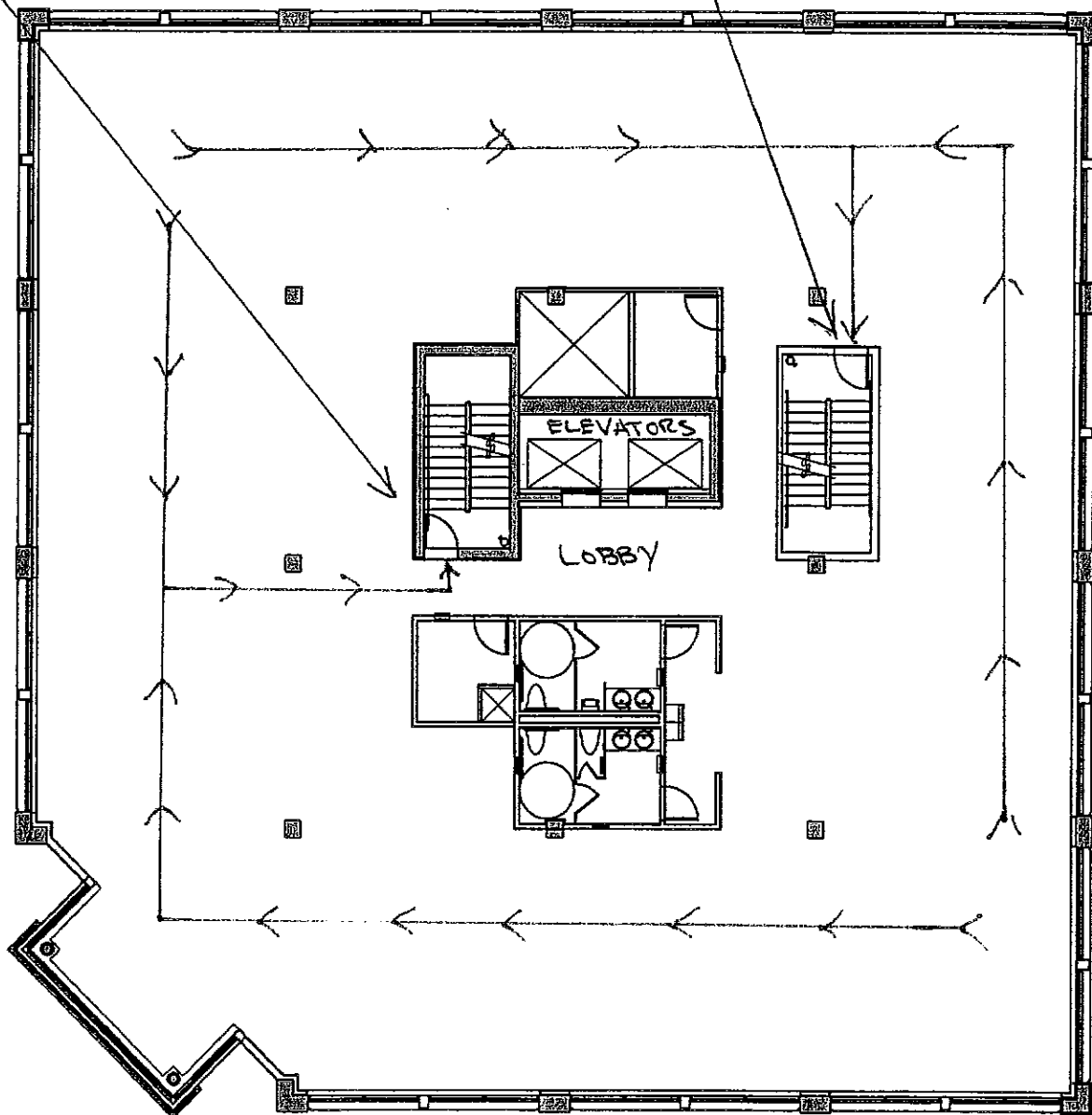
Ginger McMahan, Administrator, Health Services (616-2928)

NORTH

WEST FRONT DOOR Exit

EAST ALLEY Exit

11TH AVE NE



NE 45TH STREET

FLOOR PLAN SOUTH

1 1/16"=1'-0"

150-EXIT5.dwg, 04/30/01 02:59:04 PM, John T...

Mulvanny Architects: All rights reserved. No part of this document may be reproduced in any form or by any means without permission in writing from Mulvanny Architects.



45th St Plaza
1100NE 45TH ST

PROJECT NUMBER: 00-1550

PROJECT MANAGER: John Trieger

65 Eastlake Ave. E, #201
206-621-7572 Fax: 206-621-7582 www.mulvanny.com
MULVANNY ARCHITECTS - PROFESSIONAL SERVICE CORPORATION

NORTH



* ASSEMBLY POINT
12TH AVE UNDER X
SHOPPERS PARK
SIGN

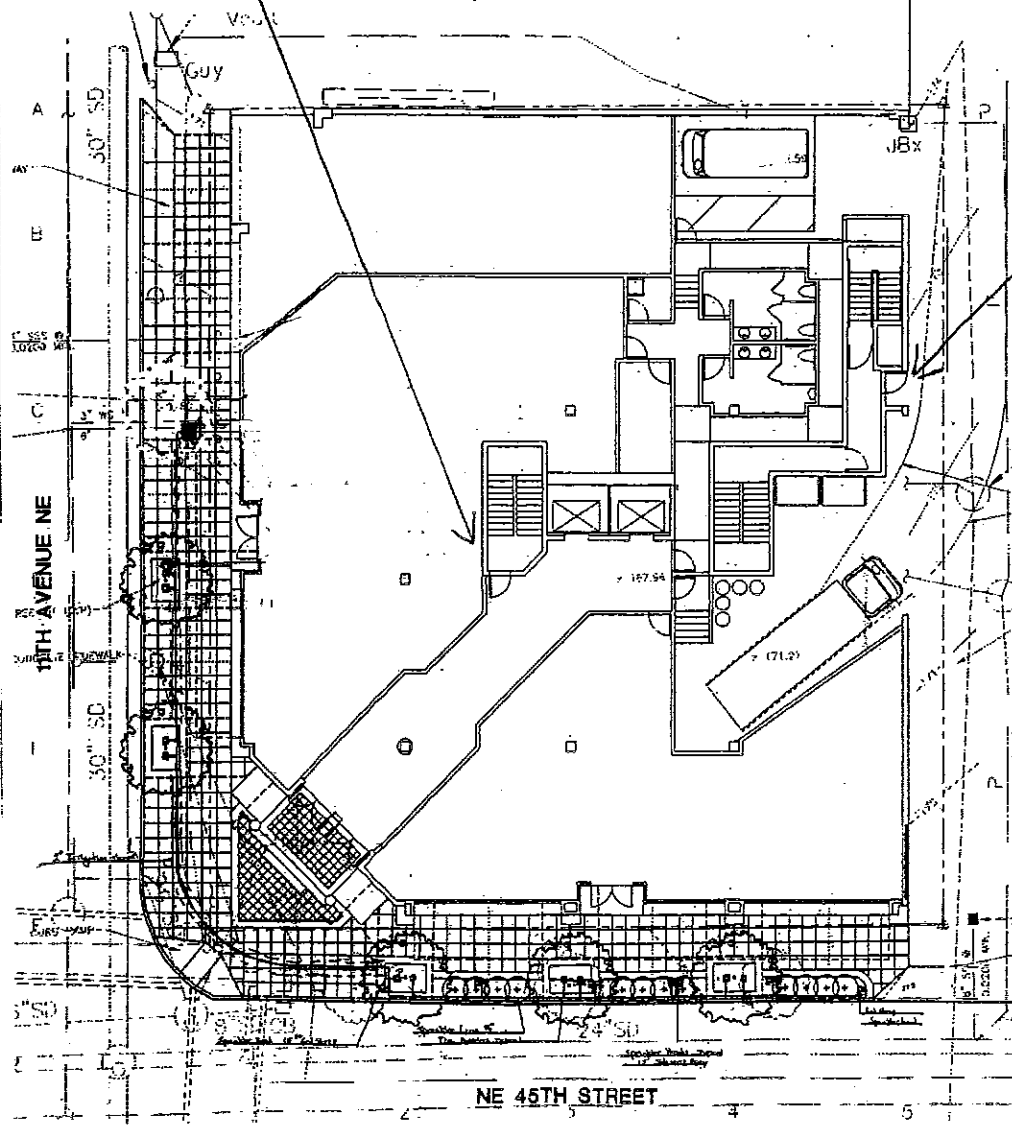
PRIVATE PARKING LOT

ALLEY

* WEST EXIT
TO LOBBY

* EAST EXIT
TO ALLEY

OLD CITY GREEN



NE 45TH STREET