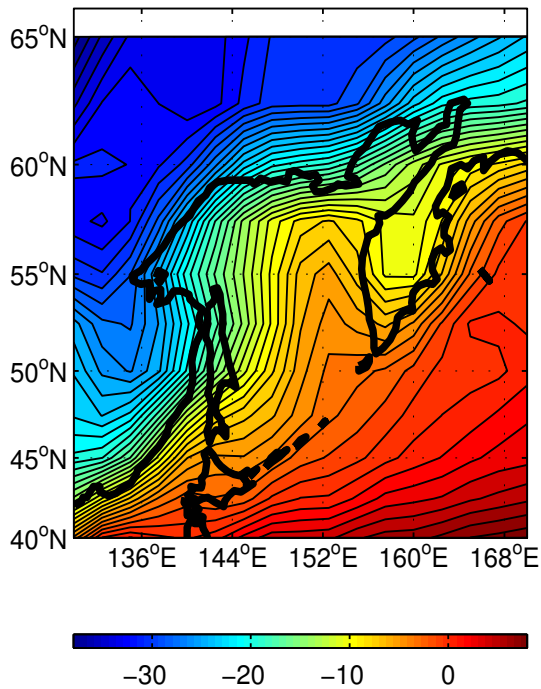
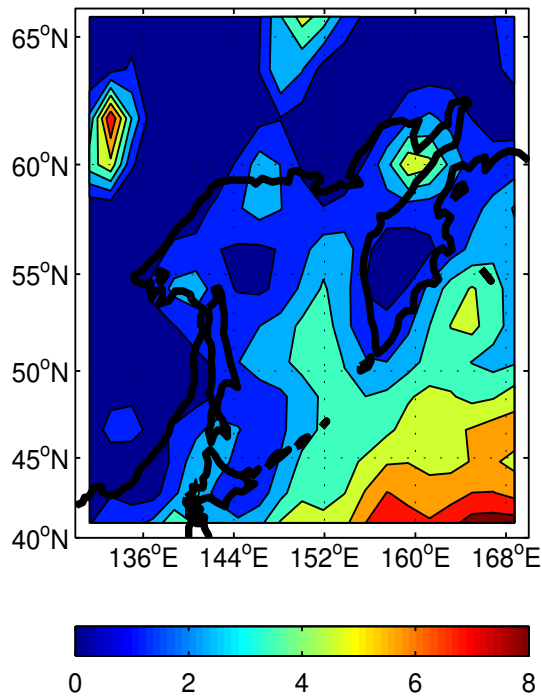


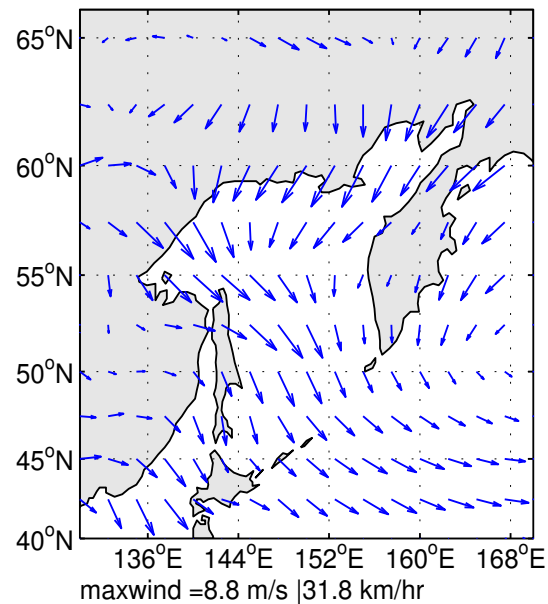
Jan Average Temp C 1 deg/contour



Jan Precip rate – mm/day 1 mm/contour

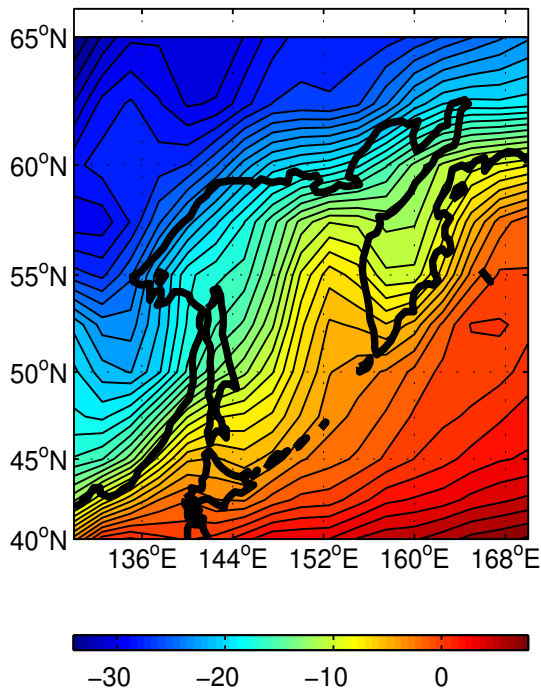


Jan Wind Field – m/s

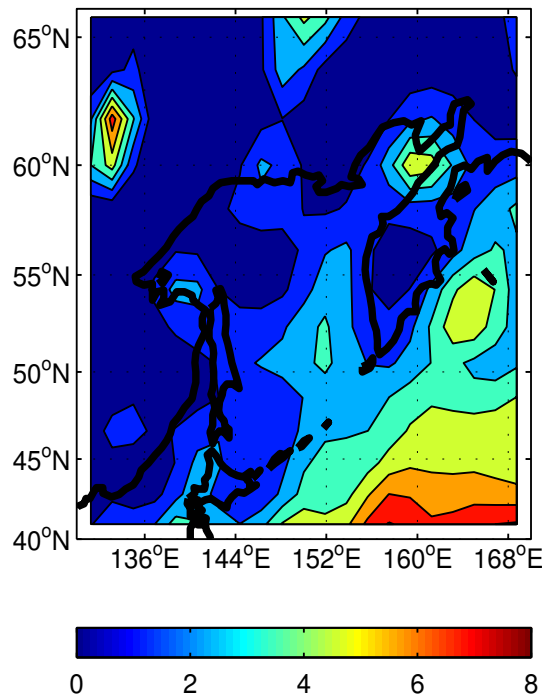


**JAN**

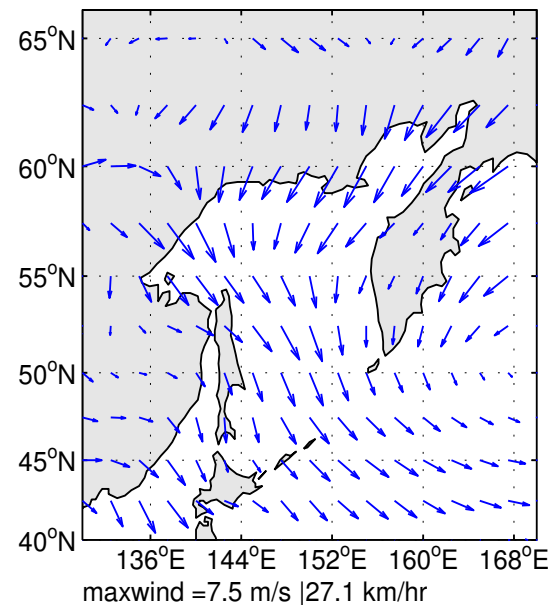
Feb Average Temp C 1 deg/contour



Feb Precip rate – mm/day 1 mm/contour



Feb Wind Field – m/s

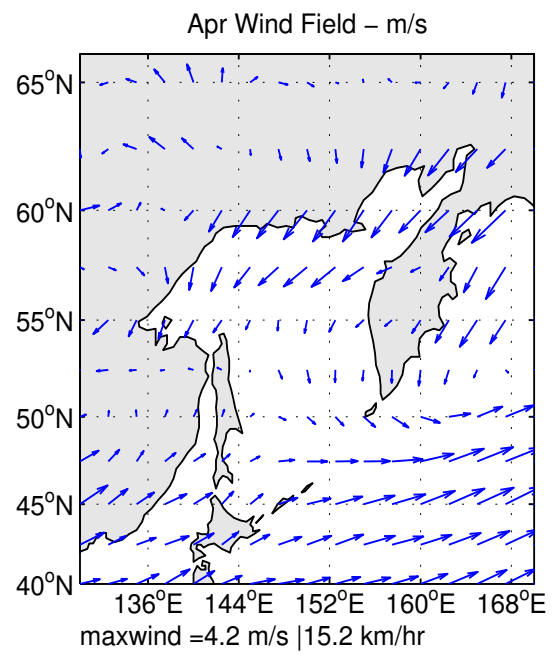
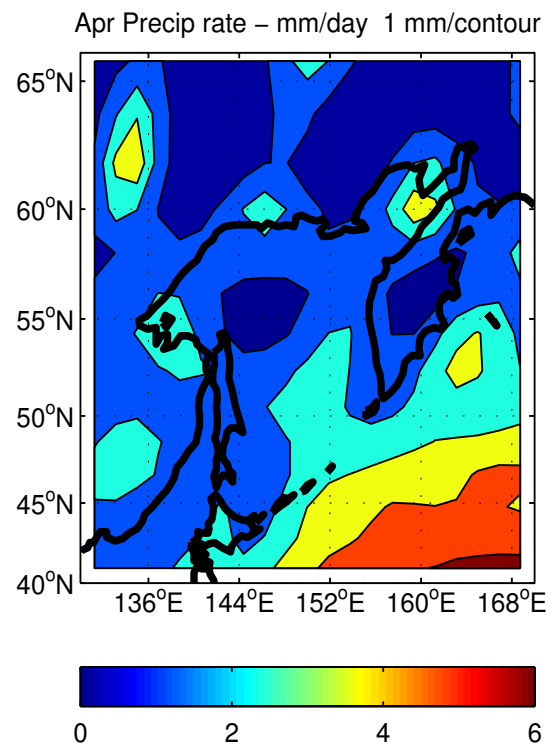
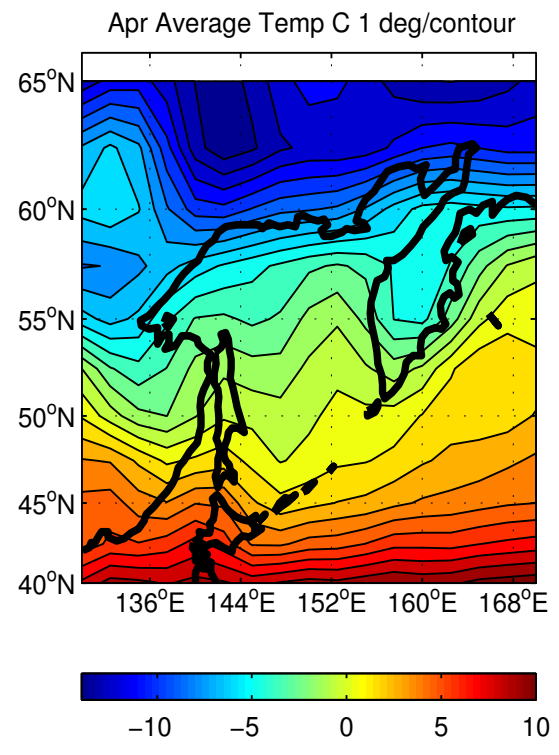
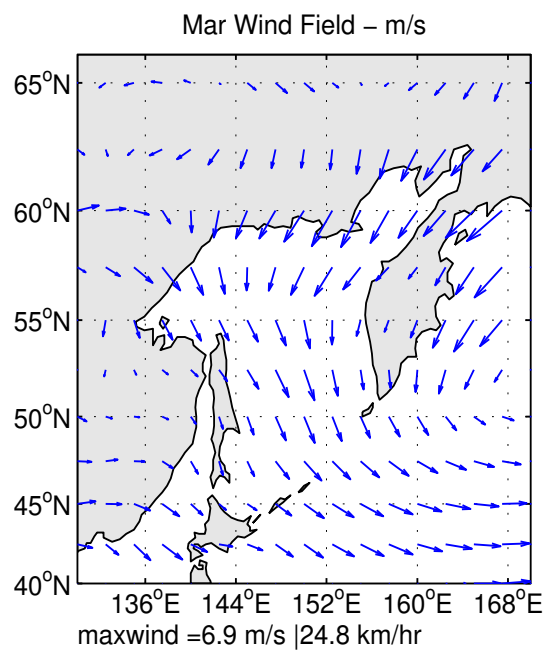
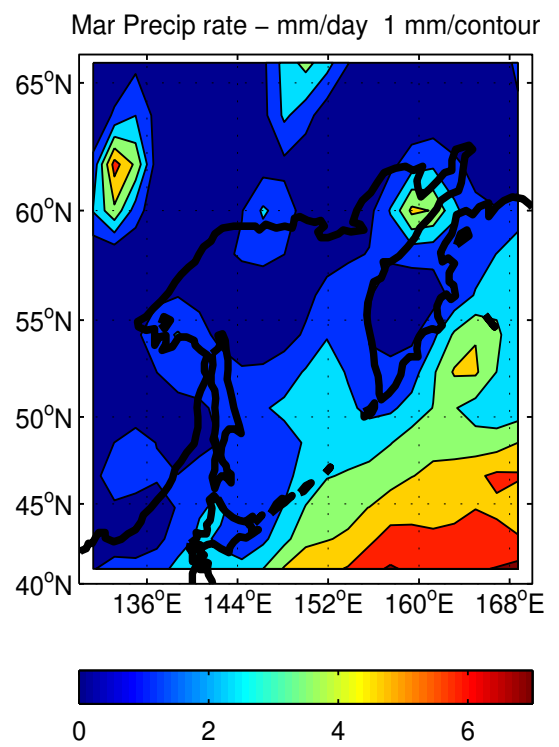
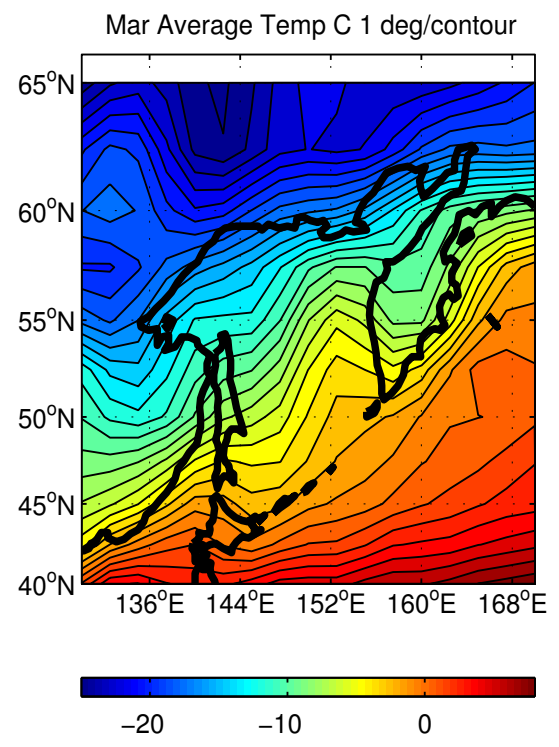


**FEB**

UW Kuril Islands Project Climatology Atlas, 1968-1996  
Data from NCEP Reanalysis data provided by the NOAA-CIRES Climate Diagnostics Center, Boulder, CO, USA  
<http://www.cdc.noaa.gov/cdc/reanalysis/reanalysis.shtml>; monthly long term avgs of surface air, prate, uwind, vwind

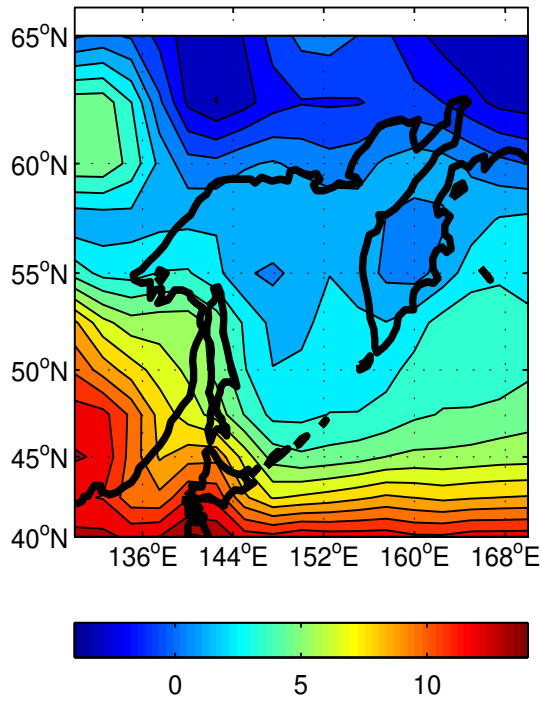
**MAR**

**APR**

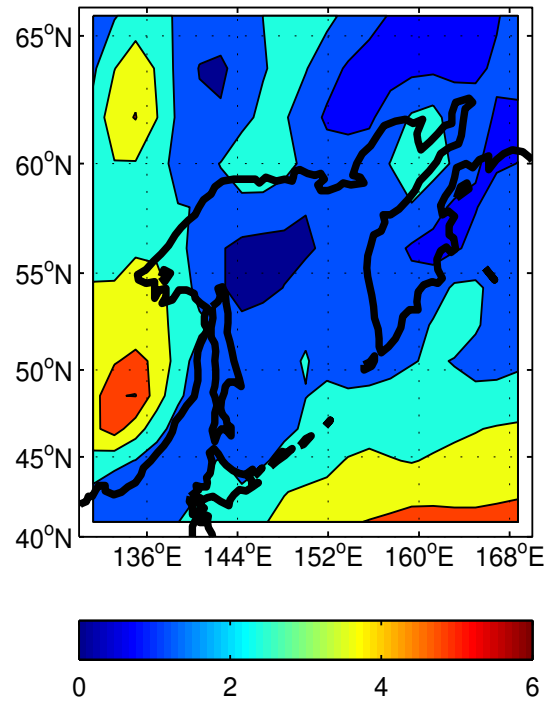


**MAY**

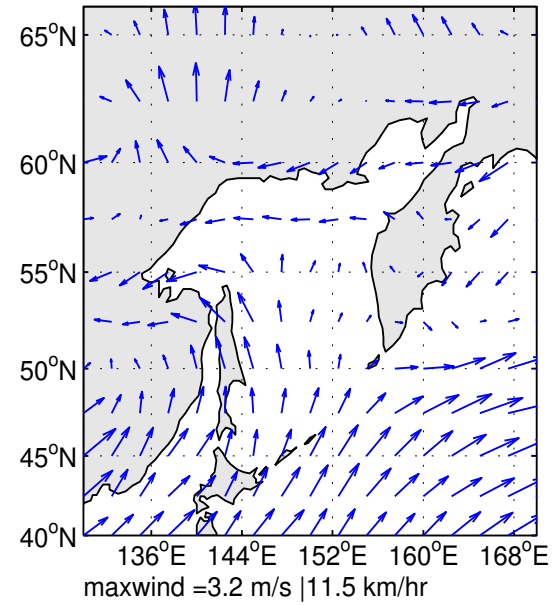
May Average Temp C 1 deg/contour



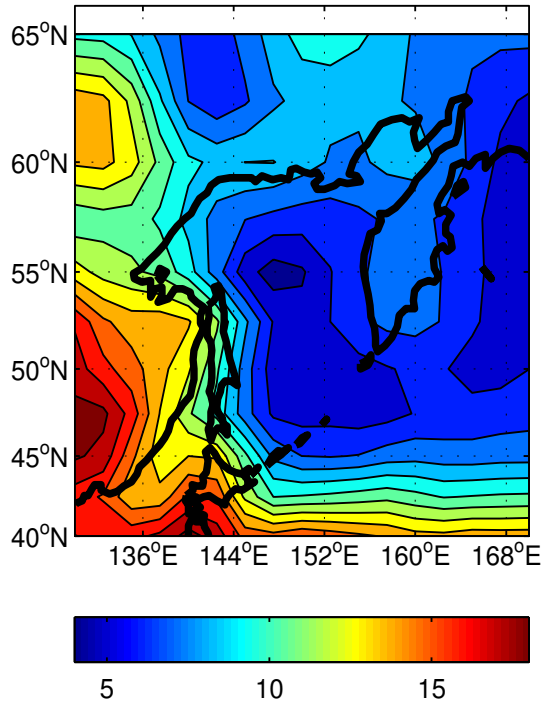
May Precip rate – mm/day 1 mm/contour



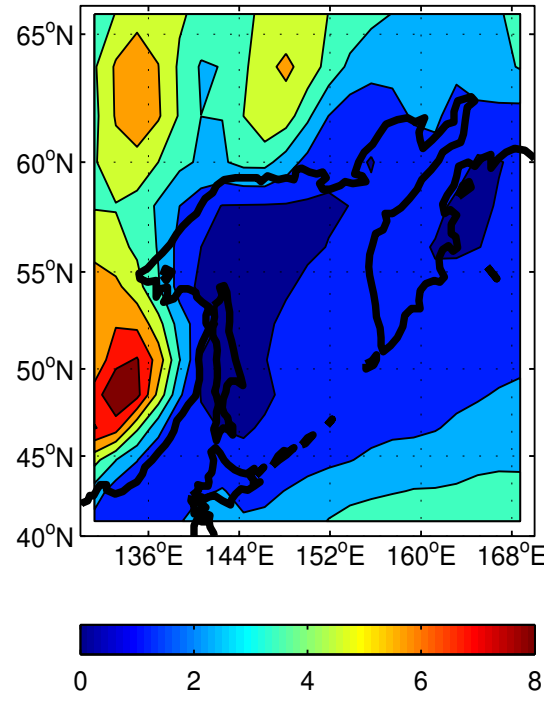
May Wind Field – m/s



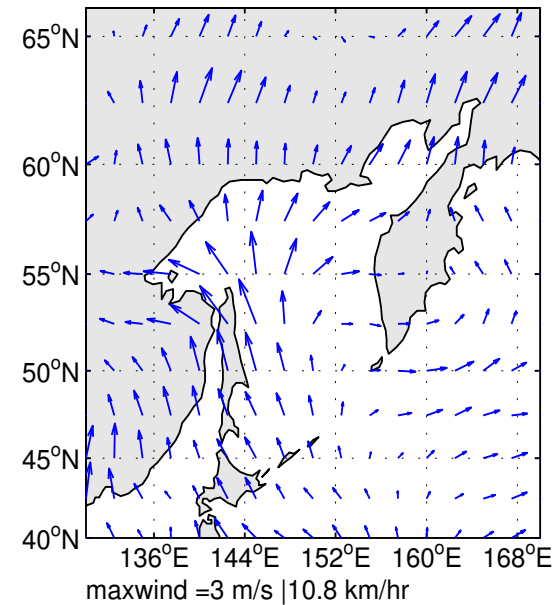
Jun Average Temp C 1 deg/contour



Jun Precip rate – mm/day 1 mm/contour



Jun Wind Field – m/s

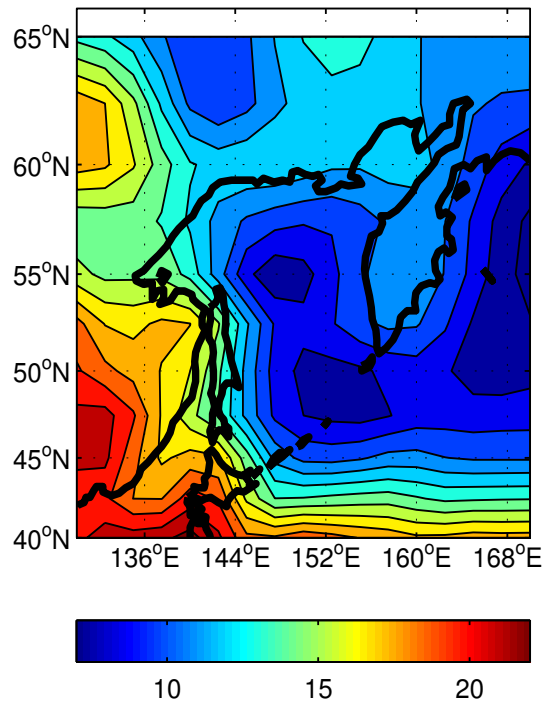


**JUN**

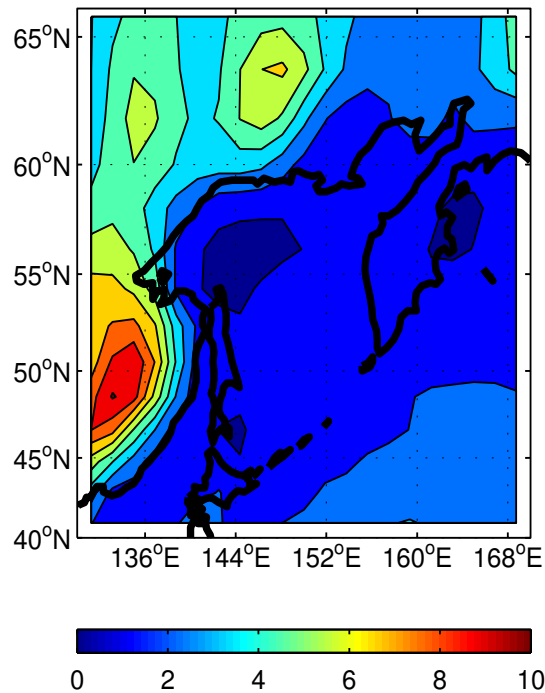
Data from NCEP Reanalysis data provided by the NOAA-CIRES Climate Diagnostics Center, Boulder, CO, USA  
<http://www.cdc.noaa.gov/cdc/reanalysis/reanalysis.shtml>; monthly long term avgs of surface air, prate, uwind, vwind

UW Kuril Islands Project Climatology Atlas, 1968-1996

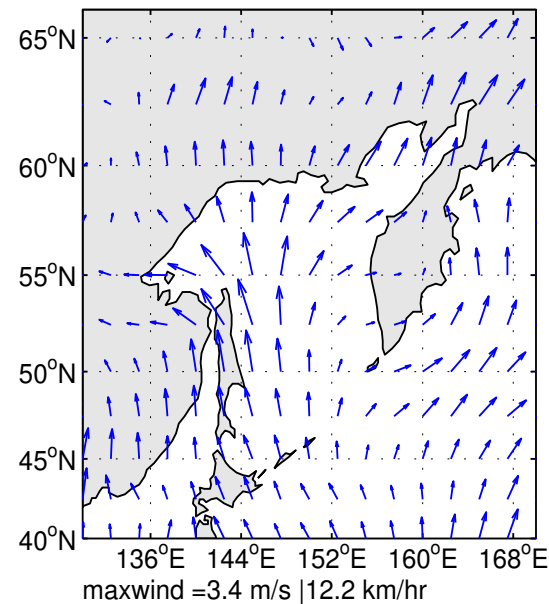
Jul Average Temp C 1 deg/contour



Jul Precip rate - mm/day 1 mm/contour

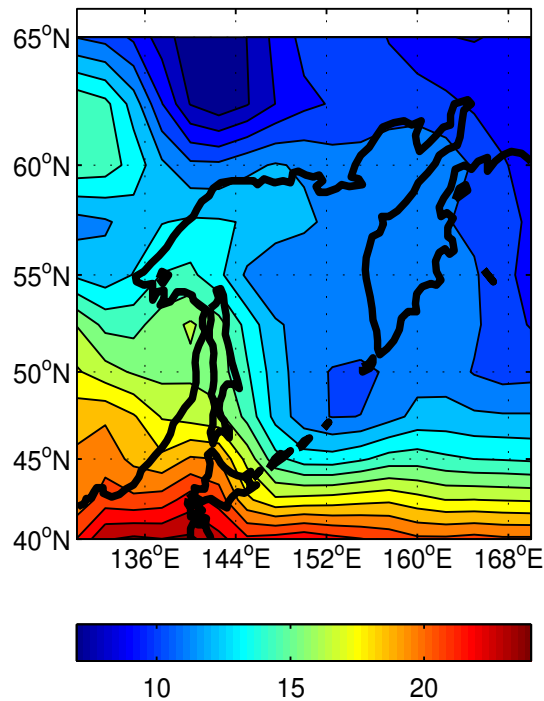


Jul Wind Field - m/s

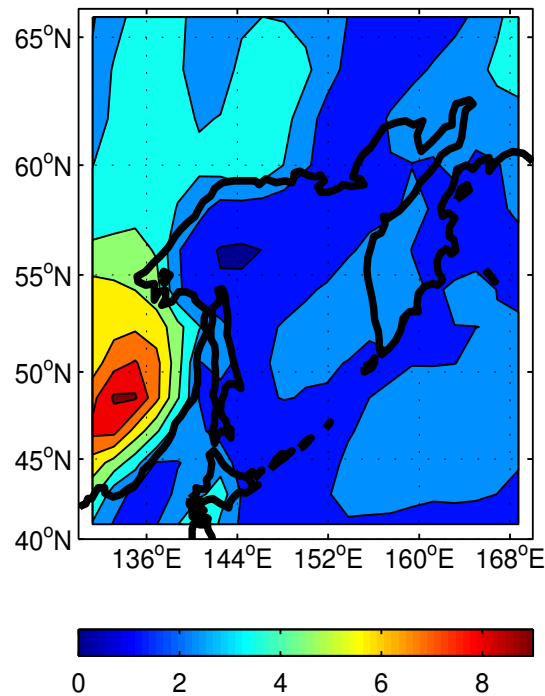


**JUL**

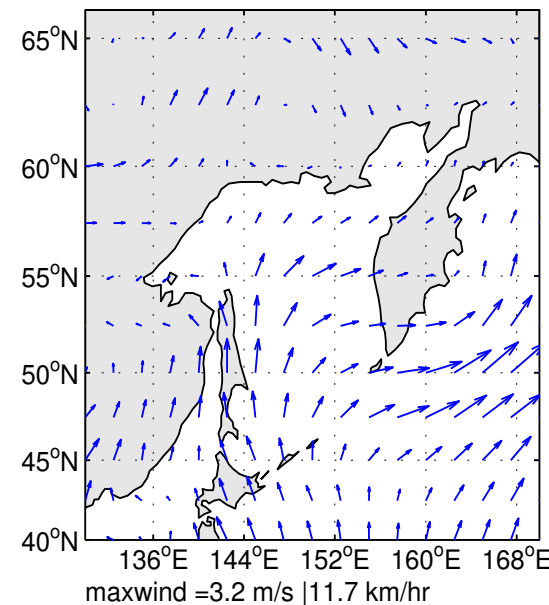
Aug Average Temp C 1 deg/contour



Aug Precip rate - mm/day 1 mm/contour



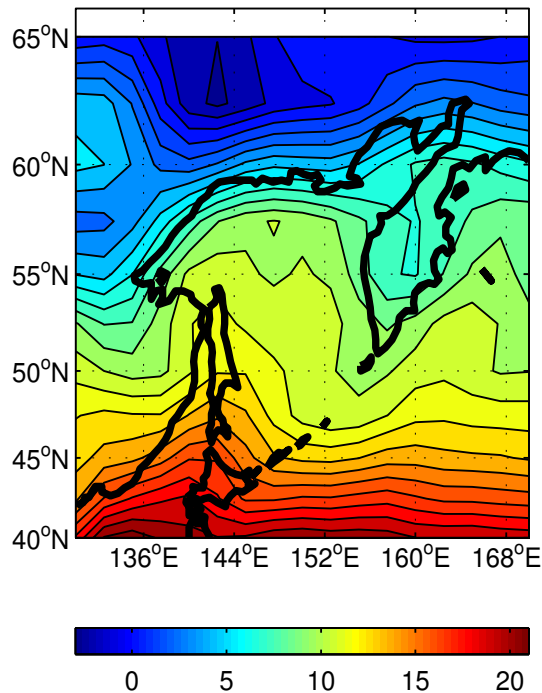
Aug Wind Field - m/s



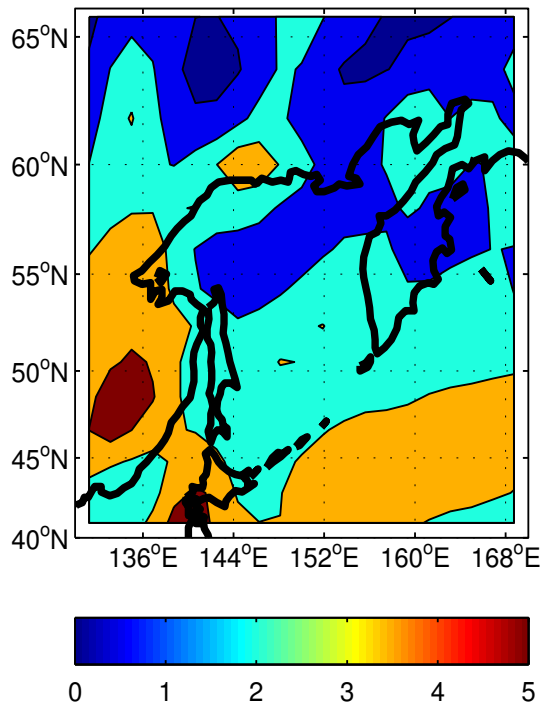
**AUG**



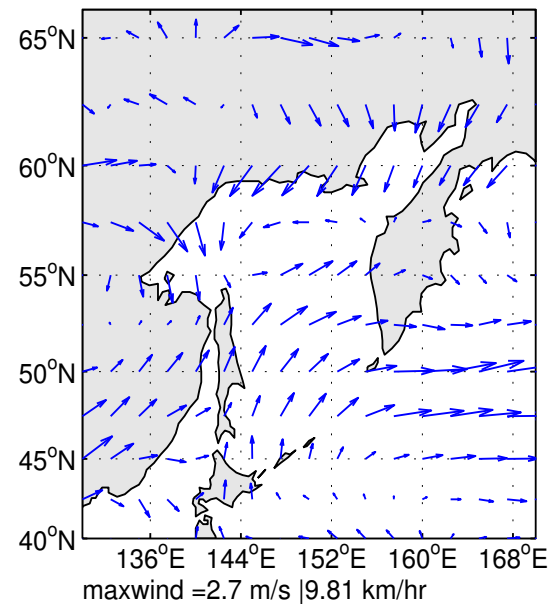
Sep Average Temp C 1 deg/contour



Sep Precip rate - mm/day 1 mm/contour

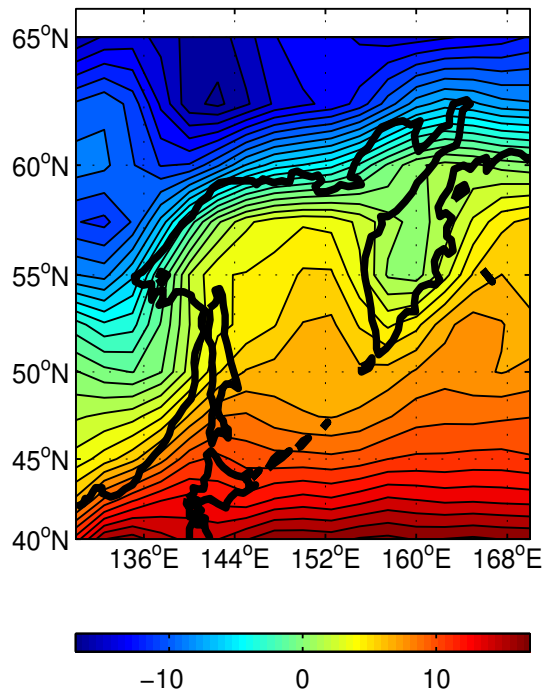


Sep Wind Field - m/s

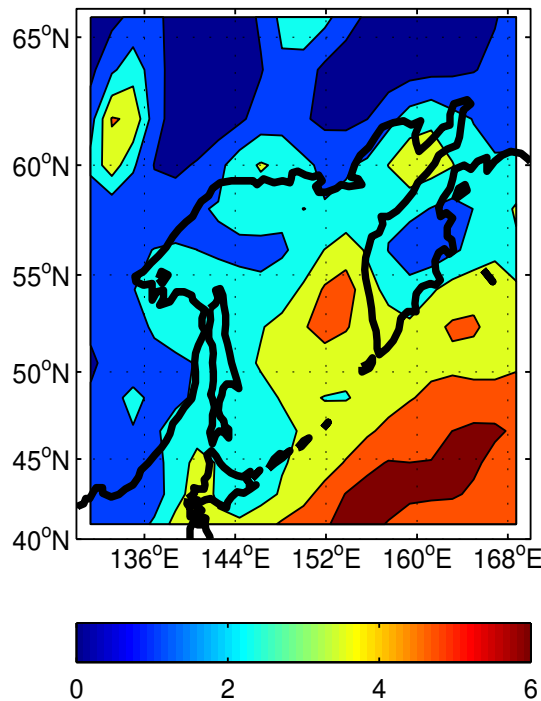


**SEP**

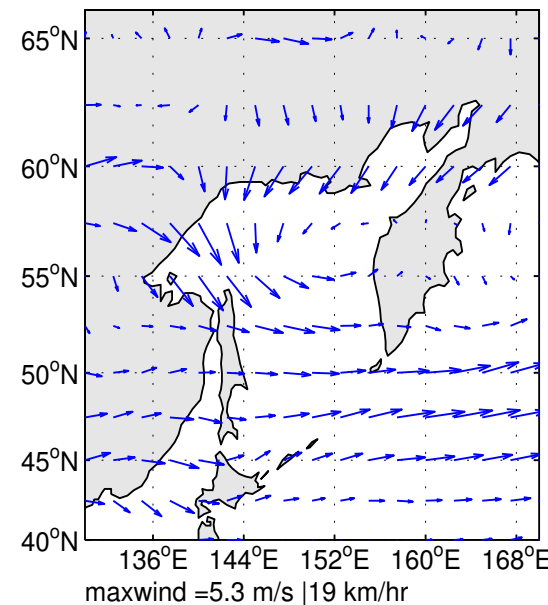
Oct Average Temp C 1 deg/contour



Oct Precip rate - mm/day 1 mm/contour



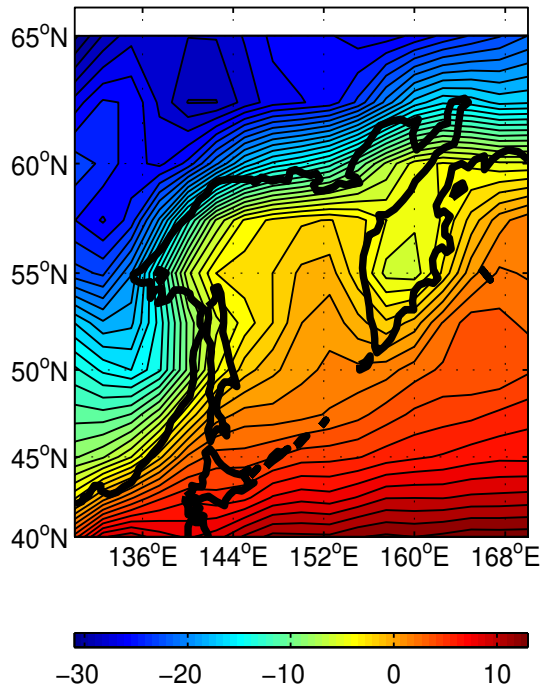
Oct Wind Field - m/s



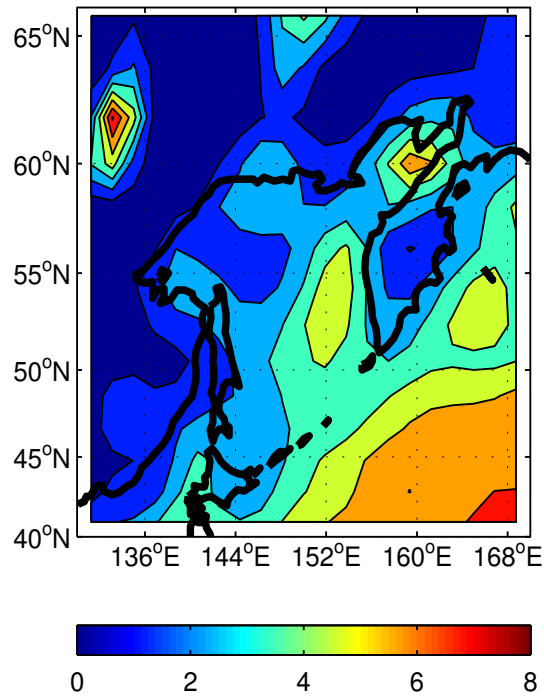
**OCT**

**NOV**

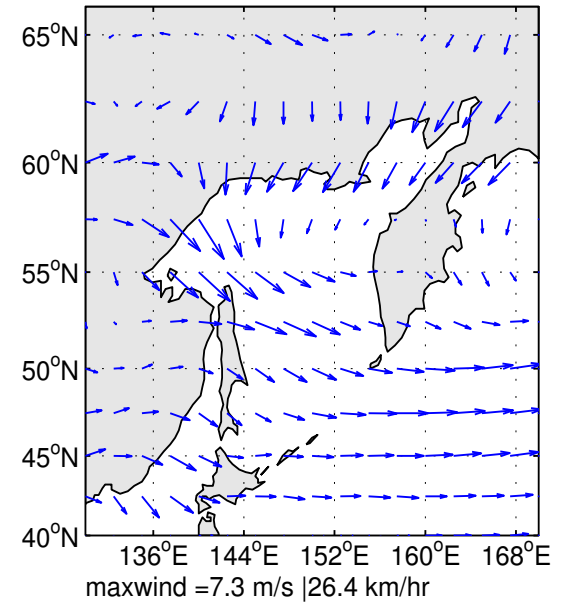
Nov Average Temp C 1 deg/contour



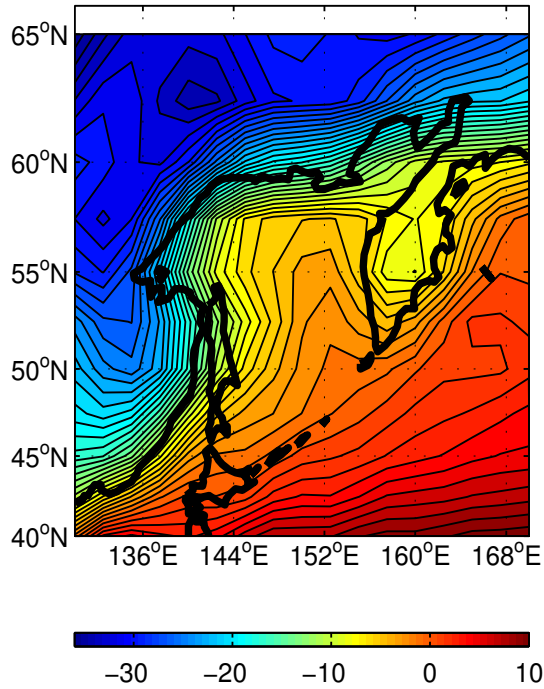
Nov Precip rate – mm/day 1 mm/contour



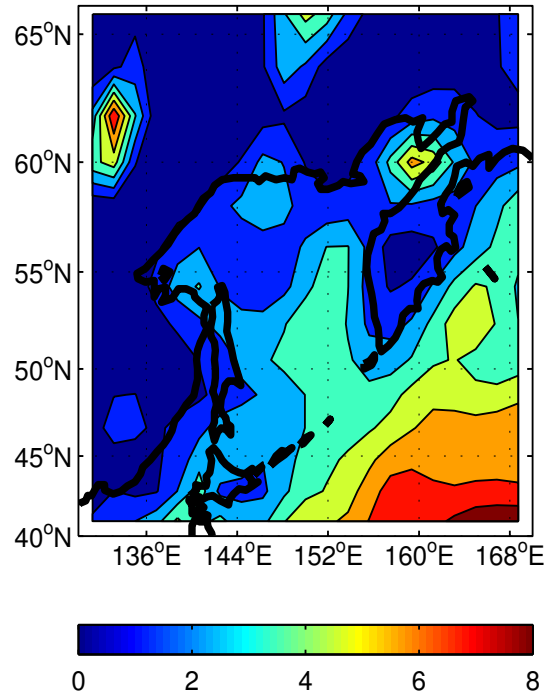
Nov Wind Field – m/s



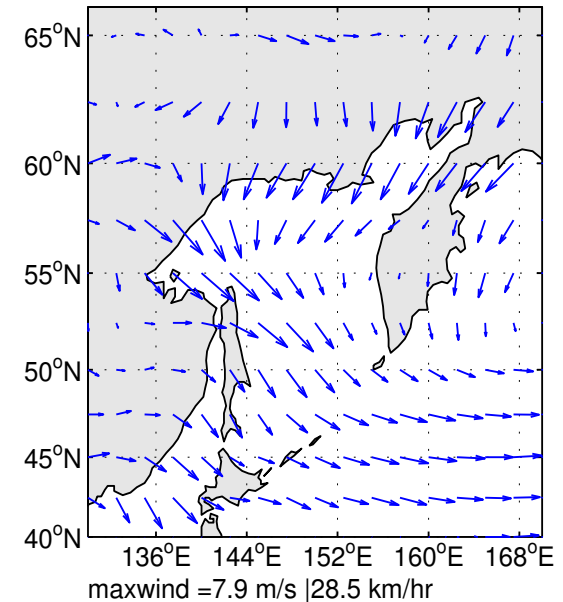
Dec Average Temp C 1 deg/contour



Dec Precip rate – mm/day 1 mm/contour



Dec Wind Field – m/s



**DEC**