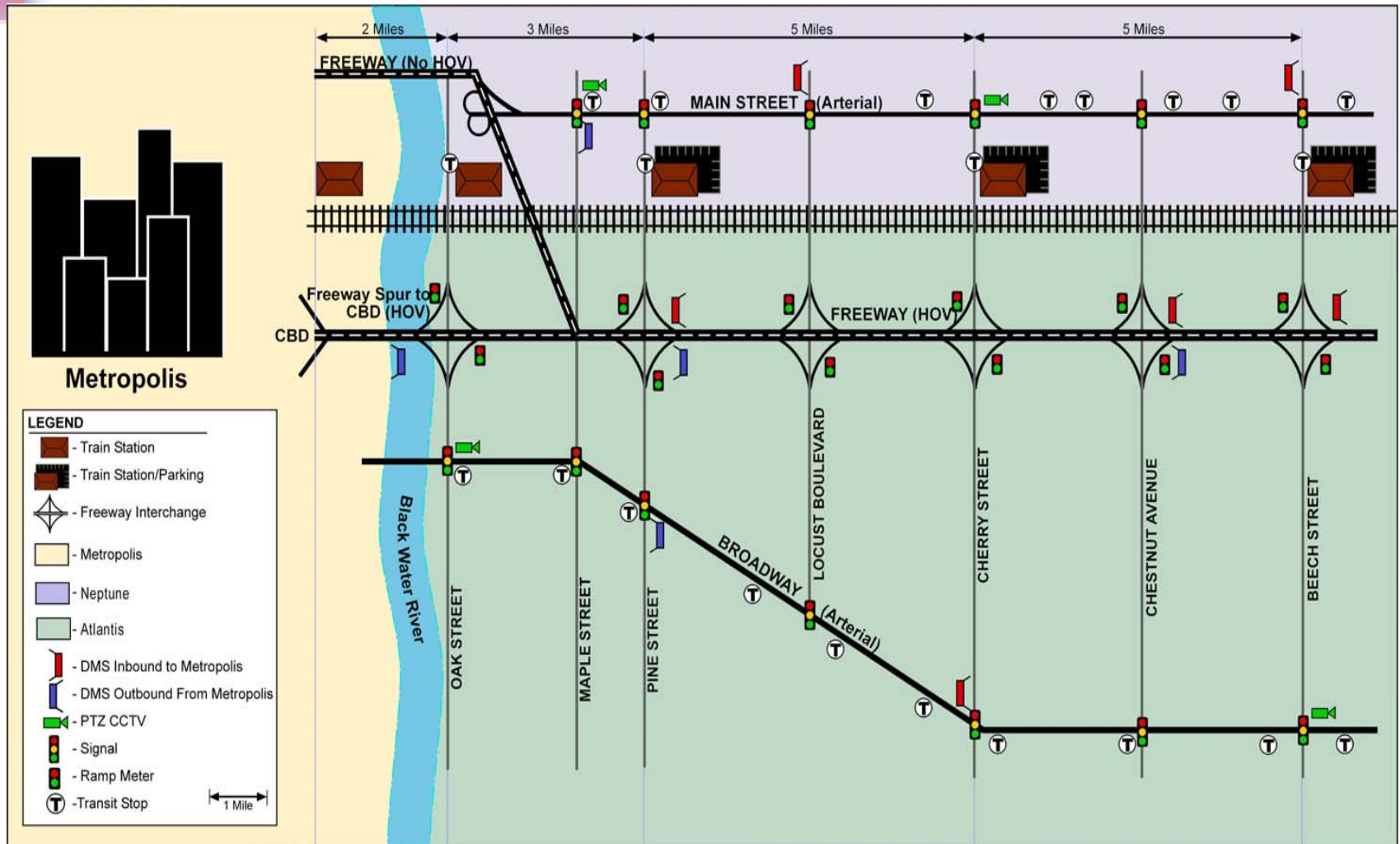


# Integrated Corridor Management initiative

- What is ICMS
- USDOT leads 8 sites nationwide
- Why ICMS



# Generic corridor







## Concept of Operations for SoDo ICM

---

- Use ICMS is a decision support tool.
  - For operating agencies
  - For the commuters
- Manage traffic demand and capacity by route shift and mode shift.
- Deploy corridor based incident response plan



## Organizational framework

---

- Fully actuated ... 😊
- ... and coordinated 😊
- ICM entity / committee

## Small "icm" – test run – August 2007

- Mitigates the impact of 19 days closures of 2 to 3 lanes (out of 5) Northbound I-5.
- Test strategies identified in the draft SODO ICM conops.
- Refined the ConOps and system requirement document





# Mitigation plan

---

- Traffic operation
- Transit operation
- Public outreach



# Corridor management

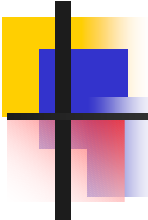
---

- TMC and EOC operations
  - Continuous traffic monitoring
  - Quick response to problems
- Roving Incident Response Teams
  - WSDOT on I-5
  - SDOT on arterials
- Real-time traffic information
- Signing & traffic control modifications
- Scheduled media updates several times a day

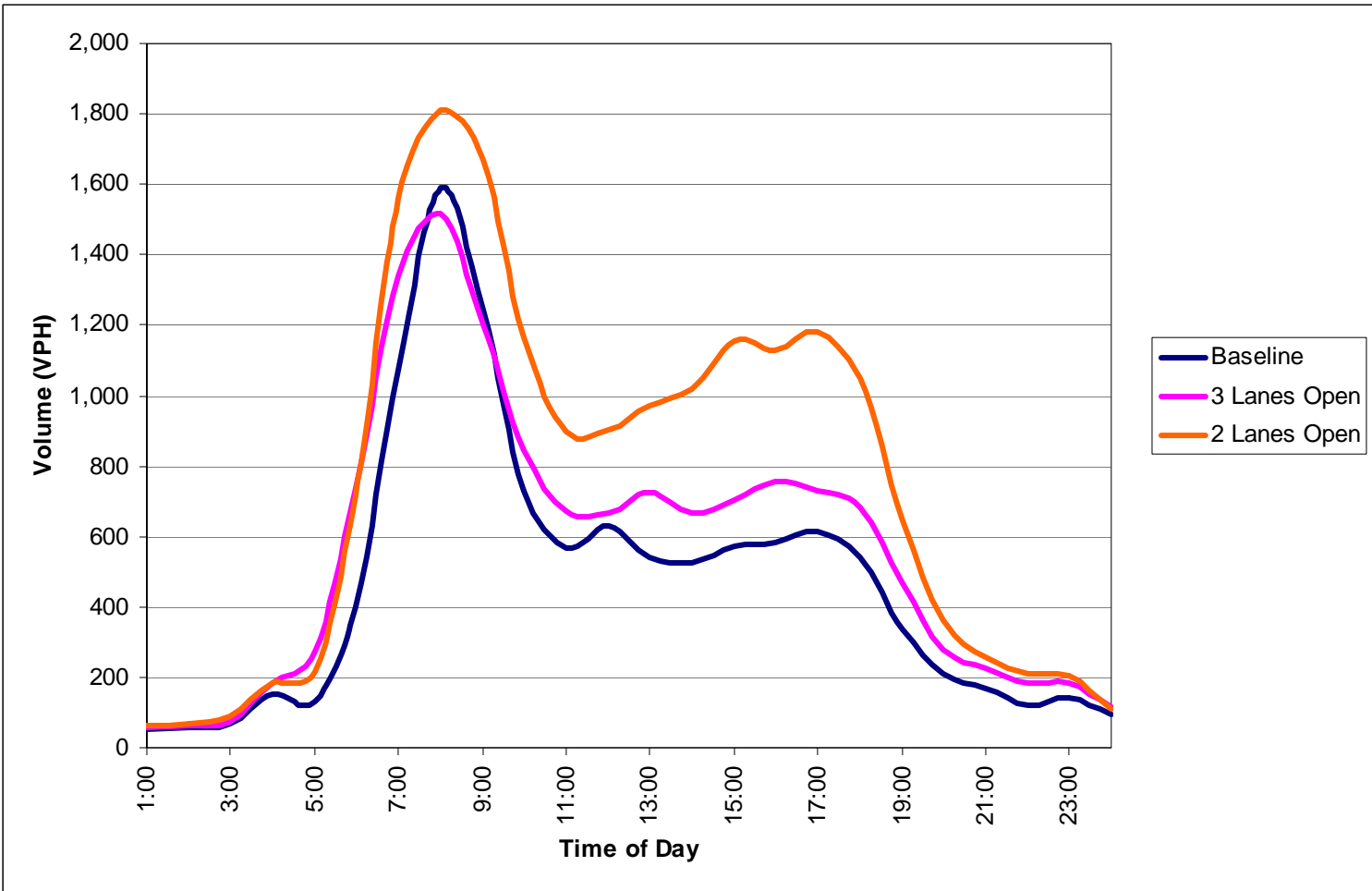
# I-5 traffic impacts

- Three lanes open
  - Short backups
  - < 10 minutes delay
  - 30% drop in volume
- Two lanes open
  - Longer backups but still operating fairly well
  - Delays between 15 and 55 minutes
  - 50% drop in volume



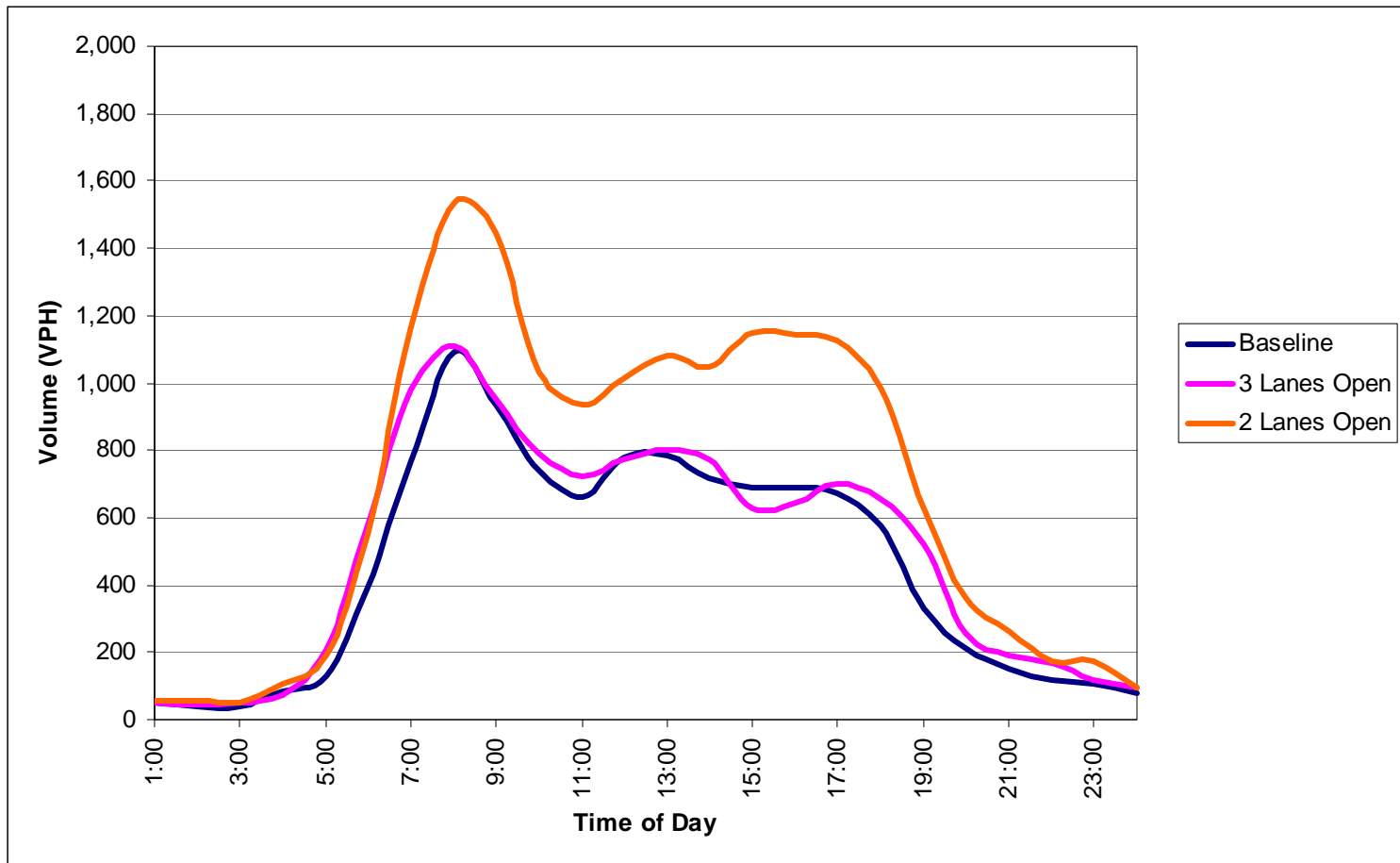


# Airport Way traffic impacts



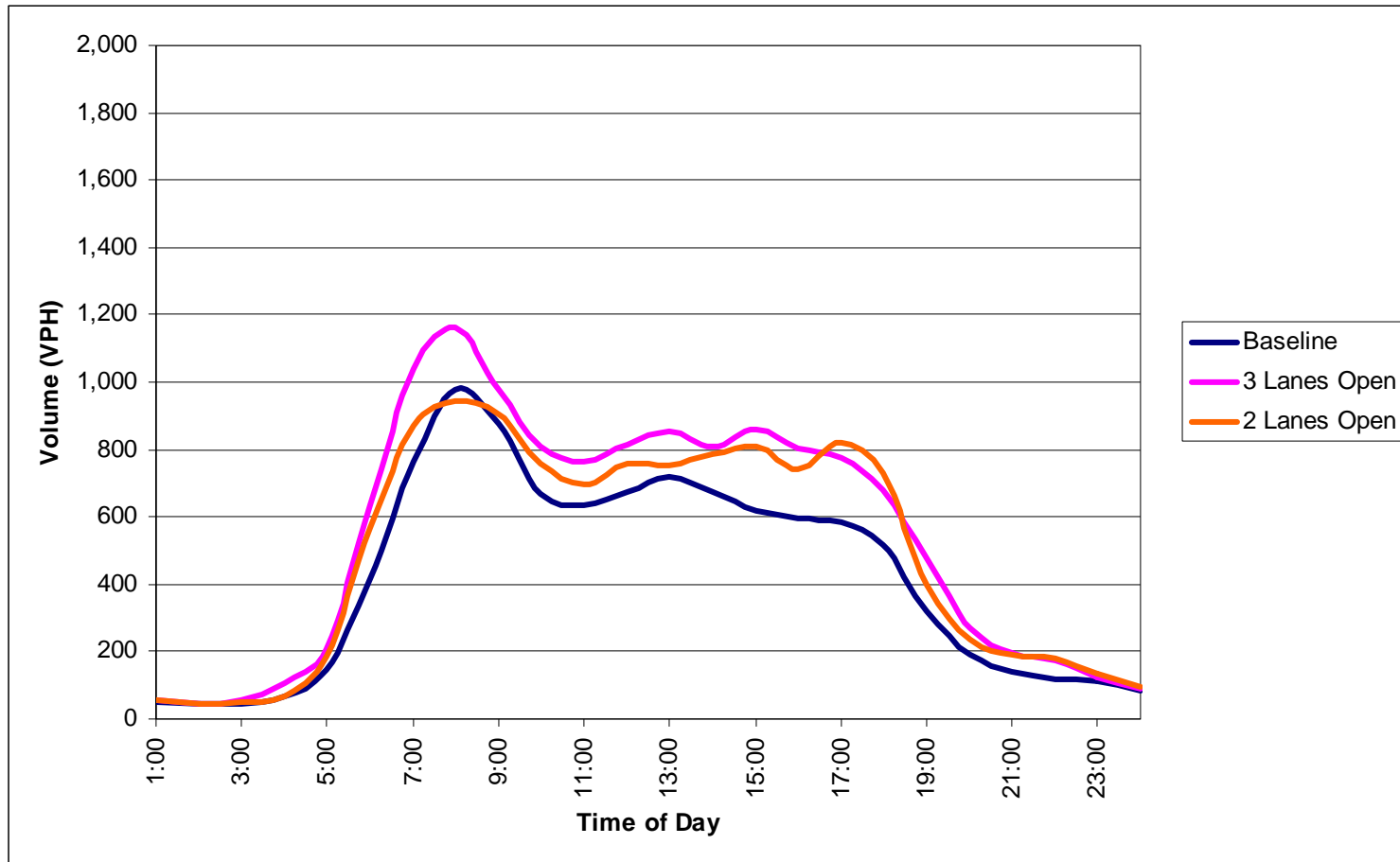


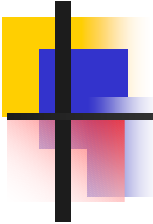
# 4<sup>th</sup> Avenue traffic impacts



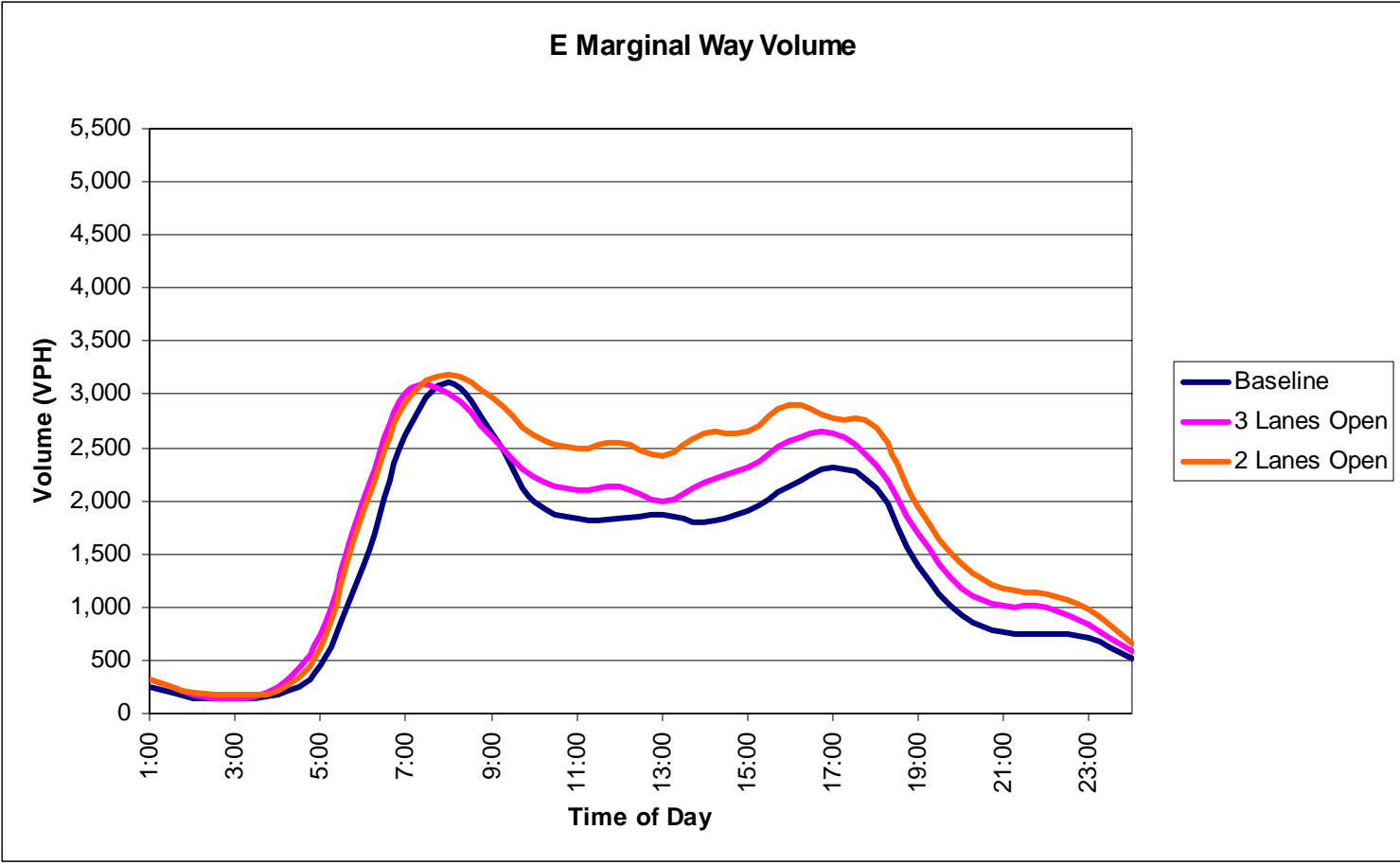


# 1<sup>st</sup> Avenue traffic impacts



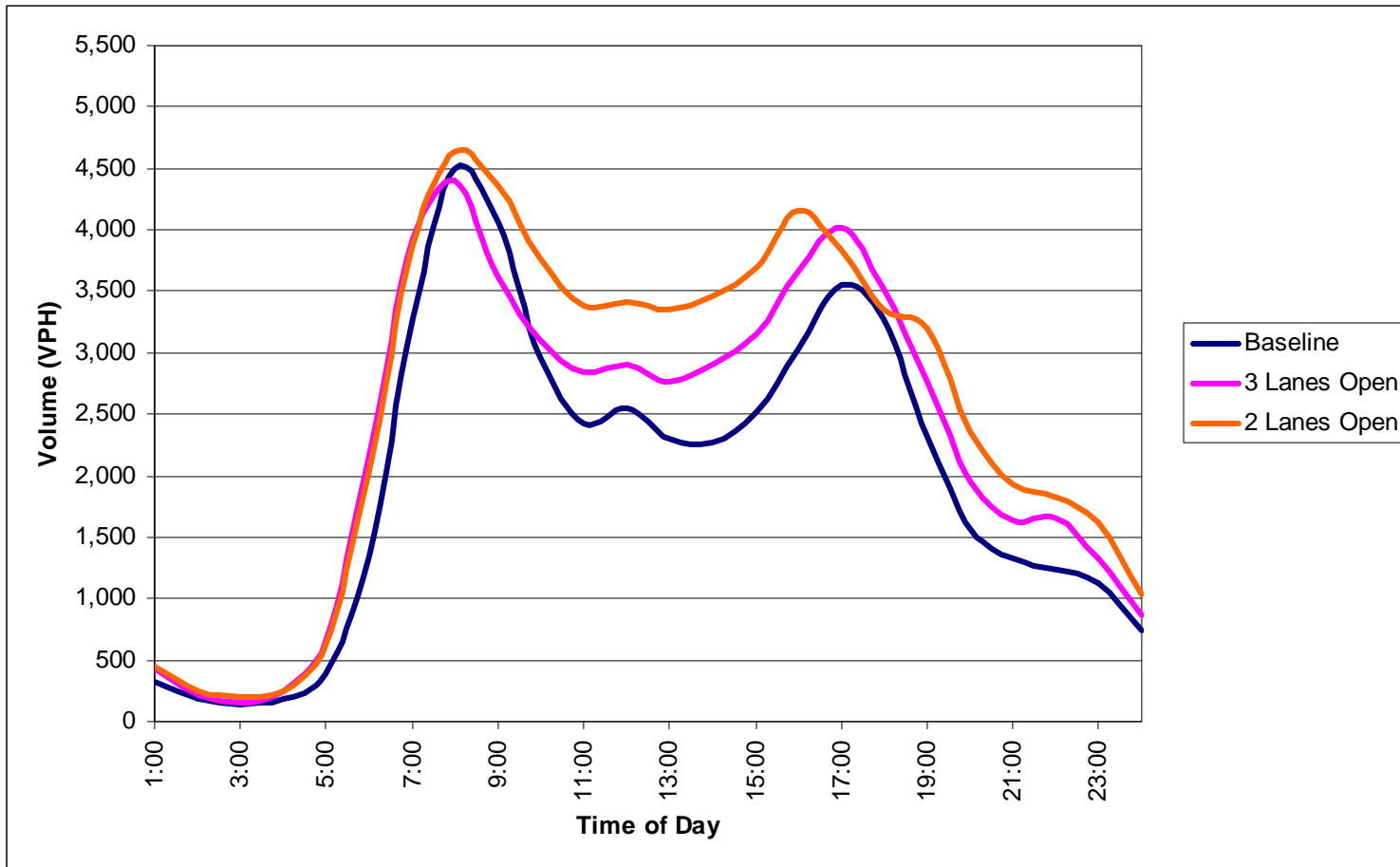


# E. Marginal Way traffic impacts





# Viaduct traffic impacts





# Mass transit impacts

---

- **Sounder**
  - Very high initial volumes (2200 new riders)
  - Less extra riders later in project (1200 new riders)
- **Bus (I-5 parallel routes)**
  - variable by route
  - total increase of 3000 daily, 1100 peak riders
- **Vanpool / carpool -- 162 new registered riders**
- **Ferry overloads increased**



# Lesson learned

---

- Works together
  - Assess **system's** impact
  - Develop **comprehensive** mitigation plans
- Manage parallel networks as integrated corridor
  - Stay connected and committed
  - Balance traffic load in the corridor
- Room for improvement
  - Comprehensive traveler information
  - Automate information sharing and notification