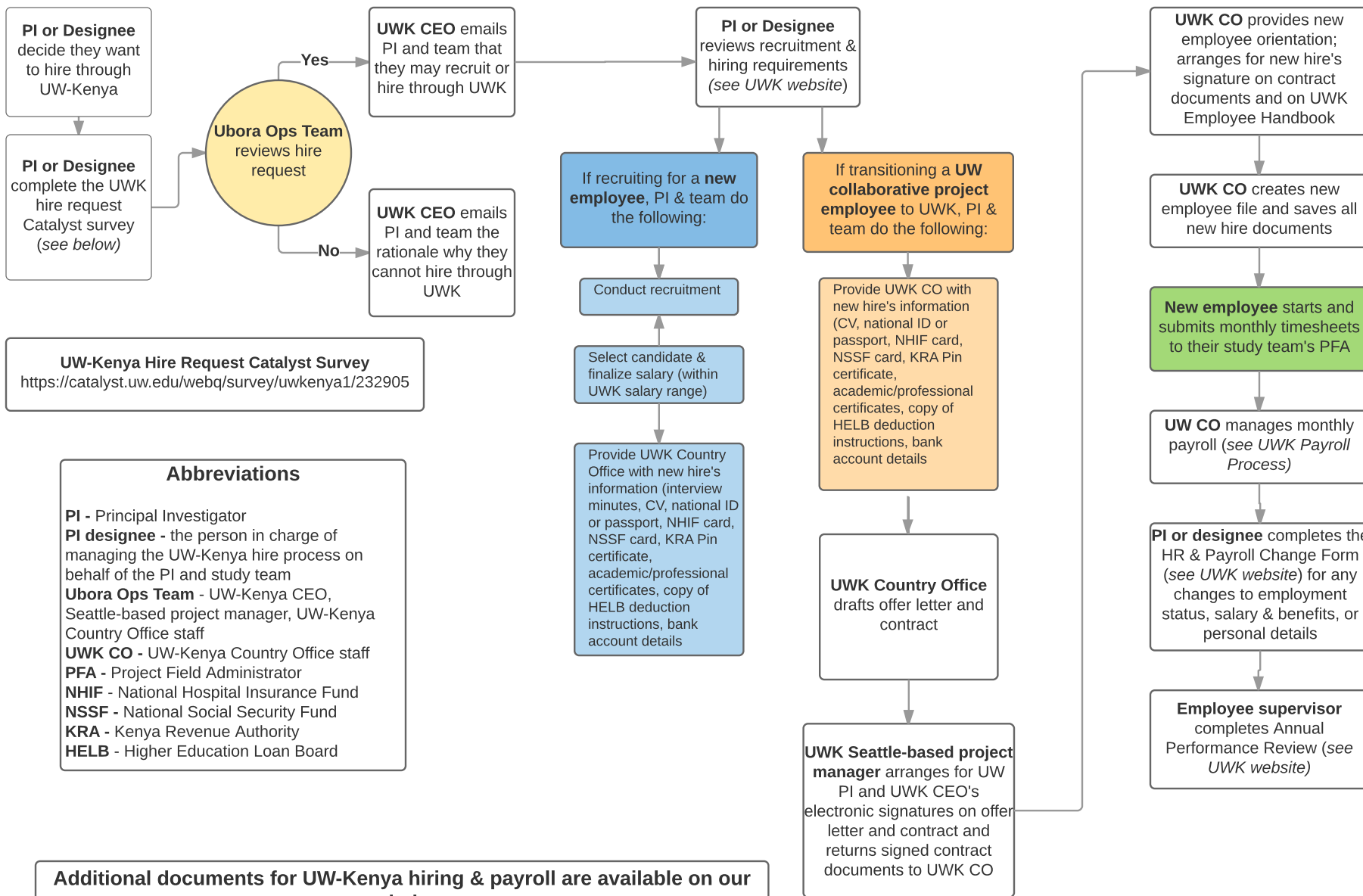


UW-KENYA REGULAR EMPLOYEE HIRING FLOWCHART

September 2017



UW-Kenya Hire Request Catalyst Survey
<https://catalyst.uw.edu/webq/survey/uwkenya1/232905>

Abbreviations

- PI** - Principal Investigator
- PI designee** - the person in charge of managing the UW-Kenya hire process on behalf of the PI and study team
- Ubora Ops Team** - UW-Kenya CEO, Seattle-based project manager, UW-Kenya Country Office staff
- UWK CO** - UW-Kenya Country Office staff
- PFA** - Project Field Administrator
- NHIF** - National Hospital Insurance Fund
- NSSF** - National Social Security Fund
- KRA** - Kenya Revenue Authority
- HELB** - Higher Education Loan Board

Additional documents for UW-Kenya hiring & payroll are available on our website:
<http://depts.washington.edu/kenyares/uw-kenya/hiring-and-payroll-information/>