

## UW LEND TRAINING PROGRAM

### University of Washington Leadership Education in Neurodevelopmental Disabilities (UW LEND)

University of Washington  
Center on Human Development and Disability  
Clinical Training Unit

<http://depts.washington.edu/lend>



---

---

---

---

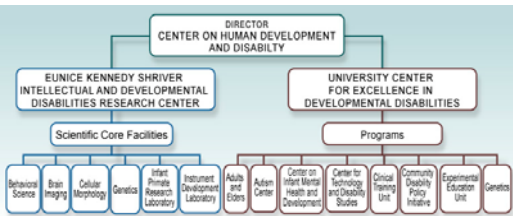
---

---

---

---

## Clinical Training Unit at CHDD



---

---

---

---

---

---

---

---

## Clinical Training Unit

- **Interdisciplinary Training**
  - One of 38 LEND programs
  - Other funding sources
- **Exemplary Service**
  - Child Development Clinic
  - High Risk Infant Follow up
  - Pediatric Audiology
  - FAS Clinic
  - Professional fees, 40% Medicaid



---

---

---

---

---


---

---

---

**Clinical Training Unit**

- Continuing Education and Technical Assistance
  - Contracts with DOH
    - Medical Home
    - Adolescent Transition
    - Child Profile
  - Other partners
- Research
  - UW, Seattle Children's Hospital
  - Federal, Foundation, & Industry funding sources



---

---

---

---

---

---

---

---

**Maternal and Child Health Bureau Training Program Portfolio**

- Leadership Education in Neurodevelopmental Disabilities
- Leadership Education in Adolescent Health
- Schools of Public Health
- Pediatric Pulmonary Centers
- Developmental/Behavioral Peds
- Other Disciplines



---

---

---

---

---


---

---

---

**VISION**

A world in which all children with neurodevelopmental disabilities and other special health care needs will achieve their full potential.



---

---

---

---

---

---

---

---

## MISSION

To serve as a center of excellence in leadership training to prepare the next generation of clinicians and researchers to lead the maternal and child health workforce to realize the vision



---

---

---

---

---

---

---

---

## PRIMARY PURPOSE OF LEND TRAINING

- To improve the health and development of infants, children and youth with, or at risk for developing, neurodevelopmental and related disabilities (NDRDs)
- To train health professionals for leadership roles in the provision of health and related care, continuing education, technical assistance, research and consultation



---

---

---

---

---

---

---

---

## LEND GRADUATES

Assume leadership roles in the clinical, public health and policy arenas for children with Neurodevelopmental and Related Disabilities including Autism



---

---

---

---

---

---

---

---

## UW LEND COMBATS AUTISM

**Overarching goal:**  
**More skilled professionals**  
**Better partnerships with families**  
**Early screening and diagnosis of ASDs and other NDRDs**  
**Earlier intervention for kids and families.**  
**Kids become independent adults**



---

---

---

---

---

---

---

---

## UW LEND COMBATS AUTISM GOALS (Cont.)

- State of the art curriculum adaptable to many settings and audiences
- Evidence-based, interdisciplinary training to health professionals and family trainees
- Expand training materials and venues with partners



---

---

---

---

---

---

---

---

## UW LEND COMBATS AUTISM GOALS (Cont.)

- Increase the number and diversity of trainees in the LEND program
- Increase community awareness and knowledge:
  - Screening
  - Diagnosis
  - Treatment
  - Formal and informal supports



---

---

---

---

---

---

---

---

## UW LEND COMBATS AUTISM GOALS (Cont.)

- Health professionals participate in community partnerships
- Collaborate with
  - State Implementation Grant
  - Other CAA grantees
  - Other MCHB grantees
  - Autism Speaks
  - Autism Treatment Network
  - All of you
- Strong scientific evidence base regarding effective screening, diagnosis & treatment



---

---

---

---

---

---

---

---

## CURRICULUM AND COMPETENCY REQUIREMENTS

- Scientific knowledge and skill in all aspects of child development with emphasis on NDRDs & ASDs
- Mastery of professional and interdisciplinary skills



---

---

---

---

---

---

---

---

## Curriculum and Competency Requirements (Cont.)

- Knowledge and Skill in:
  - Evidence-based practice
  - Family-centered care
  - Culturally-competent, community-based care to eliminate disparities
  - Title V legislation and policies
  - Public health core functions
  - Systems of care for all children



---

---

---

---

---

---

---

---

## Sample Activities

- New LEND Trainees:
  - Family Members
  - Child Neurology
  - Child Psychiatry
  - Special Education
- Comprehensive curriculum development
- School system psychologist outreach
- White Center Early Learning Initiative
- Statewide collaboration
- And more...



---

---

---

---

---

---

---

---

## WEBSITES

- LEND WEBSITE  
<http://depts.washington.edu/lend>
- CHDD WEBSITE  
<http://depts.washington.edu/chdd>
- MATERNAL AND CHILD HEALTH BUREAU  
<http://mchb.hrsa.gov>
- HEALTH RESOURCES SERVICES  
ADMINISTRATION <http://hrsa.gov>
- ASSOCIATION OF UNIVERSITY CENTERS ON  
DISABILITIES <http://aucd.org>



---

---

---

---

---

---

---

---

## UW LEND Combats Autism

- Kids and families deserve a better system
- All of you have key roles to play
- UW LEND's strength is professional training
- There is more than enough work to go around
- Let's get to it!



---

---

---

---

---


---

---

---

## UW LEND Contacts

- Director: John F. (Jeff) McLaughlin, MD
  - [jfmcl@u.washington.edu](mailto:jfmcl@u.washington.edu)
  - 206-685-1350
- Training Director: Sally Stuart, MSW
  - [sns@u.washington.edu](mailto:sns@u.washington.edu)
  - 206-543-2513
- CAA Coordinator: Kathleen Lehman, PhD
  - [lehmank@u.washington.edu](mailto:lehmank@u.washington.edu)
  - 206-685-1360
- Katherine TeKolste, MD
  - [kat423@u.washington.edu](mailto:kat423@u.washington.edu)
  - 206-598-6804




---

---

---

---

---

---

---

---



**WHEN IT'S BUDGET CUTTING TIME, THEY ALWAYS START WITH THE EASIEST TARGETS.**

Children with needs call 'stand up for Diaperies.' Which makes them an easy mark for politicians who don't cut their back. Give children a voice. Your kids can vote. They pass on **THE CHILDREN'S DEFENSE FUND**.

---

---

---

---

---

---

---

---