

The following graphs represent the number of cancellations performed by SPS over the past 1.5 years.

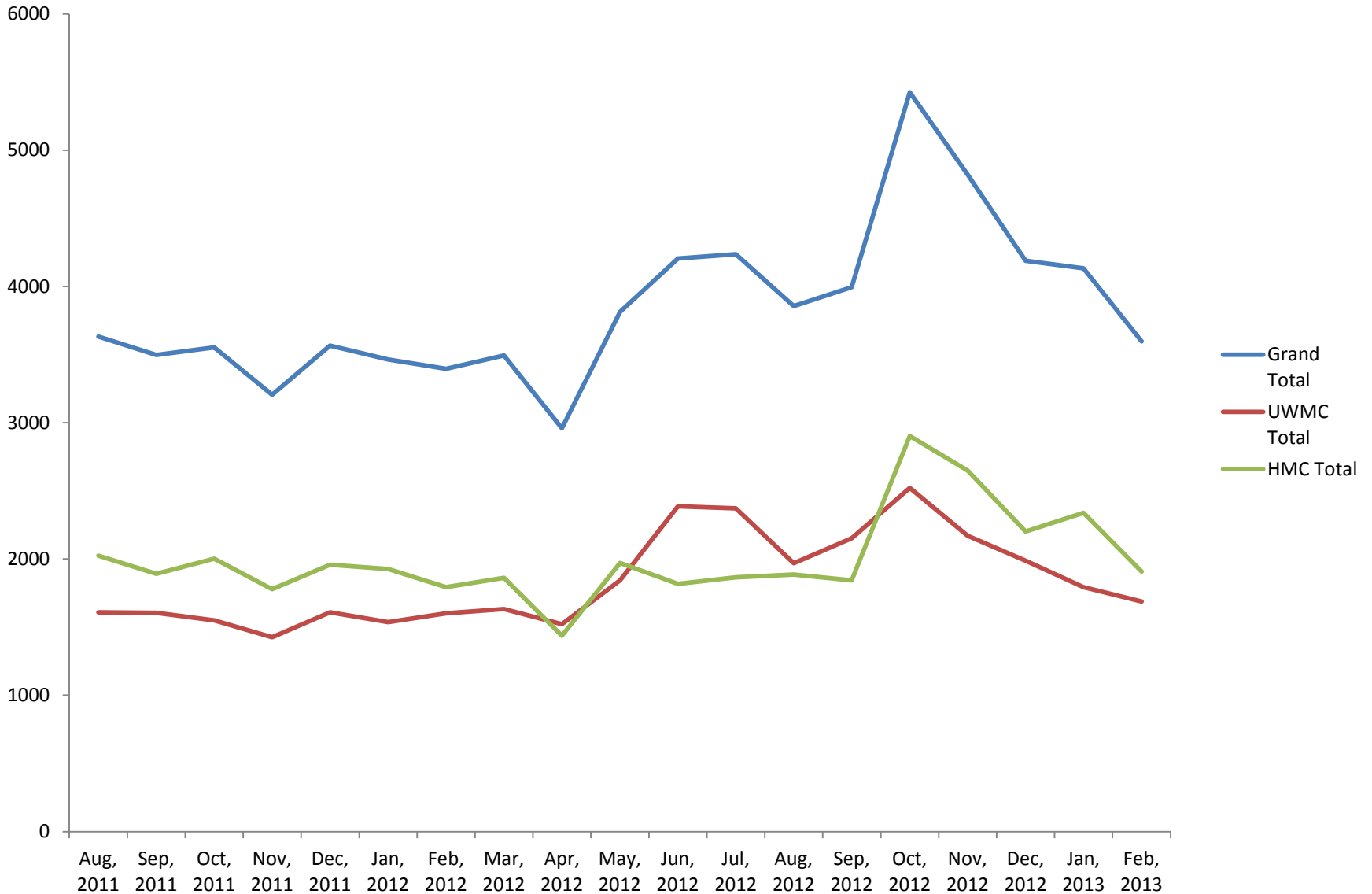
The volume of cancellations performed by SPS has returned to pre-CPOE levels and is still decreasing.

The number of logging errors has decreased considerably.

There was an initial spike in CPOE error-handling, but the number of serious CPOE issues (those requiring cancellation) has been reduced to a manageable level.

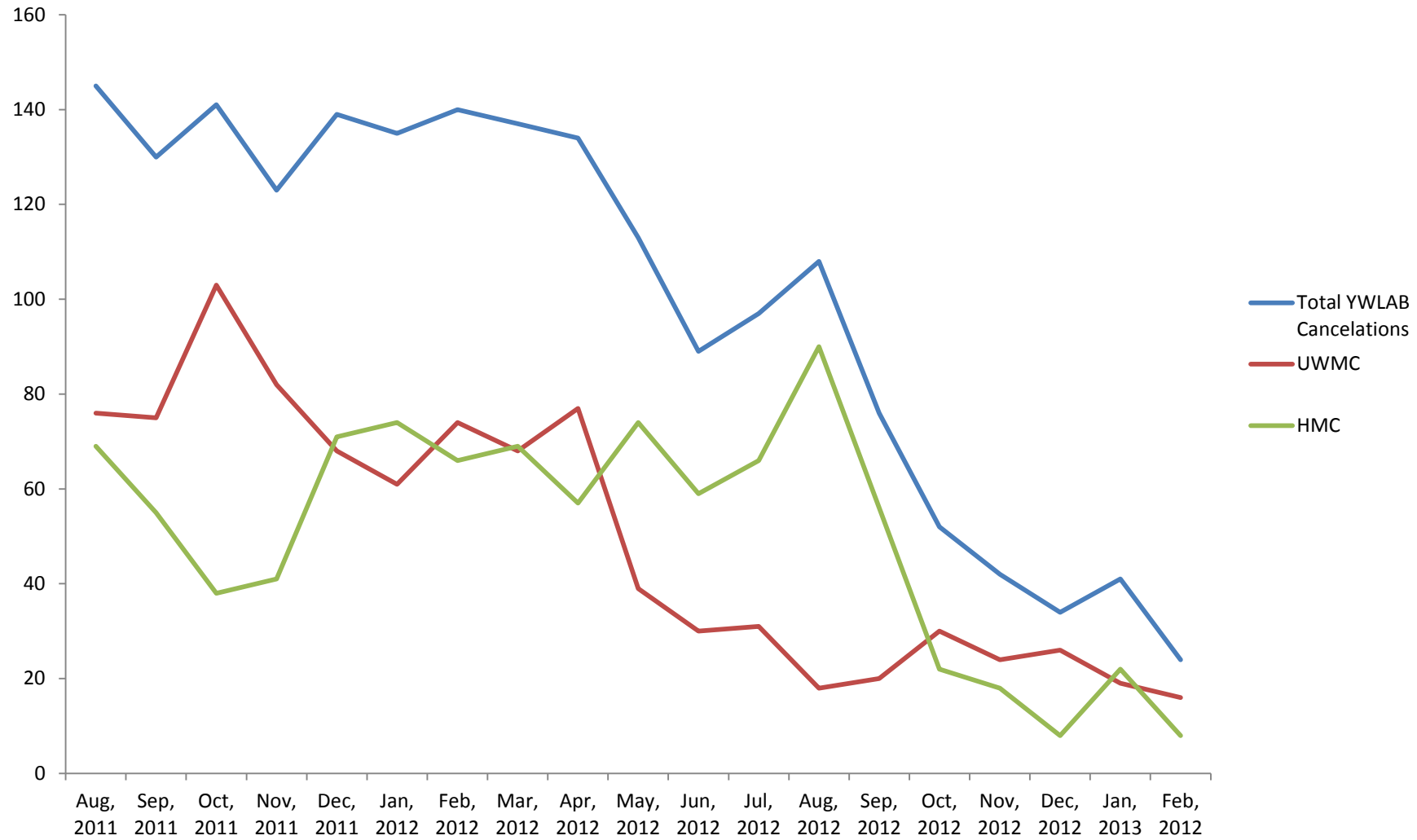
There appears to be no correlation between CPOE and the number of lab accidents resulting in cancellation.

# Metrics: Total Cancelations



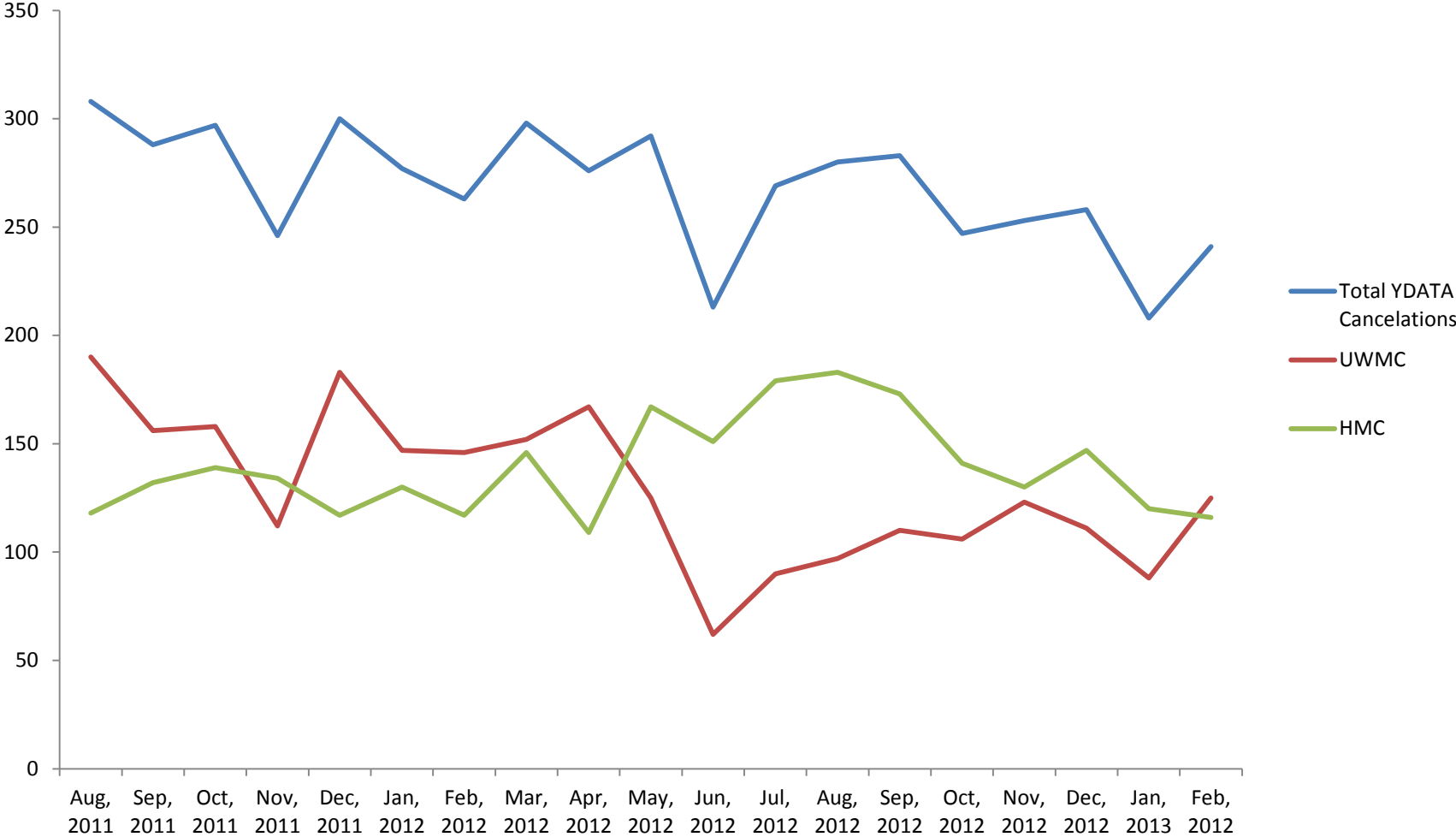
# Metrics: Logging Errors - YWLAB

## YWLAB Cancelations



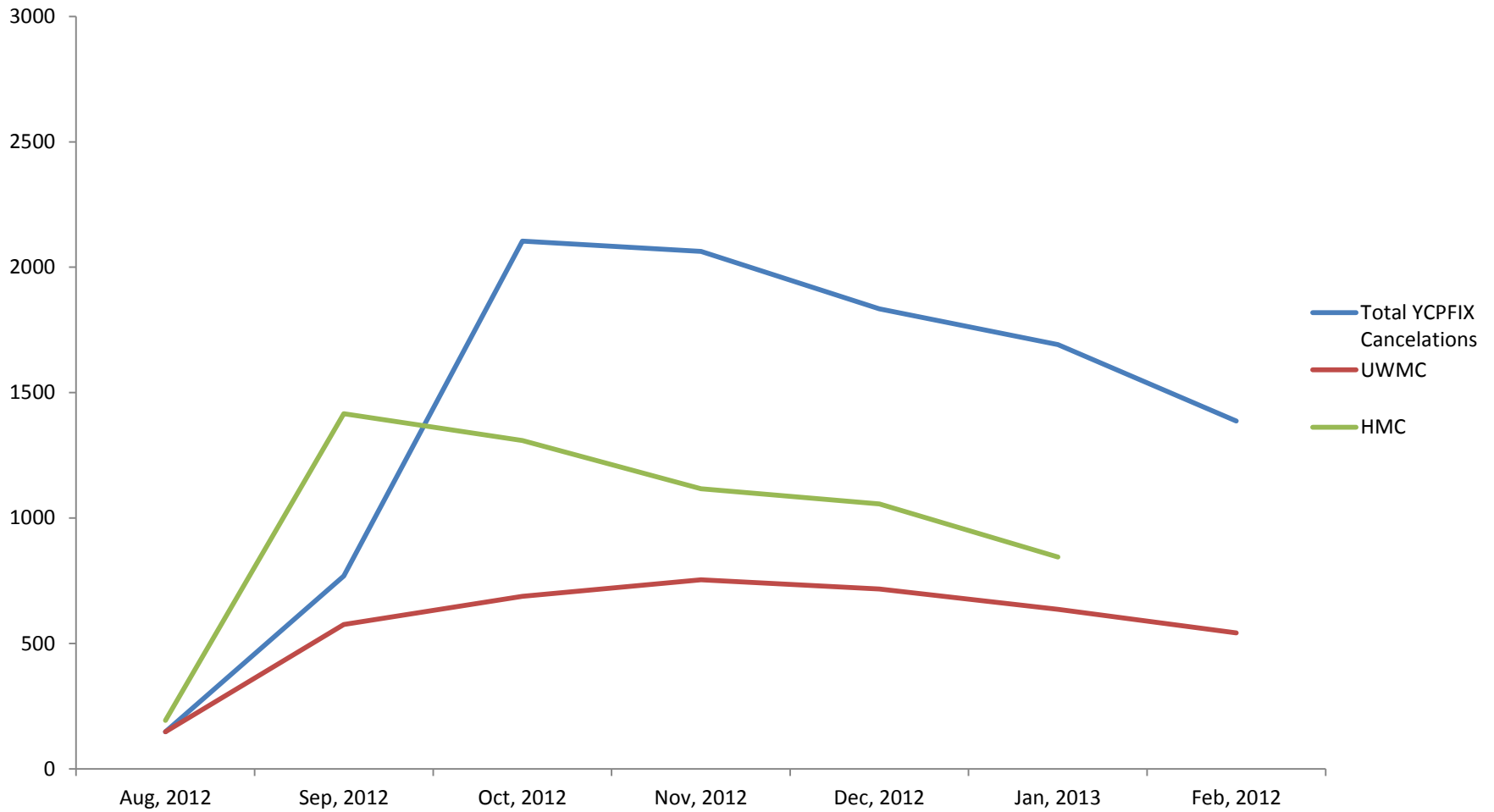
# Metrics: Logging Errors - YDATA

## YDATA Cancelations



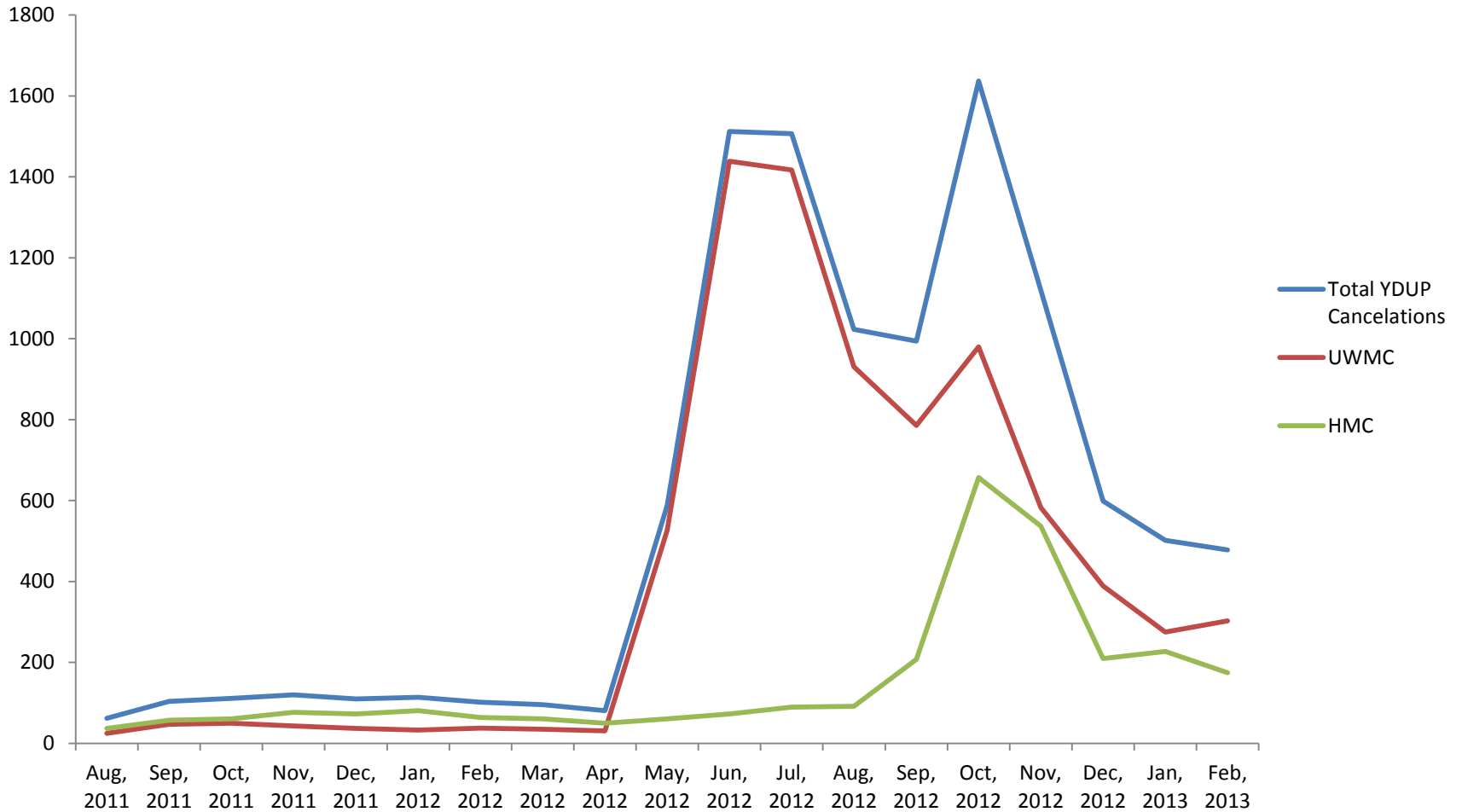
# Metrics: CPOE Errors - YCPFIX

## YCPFIX Cancelations



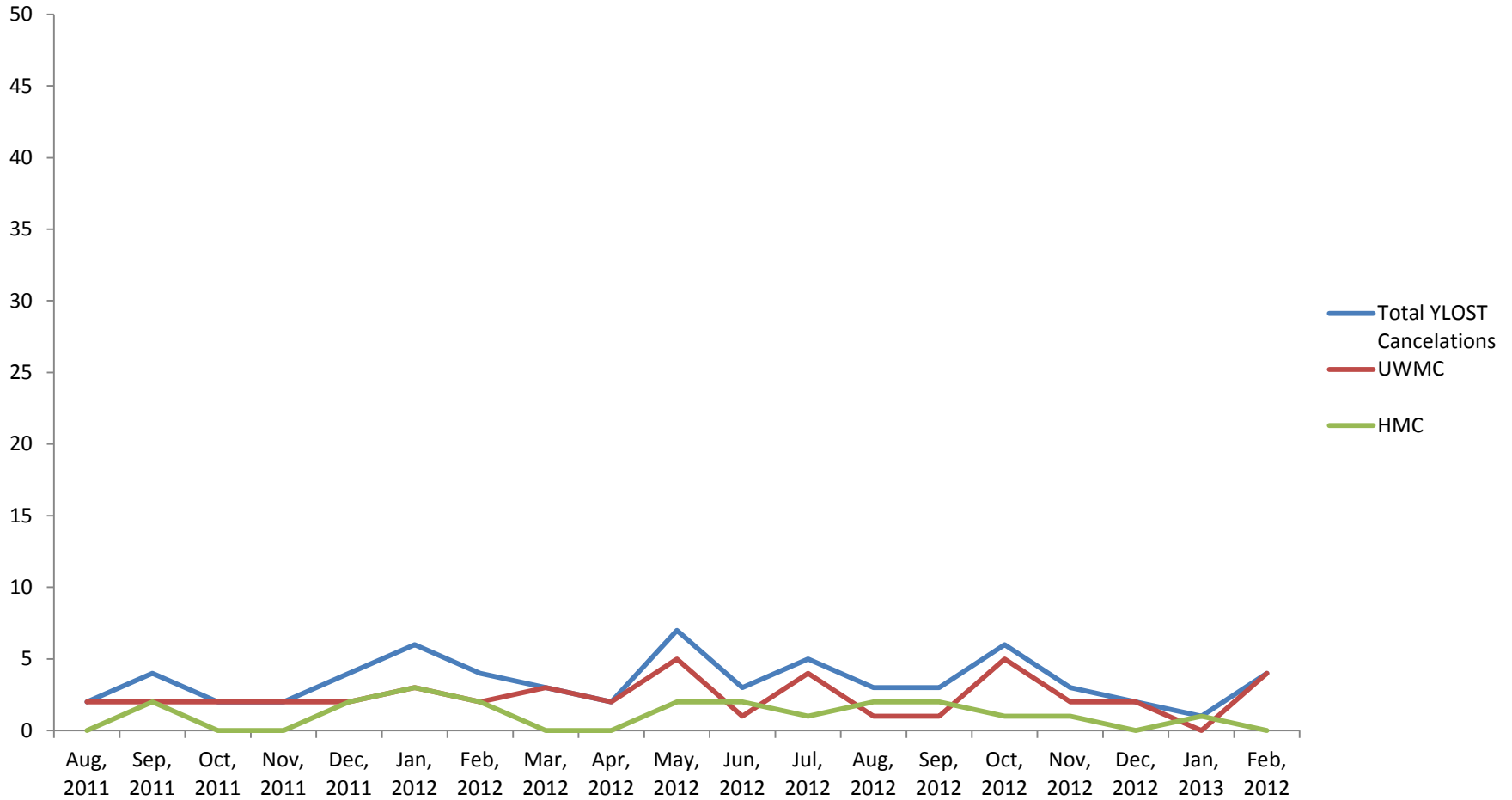
# Metrics: CPOE Errors - YDUP

## YDUP Cancelations



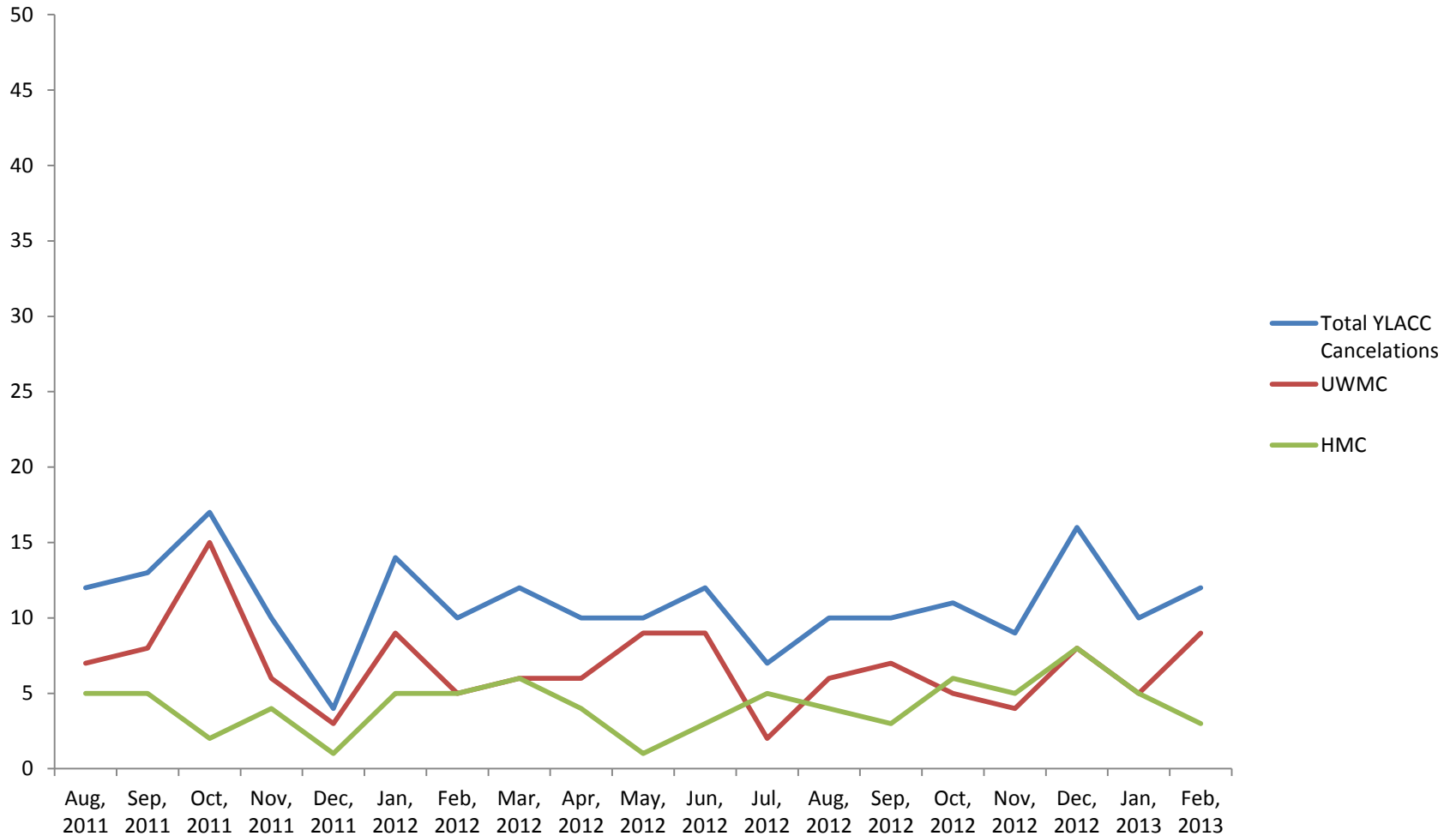
# Lost Specimens

## YLOST Cancellations



# Metrics: Handling Errors

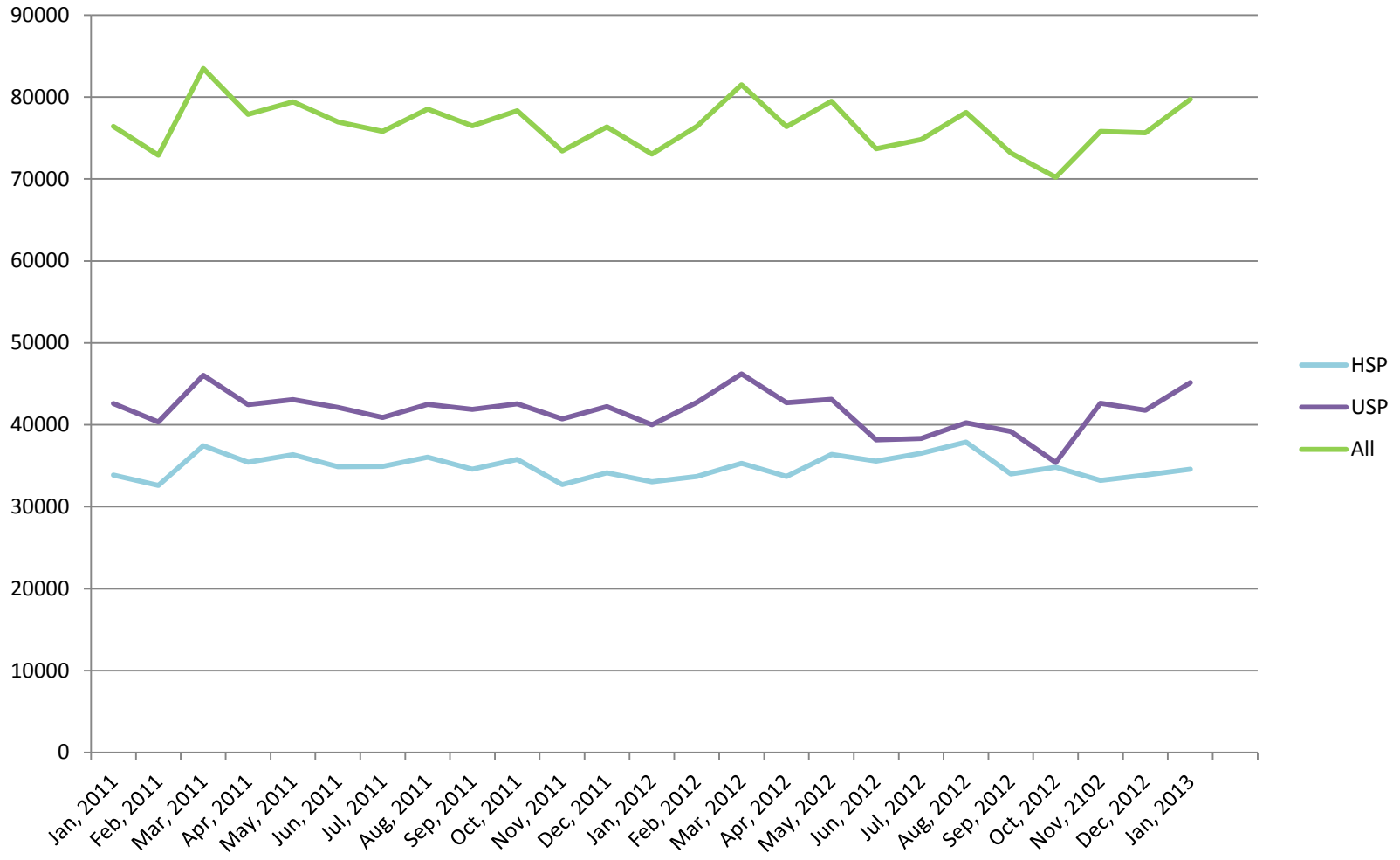
## YLACC Cancelations



The following graphs represent the work processed by SPS in the last 1 to 2 years.

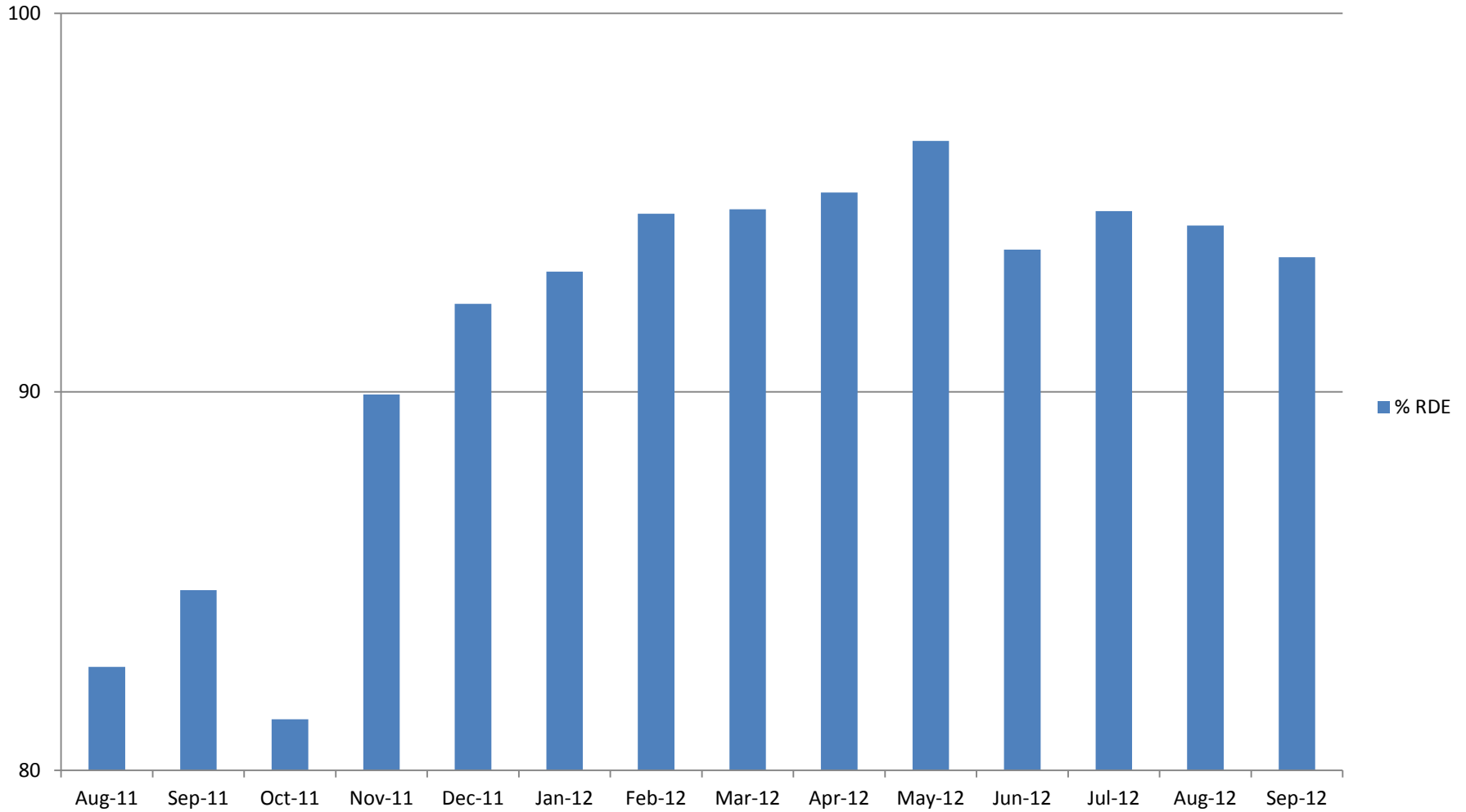
# Metrics: Total Work

## Accession Numbers Processed by SPS



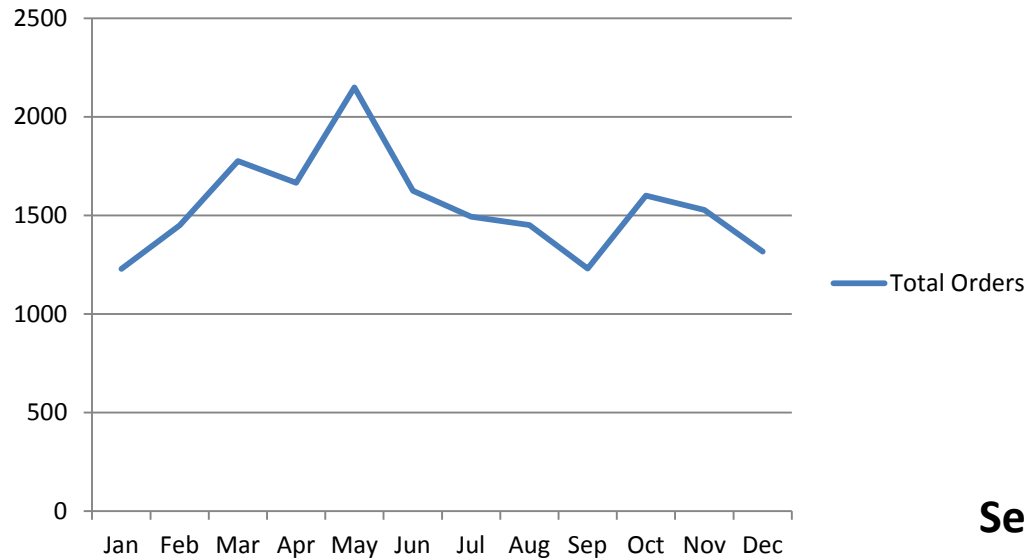
# Metrics: RDE

**% Manual RDE by SPS**



# Metrics: Send-out Volume

## Total Send-Out Orders 2012



## Send-Outs by Hospital, 2012

