

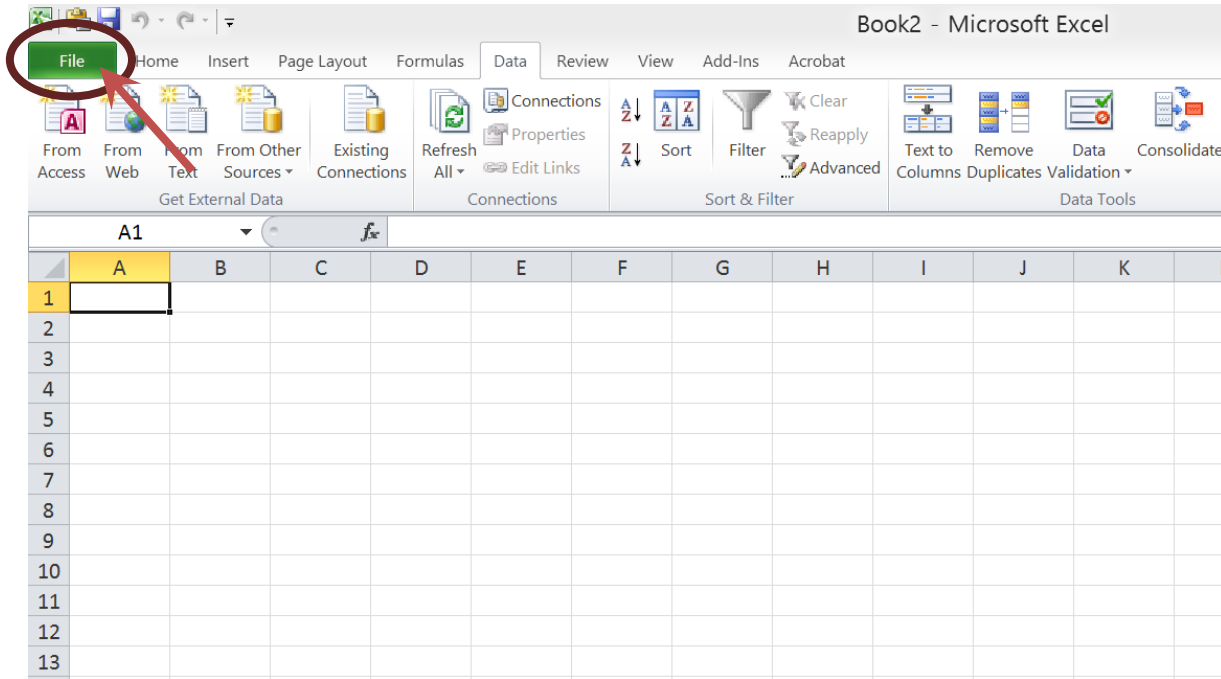
## Solver Tutorial: Excel 2010

**Summary:**

This tutorial will show how you can activate Solver and the Analysis ToolPak in Excel 2010.

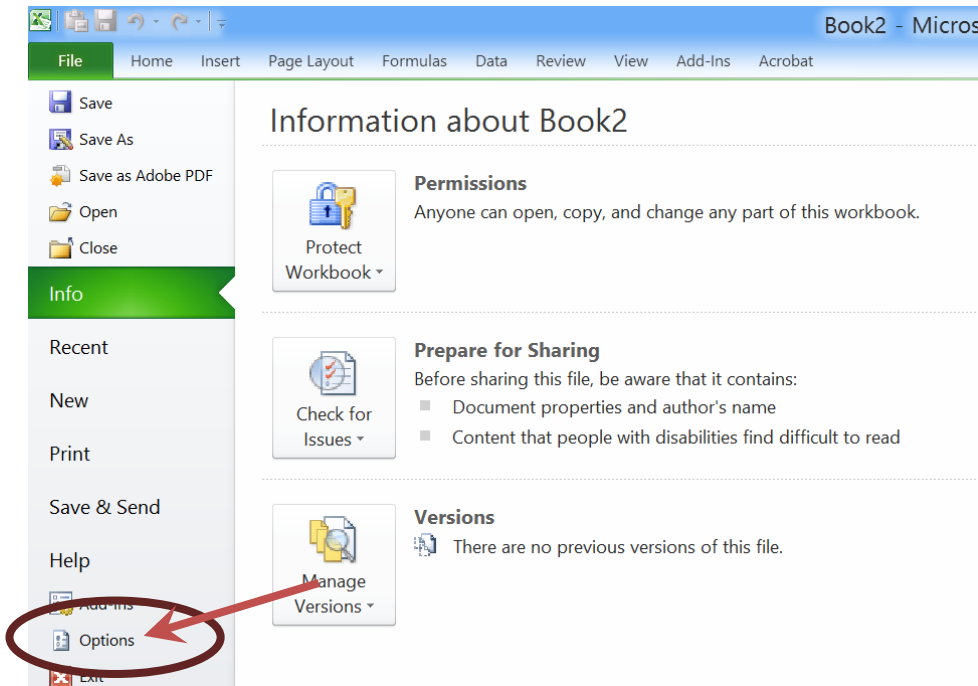
**Step 1:**

Open Excel 2010. Click on the upper left side of the screen in **green** labeled “FILE”.



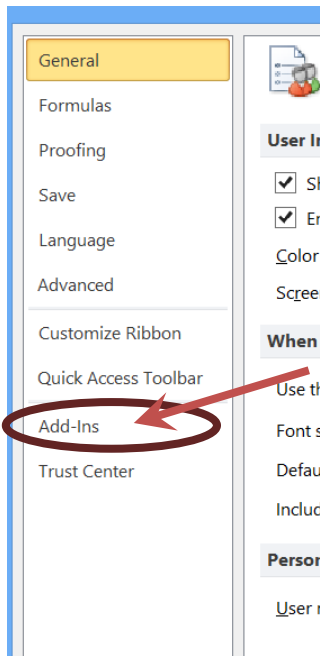
**Step 2:**

Select the “Options” button (second from the bottom)



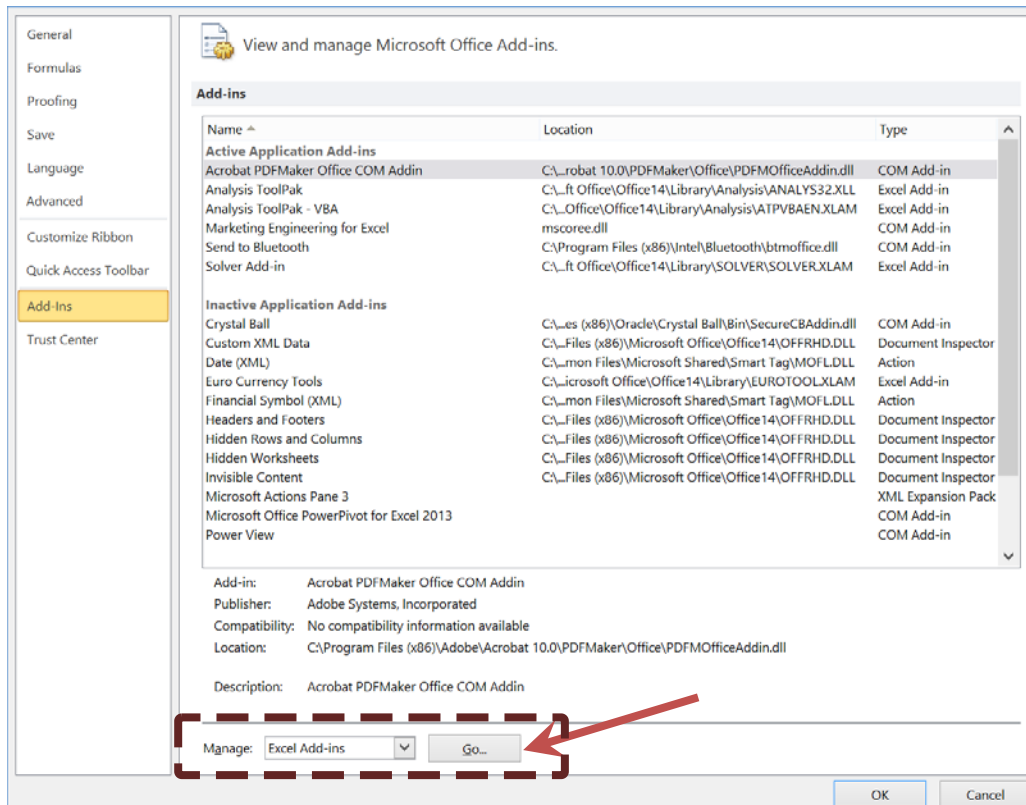
**Step 3:**

Select the “Add-Ins” button (second from the bottom on the left)



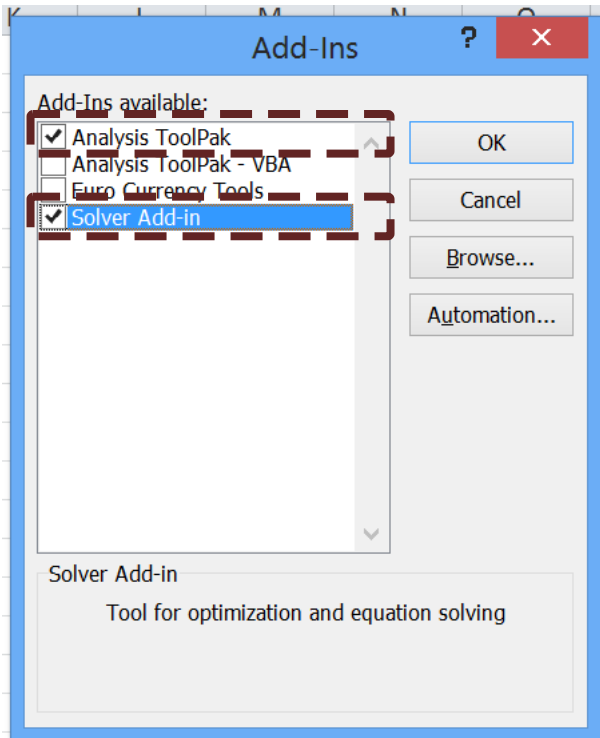
**Step 4:**

Towards the bottom of the Add-Ins page, you will see “Manage” and a drop down box. Select “Excel Add-Ins” and press “Go”.



**Step 5:**

Select “Analysis ToolPak” and “Solver Add-in” (highest and lowest options) to activate the options and press “OK”.



**Step 6:**

The dialogue box should close automatically. Now, if you go to the “Data” tab on the ribbon, you should now have an “Analysis” block all the way to the right with buttons for “Data Analysis” and “Solver”.

