

Investigating Low Referrals to Part C Early Intervention in King County

Sharlene Joachim, MA

June 10, 2009

Maternal and Child Health Program

University of Washington School of Public Health

Individuals with Disabilities Education Act (IDEA)

IDEA Part C Early Intervention

- Federally Legislated Grant
- Administered by States
- Serves children birth to 3 years



Entitlement



Part C Eligibility

Developmental Delay

Diagnosed Condition

Physical

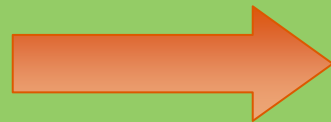
Mental

Medical

At Risk Conditions

Biological/medical

Environmental



States Define Criteria

Part C Early Intervention in Washington State

Children in Part C as % of Total Eligible Population

	U.S.	Washington	King County
Birth – 3 yr	2.24%	1.8%	1.5%
Birth – 1 yr	0.92%	0.53%	0.41%

ENTITLEMENT

Low Referrals in King County

Question

Why is King County serving fewer children in Part C than expected?

- ❑ Particularly children birth to 12 months

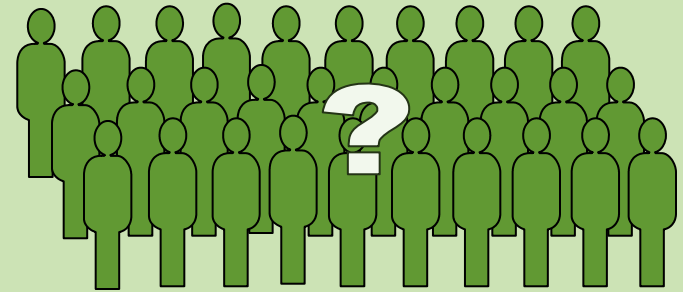
Hypothesis

Children who are eligible for Part C services in King County are receiving services from non-Part C therapy providers

Hypothesis Testing: Non-Part C Providers

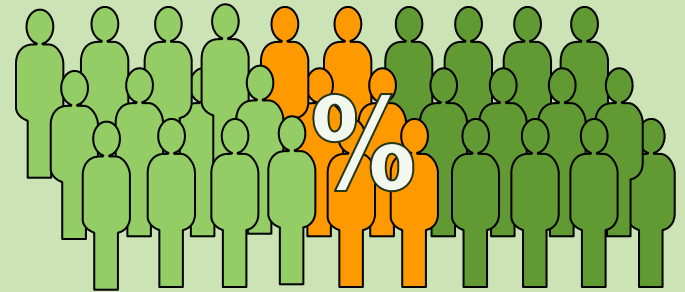
Study Aims

Describe Children



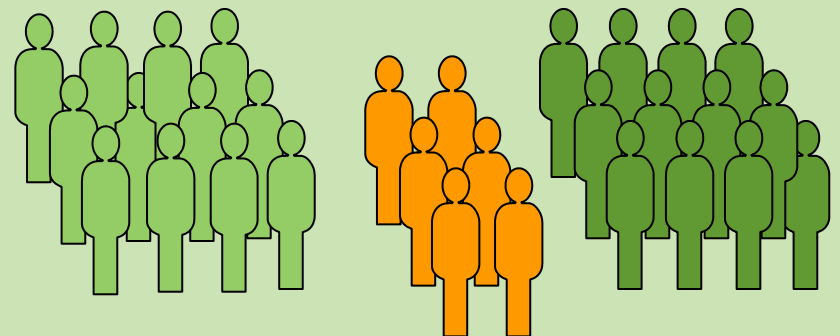
Determine % Part C Eligible

- State criteria (WA eligible)
- Broadened state criteria (PE eligible)



Identify Group Differences

- WA Eligible
- PE Eligible (Eligible IF...)
- Not eligible



Study

Design

- Descriptive study

Methods

- Retrospective medical therapy chart review
- Non-Part C medical therapy provider

Population

- Children birth to under 36 months
- July 1, 2007 – June 30, 2008
- 217 files



Study Variables

Predictors

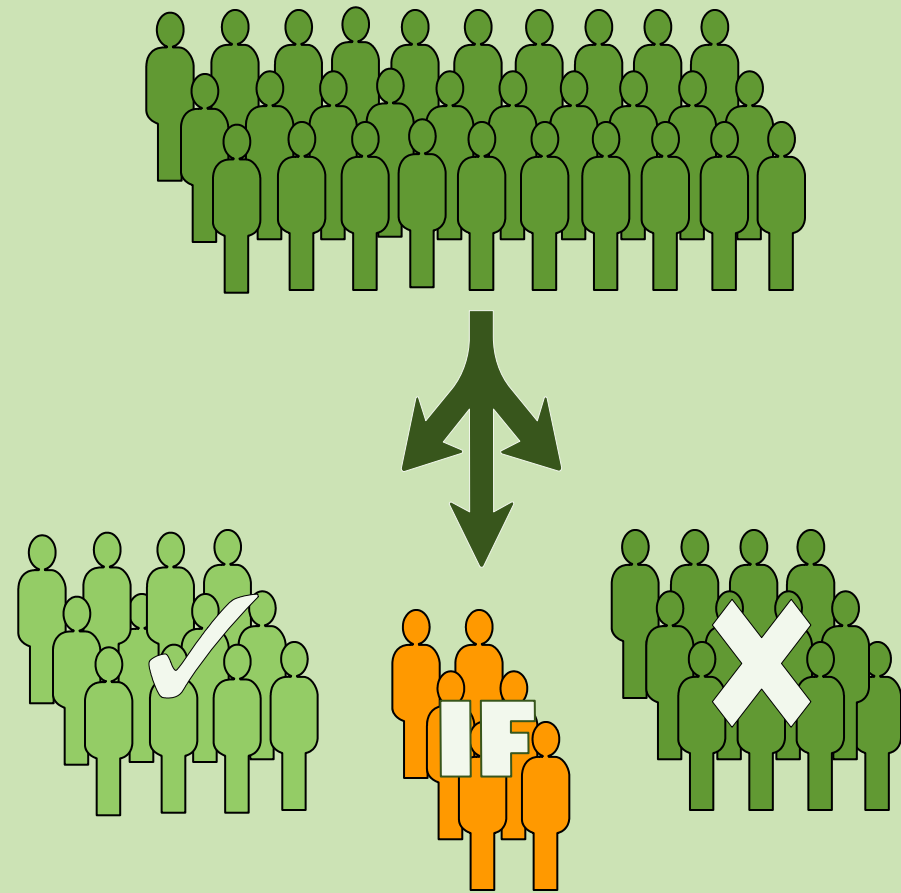
Child Characteristics

- Demographic
- Diagnostic
- Developmental test scores

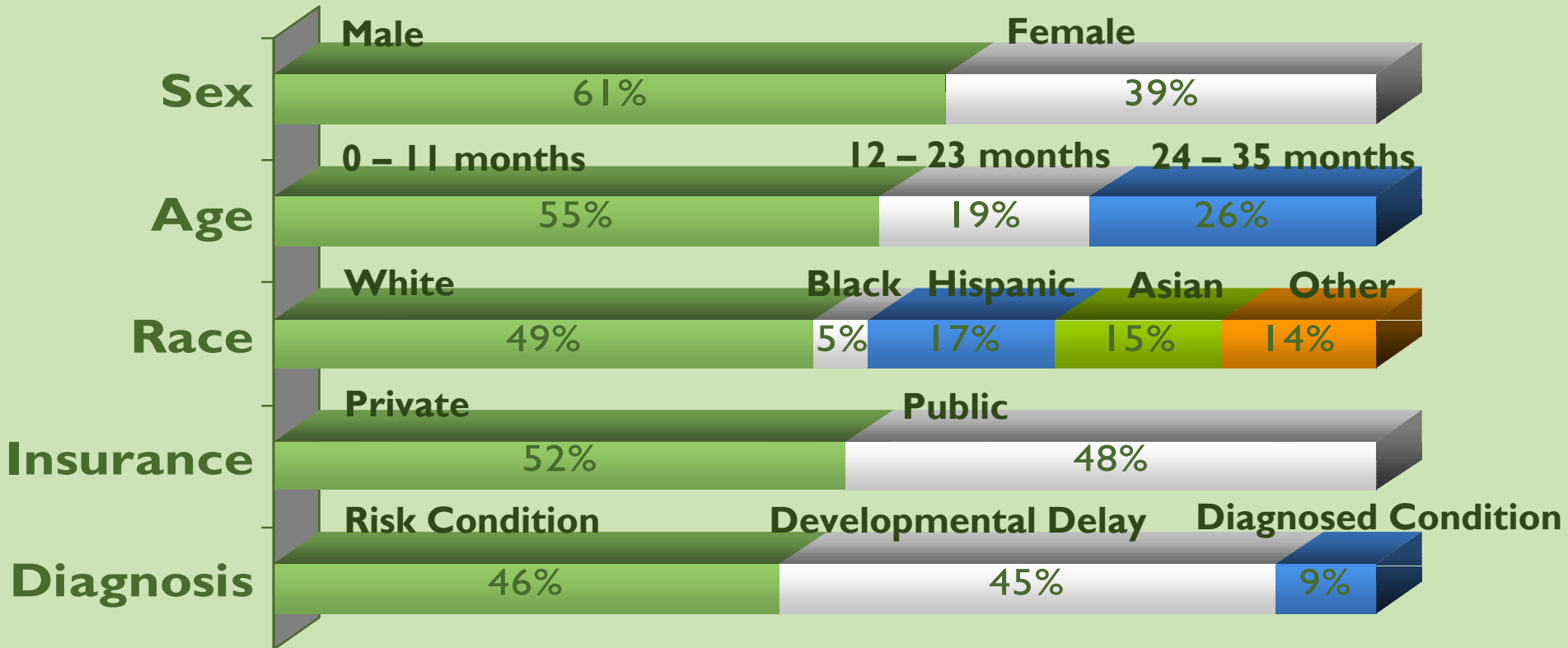
Outcome

Part C Eligibility

- WA Eligible
- PE Eligible (Eligible IF)
- Not Eligible

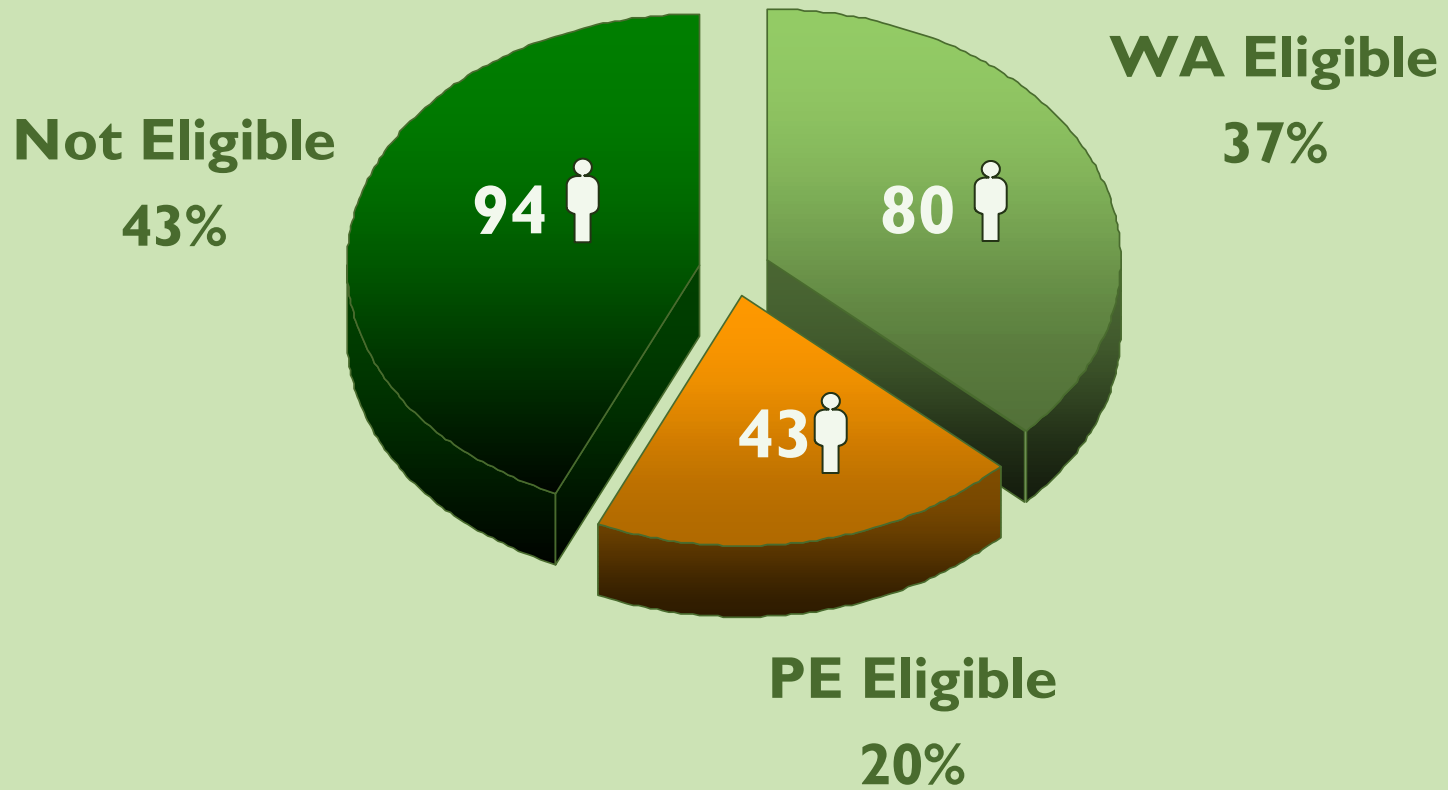


Results: Child Characteristics



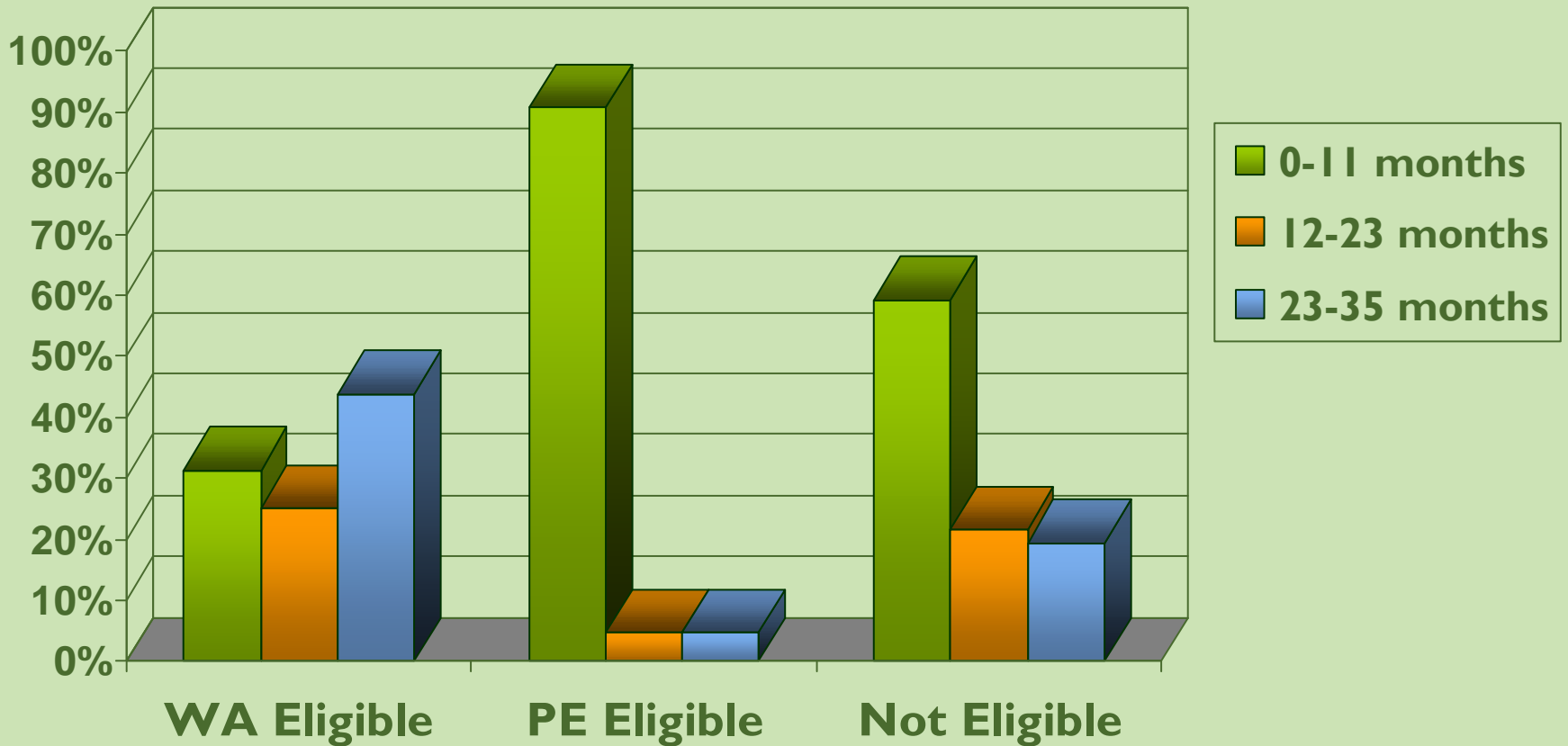
Results: Eligibility

n = 217



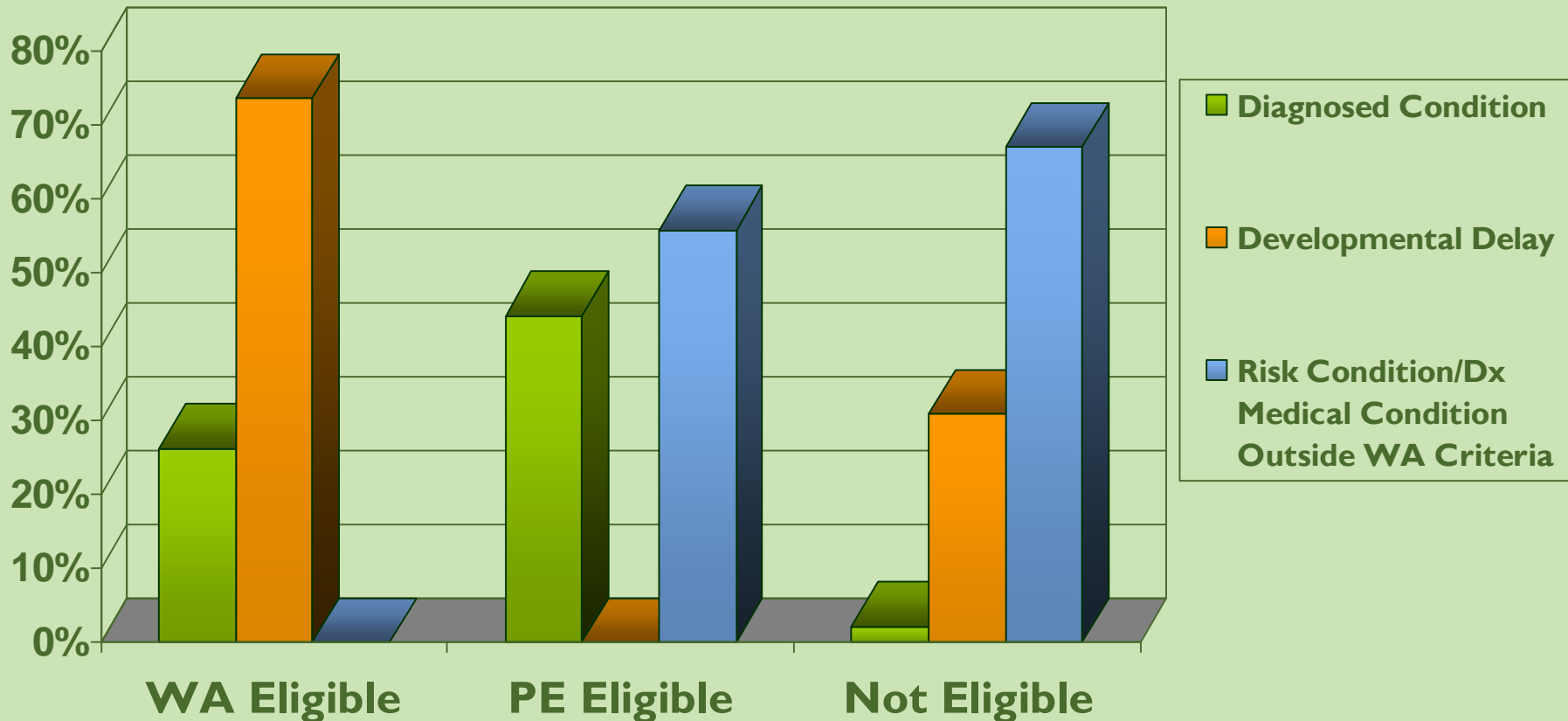
Group Differences: Age

Percent % In Age Group by Eligibility



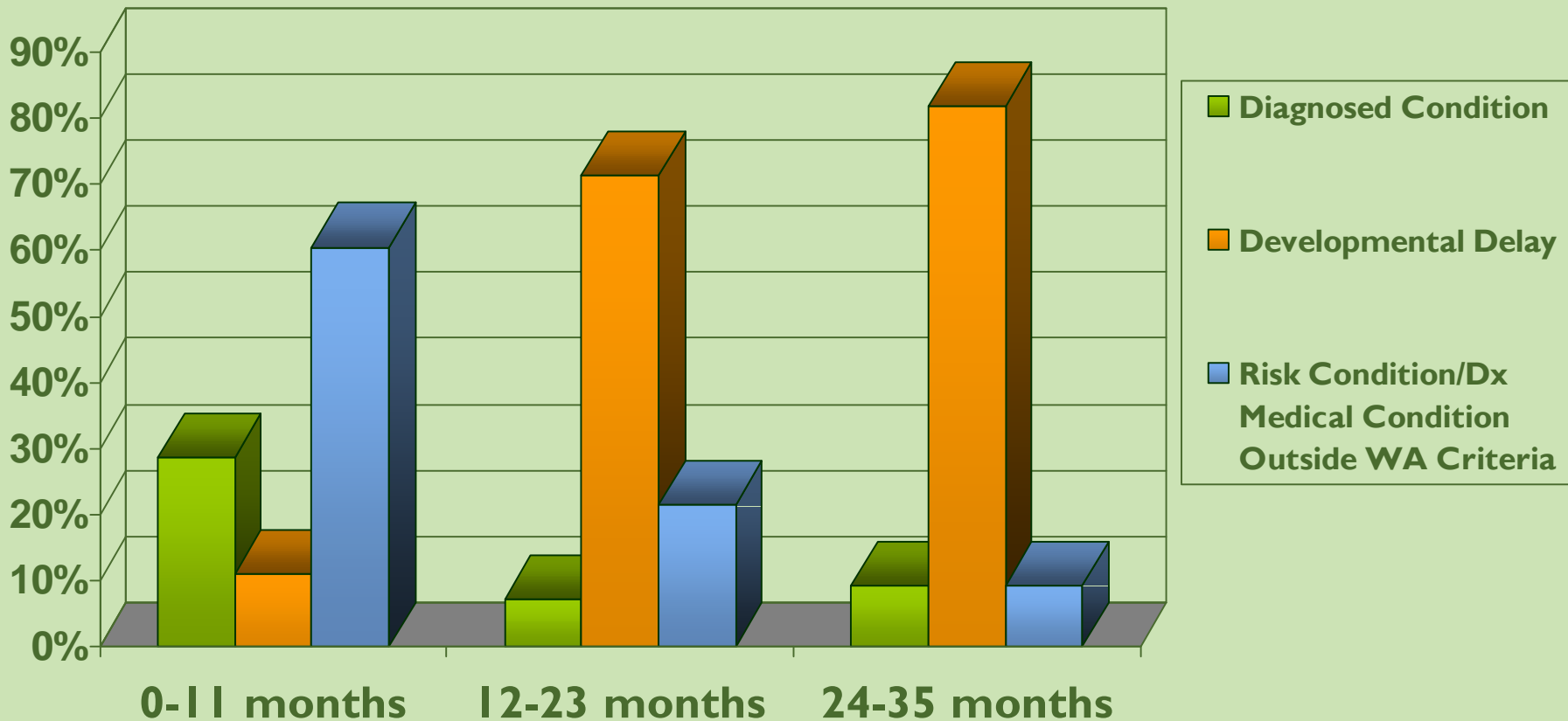
Group Differences: Diagnosis

Percent % In Diagnostic Group by Eligibility



Group Differences: Diagnostic Group and Age

Percent % In Diagnostic Group by Age



Study Findings



So What?

Children served by Non- Part C providers contribute to low %

Children are being served!

Children birth to 12 months are being served!

Reduced % of WA eligible children referred <12 months

State eligibility criteria may contribute to low referrals <12months

Reduced % of WA eligible children referred due to at risk/perinatal conditions

Extending eligibility may increase referrals <12months

Increased % of children with at risk/perinatal condition referred <12 months

Limitations

Under/Over Estimation of Part C Eligible Children

- 33% of files inaccessible
 - discharged > 1yr
 - inpatient therapy only
 - files in use

Single Non-Part C Medical Therapy Provider

- May not represent
 - Medical therapy providers
 - King County population

Implications for King County

- ❑ **Increase collaboration with Non –Part C providers**
 - State / Federal reporting
 - Ensure availability to eligible children

- ❑ **Inform family outreach**
 - Awareness of Part C
 - Access additional support services

- ❑ **Inform discussion about state eligibility criteria**

- ❑ **Increase funding**





Acknowledgements

Thesis Committee

Marcia Williams, PhD, MPH
Thesis Chair

Susan Sandall, PhD

MaryAnne Barnes MEd

Faculty Support

Janice Bell, PhD, MPH

Community Support

King County ITEIP

Supported by Project #T76 MC 00011 from the Maternal and Child Health Bureau (Title V, Social Security Act), Health Resources and Service Administration, U.S. Department of Health and Human Services.

Questions

