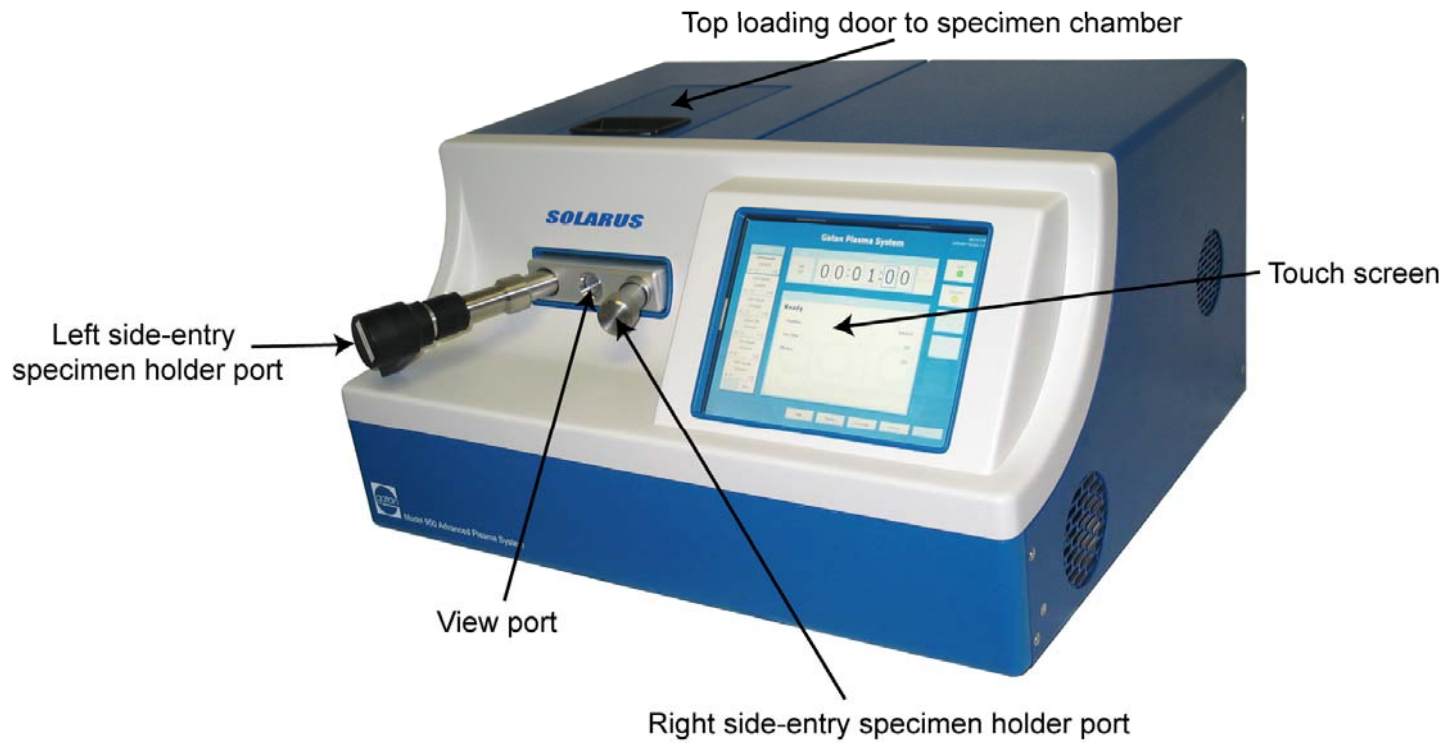
The image shows the cover of a spiral-bound notebook. The cover is a light tan or beige color with a subtle, textured pattern. On the left side, there is a silver metal spiral binding. The notebook is set against a light yellow background. The text on the cover is centered and written in a dark blue, serif font.

*Solarus 950*  
*Gatan Advanced Plasma System*  
*Training Notebook*

*NanoTech User Facility (NTUF)*  
*Center for Nanotechnology*  
*University of Washington*  
*July 2008*

# Plasma cleaner

---

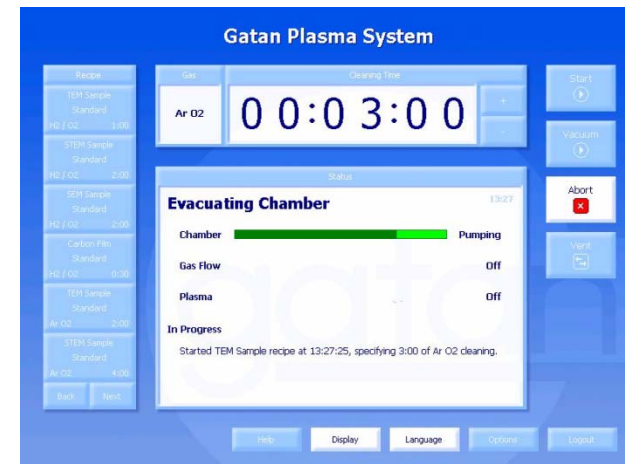


- Click “Vent” to vent chamber on the “Touch screen”.
- Wait for chamber status changing to “Vented”.

The image displays two screenshots of the Gatan Plasma System control interface. The top screenshot shows the system in a 'Ready' state with the chamber status set to 'vacuum'. The 'Cleaning Time' is set to 00:03:00. A red box highlights the 'vacuum' status, and another red box highlights the 'Vent' button. The bottom screenshot shows the system in a 'Ready' state with the chamber status set to 'vented'. The 'Cleaning Time' is set to 00:01:00. A red box highlights the 'vented' status, and another red box highlights the 'Vacuum' button. Both screenshots include a recipe list on the left, a gas selection and timing display at the top, and a status panel in the center with 'Chamber', 'Gas Flow', and 'Plasma' indicators. The 'Success' message in the top screenshot reads: 'Started TEM Sample recipe at 13:27:25, specifying 3:00 of Ar O2 clearing. Recipe successfully completed at 13:31:07.' The 'Success' message in the bottom screenshot is not visible.

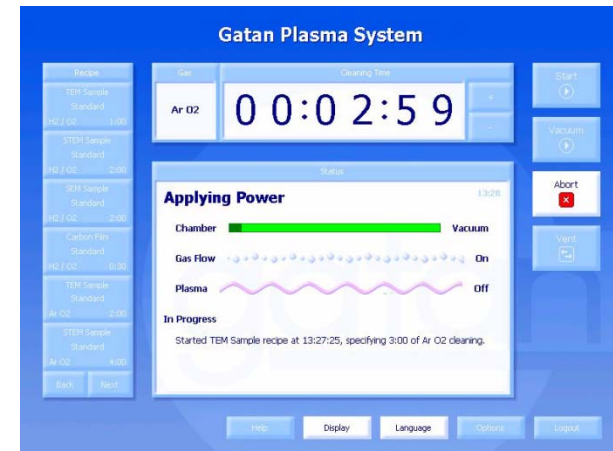
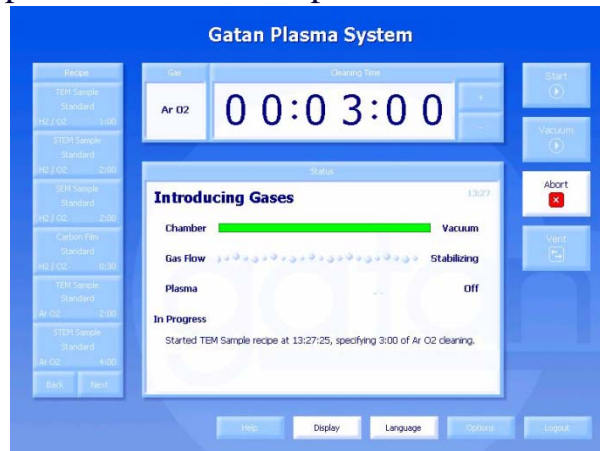
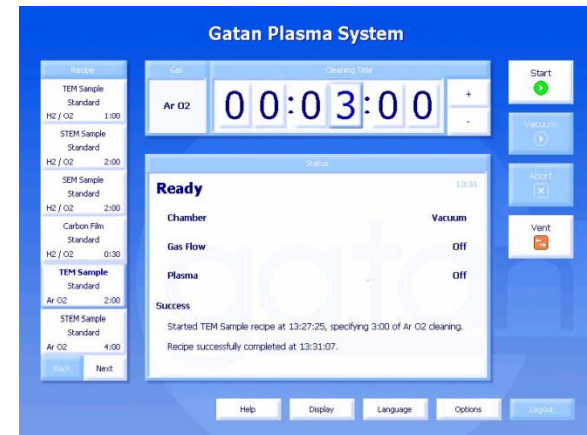
## Insert TEM holder

- ☞ Pull out “left side entry holder port”.
- ☞ Insert “TEM sample” holder.
- ☞ Click “Vacuum” on the touch screen. And system start to pump chamber.







# Clean sample

- ☞ Wait for chamber status becoming “Vacuum”.
- ☞ Check Ar and O2 at 25psi.
- ☞ Choose recipe on the left side of the touch screen. (note: only Ar and O2 available, consult with NTUF staff for right cleaning time.)
- ☞ Click “Start” on the touch screen. System starts “introducing Gases”, and “Gas flow” becomes “stabilizing”, when “Gas flow” changes to “on”, system starts “Applying power” to clean sample.



# Finish

---

-  Click “Vent” on the touch screen.
-  Take out “TEM sample holder”.
-  Insert “ left side entry holder port”.
-  Click “Vacuum” on the touch screen.