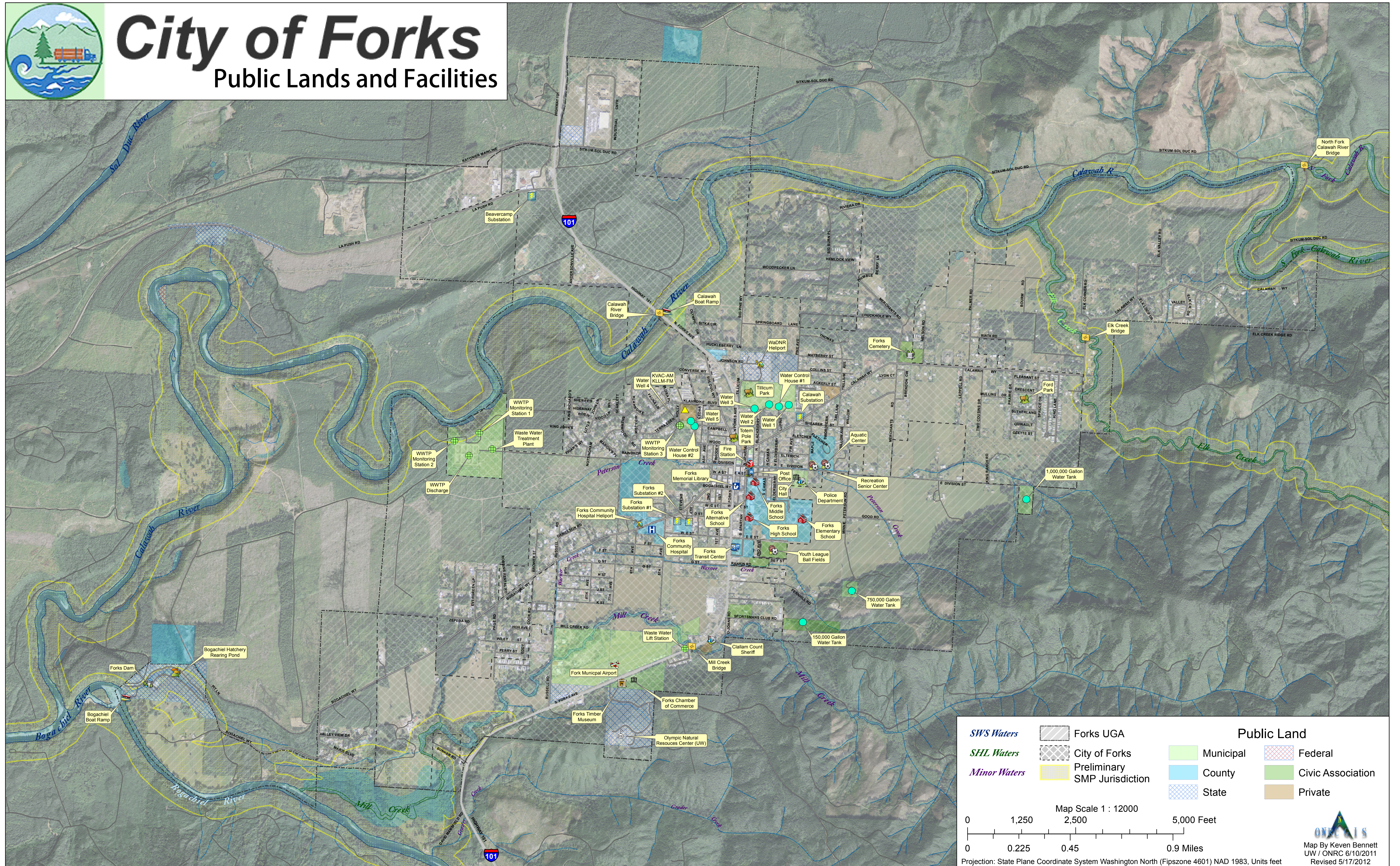




City of Forks

Public Lands and Facilities



<i>SWS Waters</i>	Forks UGA	Public Land	
<i>SHL Waters</i>	City of Forks	Municipal	Federal
<i>Minor Waters</i>	Preliminary SMP Jurisdiction	County	Civic Association
		State	Private

Map Scale 1 : 12000

0 1,250 2,500 5,000 Feet

0 0.225 0.45 0.9 Miles

Projection: State Plane Coordinate System Washington North (Fipszone 4601) NAD 1983, Units feet