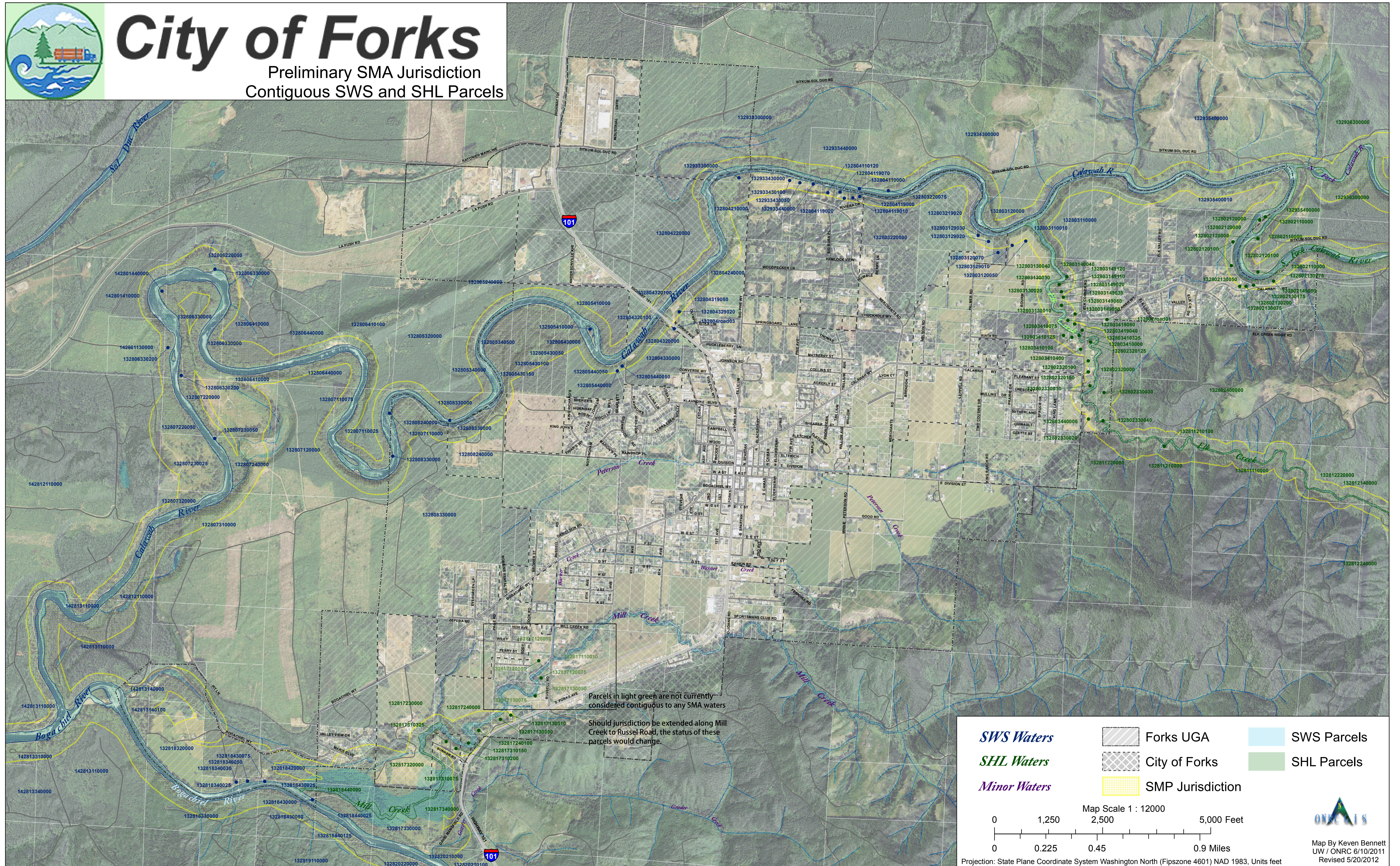




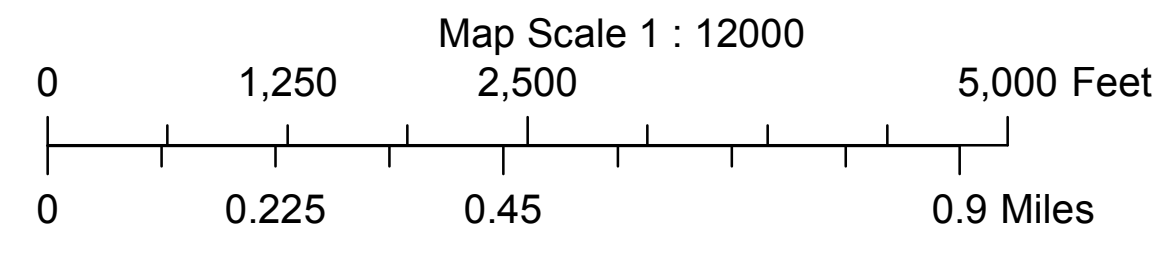
# City of Forks

Preliminary SMA Jurisdiction  
Contiguous SWS and SHL Parcels



Parcels in light green are not currently considered contiguous to any SMA waters  
Should jurisdiction be extended along Mill Creek to Russel Road, the status of these parcels would change.

<i>SWS Waters</i>		Forks UGA		SWS Parcels
<i>SHL Waters</i>		City of Forks		SHL Parcels
<i>Minor Waters</i>		SMP Jurisdiction		



Projection: State Plane Coordinate System Washington North (Fipszone 4601) NAD 1983, Units feet



Map By Keven Bennett  
UW / ONRC 6/10/2011  
Revised 5/20/2012