

# Waterfront Park

along Post Alley

## The Waterfront

- Shoreline retreats to just west of 1<sup>st</sup> Ave due to sea-level rise
- Promenade along shore
- Sloping natural beach
- Passenger only ferry dock established
- Alaskan Way tunnel becomes shallow water habitat

# Downtown Cascade

6<sup>th</sup> Avenue to Western Avenue

## Downtown

- Water cascades integrated into sidewalks of Madison
- Fourth Avenue becomes green street
- Third Avenue transit only
- High density business, retail and office
- Pocket parks, plazas and dynamic people places

# East Edge Neighborhood

9<sup>th</sup> Avenue to 6<sup>th</sup> Avenue

- Expanded lid on I-5
- Collects and distributes water captured and flowing along Madison
- Arboretum plants
- Interpretive and event center
- Development on west edge of lid linking to downtown

# Cherry Hill Village

on First Hill Broadway to Boren

## Regeneration

- Healing neighborhood
- Visually linked open spaces
- Green space corridors connect hospitals to open space
- Reinforce multiple uses along Madison
- High-density residential throughout



## Connection to the Elements

- Wind turbines on axis of docks atop tunnel
- Deep water cooling system runs up Madison to service Cherry Hill and Downtown
- Tidal energy generation on flexing floating docks
- Green roofs and solar collectors throughout

# Madison Ridge

12<sup>th</sup> Avenue E. to 17<sup>th</sup> Avenue E.

## 12<sup>th</sup> to Broadway

- Water storage park west of 12<sup>th</sup> Avenue collecting run off from surrounding urban watershed
- Mixed-use development facing onto the park

## 15<sup>th</sup> & Madison

- Village green at Madison and Pike/Pine with transit hub
- High-density mixed-use facing onto village green
- Pocket parks from 15<sup>th</sup> to 12<sup>th</sup> Avenue E.
- Visible rainwater conveyance and ponding in the pocket parks.

## 17<sup>th</sup> & Madison

- Mixed-use 20 and 30 story residential towers at city highpoint visible around region
- Sculptural design with spires, wind turbines, and cascading water flowing east and west down Madison Avenue
- High-density residential mid-rises transitioning out to lower density neighborhood



# Madison Junction

at 23<sup>rd</sup> & Madison

- Mixing & Mingling
- People collecting and connecting
  - Building plazas facing onto intersection
  - High density work/live/play spaces
  - Dynamic business district

- Junction
- Transit hub east/west and north/south
  - Identity paving to distinguish junction

- Collection & Conveyance
- Building-integrated solar collection
  - Wind gathering and utilization
  - Water collecting, cascading and distribution

# Arboretum Village

in Madison Valley

- Urban village along Madison Avenue
- Village square and transit stop at Madison Avenue and Martin Luther King Jr Boulevard
  - High density, mixed-use transitioning to lower density multifamily and single family residential in vicinity of Madison Avenue at Martin Luther King Jr. Boulevard and at Lake Washington Park Boulevard

- Madison Avenue Bridge
- Trestle bridge spanning Arboretum Creek
  - Street car and personal vehicle route
  - Pedestrian walks connecting ends of the Madison Valley urban village
  - Exposing the historical stream channel
  - Creating a wetland reservoir to feed the stream and reuse in the surrounding community.

- The Village Green
- Connection between Arboretum and urban village
  - Green streets conveying and expressing water on it's way to the Arboretum
  - Terraced gathering place, playground, strolling paths



# Madison Park

at Madison Park



## Ferry Terminal

- Street car terminus
- Ferry dock as public water park
- Passenger ferry for foot traffic
- Connection to points east, south, west and north

## Waterfront Park

- Removal of 43<sup>rd</sup> Avenue and connecting upper & lower parks
- Removal of residences and connecting waterfront parks
- Regeneration of natural shoreline
- Introduction of submerged habitat island

**Waterfront Park**  
along Post Alley

- The Waterfront**
- Shoreline retreats to just west of 1<sup>st</sup> Ave due to sea-level rise
  - Promenade along shore
  - Sloping natural beach
  - Passenger only ferry dock established
  - Alaskan Way tunnel becomes shallow water habitat

**Downtown Cascade**  
6<sup>th</sup> Avenue to Western Avenue

- Downtown**
- Water cascades integrated into sidewalks of Madison
  - Fourth Avenue becomes green street
  - Third Avenue transit only
  - High density business, retail and office
  - Pocket parks, plazas and dynamic people places

**East Edge Neighborhood**  
9<sup>th</sup> Avenue to 6<sup>th</sup> Avenue

- Expanded lid on I-5
- Collects and distributes water captured and flowing along Madison
- Arboretum plants
- Interpretive and event center
- Development on west edge of lid linking to downtown

**Cherry Hill Village**  
on First Hill Broadway to Boren

- Regeneration**
- Healing neighborhood
  - Visually linked open spaces
  - Green space corridors connect hospitals to open space
  - Reinforce multiple uses along Madison
  - High-density residential throughout

**12<sup>th</sup> to Broadway**  
Water storage park west of 13<sup>th</sup> Avenue collecting run off from surrounding urban watershed

- Mixed-use development facing onto the park

**Madison Ridge**  
12<sup>th</sup> Avenue E. to 17<sup>th</sup> Avenue E.

- 15<sup>th</sup> & Madison**
- Village green at Madison and Pike/Pine with transit hub
  - High-density mixed-use facing onto village green
  - Pocket parks from 15<sup>th</sup> to 12<sup>th</sup> Avenue E.
  - Visible rainwater conveyance and ponding in the pocket parks.

- 17<sup>th</sup> & Madison**
- Mixed-use 30 and 30 story residential towers at city highpoint visible around region
  - Sculptural design with spires, wind turbines, and cascading water flowing east and west down Madison Avenue
  - High-density residential mid-rises transitioning out to lower density neighborhood



- Connection to the Elements**
- Wind turbines on axis of docks atop tunnel
  - Deep water cooling system runs up Madison to service Cherry Hill and Downtown
  - Tidal energy generation on flexing floating docks
  - Green roofs and solar collectors throughout

**Madison Junction**  
at 23<sup>rd</sup> & Madison

- Mixing & Mingling**
- People collecting and connecting
  - Building plazas facing onto intersection
  - High density work/live/play spaces
  - Dynamic business district
- Junction**
- Transit hub east/west and north/south
  - Identity paving to distinguish junction
- Collection & Conveyance**
- Building-integrated solar collection
  - Wind gathering and utilization
  - Water collecting, cascading and distribution

**Arboretum Village**  
in Madison Valley

- Urban village along Madison Avenue**
- Village square and transit stop at Madison Avenue and Martin Luther King Jr Boulevard
  - High density, mixed-use transitioning to lower density multifamily and single family residential in vicinity of Madison Avenue at Martin Luther King Jr. Boulevard and at Lake Washington Park Boulevard
- Madison Avenue Bridge**
- Trestle bridge spanning Arboretum Creek
  - Street car and personal vehicle route
  - Pedestrian walks connecting ends of the Madison Valley urban village
  - Exposing the historical stream channel
  - Creating a wetland reservoir to feed the stream and reuse in the surrounding community.

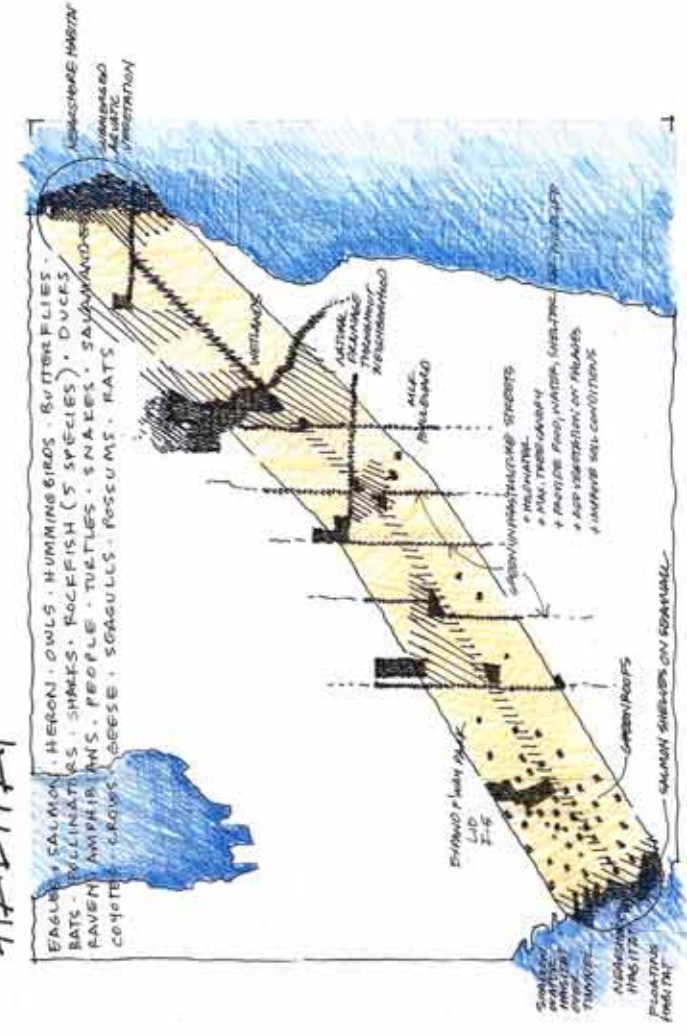
- The Village Green**
- Connection between Arboretum and urban village
  - Green streets conveying and expressing water on it's way to the Arboretum
  - Terraced gathering place, playground, strolling paths



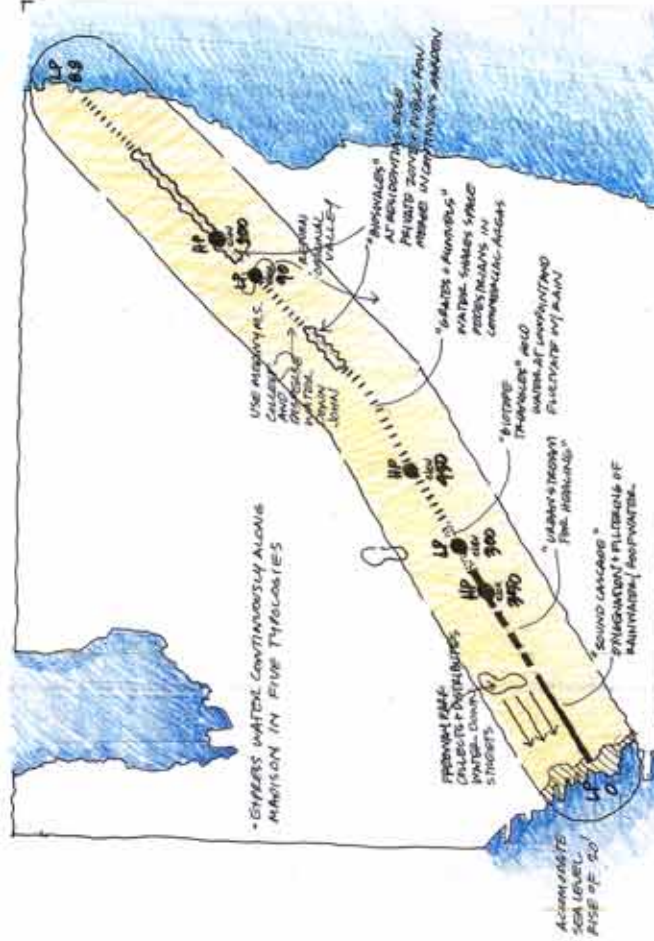
- Ferry Terminal**
- Street car terminus
  - Ferry dock as public water park
  - Passenger ferry for foot traffic
  - Connection to points east, south, west and north

- Waterfront Park**
- Removal of 4<sup>th</sup> Avenue and connecting upper & lower parks
  - Removal of residences and connecting waterfront parks
  - Regeneration of natural shoreline
  - Introduction of submerged habitat island

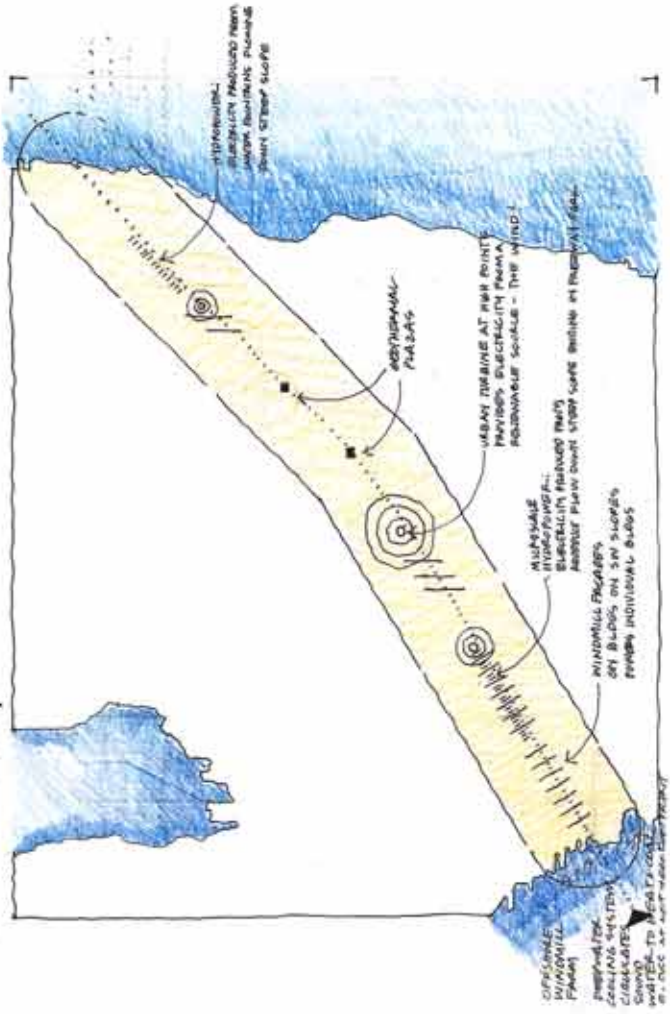
HABITAT



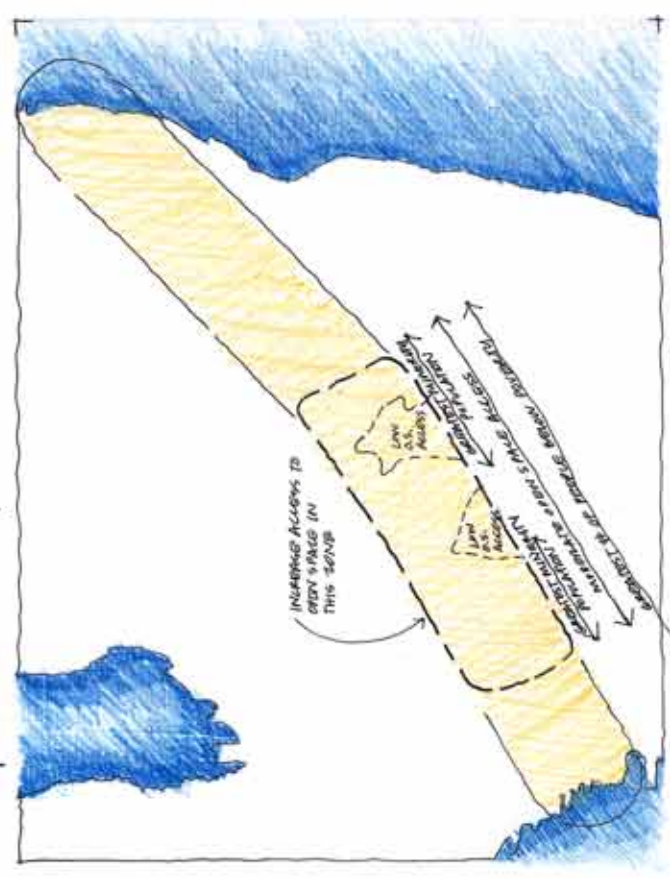
WATER



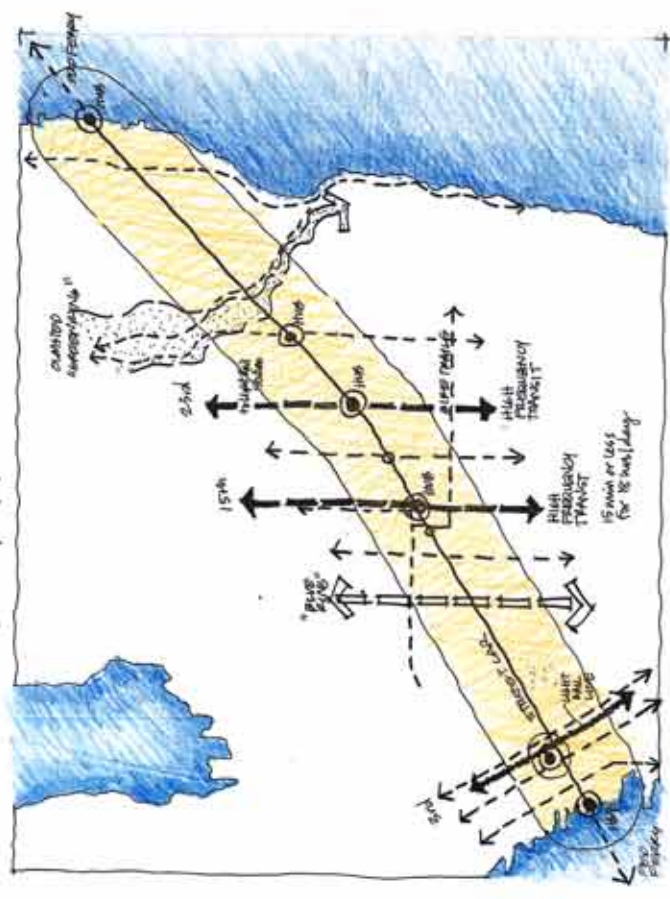
ENERGY



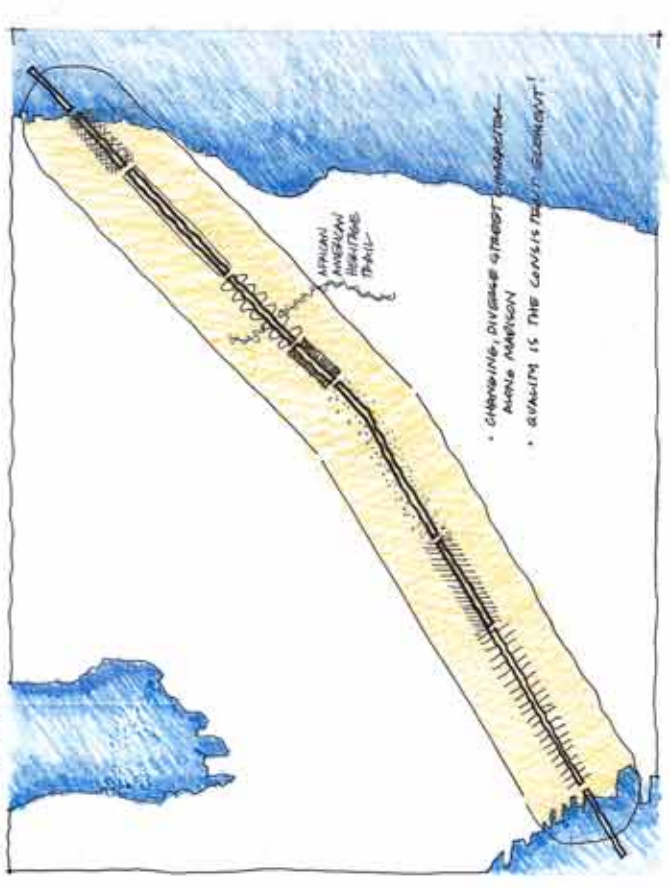
SOCIO-ECONOMIC + OPEN SPACE ACCESS

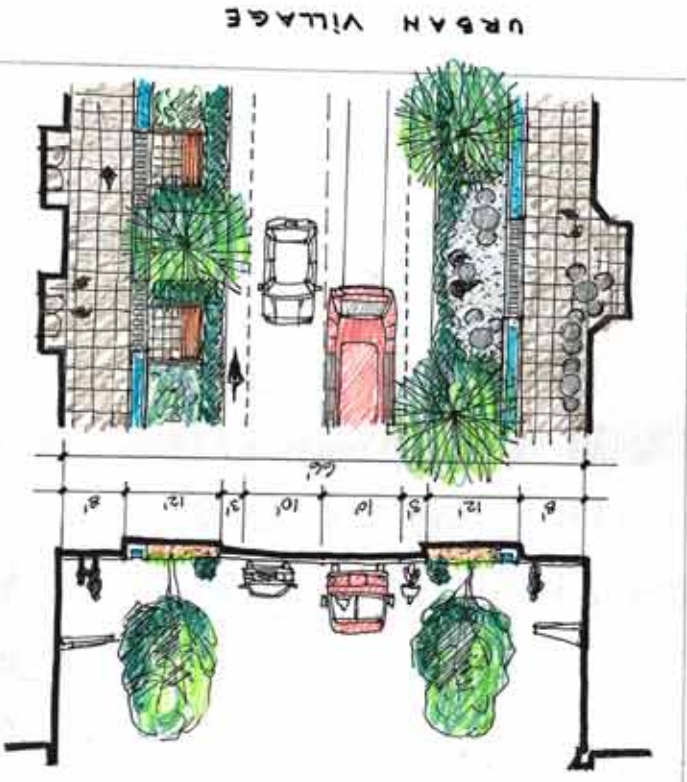
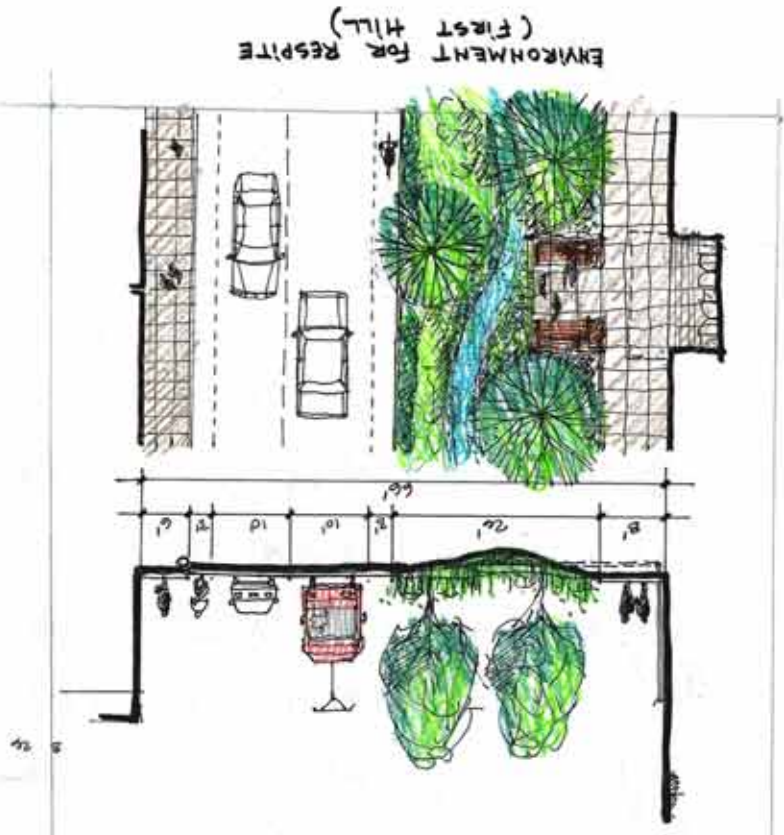
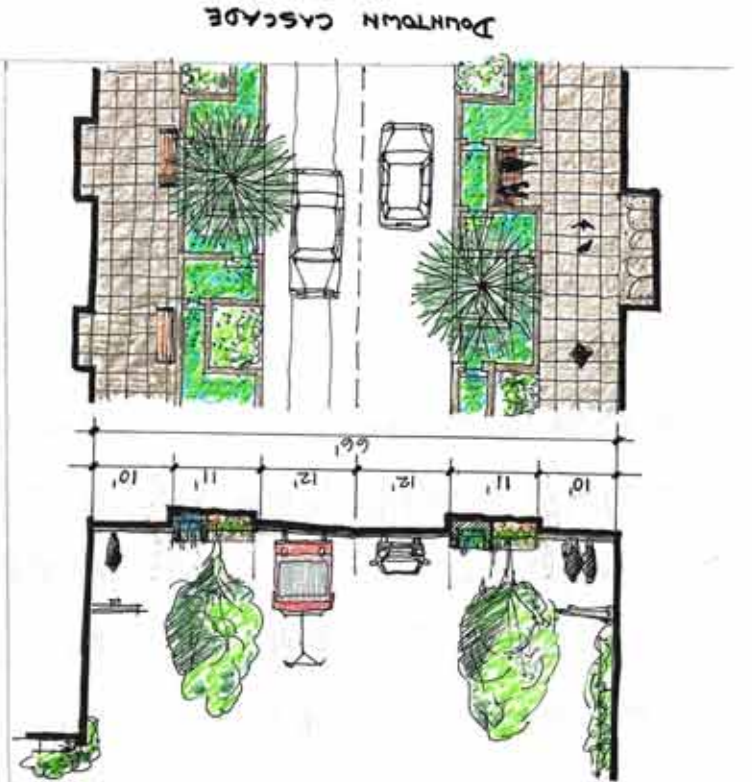
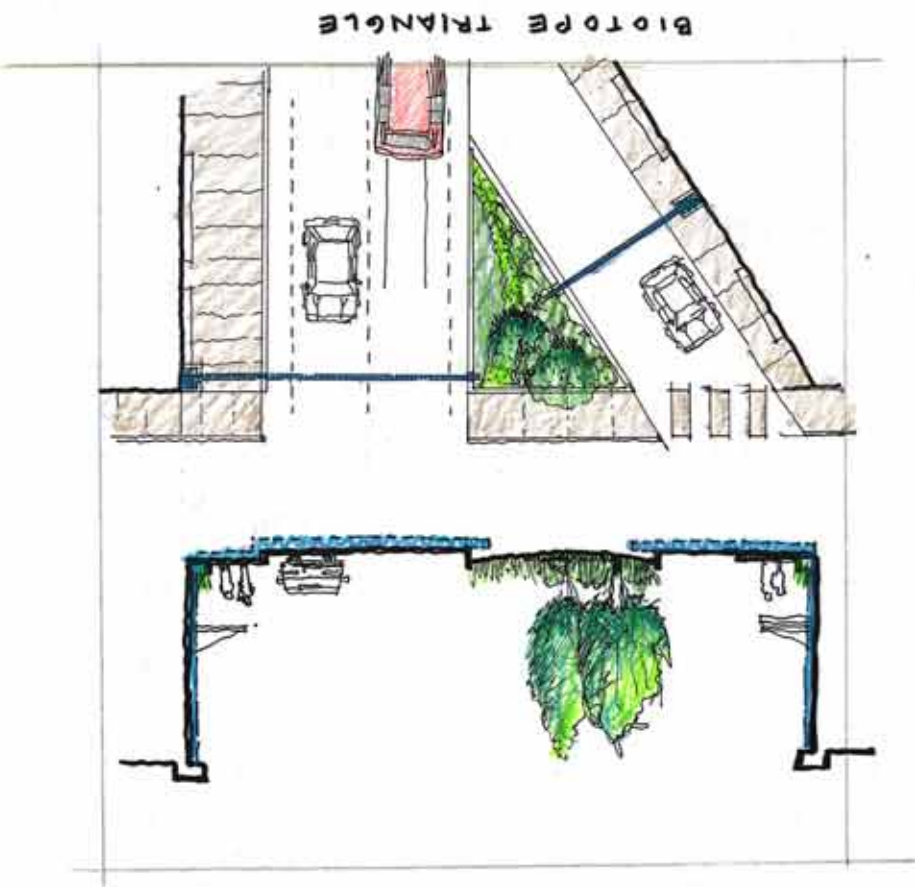
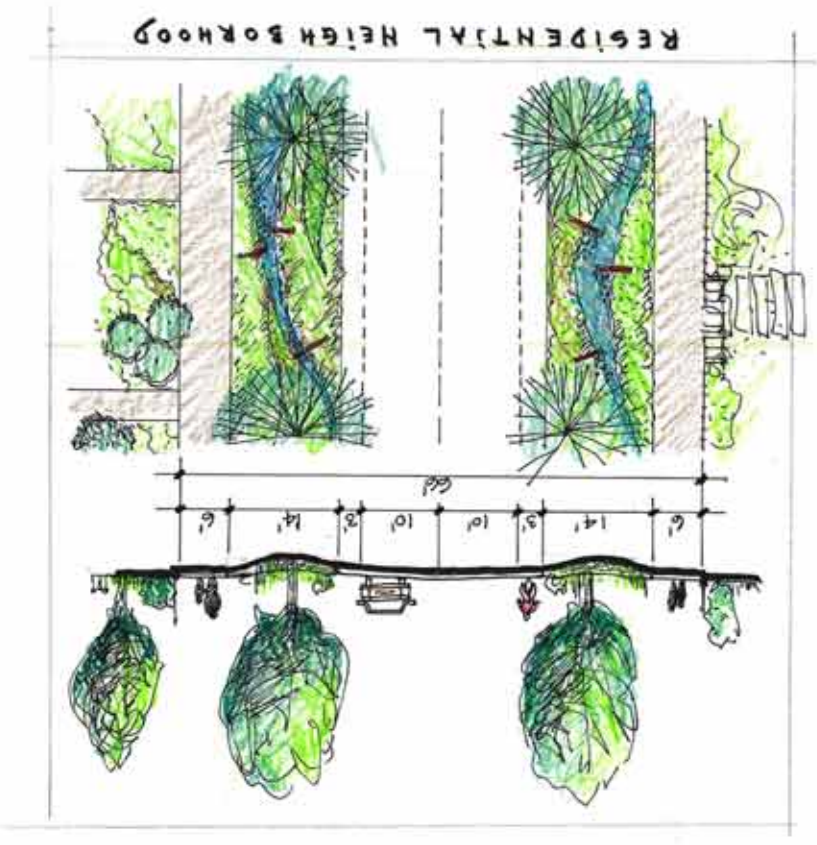


TRANSPORTATION

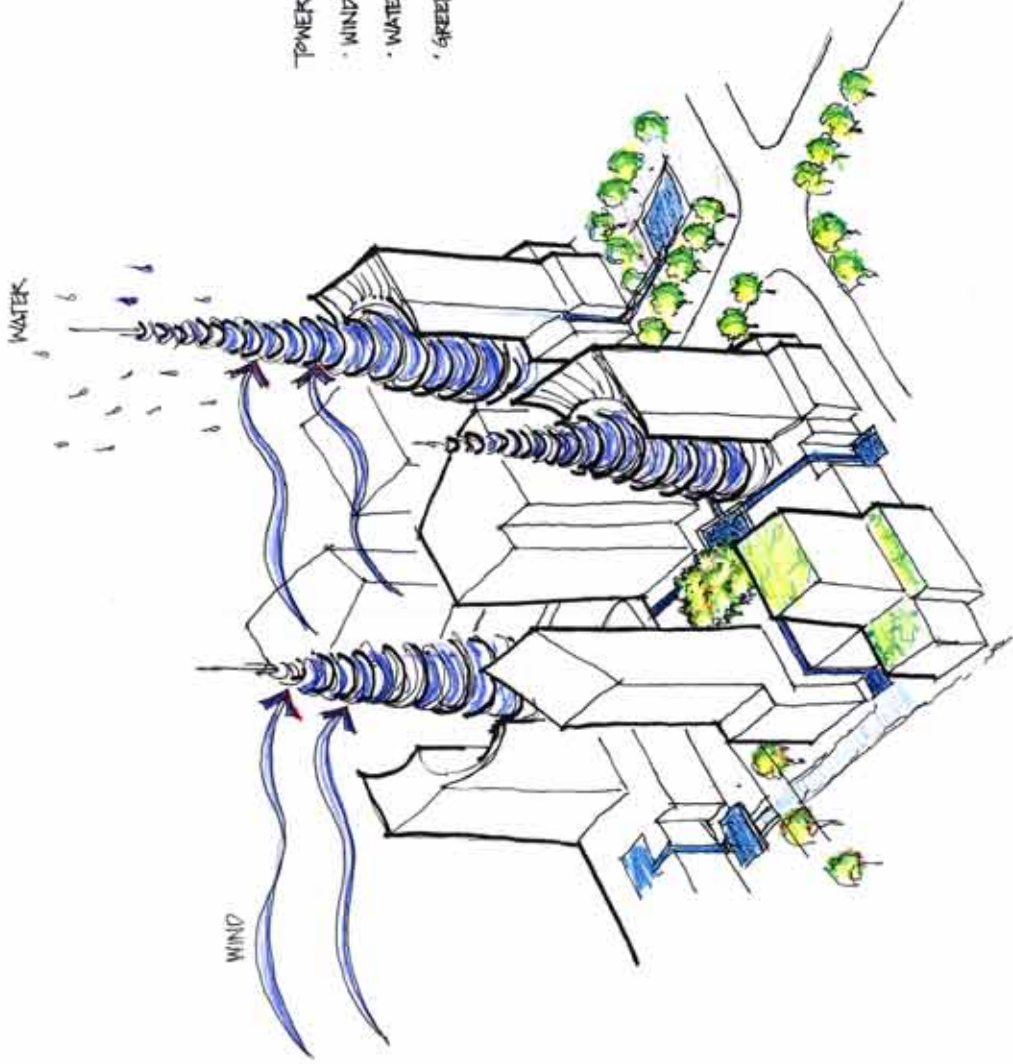


MOSAIC

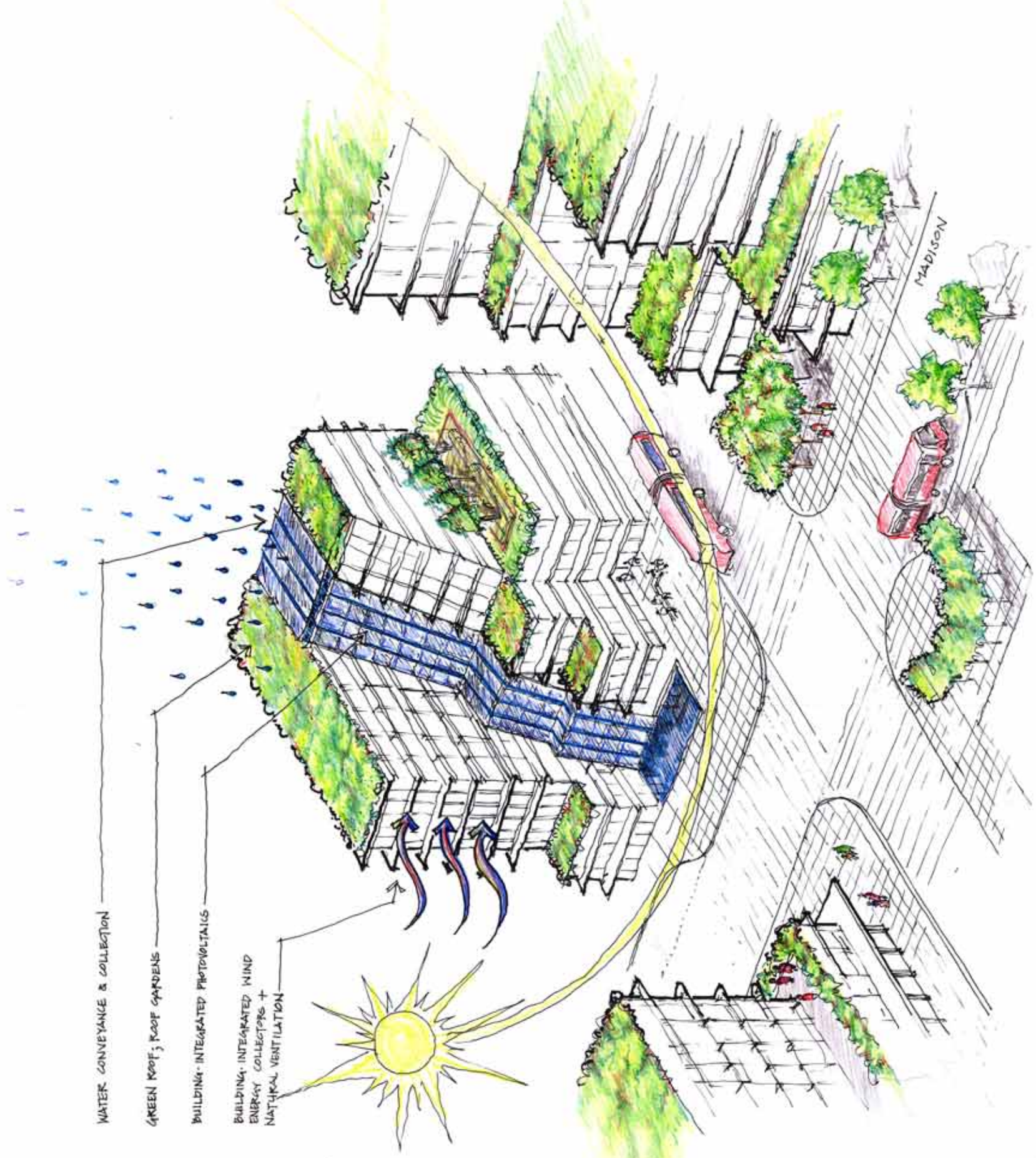




- TOWERS ON THE MOUNTAIN:
- WIND ENERGY
- WATER COLLECTION & CONVEYANCE
- GREEN ROOF TERRACES



# MADISON TOWERS



# MADISON JUNCTION