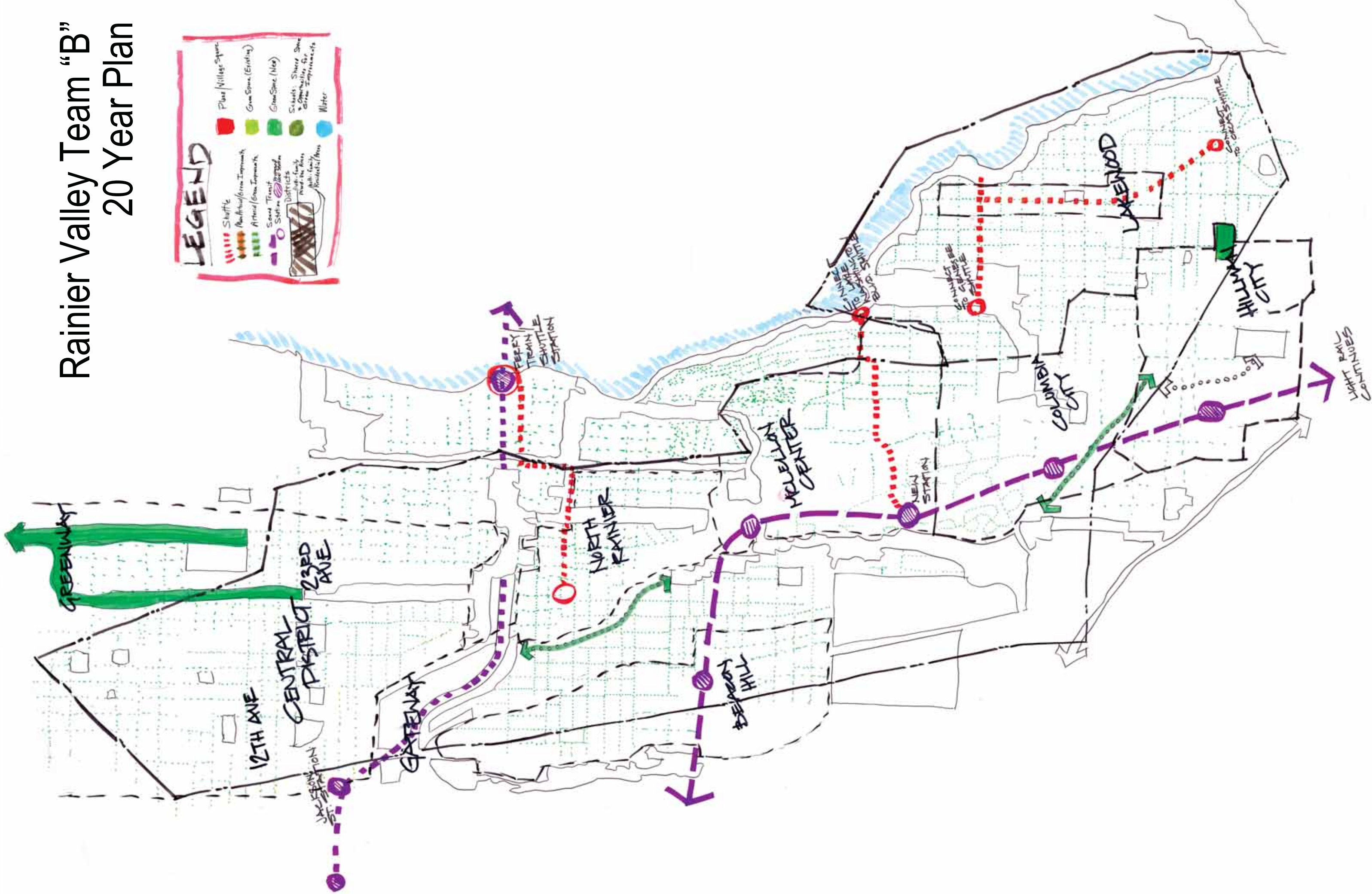


Rainier Valley Team "B" 20 Year Plan



RAINIER VALLEY: PROSPER IN PLACE *EVERYTHING WE NEED IS HERE*

Rainier Valley Team “B” or, the *Prosper in Place Team (PIP)*, is composed almost entirely of people who live in and love Rainier Valley. Our vision responds both to our appreciation of the place of Rainier Valley in the City in the present and into the future; and to our nuanced understanding of the existing physical place and its history. At present, in terms of cultural resources and physical topography, Rainier Valley is rich. However, in many other ways, the residents and workers of Rainier Valley are underserved in terms of daily needs. Typical of so many Seattle neighborhoods, north-south circulation in Rainier Valley is easy, while cross town connections represent a significant obstacle to coherent movement.

To address the issues of mobility, access, equity, environment, education and economy, we envision a future where the neighborhood is self-sufficient, that is, everything a person might need is available in situ—recreation, goods, services and employment. While we have strong functional connections to downtown and other neighborhoods via automobile routes and public transportation, we have urgent need of improved multi-modal access in and out of our neighborhood. We are also an important crossroads for cross-lake automobile traffic to downtown as well as the Mountains to Sound Greenway bicycle commuters. The PIP team has developed scenarios for both anticipated **demographic density and resource scarcity**. By interweaving economic nodes into the fabric of green infrastructure, the team has undertaken to both **enhance cultural vitality and protect natural resources**.

Rainier Valley Team “B”
Concept Diagram



The PIP team appreciates that our community and our watershed can only remain viable for 100 years by pairing density with open space and thereby emphasizing both **sustainability and self-reliance**.

Our view is both **introspective and holistic**; we look in (refuge) to both social and natural resources in the watershed while investing in city and regional connectivity and infrastructure (vantage). We envision a place that fully embraces its **geographic location, natural resources and cultural diversity**. With this in mind, we strive to maintain strong community bonds through efforts to build the **rich palette of opportunities and resources** within the watershed, while maintaining important linkages to the greater region.

We examined six key areas of concern:

Business

- Limited business access to parks
- Localized mini-plazas, benches, etc.

- Pedestrian, bike ways connect to nodes
- Commercial adjacent to parks
- Protect pedestrian corridors

Culture

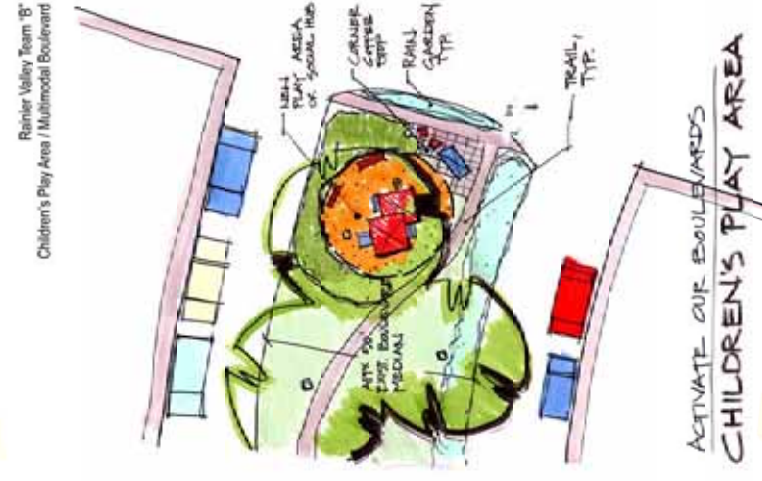
- Plaza for every road
- Scaled spaces from city to watershed to neighborhood to block
- Woonerfs
- Mini plazas
- Use of schoolyards and churches as open space
- Covered rain places for cultural gathering
- Integration of public art into street and ecological infrastructure
- Emphasize connections with past
- Fitness
- Express major Cedar River water supply pipeline

Habitat

- Habitat connections/corridors
- Signature, ambitious creek expression along main corridor
- Wildlife preserves, sharing etc.
- Habitat-friendly rules
- Green streets everywhere
- Localize stormwater retention – infiltration on small and large scale
- Daylighting stormwater, or making its importance understood

Transportation

- Multimodal corridors
- Short trip shuttle corridors, shared with bikes, east-west emphasis
- Arboretum to Rainier Beach non-motorized way
- Dedicated bike lanes



Rainier Valley Team B
Gateway to Rainier Valley



Rainier Valley Team B
Gateway to Rainier Valley



- Response to light rail
- Gateway from I-90 and from downtown
- Increased pedestrian and non-motorized options and networks
- Increased feeders with shuttles, light rail, trolleys
- Grade separation at MLK and Rainier

Recreation

- Combined pedestrian and recreation corridor
- Good types of picnic facilities
- Active paved recreation
- Maximize or convert school properties for public education
- Soft surface running trails
- More community recreational centers and pools
- Swimming beaches

Agriculture

- P-patches
- Markets and market/commercial gardens

The essential goals of the group are to:

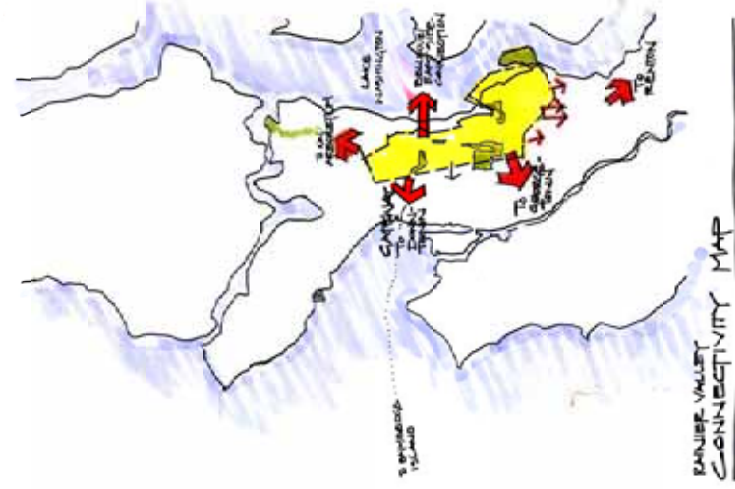
- Embrace the **opportunities offered by increased density**, including the inclusion and expansion of urban nature.
- Achieve **equity** in both affordable housing and sufficient access to open space
- Restore the **function and character** of Rainier Valley's natural and historic footprint
- **Stimulate social life** by creating gathering spaces at a variety of scales from the block to the neighborhood and stimulating the use of open space, by introducing activities and services to open spaces, and close proximity of a variety of uses.

- Provide a variety of recreation experiences with equal access
- Emphasize and enhance Rainier Avenue as a **central and vital axis or spine** contributing to the overall support and maintenance of a healthy community

LINKAGES

Linkages and connections, in terms of habitat, mobility, and legibility are central to the maintenance of the community. Major multimodal transportation axes coupled with public transportation and non-motorized spurs and spines will comprise a green transportation armature that includes significant additions of vegetation and water features. Missing corridors will be re-linked for wildlife. Depending on needs, some portions of the street grid will be reconfigured for habitat and open space only and other portions of the grid will be opened for greater transportation mobility.

Rainier Valley Team "B"
Greater Seattle Connectivity Map



Green links play an integral role in the expansion of urban villages north and south which will ultimately incorporate light rail, transit hubs and street car links. Gateways are enhanced to demarcate and celebrate the entrances from downtown to the west, I-90 to the east and Columbia City/Orcas Street to the south.

Green space will be acquired and developed where feasible and augmented with a network of green boulevards, large (churches, schools, private business) institutions, private yards, green roofs and walls, and “water” streets, as well as active implementation of mitigation plans.

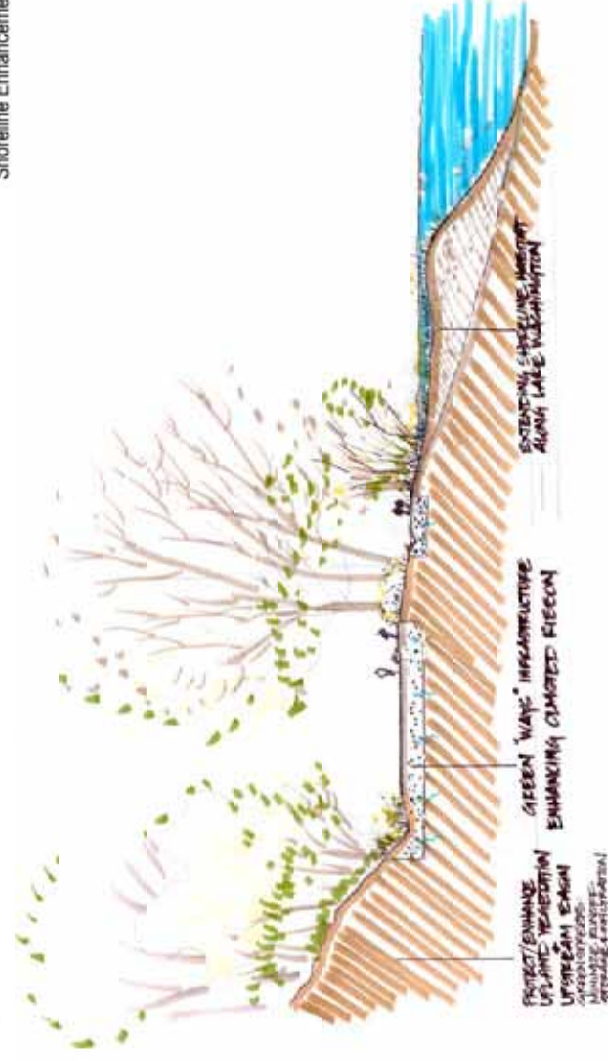
Communities will be linked to central gathering places, a series of large (civic) and small (neighborhood) scale gathering spaces, each with a distinct character. Where the community core is a quiet, green place, uses will radiate from low to high from the center of that core. Where the heart of a neighborhood is commercial or oriented toward a transit station, intensity of uses will be graduated from high intensity at the central core to lower intensity at the transitional periphery.

WATER AND HABITAT

Additional finer scale steps include utilizing water resources as open space opportunities both in terms of protecting and creating habitat and recreational opportunities, as well as referencing the importance of water in more metaphorical ways. CSOs will be eliminated in sensitive habitat and swimming areas through the creation of green streets/natural drainage. This will minimize stormwater runoff, maximize infiltration, and provide habitat for birds, amphibians and small mammals, as well increase property and aesthetic values. The establishment of green streets will provide a logical foundation for the establishment of pedestrian and bicycle trails and

opportunities for small pocket parks along the drainage routes. Where topography mitigates against natural drainage, other wayfinding devices that meaningfully demarcate water will be utilized to provide continuous non-motorized mobility.

Rainier Valley Team "B"
Shoreline Enhancements

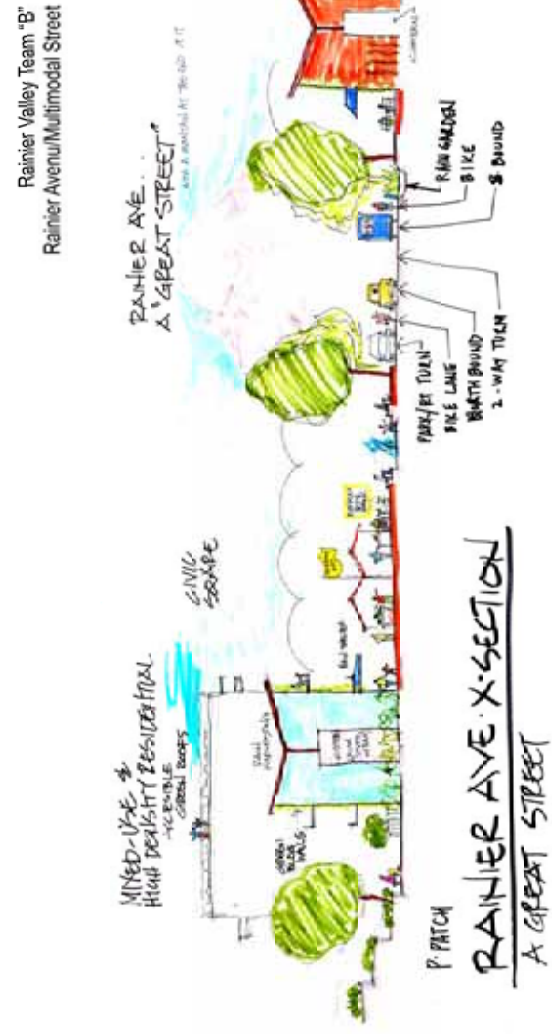


SOCIAL LIFE

The green grid will be further enhanced through the linking of pocket parks, p-patches and steep slopes converted to urban forests and other green spaces. Urban cores will be demarcated through a series of both civic (large-scale) and neighborhood (small-scale) squares that form the nodes or vertebrae of the axial spine of Rainier Avenue, Beacon Avenue and Martin Luther King. Additional cultural gathering spaces will be created through the lidding of the intersection at Martin Luther King and Rainier Avenue. These central gathering spaces, or village greens, will be enhanced by both permanent and ephemeral features such as seating, water features, performance, retail, and other cultural amenities. Community gardens located at grade and on rooftops will augment the availability of local produce as well as helping to address the urban heat islands, water interception and infiltration.

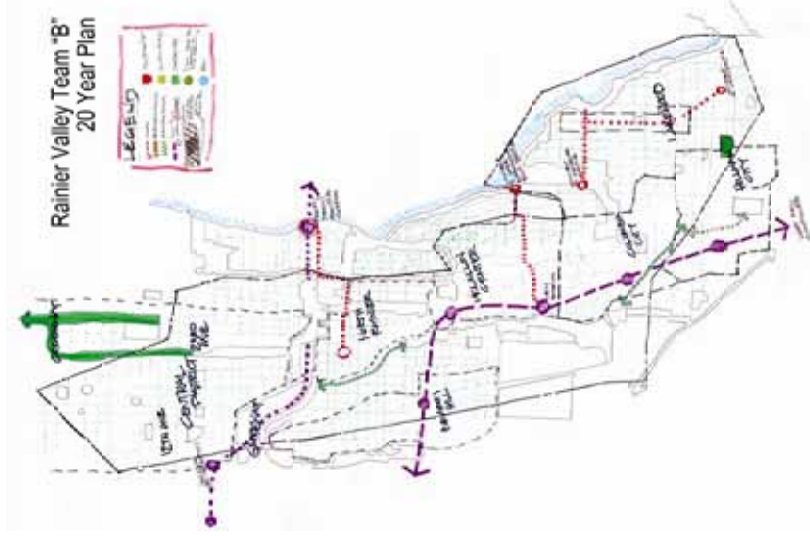
- We advocate joint management of school lands by the school district and the Parks Department. Seattle currently has twice as much school capacity as needed. Schools that are to be closed should be recycled as combo recreational resources with the buildings used for commercial uses. In the future when the schools are needed again, the schools will be built in a more compact way, leaving the site as an open space recreational resource for the entire community.
- A Civic Square for Every Neighborhood business / high density residential center
- Cross valley access for every neighborhood center, either pedestrian/bike or shuttle.
- More Pools
- Localized mini-plazas, benches, etc., associated for instance with businesses
- In the single-family plus mother-in-law zones, small social areas, such as a bench and composting center at a block or several block level
- Link joint park/school sites on public green walkways

- Activate passive green spaces in neighborhoods, such as boulevards, by including picnic areas, play areas, benches, and dog parks interspersed with unprogrammed green and habitat space



ENERGY

Utilities are localized, as most buildings will integrate green building principles, including recycled materials, rainwater harvest, solar collection (with improved technologies), waste and wastewater use and reuse. Wind power will be generated at locations where turbulence is a constant, with the opportunity to utilize power produced locally and/or sell energy back to the City for additional monies or open space acquisition. Sound Transit will install a new braking system which generates electricity to feed back into the grid.



20-YEAR PLAN

The 20-year plan takes into account current planning documents (neighborhood and city) as well as the intimate knowledge of residents of the watershed, the communities, and the dynamics of existing land use and transportation patterns. The 20-year plan augments or creates trails, wayfinding devices, and natural drainage streets and embraces the current planning for Sound Transit Light Rail. Combined sewer overflows (CSOs) are largely eliminated by the construction of green streets. In the next 20 years, the City accomplishes this by identifying and prioritizing those streets with the most impact on the individual CSO subbasins. We assume all streets are constructed as green streets, minimizing runoff, maximizing infiltration, and providing habitat with native plantings.

We envision an interconnected network of efficient and multimodal transportation, including a focus on a variety of non-motorized vehicles and pedestrians. We have identified missing corridors required to complete this mission. This includes light rail connections between the Eastside and Rainier Valley, and a number of small bus or rail lines.

Density is moderated by pocket gardens on each block and identifying a number of steep slopes as open space. Quality of life is enhanced by plazas in each commercial core, and by careful consideration of adjacent uses – commercial activities that enhance public gathering spaces (like an espresso cart at the dog park) or picnic plazas near open air markets and clusters of dining places.



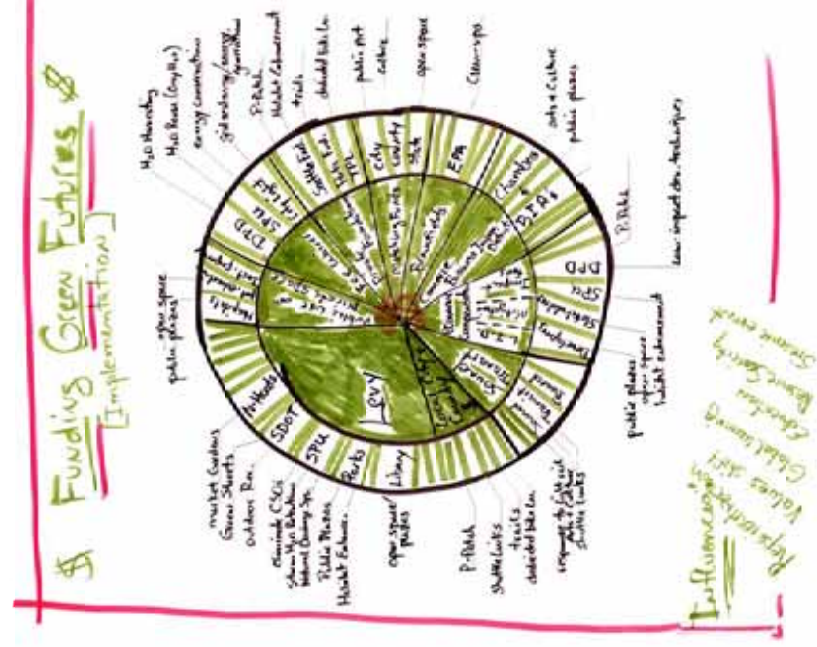
100-YEAR PLAN

The 100-year plan uses broader strokes to describe a watershed replete with a highly integrated and interconnected network of multimodal arterials and streets, with the understanding that current modes of motorized transport technologies may change radically in the future. Rainier Valley will remain as welcoming a place for future immigrant communities as it is today, offering opportunities to maintain cultural identities while connecting to the fabric of the community through open spaces that provide gathering places, recreation, agriculture and ecosystem function.

IMPLEMENTATION

An elaborate system of funding and implementation has been explored through the augmentation of current funding mechanisms and the creation of new sources. These include: levies, fee waivers, private foundations, public use of private spaces, brownfield funding, matching funds, and commercial business improvement districts. Further, energy generated through wind power, methane production, water harvesting and reuse and grid exchange will be sold back to the city in exchange for additional funding.

Rainier Valley Team "B"
Implementation Strategies



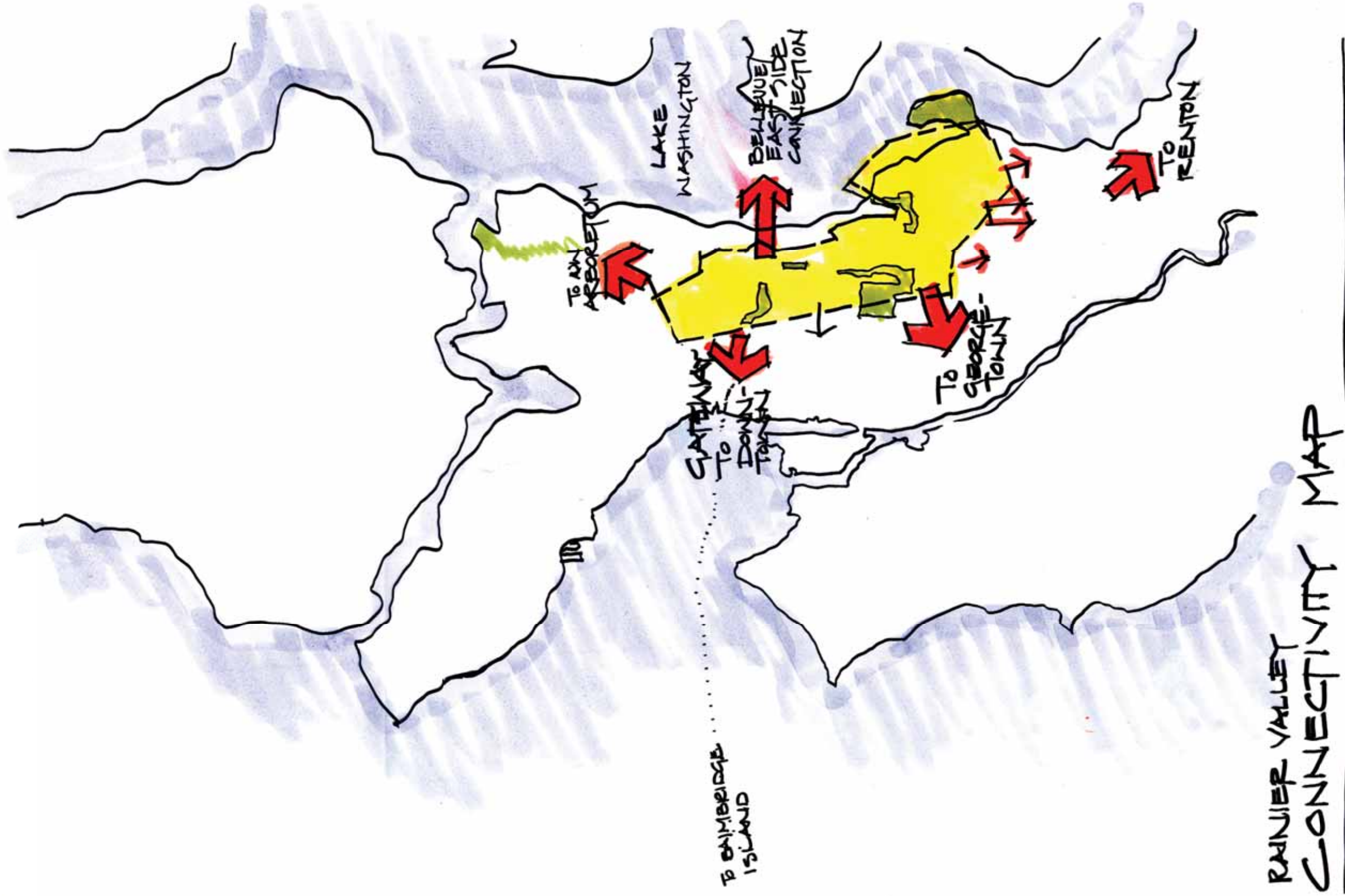
Rainier Valley Team "B" 100 Year Plan

LEGEND

Shuttle	Plaza/Nillage Square
Multi-use Green Improvement	Green Space (Existing)
Aerial/Green Improvement	GreenSpace (New)
Street Transit Station	Schools, Shores, Shores Green Improvements
DISTRICTS Mid-City Mid-City Mid-City	Water
DISTRICTS Mid-City Mid-City Mid-City	
DISTRICTS Mid-City Mid-City Mid-City	



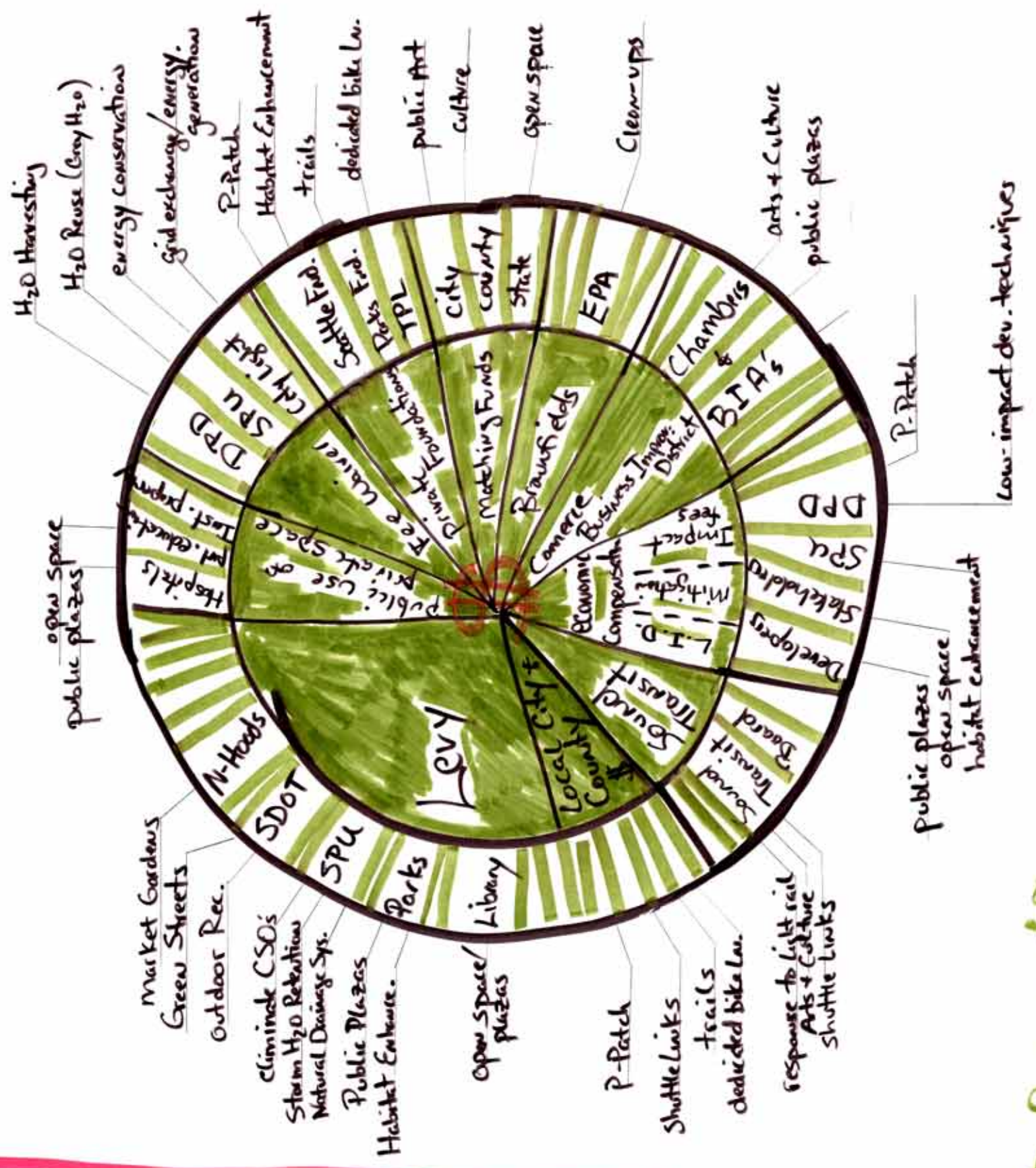
Rainier Valley Team "B"
Greater Seattle Connectivity Map





Rainier Valley Team "B"
Implementation Strategies

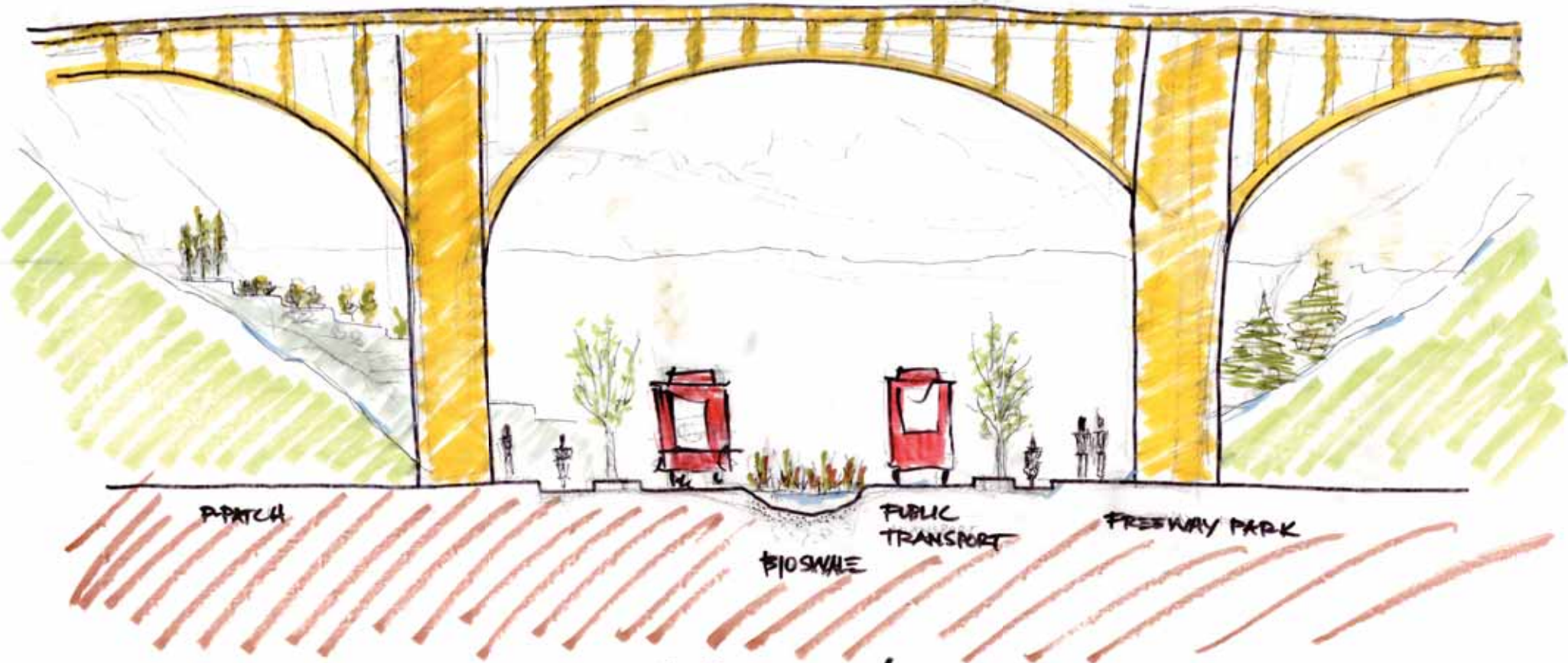
\$ Funding Green Futures & [Implementation]



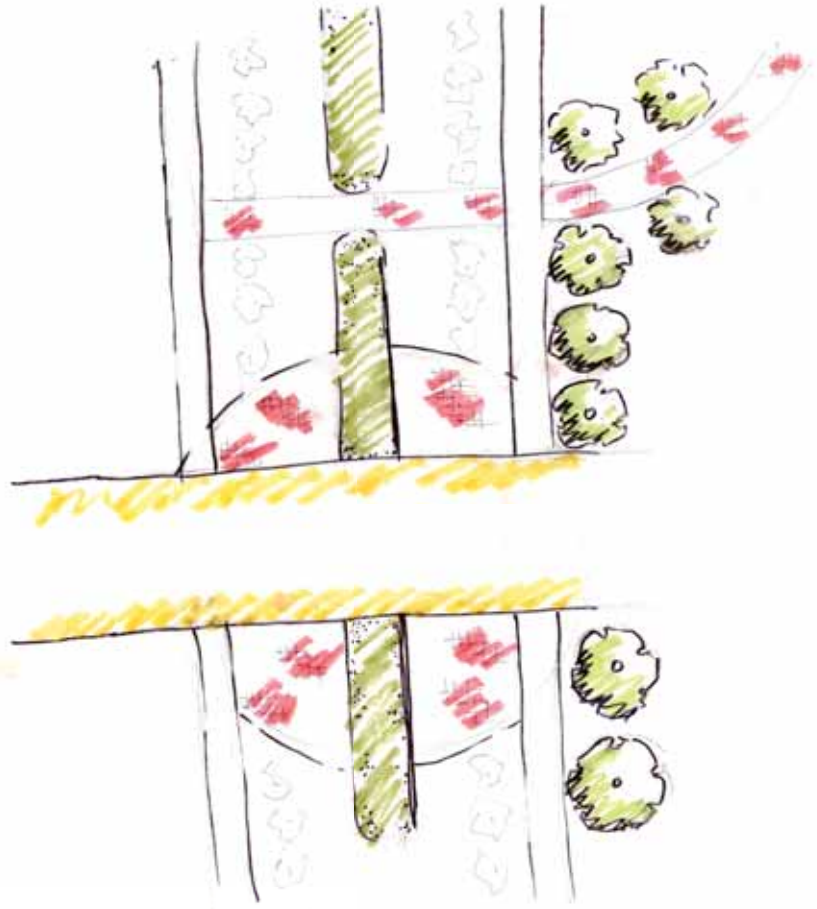
Influencing:
 Reprioritization
 Values Shift
 Global Warming
 Education
 Resource Scarcity
 Seismic event

GATEWAY TO RAINIER VALLEY

12TH AVE BRIDGE @ DEARBORN

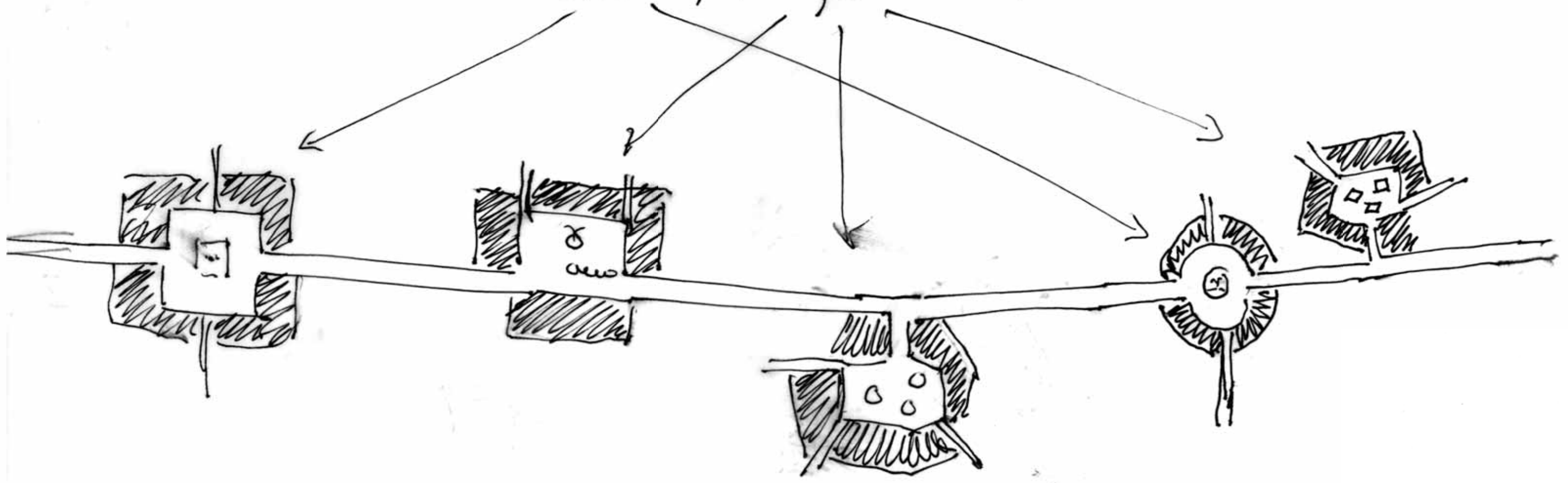


NORTH / SOUTH SECTION
LOOKING EAST



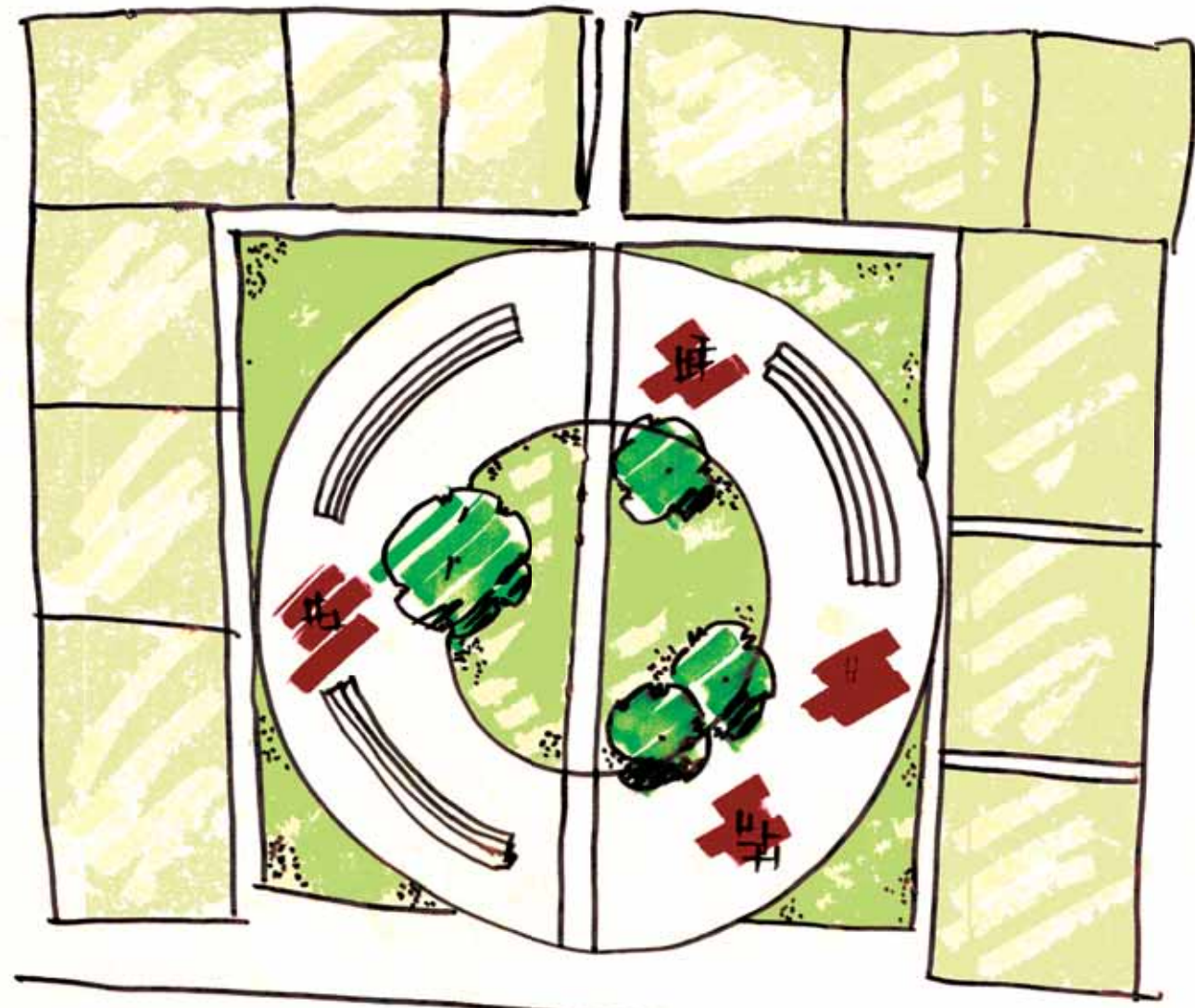
Typology of Squares

civic, neighborhood,



Vertebrae on spine

CIVIC SQUARE



RAINIER

VILLAGE SQUARE / STREET TREATMENT



MODIFIED "SQUARE"



NEIGHBORHOOD SQUARE

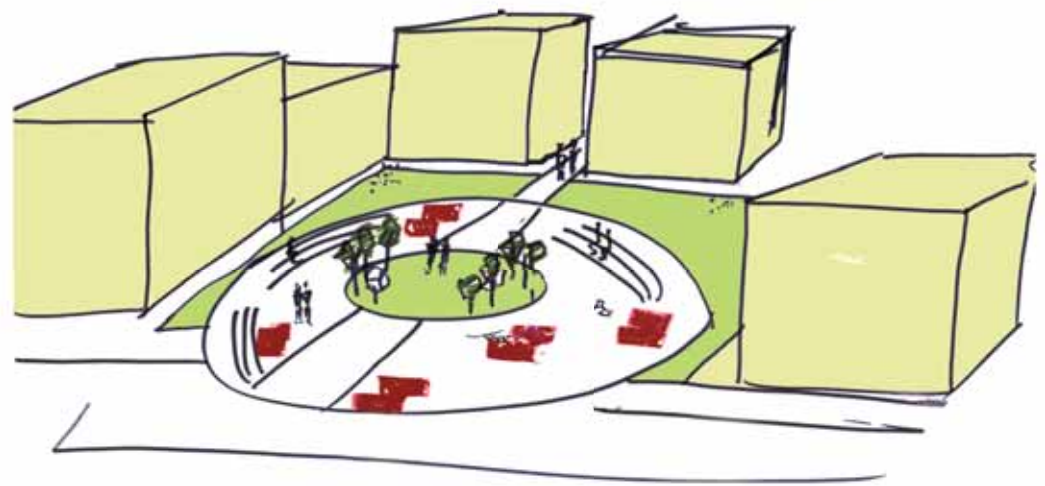


CIVIC SQUARE



INFILTRATION
BOULEVARD
TREATMENT




CIVIC SQUARE VIENNETTE



Rainier Valley Team "B"
Columbia City Open Space



Columbia City

-  multi use urban
-  Green Park
-  Urban Plaza

Village Squares

How do we combine the best of historical tradition with visionary view of future?

Goal: You don't have to leave the neighborhood often

Social Needs

- Buildings highly interactive
- Retail, cultural, government, business, jobs, housing
- Providing both intimate and large group gathering spaces
- Multi-functional spaces: e.g. street markets transforms to concert space
- Public/private partnerships and funding
- Evolves with active management of community

Ecological

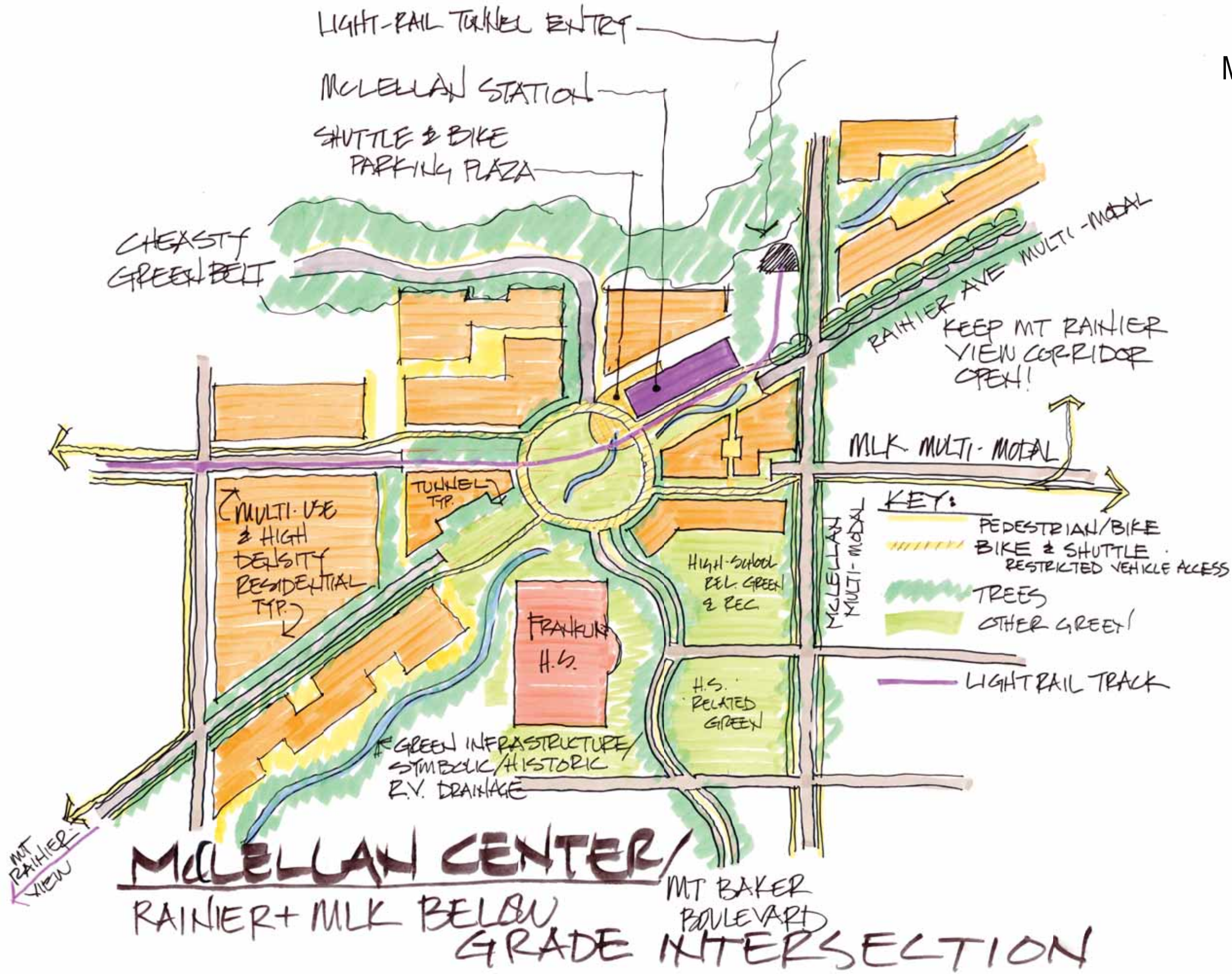
- Stormwater addressed
- Close to community p-patch and commercial garden
- Roof gardens
- Strategies to function in rainy weather

Aesthetic

- Human-scale buildings
- Views
- Public art, fountains
- Shapes of spaces – not always square

Transportation

- Reaches out with tentacles: to parks, p-patches, other squares, central areas, cultural facilities
- How can the negative affects of cars be limited?
- Provides some sense of a resting place—off the transportation grid but accessible to it.



MIXED-USE &
HIGH DENSITY RESIDENTIAL
ACCESSIBLE
GREEN ROOFS

CIVIC
SPACE

RAINIER AVE...
A "GREAT STREET"

...WITH A MOUNTAIN AT THE END OF IT



P-PATCH

RAINIER AVE X-SECTION

A GREAT STREET

PARK/RT TURN

BIKE LANE

NORTH BOUND

2-WAY TURN

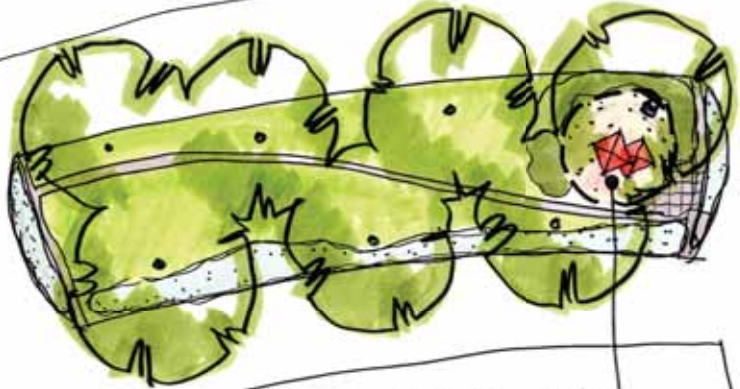
RAIN GARDEN

BIKE

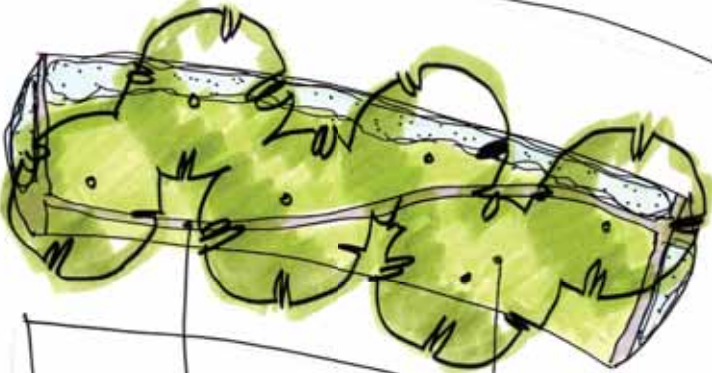
S. BOUND

CISTERNA

ACTIVATE OUR BOULEVARDS

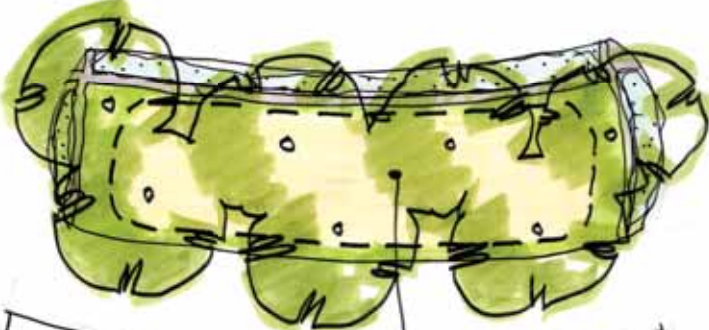


CHILDREN'S
PLAY AREAS



TRAIL,
TYP.

PASSIVE
GREEN

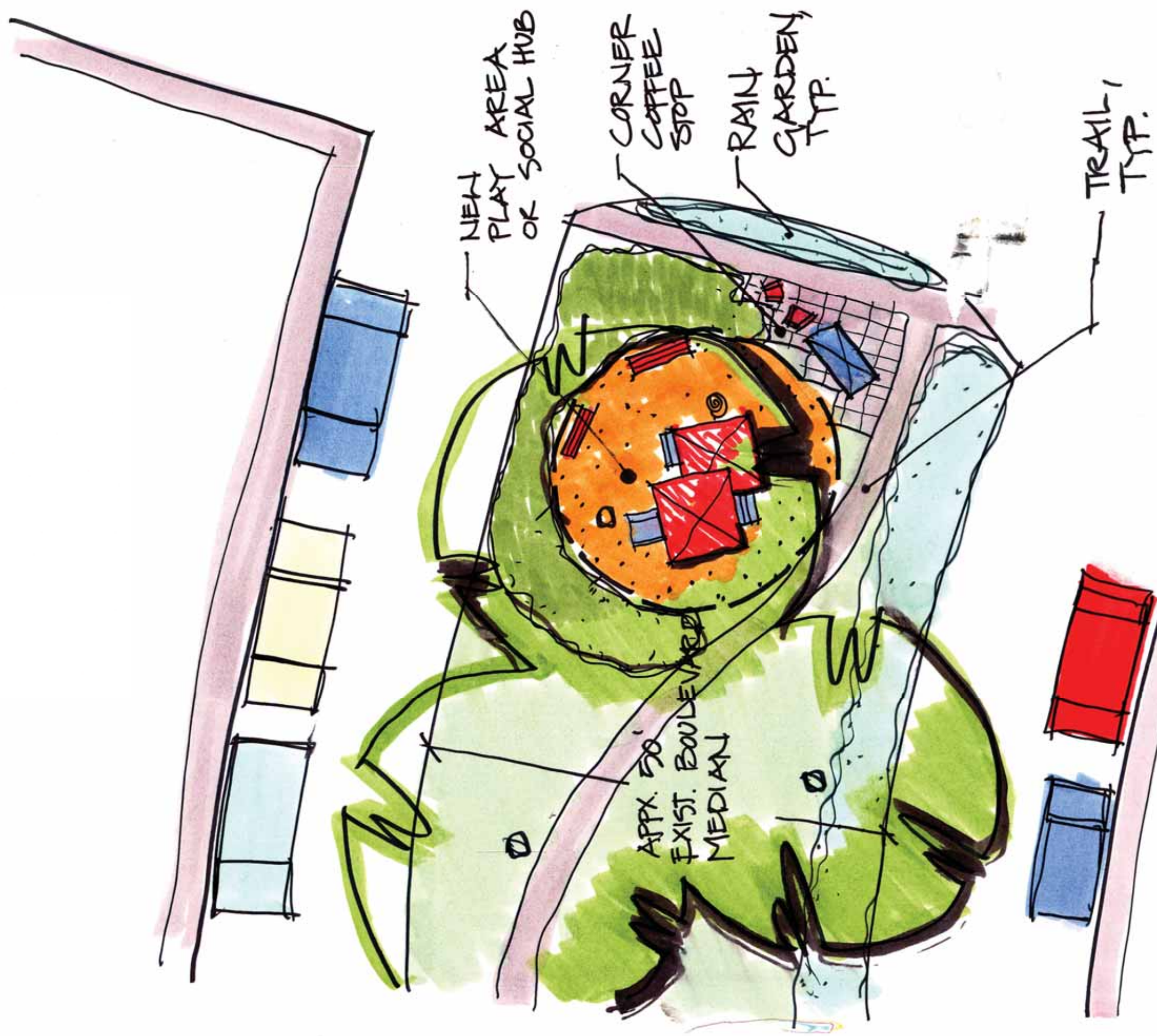


DOG PARK

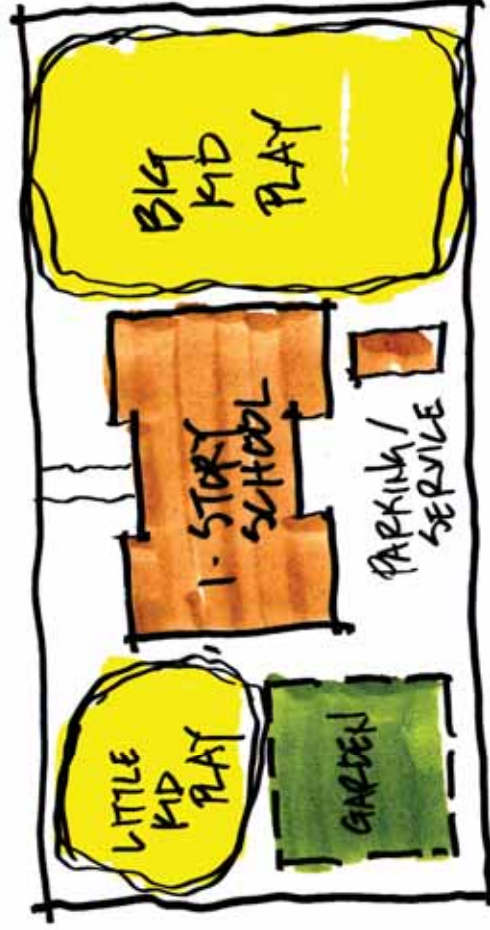


SOCIAL HUB
-BBQ
-COVERED PICNIC
SHELTER

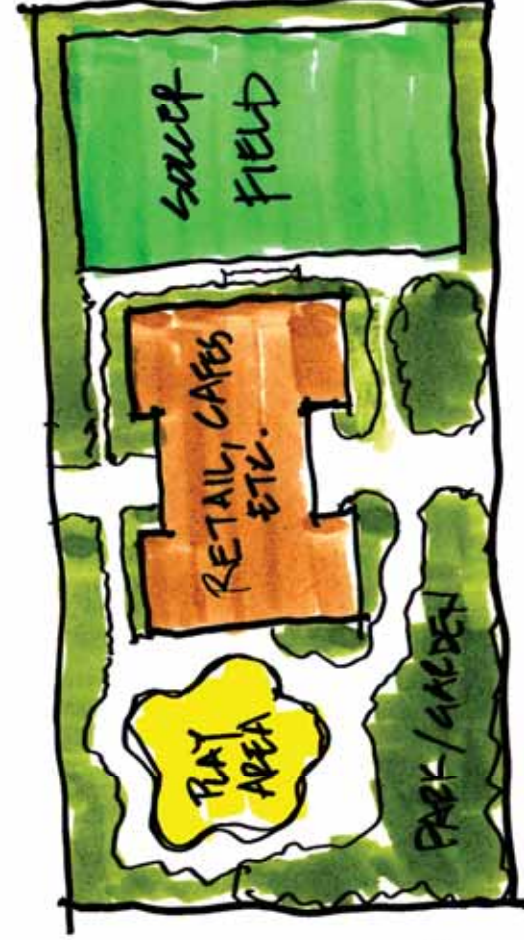
Rainier Valley Team "B"
Children's Play Area / Multimodal Boulevard



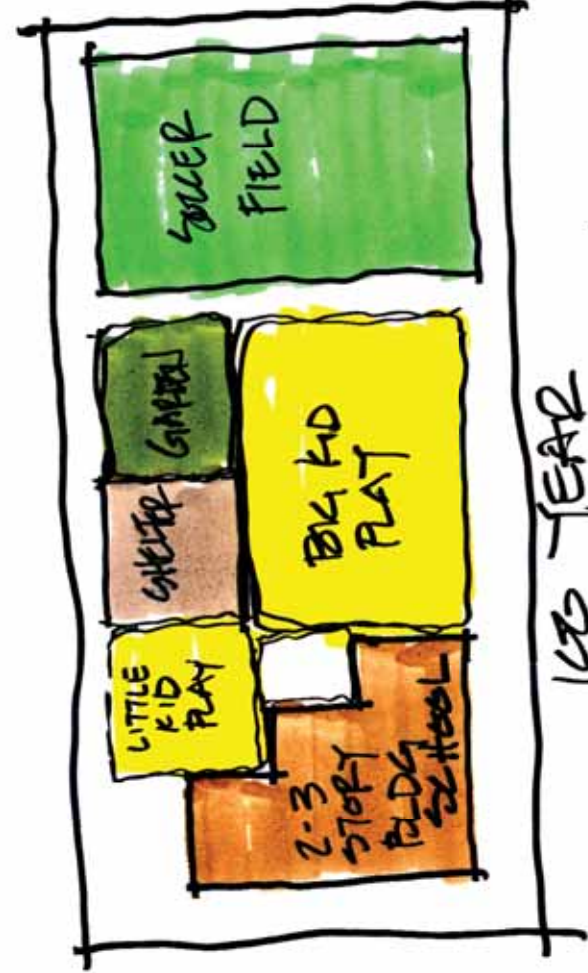
ACTIVATE OUR BOULEVARDS
CHILDREN'S PLAY AREA



PRESENT
A SCHOOL TO BE VACATED



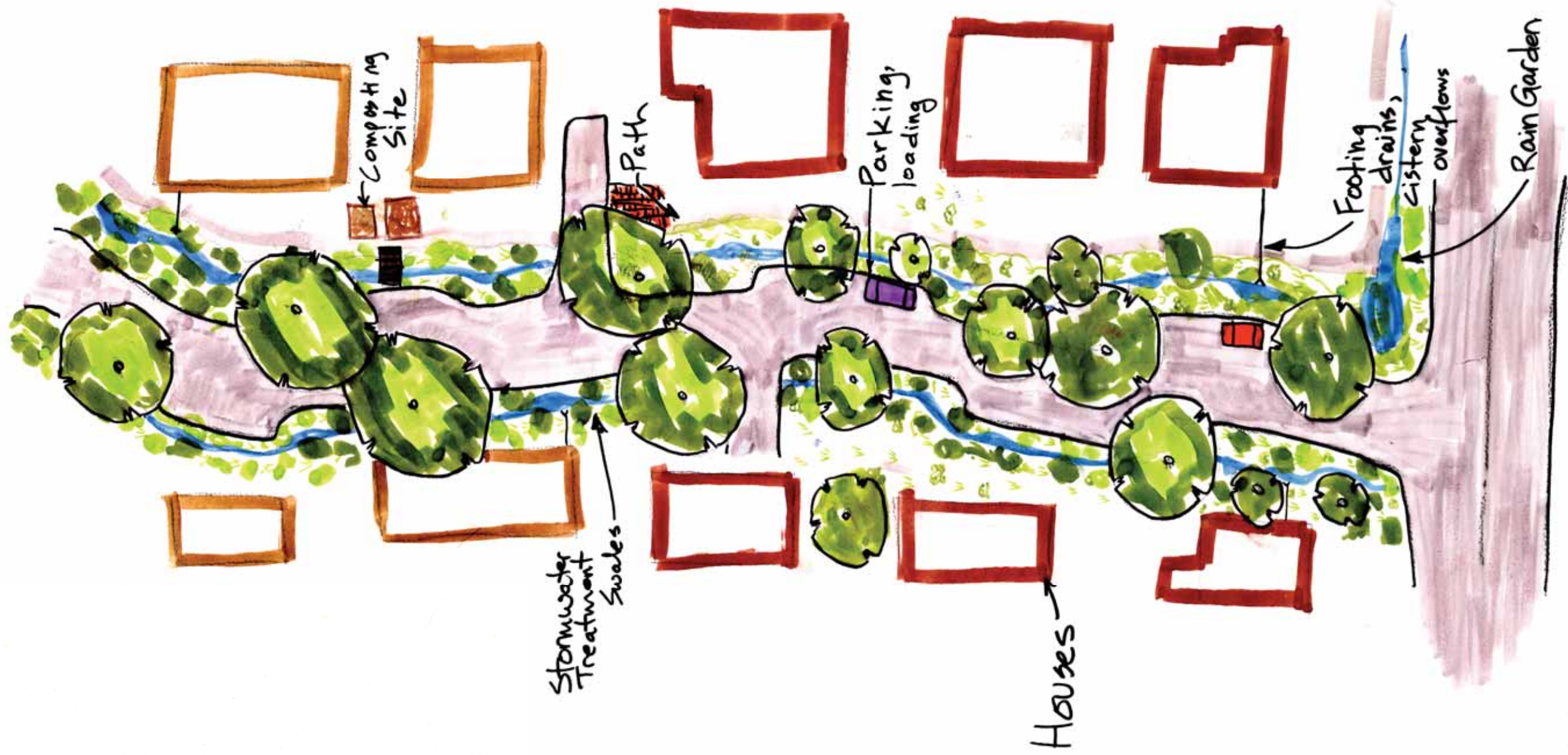
20 YEAR
INTERVENING PUBLIC USES
PRIVATE



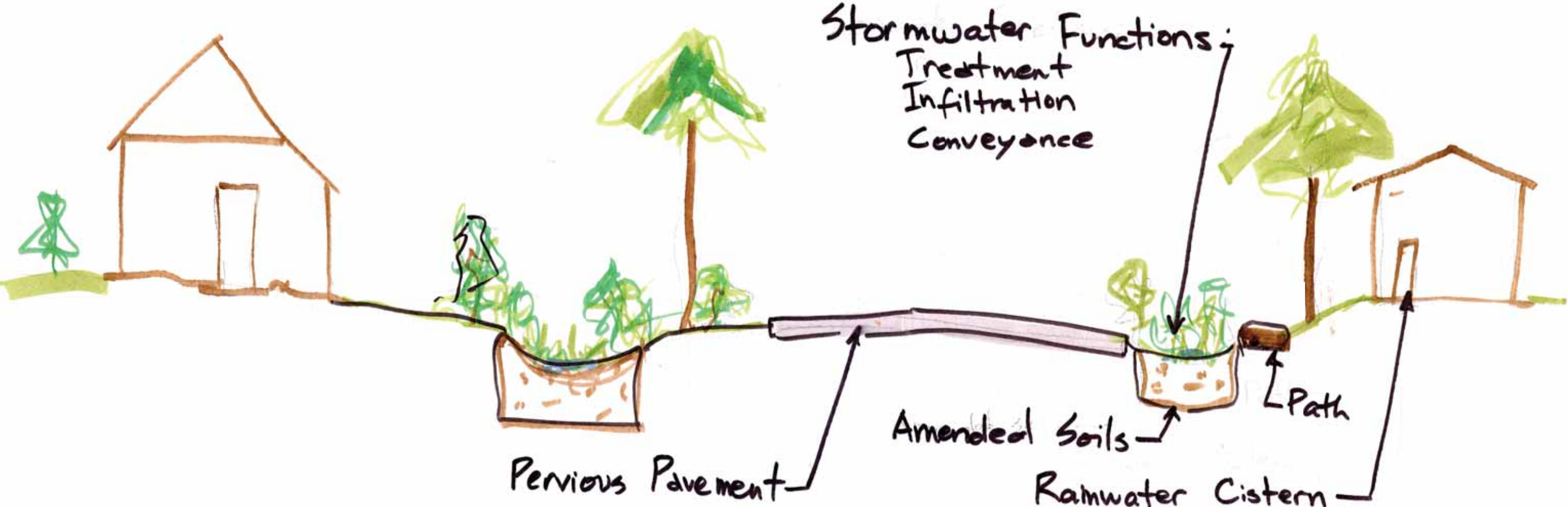
100 YEAR
A SCHOOL AGAIN
RECYCLING A SCHOOL SITE

SEATTLE HAS 2X SCHOOL
CAPACITY NEEDED, NOW
IS SHORT OF REC. SPACE

Rainier Valley Team "B"
Residential Green Streets Prototypes

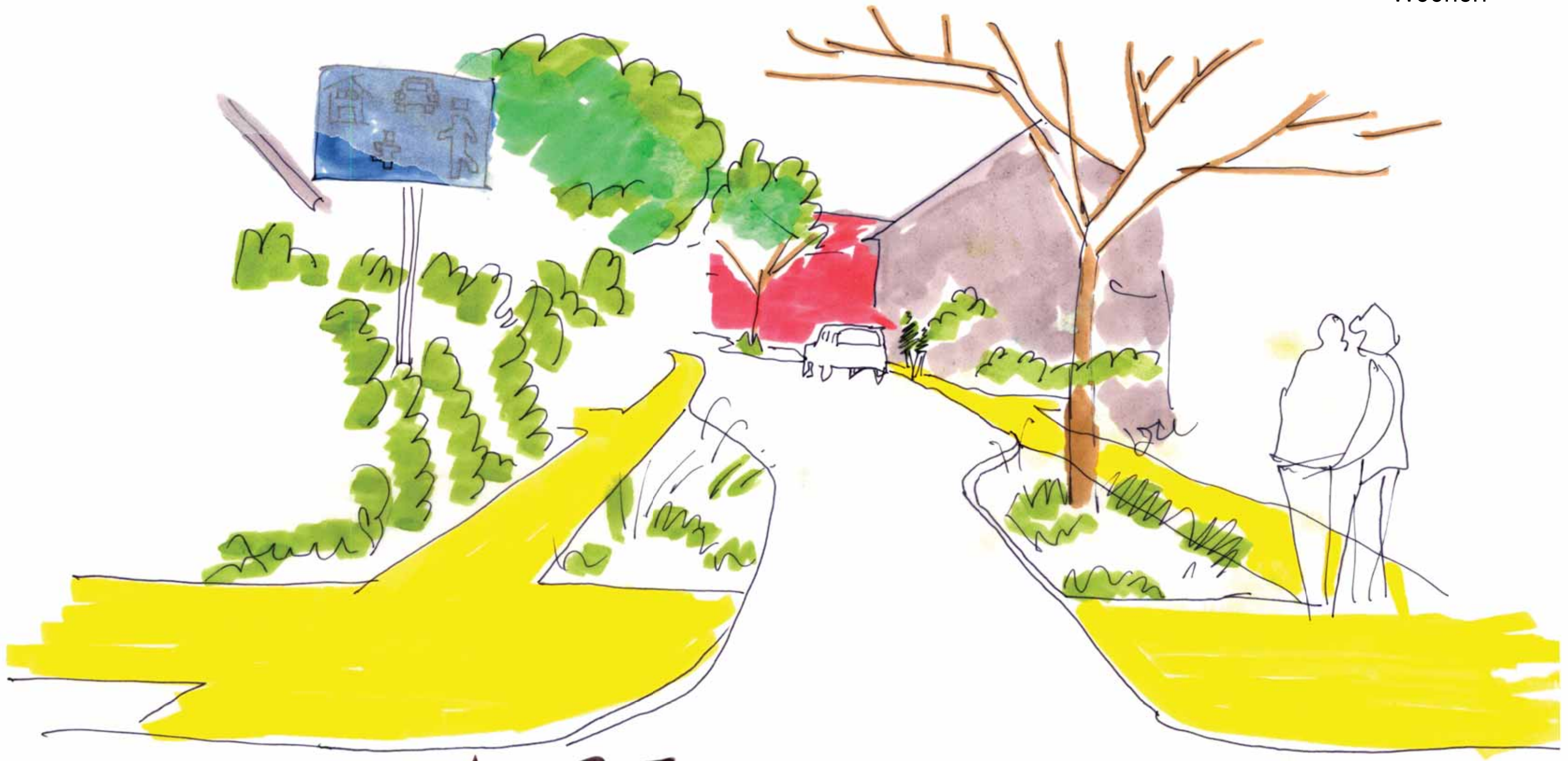


RESIDENTIAL GREEN STREETS



RESIDENTIAL GREEN STREETS

Rainier Valley Team "B"
Woonerf



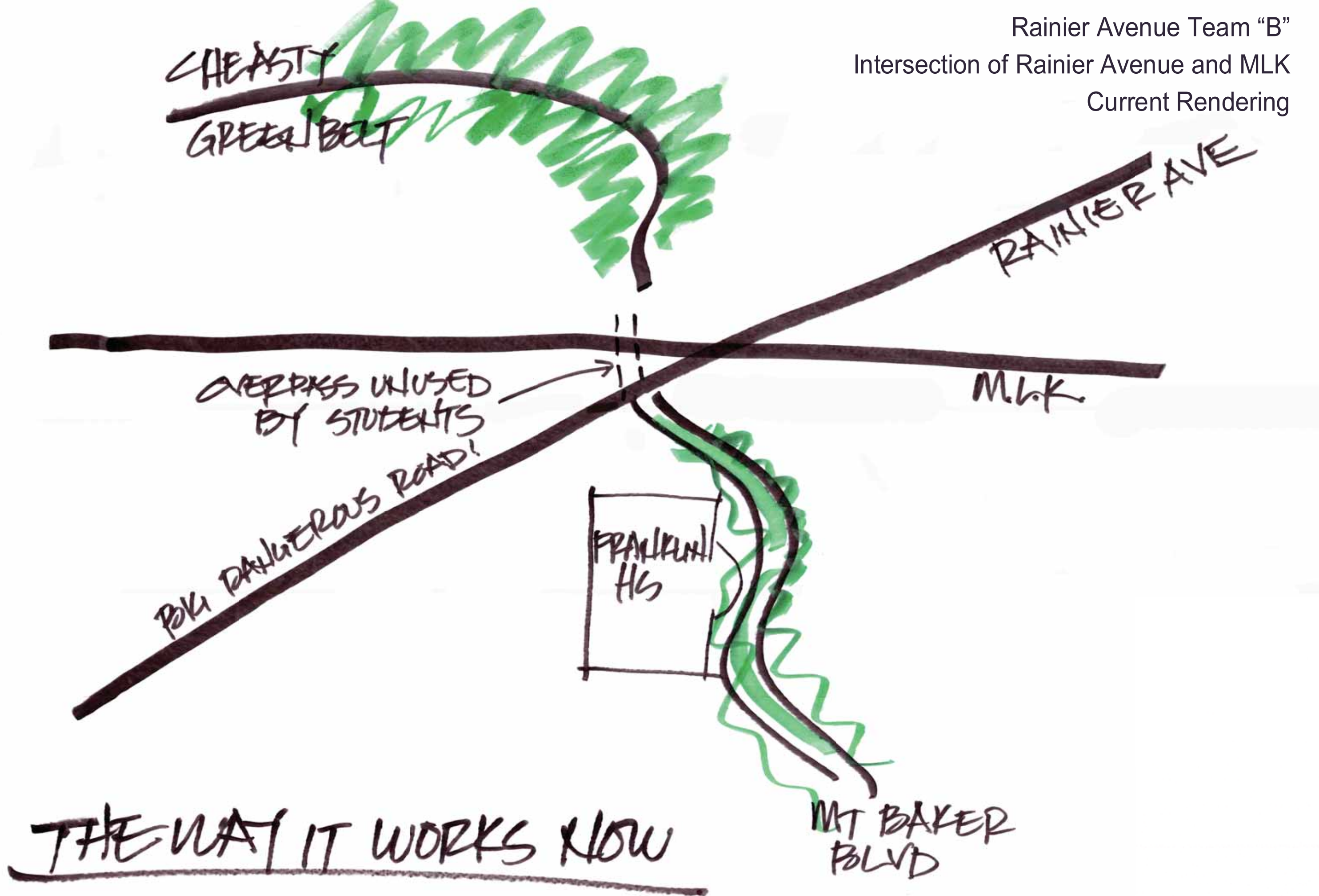
WOONERF



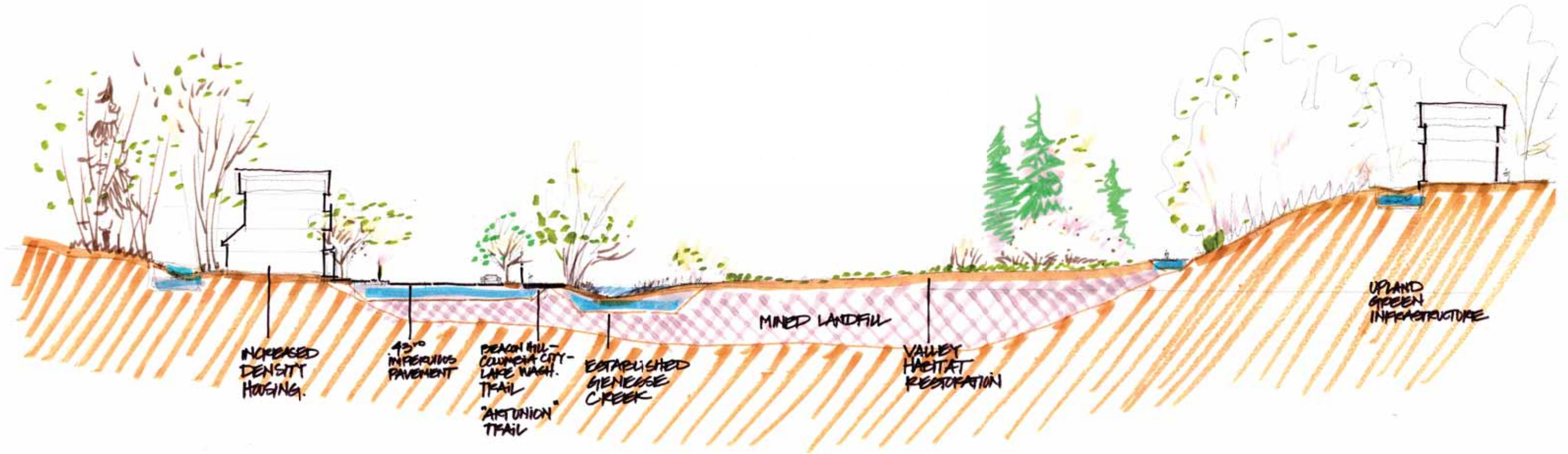
NONMOTORIZED PATHS



HILLSIDE TRAIL CONNECTIONS



Rainier Valley Team "B"
Genessee Park



Rainier Valley Team "B"
Shoreline Enhancements



PROTECT/ENHANCE
UPLAND VEGETATION
UPSTREAM BASIN
GREEN STREETS:
MINIMIZE RUNOFF
STORAGE & INFILTRATION

GREEN "WAYS" INFRASTRUCTURE
ENHANCING OLIMSTED RIBBON

EXTENDING SHORELINE HABITAT
ALONG LAKE WASHINGTON