

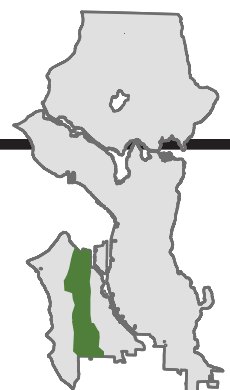


LONGFELLOW CREEK:

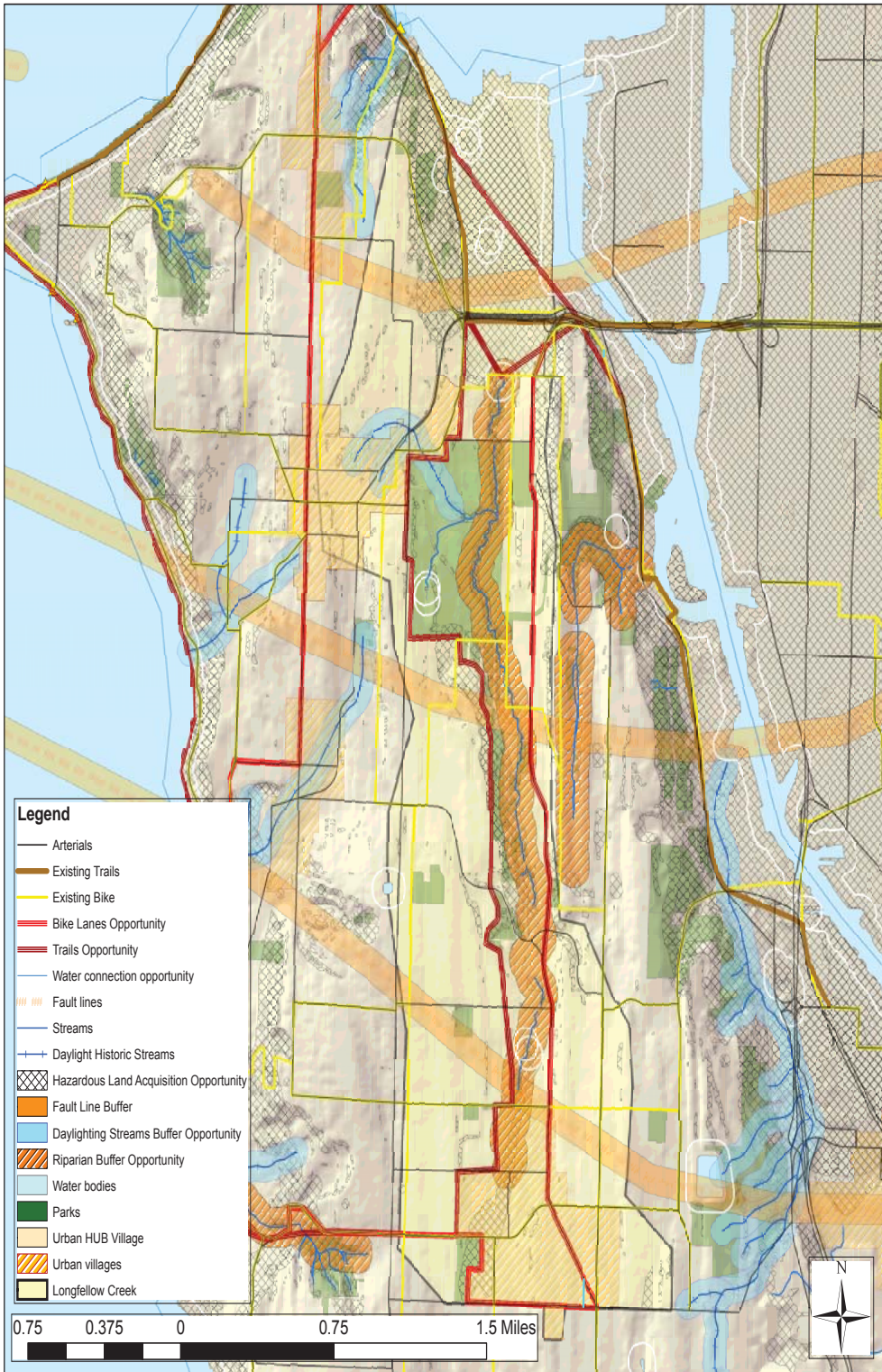
Team Leaders: Maureen Colaizzi, Don Benson

Student Team Members: Noelle Higgins, Sara Robertson

Team Members: Liz Browning, Sherell Ehlers, Jeff Bash, Matt Filipiak, Eileen Alduenda, Kate Stannard, Alison Maitland Scheetz.



Longfellow Creek Opportunities Map



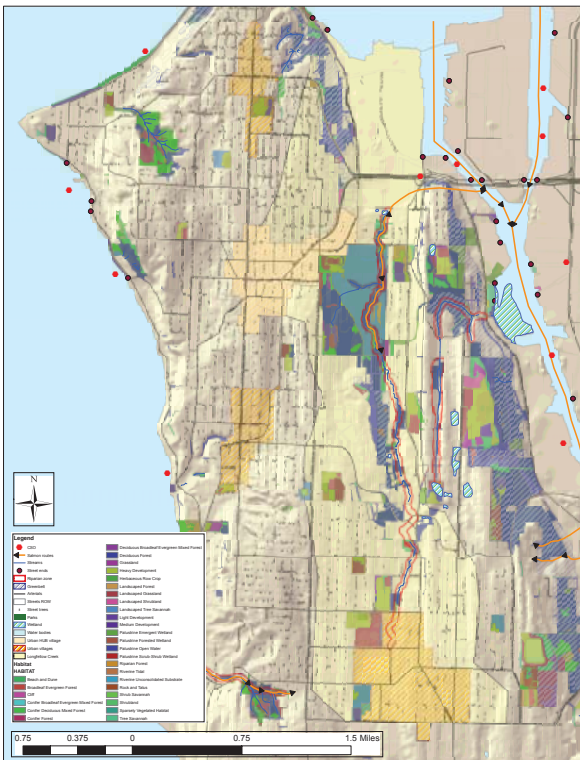
Longfellow



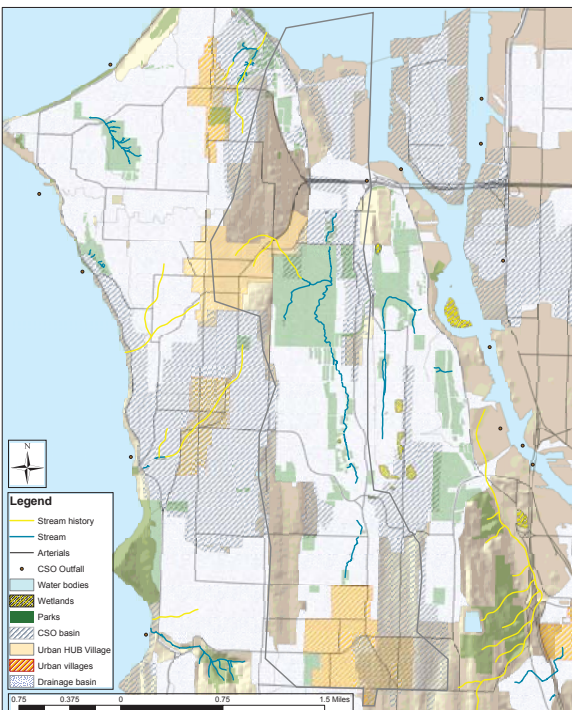
Longfellow Creek Urban Connections Map



Longfellow Creek Habitat Map



Longfellow Creek Water Map



Neighborhood

Longfellow creek is a mixed income, diverse neighborhood in SW Seattle. It is almost landlocked, sandwiched between West Seattle, (a higher income neighborhood which is bounded by waterfront), Duwamish (a primarily industrial area with some single family homes) and White Center (not currently annexed to Seattle, it is a significantly diverse neighborhood in income and population and has a lively shopping district which is utilized by the Longfellow Creek population). This area is culturally diverse neighborhood, still pretty affordable, with several mixed income/low income housing developments.

The Longfellow creek watershed is long and narrow region, between two ridges. Longfellow Creek is a salmonid stream in its lower reaches, it extends throughout the study area, with headwaters in the Roxhill bog and Park. It presents opportunities for habitat restoration, heritage discovery and corridor and community connections.

Assets

Natural Assets Highlight

Long Fellow Creek & riparian zone
Roxhill Bog and Park.

Parks

Creek work, new mixed housing use)
valley/ridge structure

Some projects underway, investment in open space infrastructure (High Point, Longfellow Pea Patches/Market Garden Stormwater retention pond park, pocket parks, drainage swales

Cultural Highlights

Diversity
Affordability
Youngstown Cultural Center
Library
Community Center
Community Participation & Stewardship
High Point Project SHA Project new housing for residents restructuring of streets, mixed with private development, Amp hitheater, other amenities

OPPORTUNITIES

Lack of economic development
Maintain the economic and cultural personality
Daylighting of the creek along its entire length
Reconnect the creek to the community
Implement sustainable design strategies
Identify pedestrian/bikeway connections
East/west connections
Educational and outreach opportunities
Signage
Identify important heritage and historic landmarks
Introduce the area to visitors and residents

CHARETTE GROUP CONCEPTS

Key design strategies
Connections between open space and potential residential density livability, and sustainability of systems.

Regional responsiveness how does this area fit into the whole city? Connections are key.

Longfellow

vision2026



water works
industrial base

luna park
amenities allude to historic amusement park

longfellow gateway
dragonfly portal
historic entrance

west seattle junction
cultural resource
business district connection

youngstown
artist enclave

camp long
longfellow central park

delridge
diverse mixed use community
open air entertainment

high point
diverse resources
community nexus

sylvan orchard
enhanced urban forest
east-west connection steward

sealth
recreational haven
youth gardening

highland
residential retreat

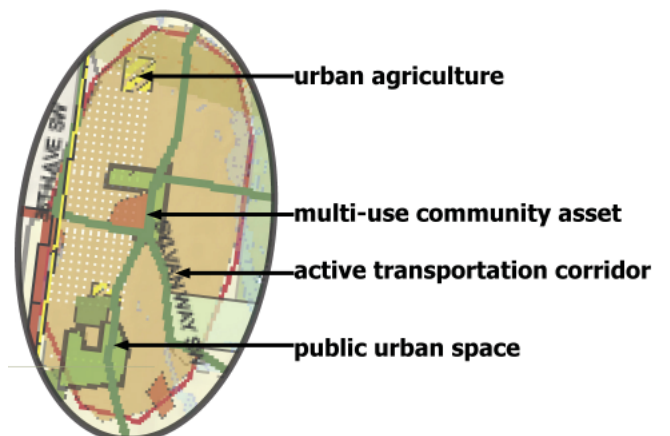
roxhill
historic bog
rich overlay
cultural nexus



Longfellow

post-charrette -GIS analysis of charrette 20 year plan

identified cultural node



post charrette

Open Space Brainstorming (for Seattle) Issues for the 21st Century

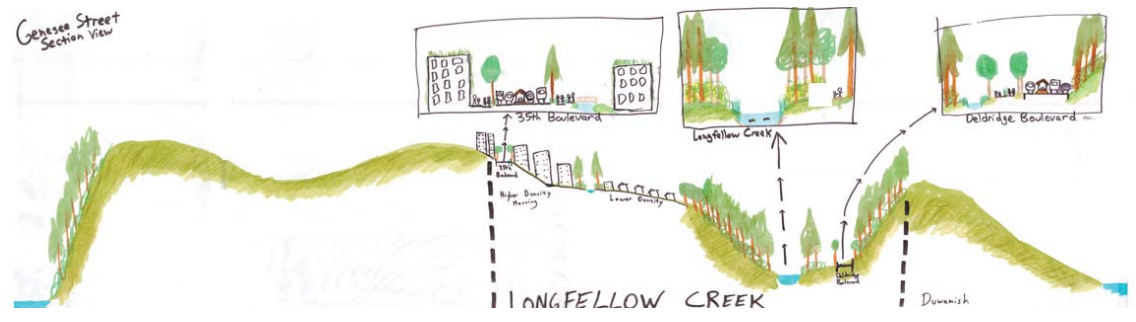
- Think of sidewalks, alleys, boulevards, bus stops, planting strips as green infrastructure. Not just parks.
- Potential to create open space out of existing schoolyards.
- Schools are along creeks another advantage.
- Streets and sidewalks for people use and not just cars.
- Close down streets from cars pedestrian malls.
- Woonerfs or other traffic calming devices/techniques
- Integrating cars and people (safely on the street)
- Hold onto monorail land for green space
- Daylighting creeks
- Creation of artificial creeks
- No wasted water
- Water quality improvements/swales, etc around the city.
- Less impervious surfaces
- Narrowing streets more filtration areas improving city street codes for water quality purposes
- Creating designated bike lanes
- Better transportation corridors
- Bonds for open space
- Fund green space maintenance in Seattle
- Political charettes SPU and Parks
- Leaders need to be interdisciplinary
- Politicians need to show leadership on this.
- Encouraging people to visit other neighborhoods.
- Where should transit systems be located to help people get around the city?
- Re-using existing facilities / historic preservation
- Local food production reducing cost of transport
- Development of centers with commercial districts
- Ensure city properly funds maintenance of open space
- Encourage neighborhood ownership of open space and volunteer efforts
- Provide better training for parks employees for maintaining open space (possibly LEED certification)
- Help to foster institutional change amongst Seattles natural resource management agencies. Reduce turf wars between Seattles public agencies encourage integration overcoming political conflicts. Encourage public/private partnerships to assist with maintenance of open space
- Encourage better connections between neighborhoods in Seattle
- Education of the public on open space issues
- Create policies that require open space mitigation based on footprint of development (example: Chief Sealth Trail)
- Focus on quality of urban habitat

Longfellow

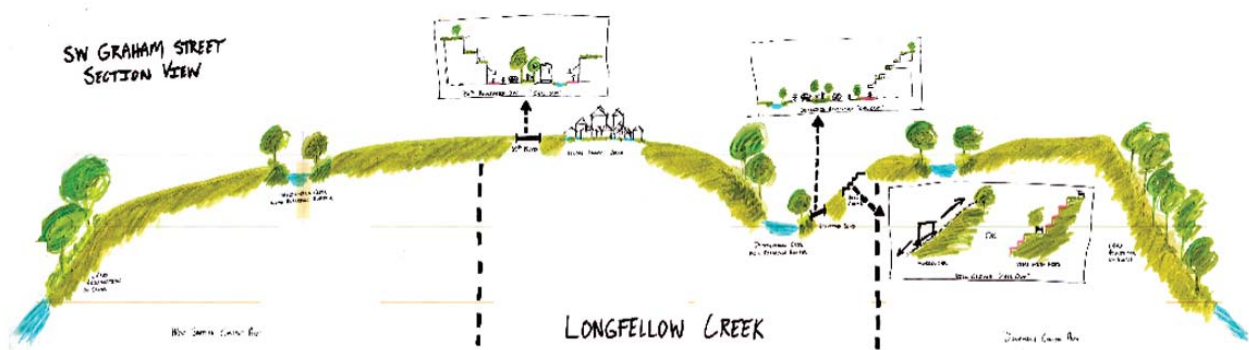


Section- Green/Water Boulevard

Plan - Longfellow Creek Connections



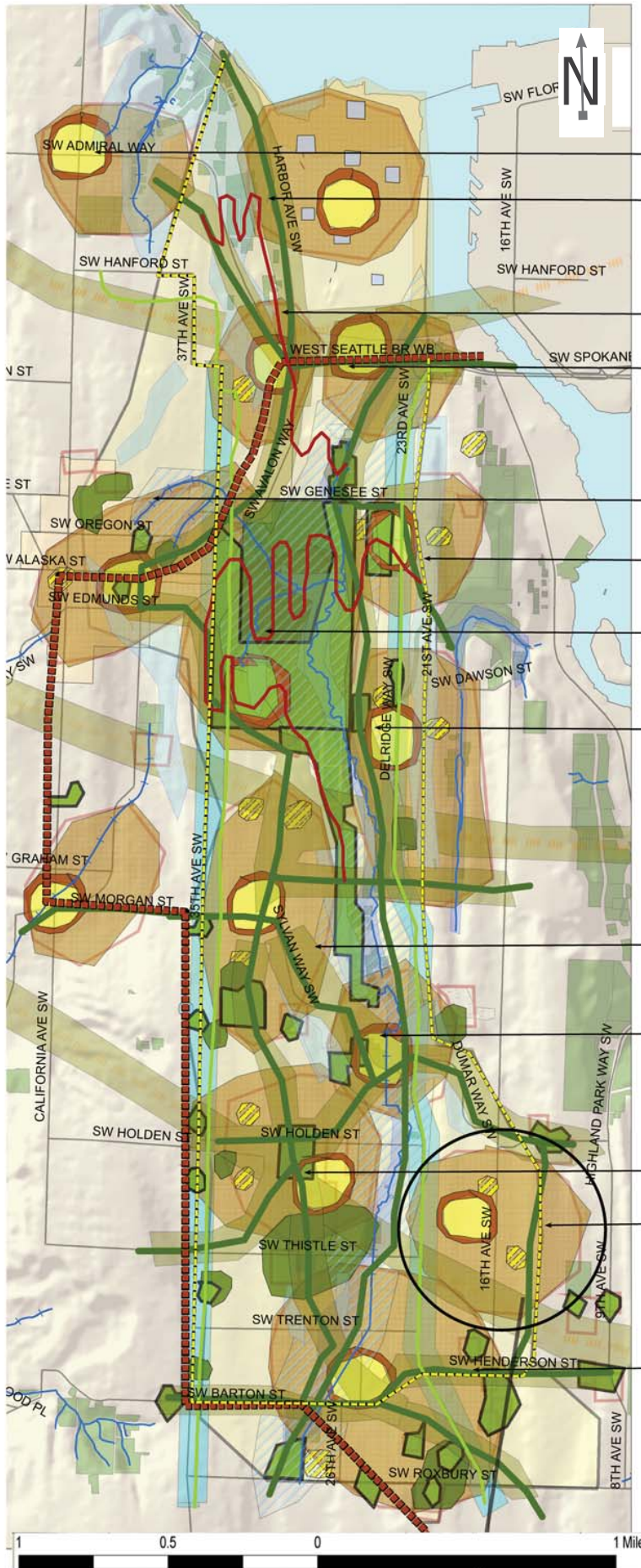
Section-SW Graham Street



Section-SW Genesee Street

charrette

vision2106



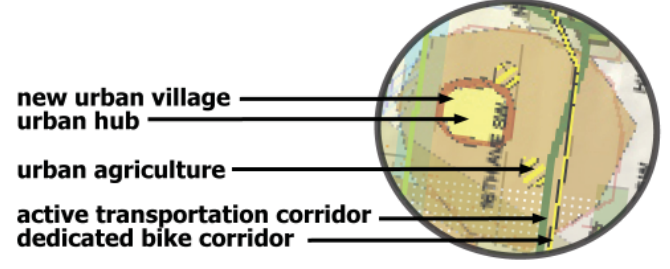
- legend**
- transportation**
- mass transit
 - dedicated bicycle corridor
 - pedestrian corridor
 - trails
- habitat**
- geological mitigation zone
 - stream riparian areas/habitat corridors
 - steep slopes
- community**
- active parks
 - cemetery
 - civic spaces
 - golf course
 - passive parks
 - urban agriculture
- urban**
- community node
 - industrial area
 - urban hub
 - new residential urban village
- water drainage**
- daylighted stream
 - green roof
 - wetland
 - rain garden
 - created shoreline
 - daylighted historic stream

- admiral
- water works
- luna park
- longfellow gateway
- west seattle junction
- youngstown
- camp long
- delridge
- high point
- sylvan orchard
- sealth
- highland
- roxhill

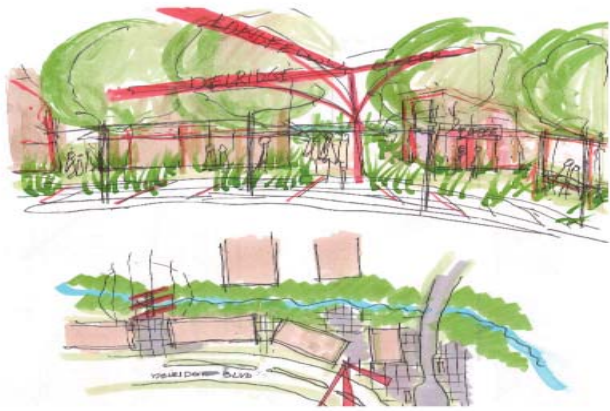


post-charrette -GIS analysis of charrette 100 year plan

developed cultural node



post charrette



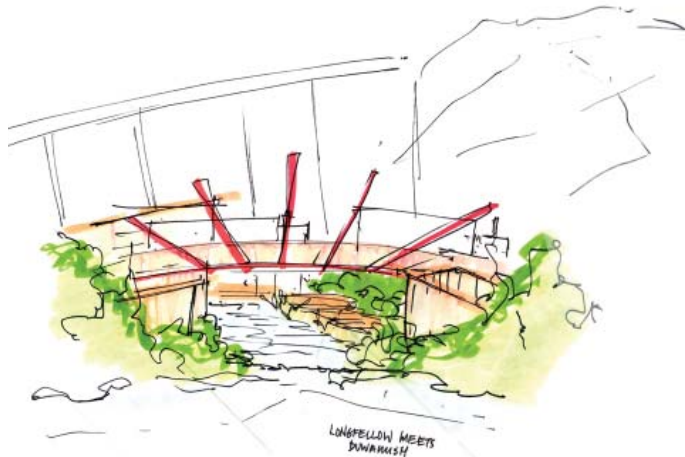
Longfellow Creek Gateway on Delridge



Plan - High Density Node Concept



Public Open Space-Leading to Creek



Longfellow Creek Meets the Duwamish

Regional Goals (Delridge, West Seattle, Duwamish, White Center)

- Green Infrastructure is the guiding principle for transportation connections between these areas
- Use Longfellow Creek as the basis for other riparian corridor development in Seattle
- Provide connections between watersheds regional and sub-regional
- Use dead space created in transportation corridors for open space
- Provide trail connections with recreational opportunities
- Connect the Duwamish and Green River
- White Center should serve as a diverse regional hub
- Develop indicators for what we would consider a thriving or healthy community.
- Encourage multi-modal connections, by enhancing bus corridors, connections, connecting to light rail, connecting to ferry systems, airports, etc.
- Build vertical connections between lowlands and uplands, stairways, funiculars.
- Longfellow Creek, in relation to the city as a whole

Opportunities for the Longfellow Creek Corridor

- Increasing width of riparian zone of Longfellow Creek
- Daylighting entire creek
- Identifying potential landslide areas
- Acquisition of hazardous areas, fault line buffers, steep slopes, slide prone areas, landfill areas
- Maintenance of greenbelt removal of invasive species, restoration of erosion spots
- Linear pea patch
- Creating community and cultural nodes
- Using Longfellow Creek as a spine for connection to other areas, nodes. For example, connections to the Duwamish Greenbelt.
- Connection to Puget Creek (towards West Seattle)
- Natural/Cultural/Economic Corridors
- Tie in Economic Development and Housing Drivers
- Convert 35th Ave SW and Delridge Way in boulevards (with green infrastructure) with multi-modal transportation choices.
- Acquire Cleveland HS for mixed-use or open space.
- Increase level of basic services in area (more grocery stores, hospital)
- Provide open space that has good public access
- Embrace history of region in new development
- Opportunities for other Seattleites to visit Longfellow creek
- Create a village in Delridge with commercial services provide economic opportunities for local residents
- Improved bus service increase transportation choices
- Develop regional plan for pulling visitors to experience the joys of Longfellow Creek.
- Combine open space planning with urban planning connecting open space with economic centers.
- Restore and promote healthy salmon run in Longfellow Creek by daylighting creek, creating better habitat, removing barriers to passage

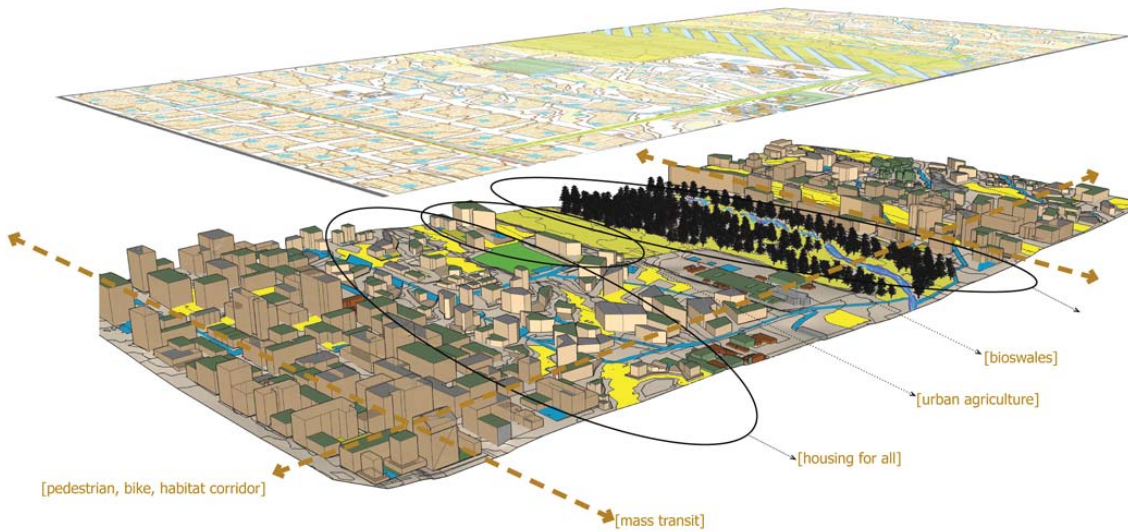
Longfellow

EVOLVING A COMMUNITY NODE



urban agriculture

axonometric view



developed community node

Longfellow



New OpenSpace Types

- Urban Agriculture
- Urban Forest
- Bioswales streets
- Community Commons
- Human Corridors
- Habitat corridors

100 year evolved neighborhood node

- Alternative transportation
- Emphasis on community open space
- Housing for everyone
- Follow topography not grid
- Take advantage of critical areas for open space

forest



bioswales



agriculture



open space succession in developed node
post charrette-student design

DESIGN CONCEPT

Nurture community within a community

- Completely daylight creek
- incorporate mass transit
- Create a densified, mixed-use corridor along 35th Ave SW
- Close SW Kenyon Ave except to pedestrian/bike/habitat
- Implement sustainable design strategies-
Street Edge Alternatives
- Low Impact Development
- Expand the stream riparian zone
- Create connections
- Integrate cultural place-making and restoration
- Stewardship=Community
- Expand urban agriculture
- Maintain affordable neighborhood
- Identify cultural and economic nodes
- Encourage economic sustainability
- Encourage food security
- Encourage self sufficiency

Focus areas

- Food
- Water
- Transportation
- Economic opportunities
- Cultural diversity

Implement plan incrementally

- Creek improved with urban forest established
- Mass transit generates growth
- Encourages use of public transit
- Less car-centric
- Encourages dense, mixed use development
- Sustainable streetscapes
- Incorporated affordable housing
- All new development is LID
- Smaller block sizes- more walkable neighborhood
- Improve water quality returned to stream
- Restore native amphibious species to stream
- Diverse culture & income maintained
- Community stewardship + municipal support = evolved neighborhood.
- Extensive urban agriculture



mixed housing types



urban forest



bioswales

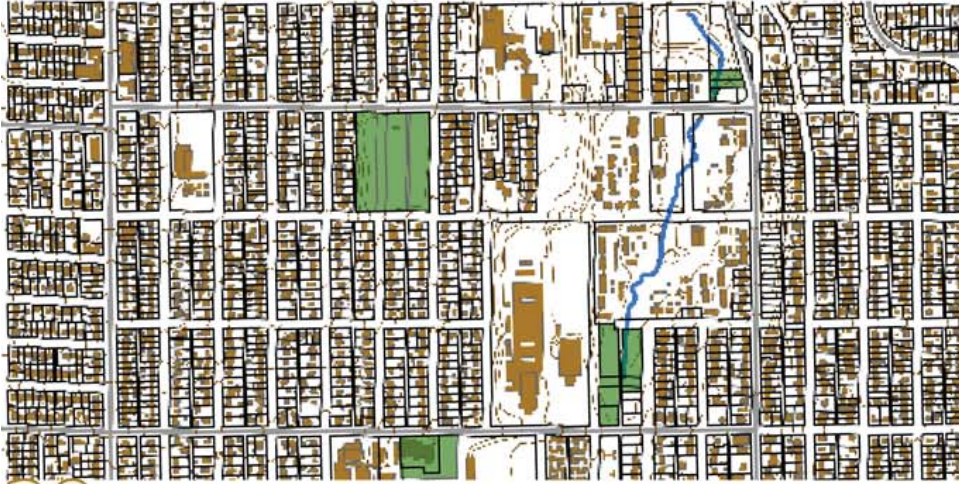


mass public transit

post charrette-student design

EVOLVING A COMMUNITY NODE

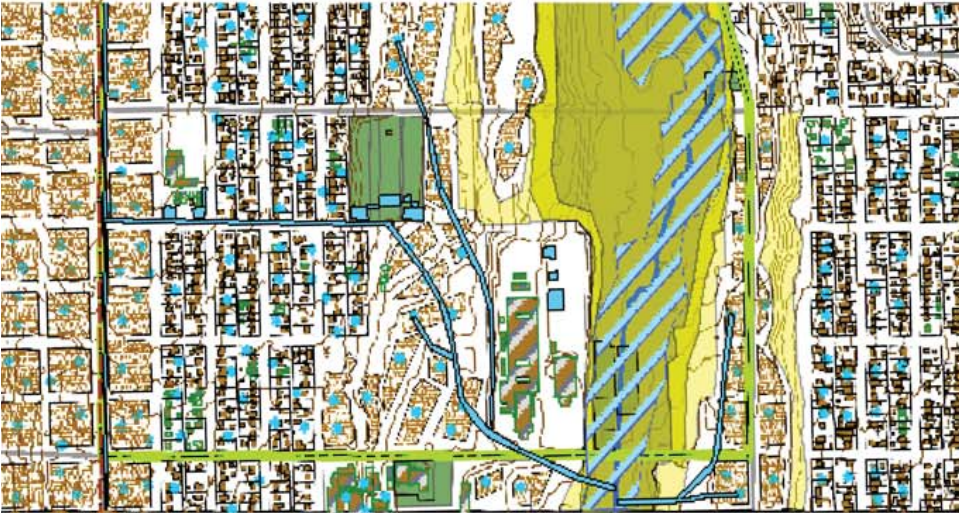
now



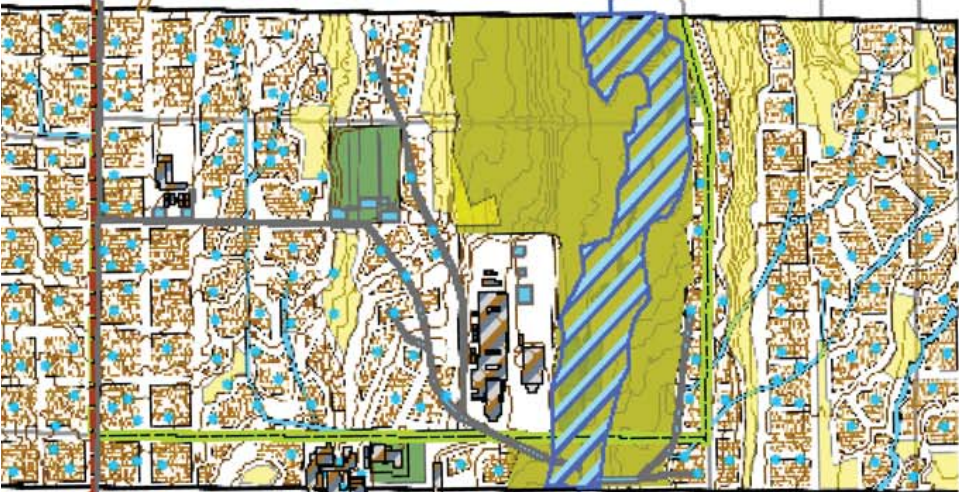
20 years



50 years



100 years



Longfellow

post charrette-student design

implementation phases now [2006]



Implementation Strategies:

Funding mechanism to support maintenance of Longfellow Creek

Creation of Longfellow Creek as an official park status

Seek funds from the Neighborhood Matching Grants program for green infrastructure

Utilize transfer development rights to preserve current open space

Utilize Real Estate Excise tax 2 to acquire land for connections and trails
conservation easements to allot land as preserved

Zoning changes to incorporate higher density, more walkable community

Acquire geological hazard mitigation land for preservation and non-buildable land

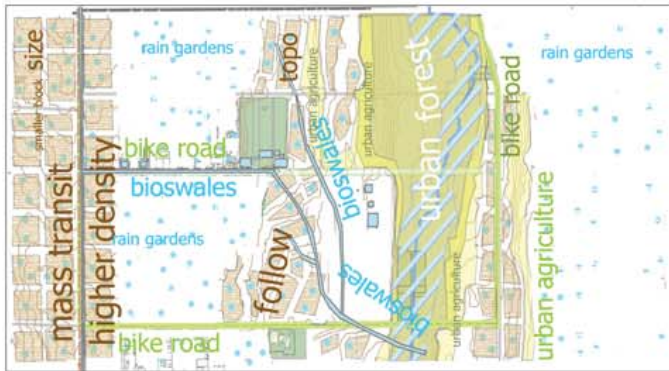
Create public-private partnerships for stewardship requirements

Open space management classes to ensure quality control

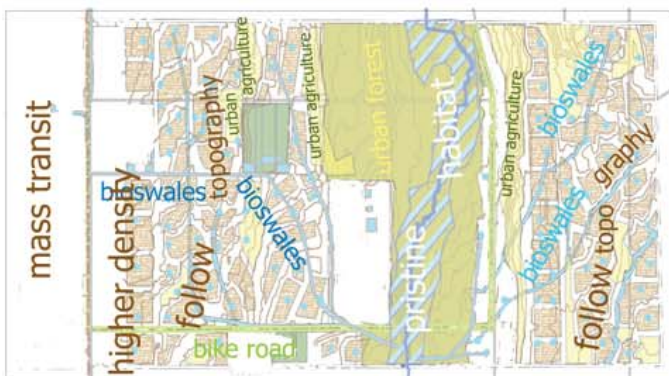
phase 1 [2026]



phase 2 [2076]



phase 3 [2106]



Pedestrian Habitat Corridor

Longfellow