

... stroll through a landscape that changes with environmental conditions and human needs

shifting infrastructure
buildings become environmentally-responsive vertical landscapes for plants, animals and people



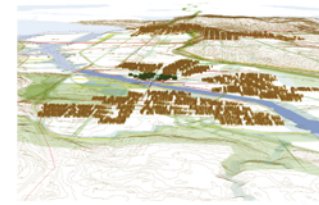
wind energy is harvested locally



buildings provide vertical structure and varied habitat for birds, insects, plants and people

light and water penetrate buildings to provide habitat for wildlife within structures and create opportunities to interact with wildlife

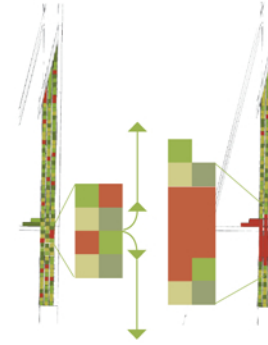
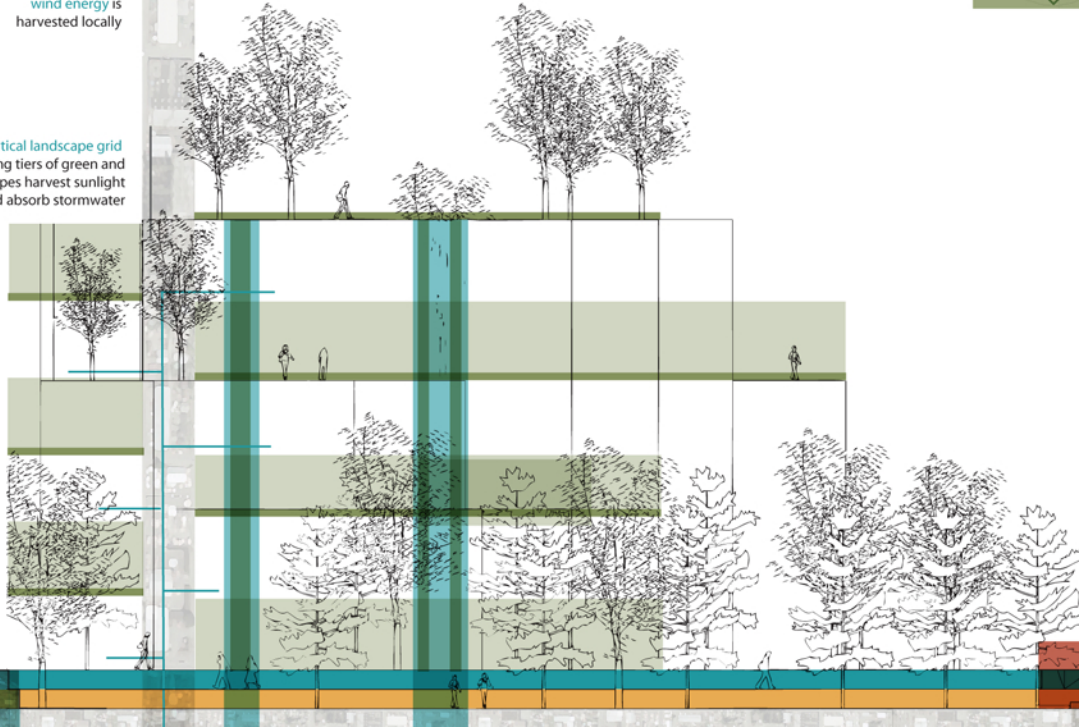
buildings unfold to capture sunlight and contract in the rain to reduce impermeable surfaces



scale: 1" = 300'

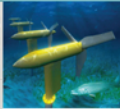


vertical landscape grid
alternating tiers of green and solar landscapes harvest sunlight and absorb stormwater



agricultural park and plaza
nursery, agriculture and native plant beds shift along the 8th avenue corridor to open a large plaza for community gatherings

water seeps through walls along pedestrian paths, to reveal the course of water as it moves through the built landscape



microhydro is used to capture the energy found in tidal movement, wave action and river currents

convertible plazas provide multi-use spaces

- agricultural beds
- nursery beds
- native plant gardens
- educational opportunities
- plazas

recycled infrastructure
buildings and landscapes are constructed on the rubble from earthquake-damaged seattle

habitat bridges and wetlands
an intersection of pedestrian and habitat bridges allow people to walk through the forest canopy while windmills harvest wind energy and wetland nursery beds grow native plants and agricultural crops



SHIFTING LANDSCAPES duwamish river park

TEAM LEADERS: JIM BRENNAN, MARK JOHNSON TEAM MEMBERS: BJ CUMMINGS, DOTTIE FARIS, ERIC HIGBEE, SCOTT HOLSAPPLE, KAREN JANOSKY, SARAH KAVAGE, TOM KNAUBLAUGH, JAMES RASMUSSEN, SAGE K. SASKILL, CARI SIMON

STUDENT PROJECT: KARI STILES

