

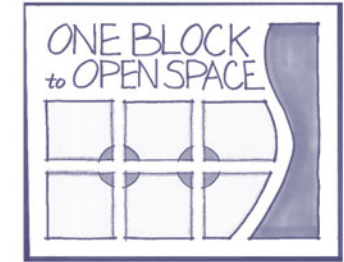
# open space seattle 2100: charette process and product

"overarching vision: one block to open space"

"this strategy ensures that every citizen is personally, as well as equitably, invested in seattle's open space system"

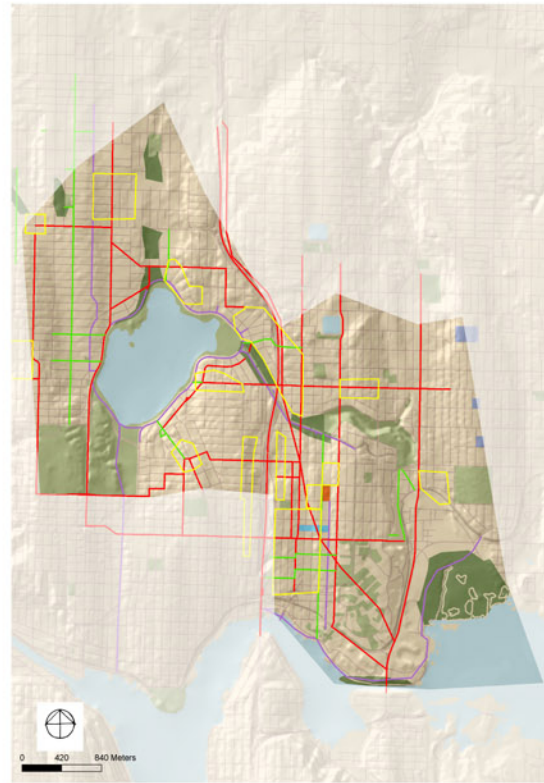
"open spaces have many forms and scales, as well as multiple social, economic, and connective functions with a layered hierarchy that celebrates both our diverse environment and local culture"

--university team b, green futures charette

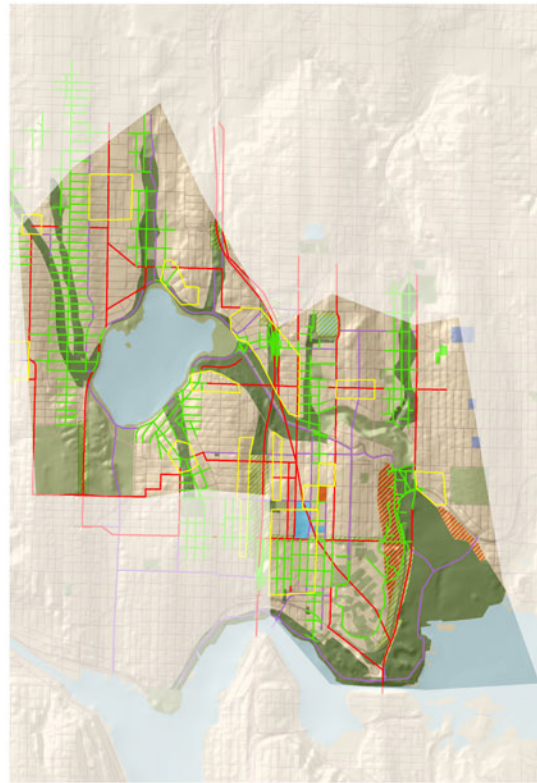


## community and transportation

- Active Park
- Civic Space
- Urban Hub
- Schoolyard
- Passive Park
- Farmers Market
- Green Street
- Pedestrian/Bicyclist Oriented Street
- Lidded Open Space
- Urban Agriculture
- Transit



20 year projection



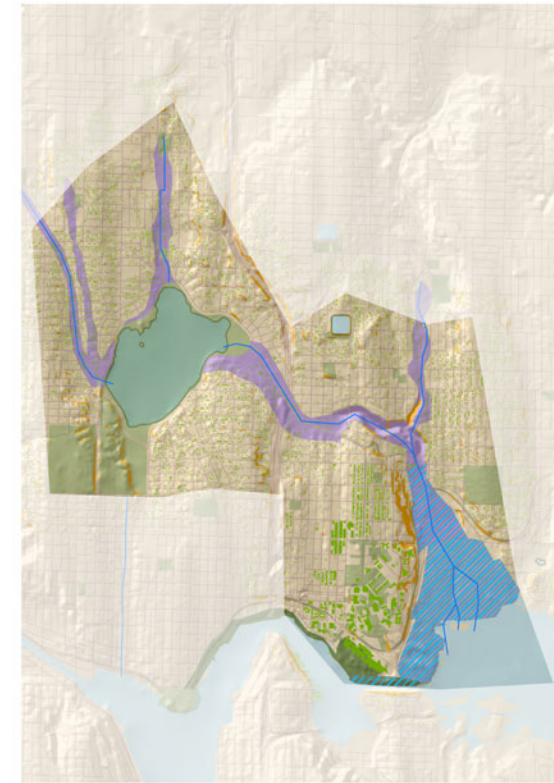
100 year projection

## habitat and natural drainage

- Stream
- Estuary
- Stream Riparian Area
- Wetland
- Green Roof
- Lake Riparian Area
- Steep Slope



20 year projection



100 year projection

