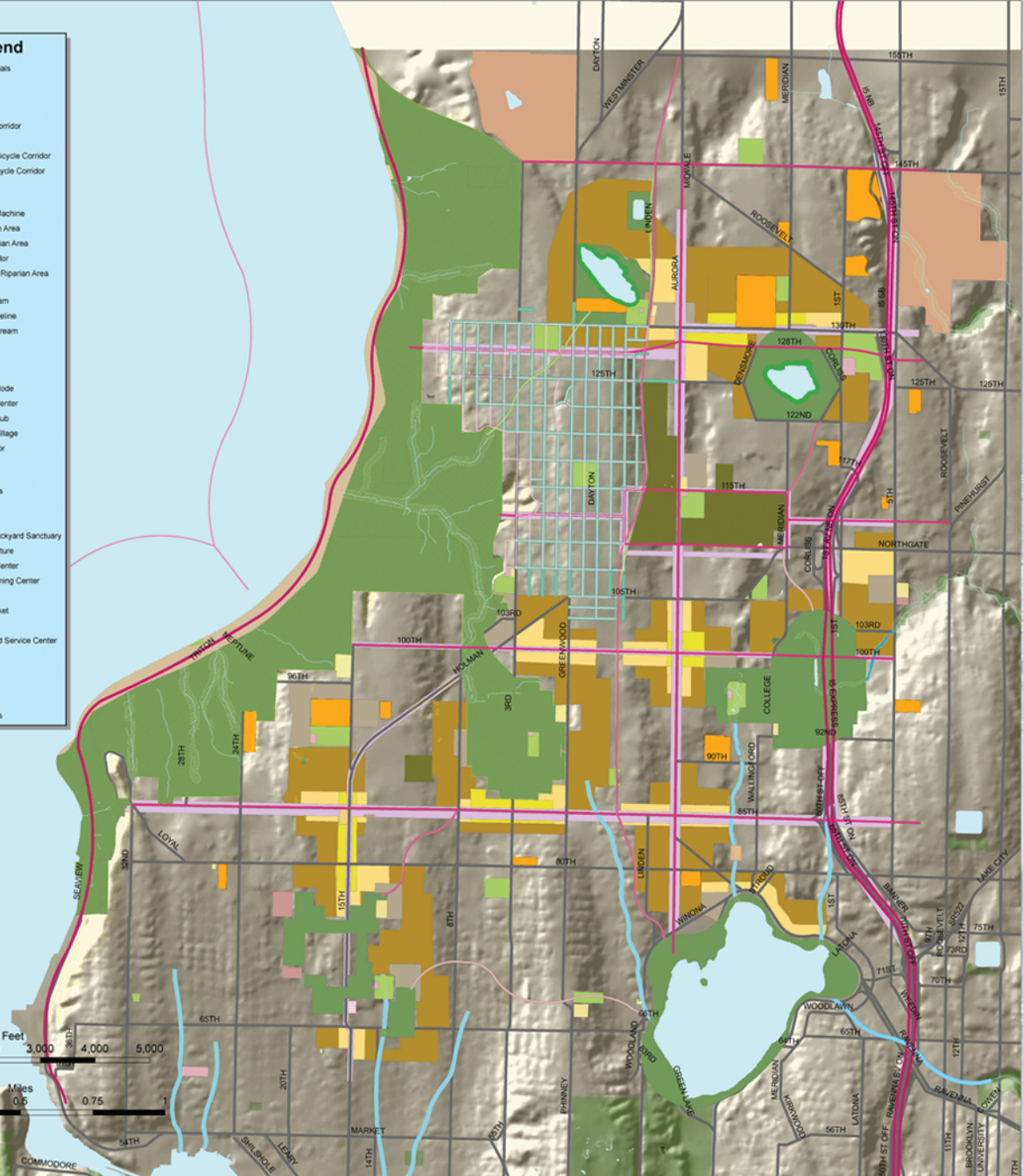
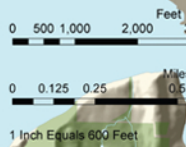


NORTHWEST 100 YEAR MAP

Legend	
	Existing Arterials
	Streams
Transportation	
	Green Street
	Pedestrian Corridor
	Water Taxi
	Designated Bicycle Corridor
	On-Street Bicycle Corridor
	Mass Transit
Habitat	
	CSO Living Machine
	Lake Riparian Area
	Stream Riparian Area
	Habitat Corridor
	Puget Sound Riparian Area
Water	
	Created Stream
	Created Shoreline
	Daylighted Stream
	Rain Garden
	Wetland
Urban	
	Community Node
	New Urban Center
	New Urban Hub
	New Urban Village
	Urban Corridor
Community	
	Trails
	Passive Parks
	Active Parks
	Cemetery
	Combined Backyard Sanctuary
	Urban Agriculture
	Community Center
	Beach Swimming Center
	Civic Space
	Farmers Market
	Golf Course
	Neighborhood Service Center
	Playfield
	Playground
	Pool
	School
	Existing Parks

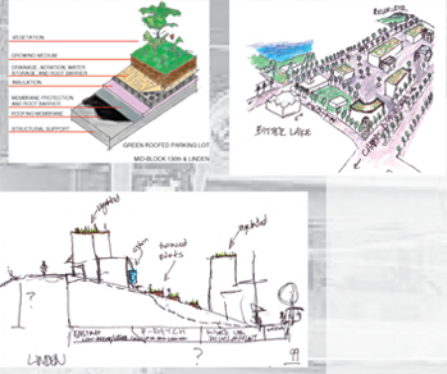


20 YEAR IMPLEMENTATION

CONCEPT:

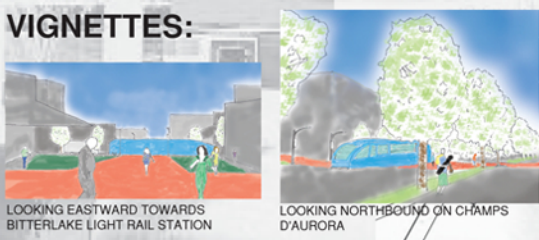
EAST-WEST PEDESTRIAN ACCESS THROUGH A MIDBLOCK STOPPING PLACE, INTENSIFIED DEVELOPMENT WITH A PEDESTRIAN FOCUS. THE CENTRAL HUB OF THIS NEW URBAN VILLAGE BEGINS AT THE BITTERLAKE LIGHT RAIL STATION

CONCEPTUAL DRAWINGS:



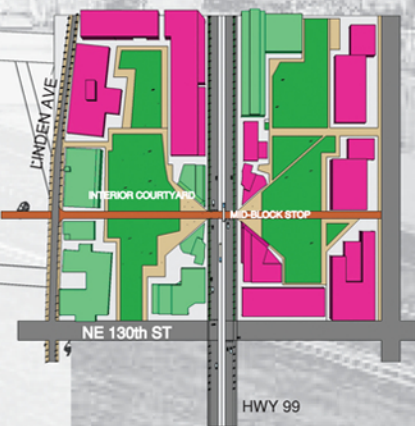
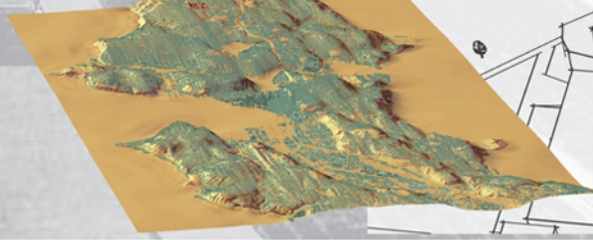
- START LINDEN DEVELOPMENT-INTERURBAN TRAIL
- BUILD UNDERGROUND BETWEEN LINDEN AND HWY 99
- MIXED USE DEVELOPMENTS WITH VEGETATED ROOFS
- CREATE MID-BLOCK STOP FOR PEDESTRIAN SAFETY
- INSTALL AN ALLEE OF TREES ON HWY 99
- LIGHT RAIL SYSTEM TO SERVES AS CATALYST

100 YEAR IMPLEMENTATION



CONTEXT:

NORTH EDGE OF SEATTLE



- CREATE MORE UNDERGROUND PARKING GARAGES
- VEGETATED ROOF TOP COURTYARDS
- BUILD MORE MIXED USE EAST OF HWY 99
- LINDEN CORRIDOR IS MORE ESTABLISHED

