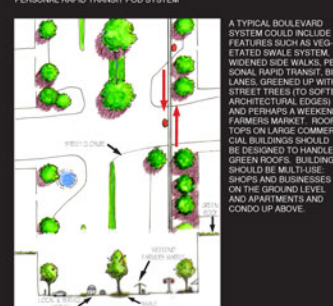
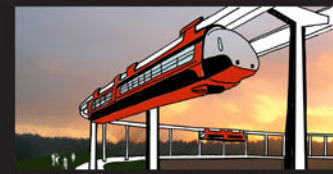
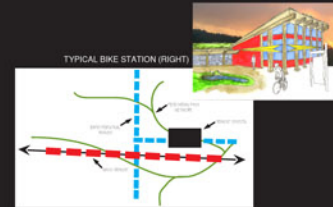


TRANSPORTATION GOALS:

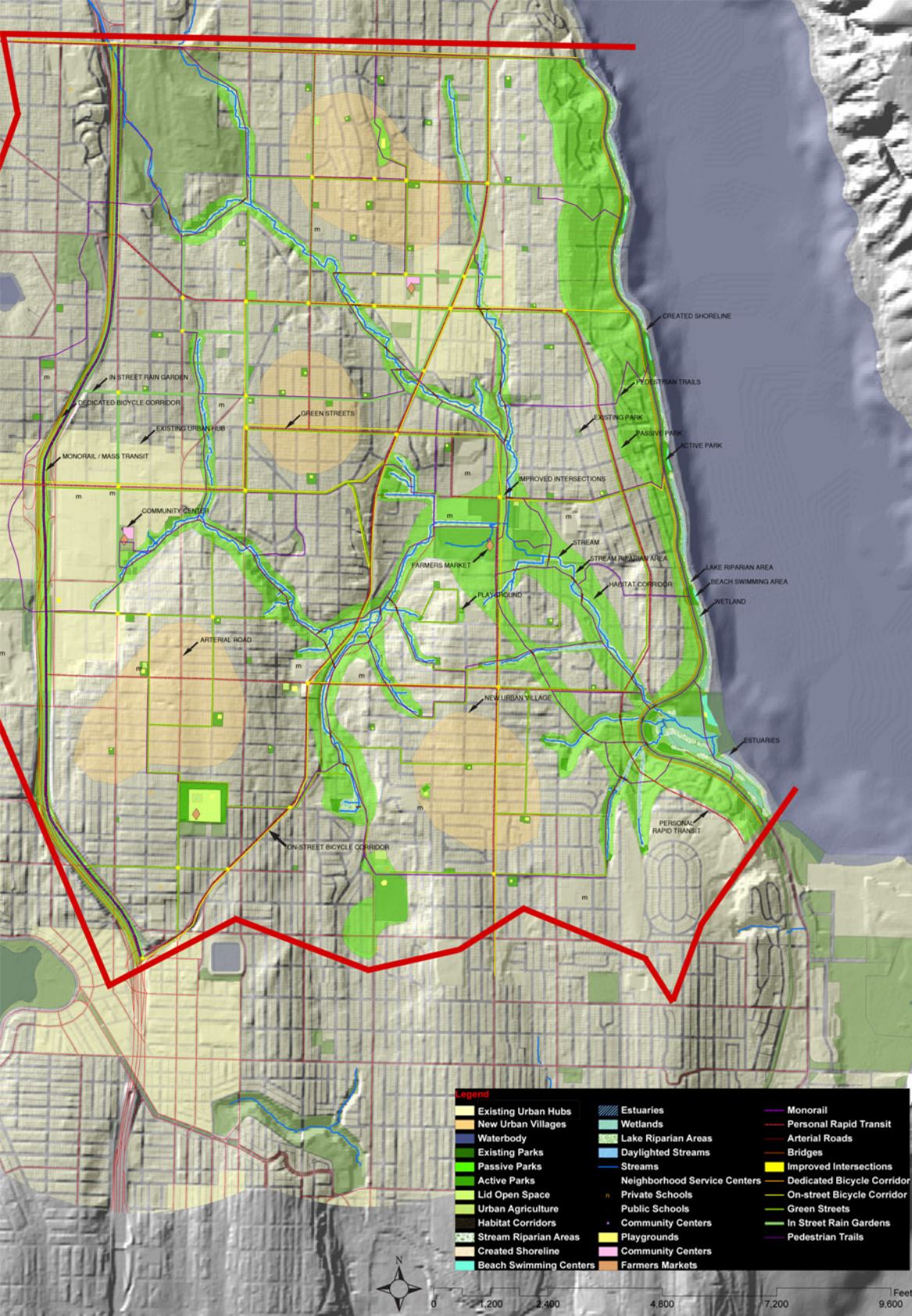
- CREATE A VARIETY OF TRANSPORTATION OPTIONS IN CLOSE PROXIMITY TO ALL URBAN HUBS AND VILLAGES.
- INCLUDE MASS TRANSIT AND PERSONAL TRANSIT OPTIONS
- PROVIDE BIKE STATIONS AT ALL TRANSPORTATION HUBS. THIS INCLUDES BIKE LOCKERS, SHOWER FACILITIES, AND CONCESSION.
- CONSIDERATION OF THE PEDESTRIAN EXPERIENCE 1ST!
- INCORPORATE GREEN INFRASTRUCTURE INTO ALL REMAINING ROADWAYS.



ENHANCING PEDESTRIAN FLOW

GOALS FOR THE THORNTON CREEK PARK SYSTEM:

- CREATE A SERIES OF WALKING LOOPS THAT ARE DESIGNED FOR ECOLOGICAL FUNCTION AND FOR HUMAN SOCIAL INTERACTION.
- CREATE NATURAL EXPERIENCES THAT ARE WITHIN AN 1/8 MILE RADIUS OF ALL HOMES (THIS INCLUDES: PARKS, PLAYGROUNDS, P-PATCHES, FARMER'S MARKETS, WALKING TRAILS, STREAM INTERACTION, AND VISTAS.
- CREATE SOME AREAS THAT ARE WILDLIFE ONLY.
- SEPARATE USER ON THE TRAIL SYSTEM.



Legend

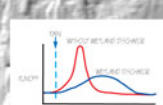
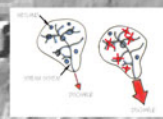
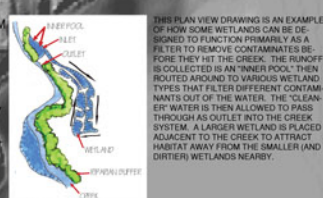
Existing Urban Hubs	Estuaries	Monorail
New Urban Villages	Wetlands	Personal Rapid Transit
Waterbody	Lake Riparian Areas	Arterial Roads
Existing Parks	Daylighted Streams	Bridges
Passive Parks	Streams	Improved Intersections
Active Parks	Neighborhood Service Centers	Dedicated Bicycle Corridor
Lid Open Space	Lid Schools	On-street Bicycle Corridor
Urban Agriculture	Public Schools	Green Streets
Habitat Corridors	Community Centers	In Street Rain Gardens
Stream Riparian Areas	Playgrounds	Pedestrian Trails
Created Shoreline	Community Centers	
Beach Swimming Centers	Farmers Markets	



ENHANCING HYDROLOGICAL FLOW

HYDROLOGY GOALS: DECREASE RUN-OFF INTO STREAMS AND SUCCESSFULLY MANAGE ALL STORM WATER.

- USE WETLANDS TO THEIR HIGHEST POTENTIAL
- CREATE SWALE SYSTEMS IN NEIGHBORHOODS AND ROADWAYS.
- USE PERVIOUS SURFACES AS MUCH AS HUMANLY POSSIBLE.
- DESIGN ECO-FUNCTION INTO THE BUILT ENVIRONMENT THROUGH THE USE OF GREEN ROOFS AND CISTERNS.
- ULTIMATE GOAL: CREATE A BEAUTIFUL AND HEALTHY CREEK FOR HABITAT AND COMMUNITY.



THEREFORE, INCREASING RESTORING THE WETLANDS IN THE THORNTON CREEK WATERSHED WILL HELP CREATE HEALTHIER WILDLIFE HABITAT AND REDUCE THE POTENTIAL OF FLOODING FOR LOCAL RESIDENTS.

