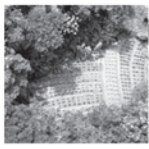
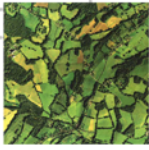


centuries not as a
self or feature, but
exhale
brick
blunt
soundl
past a
finding
evening
noise of s
like spare
citizens w
the real could merge.
We had crossed th
red forest; we ha
recognized a weir lodge
We could have sai
song outcasts p
y, wo



patterns, precedents, places



(RE)FRAMING THE CITY

RAINIER VALLEY

03.10.2008 OPEN SPACE SEATTLE 2100 STUDENT LEADER: Elizabeth Umbenhower

