

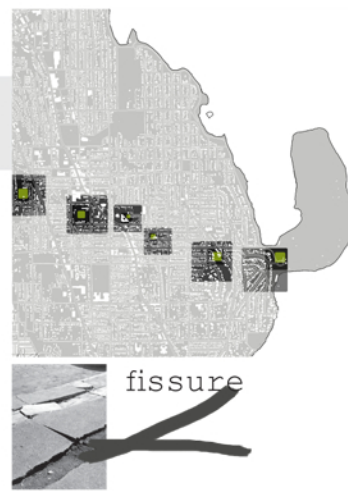
# design concept

The infrastructural matrix of the city is shaped by the need to transport goods and provide services to a dense urban population. Metropolitan centers require vast external energy inputs to maintain robustness. Matrix components comprise a homogenous network of concrete, petroleum and steel, materials which are conducive to vehicular mobility rather than facilitating non-motorized movement. Within this conventional paradigm, vegetation is interpolated as an aesthetic afterthought.

Through the mechanism of succession, **(re)framing the city** proposes to transform this static matrix from an unsustainable, homogenous unidirectional resource sink into a diverse, renewable, multi-directional vegetative matrix. The matrix retains the **integrity of the grid** thereby simultaneously honoring the **historic agricultural footprint** of Rainier Valley and the pervasive urban organizing principle, while also supporting ecological functionality. The proposed matrix will engage four typologies, or **frameworks**: forest, field, farm and fallow. These frameworks touch edges, overlap, blur, disappear and re-appear ultimately creating a green continuum. Like the successional model proposed within the ecological context, these linked frameworks will form a green corridor, one which provides a vital lifeline to neighborhood civic nodes and to the city at large. They will foster ecological, cultural and economic sustainability and awareness at different scales through **onsite remediation of stormwater**, carbon sequestration and phytodegradation. At the same time, these corridors act as cultural corridors, increasing community interaction by accommodating recreation, high density livable housing, alternative transportation modalities, urban agriculture and habitat for song birds, amphibians and small mammals.



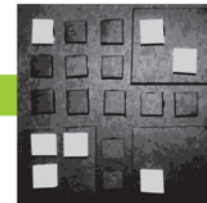
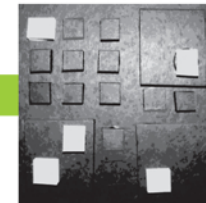
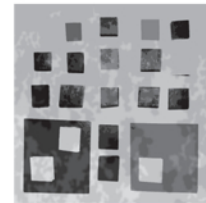
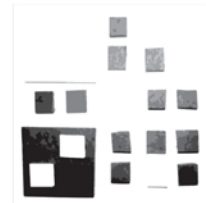
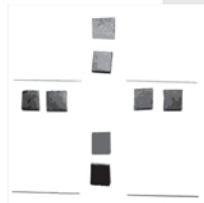
repose



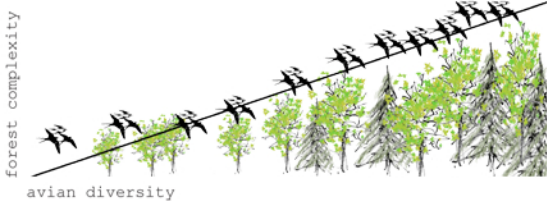
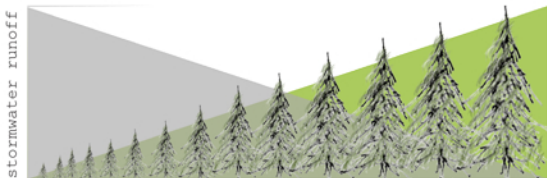
fissure



germinate



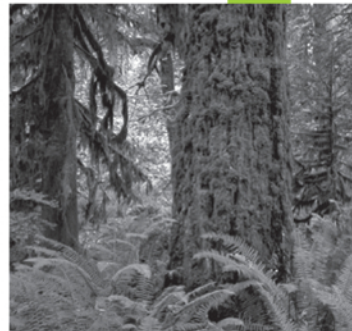
## ecological enhancements



## frameworks

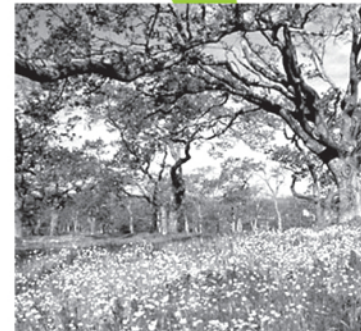


farm



forest

fallow



field

# (RE)FRAMING THE CITY

# RAINIER VALLEY

03.10.2008 OPEN SPACE SEATTLE 2100 STUDENT LEADER: Elizabeth Umbenhauer

