

OPEN SPACE 2100 WEST SEATTLE

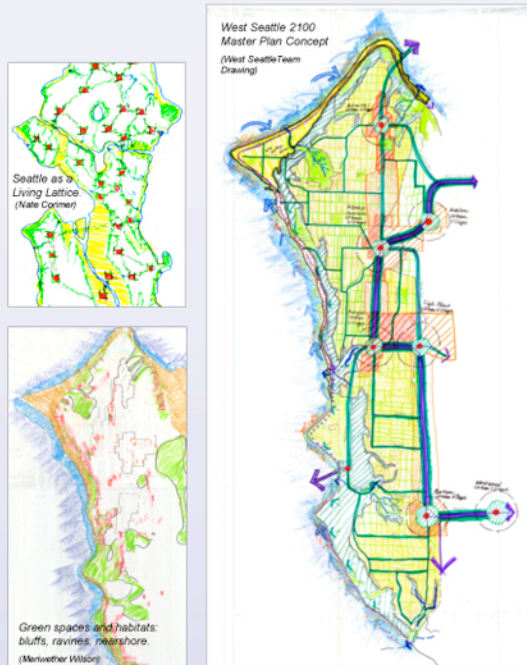
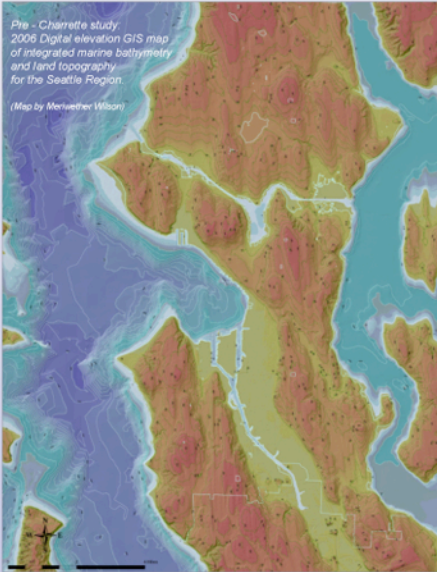
A LIVING LATTICE

STRATEGY -

Areas now considered hazards to people and built-environments may become our long-term ecological and economic foundation.

West Seattle as a 'Living Lattice', can connect people and environments in ways that are functionally sustaining over time:

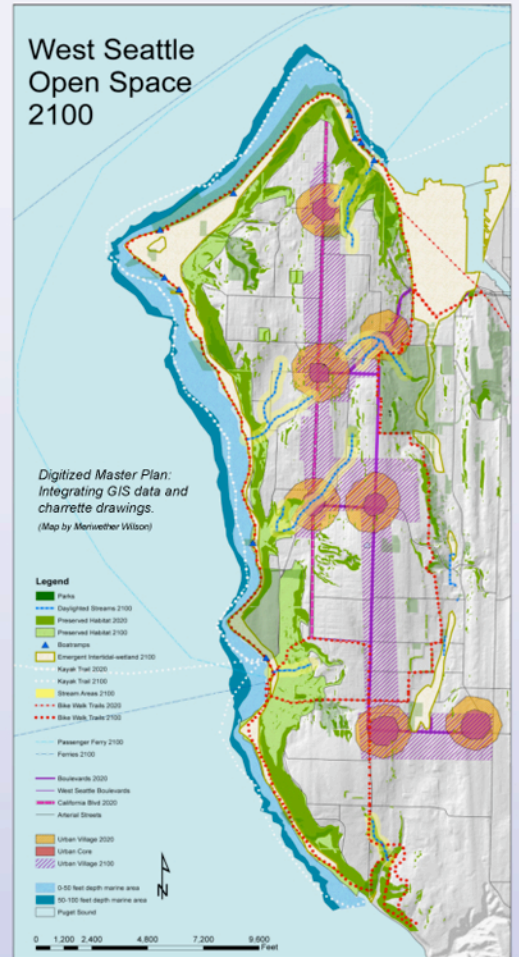
- **The Roots** - West Seattle's intrinsic pattern of plateaus and ravines can support urban density in the high-flat areas, while preserving and restoring creeks, bluffs and shorelines to reconnect habitats and hydrologic systems.
- **The Twigs, Branches, and Trunks** - linking communities with a network of greenways that converge and direct the flows of water and people.
- **The Leaves** - creating meaningful places that integrate built and natural worlds of our community.



PROCESS -

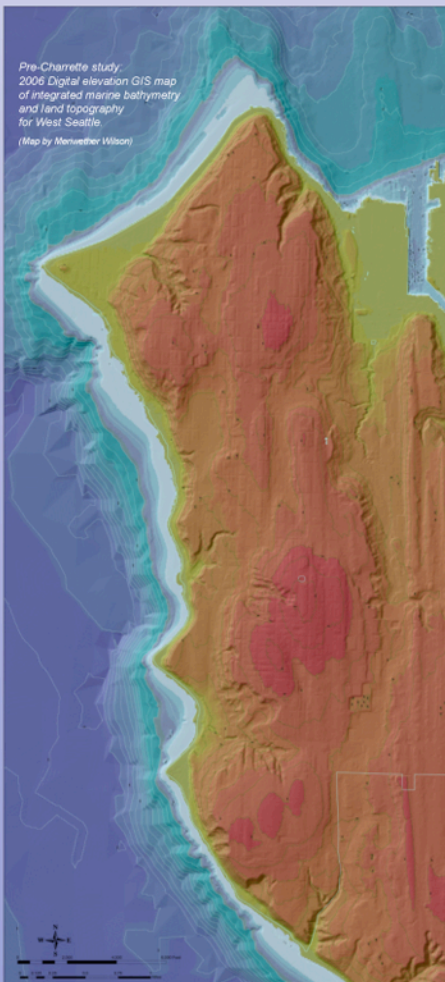
(Steve Sindiong)

- **Pre-charrette information baseline:** create geographic information maps to: a) examine existing elements and opportunities in economy, transportation, density, open space, shoreline; and b) create digital elevation maps to reveal the connectivity of marine bathymetry and land topography.
- **Charrette Drawings:** transition map ideas into drawings and vignettes at different scales (roots, twigs, branches) to explore and visualize future ecological and demographic scenarios.
- **Final Concept:** creation of 2020 and 2100 'vision maps' that combined geographic map data and drawings to suggest future areas of open space for people and habitats.



GOALS for 2100 -

- Increase species diversity, enhance tree canopy and re-establish hydrologic function.
- Restore slope-to-sediment supply from ridges down to shorelines.
- Strengthen codes to minimize building in ecologically sensitive and hazard zones.
- Encourage public shoreline acquisition for protection, access, and recreation.
- Diversify, balance transportation modes - 33% mass transit, 33% pedestrian, 33% vehicles.
- Enhance local food production - expanded farmers markets, community, school gardens.
- Activate urban plazas with open spaces at each urban village center.
- Realize the 'Living Lattice' concept for West Seattle as a demonstration area.



Pre-Charrette study 2006 GIS map of open space, transportation, density, shoreline access and climate vulnerability. (Map by Meriwether Wilson)

