

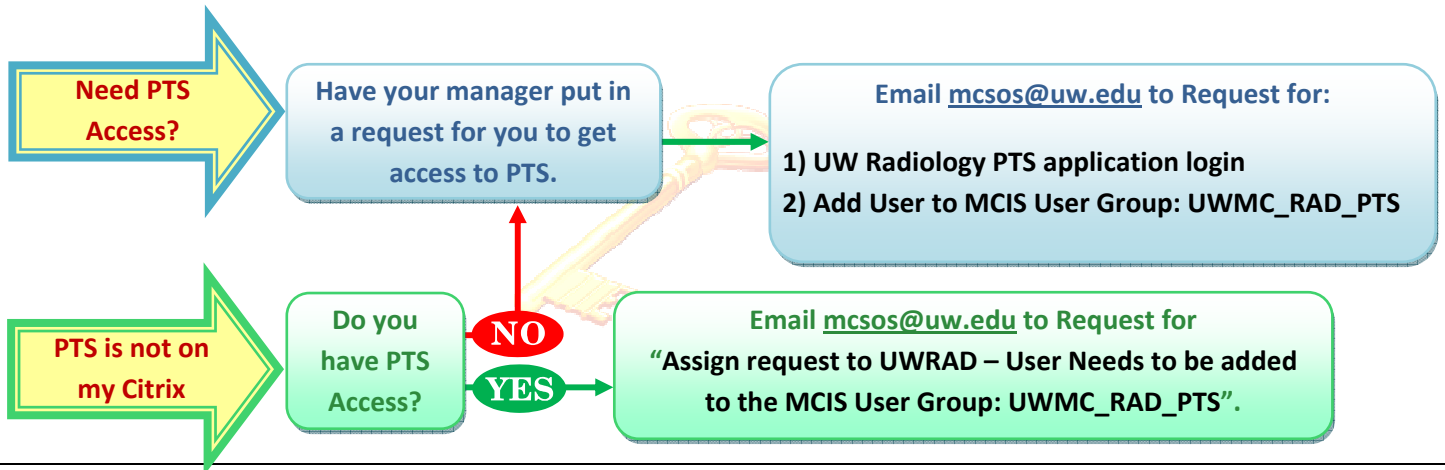
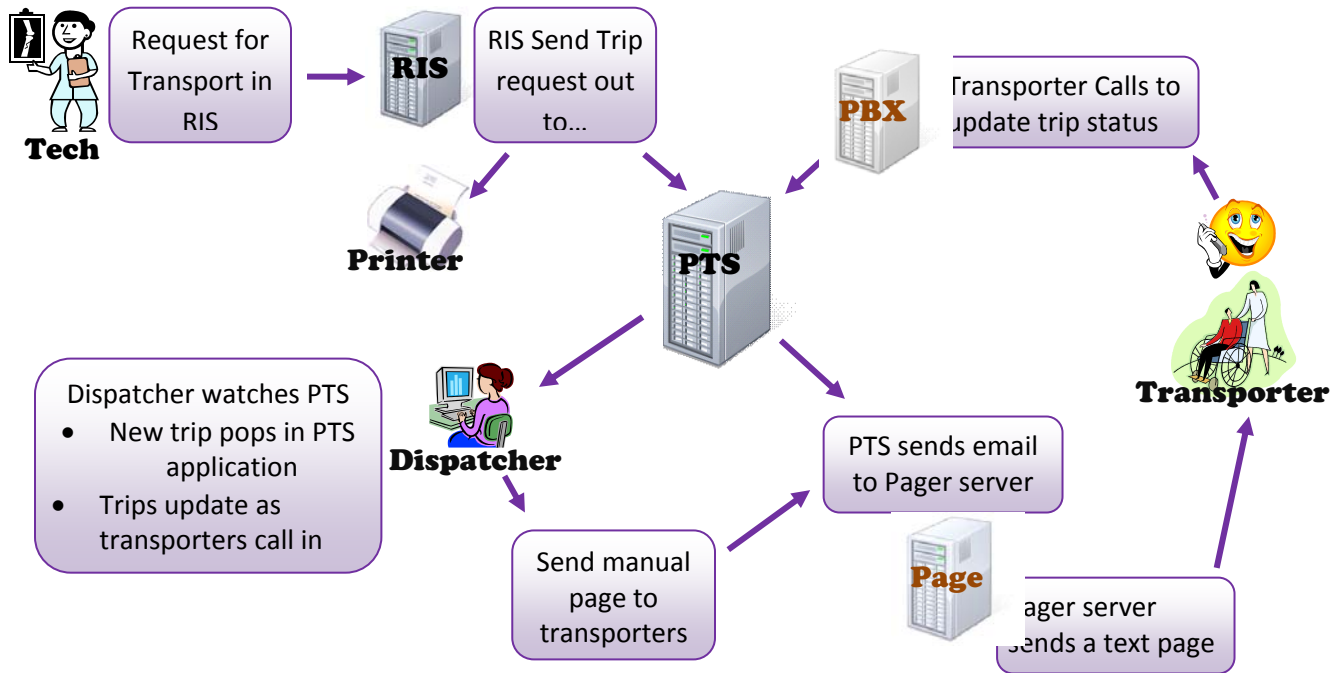


# PTS for New Users

UWMC Radiology Patient Transport System

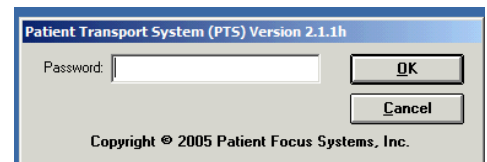
10/31/2011

## Quick Overview



## PTS Screen shots

Once you have Access to PTS, Launch PTS and login with your PASSWORD:



Once logged in, you will see the list of recent/current Trips along with the Transporters assigned to do the transport.

Patient Transport System (PTS) Version 2.1.1h for UWASH (PTS)

Dispatch List - Trips From Now Minus 1 Hours To Now Plus 24 Hours

Trip	*Req. Time	Appt	Patient	Transporter	From	To	Equip	Status	Note
8268	06/15/2011 13:17	13:42		L 201 - Lisa, R	UMRAD 1	8NE 8212	WC	CMPL	
8269	06/15/2011 13:26	13:52		R 25 - Joanna, W	6NE NE6262	UMUS 1	WC	CMPL	
8270	06/15/2011 13:29	13:55		L 201 - Lisa, R	5NE NE5228	UMRAD 9	WC	CNCL	
8271	06/15/2011 13:34	14:10		L 56 - Salome, P	UMCT 1	7SE SE7354	CART	CMPL	
8272	06/15/2011 13:47	14:12		L 48 - Matt, B	5NE NE5228	UMRAD 9	WC	CMPL	
8273	06/15/2011 13:48	14:21		L 201 - Lisa, R	UMANG 1	4SE 4320	CART	CMPL	
8274	06/15/2011 14:03	14:30		L 54 - Kim, M	4NE 4256	ERRAD 1	WC	DISP - DI	
8275	06/15/2011 14:06	14:32		L 48 - Matt, B	UMUS 1	6NE NE6262	WC	CMPL	
8276	06/15/2011 14:11	14:38		L 201 - Lisa, R	5NE NE5258	ERRAD 1	WC	DISP - Ar	
8277	06/15/2011 14:16	14:40		L 56 - Salome, P	7NE NE7250	UMRAD 1	WC	DISP - DI	
8278	06/15/2011 14:18	14:45		L 48 - Matt, B	4SE 4310	UMRAD 1	WC	DISP - Lv	
8279	06/15/2011 14:19	14:45		L (None)	7NE NE7262	ERCT 1	CART	PEND	
8280	06/15/2011 14:24	14:45		L (None)	UMRAD 9	5NE NE5228	WC	PEND	
8281	06/15/2011 14:27	14:54		L (None)	4NE	UMRAD 9	WC	PEND	
8282	06/15/2011 14:28	14:54		L (None)	4NE 4234	UMNRM 3	WC	PEND	
8283	06/15/2011 14:29	14:55		L (None)	6NE NE6228	UMNRM 1	WC	PEND	

Sort any column by clicking on the column title

Comments from RIS

To Toggle between "Req Time" and "Disp Tme"  
1) Click on a trip  
2) Shift + F1

STATUS	Description of Trip Status
PEND	NEW Trips Waiting for an Available Transporter
CNCL	CANCELED Trips (either duplicates or by patient/requestor)
DISP	Transporter ASSIGNED and a page sent by PTS.
DISP - Ar	PAGE Received, confirmed by Transporter.
DISP - Lv	TRANSPORT has begun at the "From" location.
DISP - DI	DELAY during Transport (Open up for delay details)
CMPL	COMPLETED trip

To view a detailed Trip Window, Double Click on any patient trip in your list.

Trip Detail: #28083(COMPLETED)

Close Print Transporter Bae

Assigned Transporter

Patient Name

Subject & Locations: Patient Schedule MR# [ ]

Subj. Name [ ] Subj. Type IN-PATIENT

Trip Type Regular Equip. STRETCHER Urgency Routine

From Loc UM Resrc ERCT1 To Loc 6NE Family Medicine

Room/Bed 1 Room/Bed NE6234/01

Requested by [ ] Entered by: (None)

Suggested Times:

Dispatch:	Appointment:	Duration
03:26	03:52 06/14/2011	23.53

Delay cut 5 min. Delay Type Delay Duration

Details...

Actual Times: Request: 03:16 Pickup Arrival: 03:18

Duration: Dispatch: 03:17 Pickup Departure: 03:20

Completion: 03:28

DISP - DI

PEND

DISP

CMPL

DISP - Ar

DISP - Lv

Comments from RIS

Note: please bring wheelchair