

# Traveling Safely to School

**Bill Kloos Scholarship Application  
2015**

**By: Kamilah Buker**

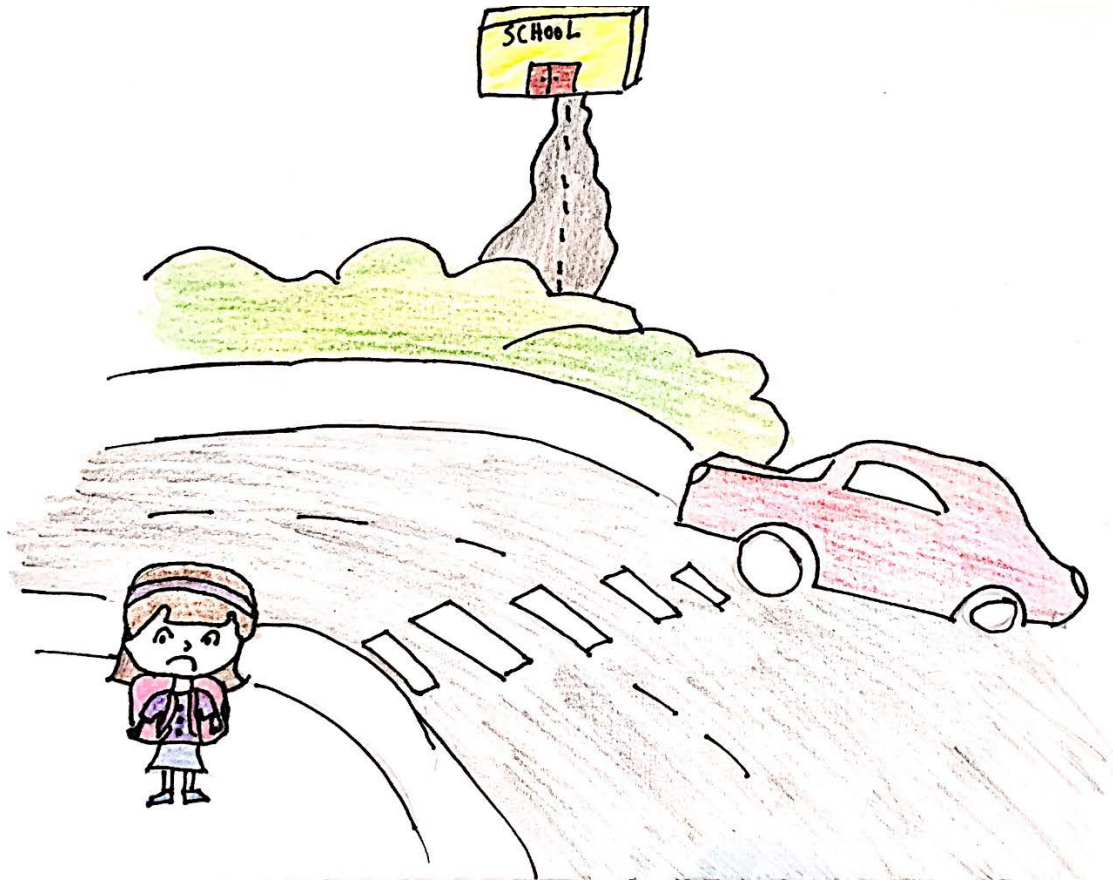


Sally, Hannah, and Ben, are the very best of friends.

At school they must meet every day, but how do they know what's the best way?

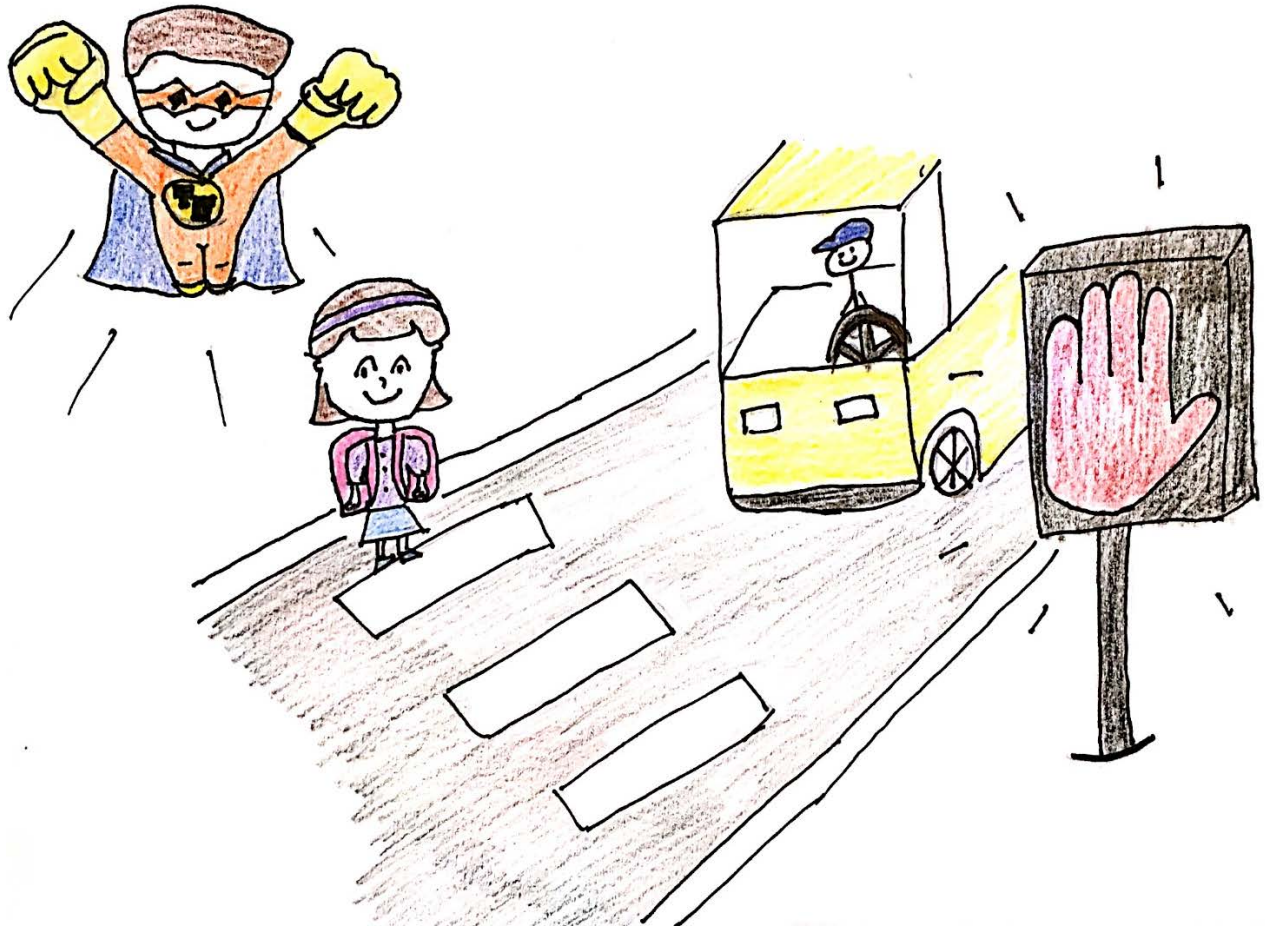


**Meet Tod the Mighty Traffic Engineer, he will  
get the friends to school without any fear.**



Hannah enjoys walking to school because she lives nearby.

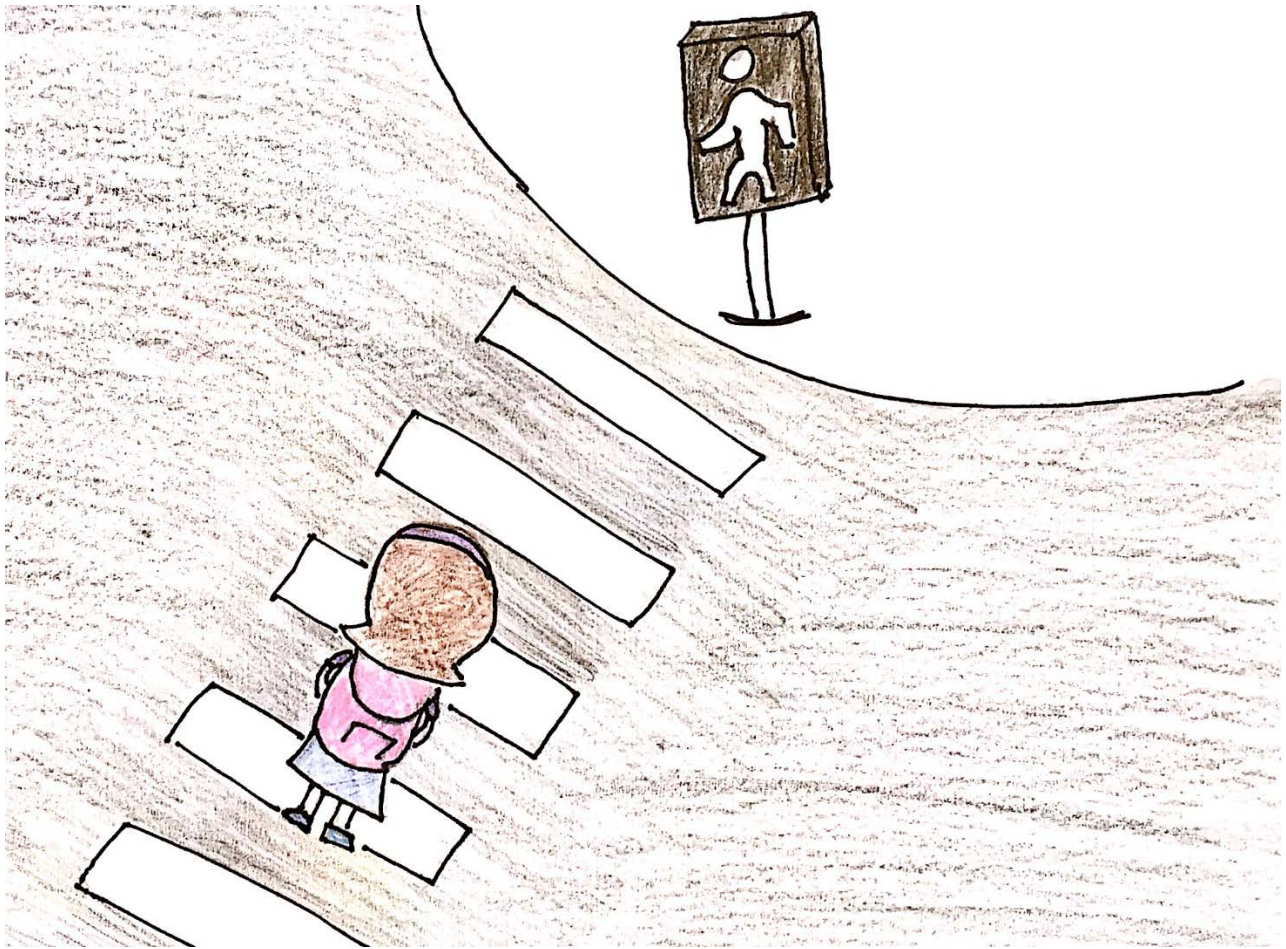
But how will she cross the busy street safely, how can she try?



**Tod the Mighty Traffic Engineer** is here to the rescue.

He creates a walk signal to give Hannah her queue.

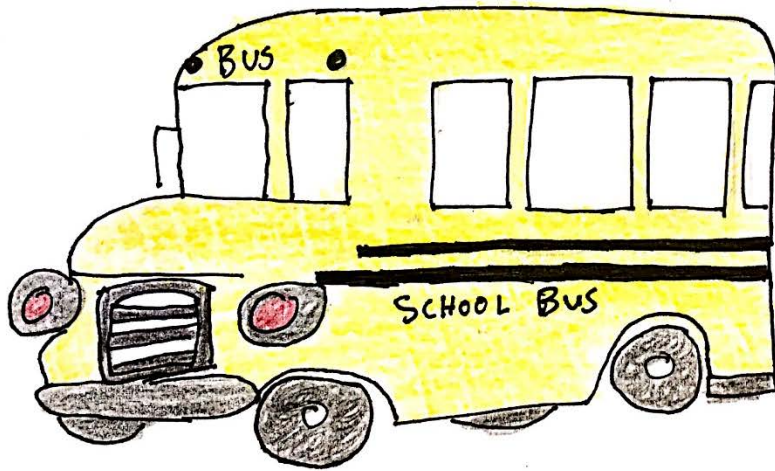
When the red hand turns into a tiny person, it is safe to travel across the crosswalk...



... You will even hear a robot voice begin to talk.

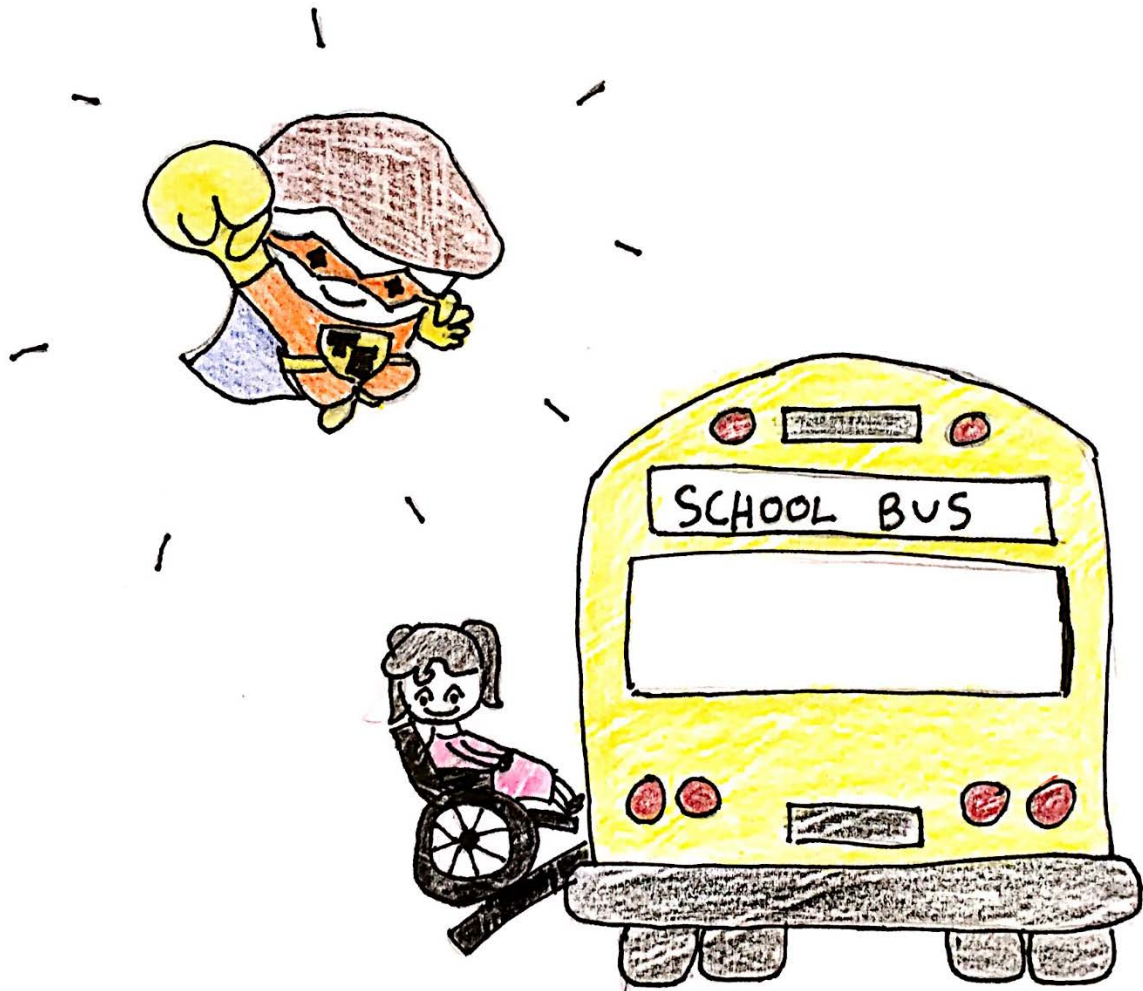
“Walk” it will say while all the cars wait.

But Hannah still looks both ways, even if she might be late.



Sally likes taking the bus because it is yellow,  
and the seats look as soft as a pillow.

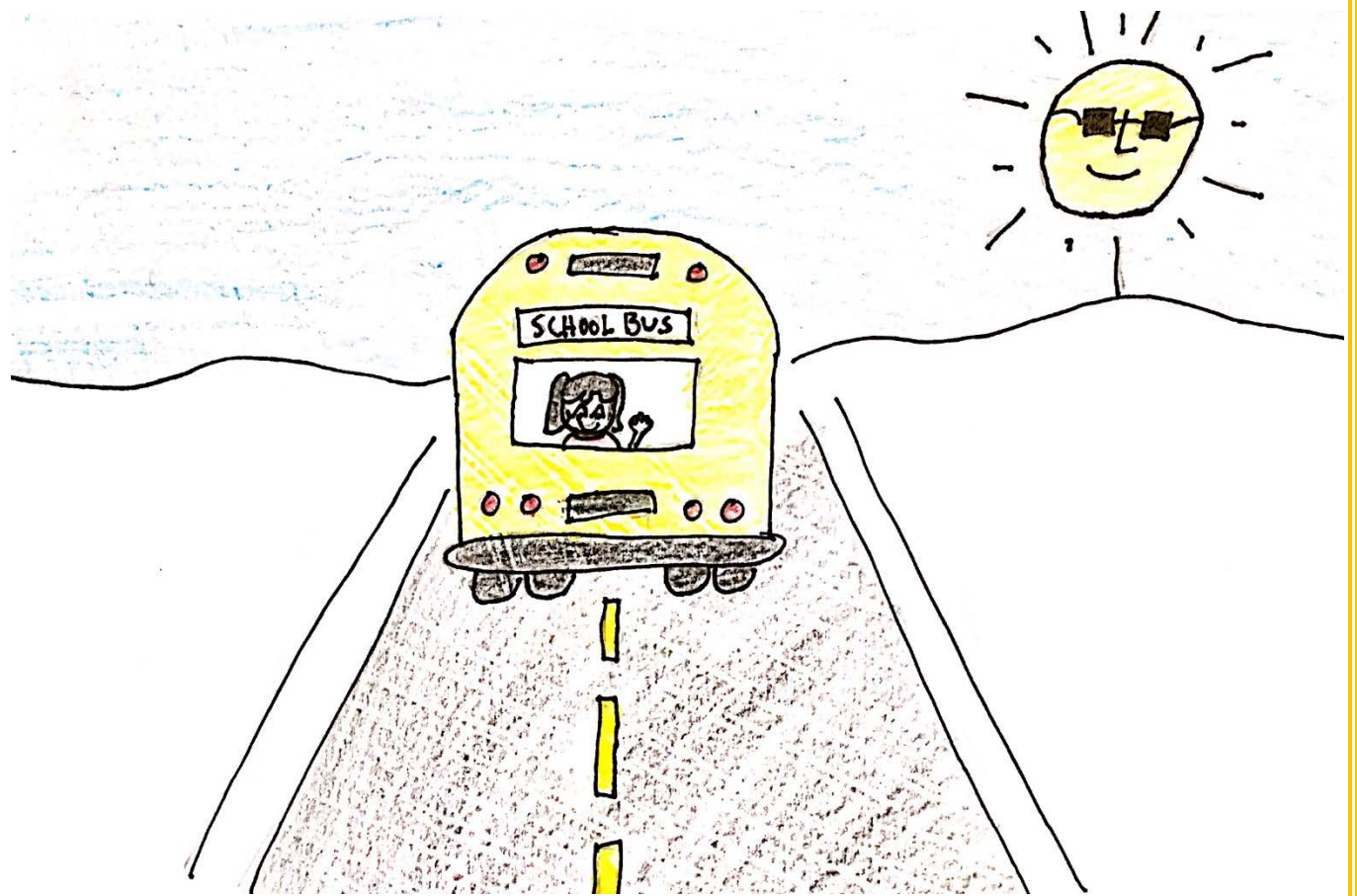
Sally travels around in a wheelchair, so what if  
the bus has even one stair?



Have no fear, **Tod the Mighty Traffic Engineer** is here!

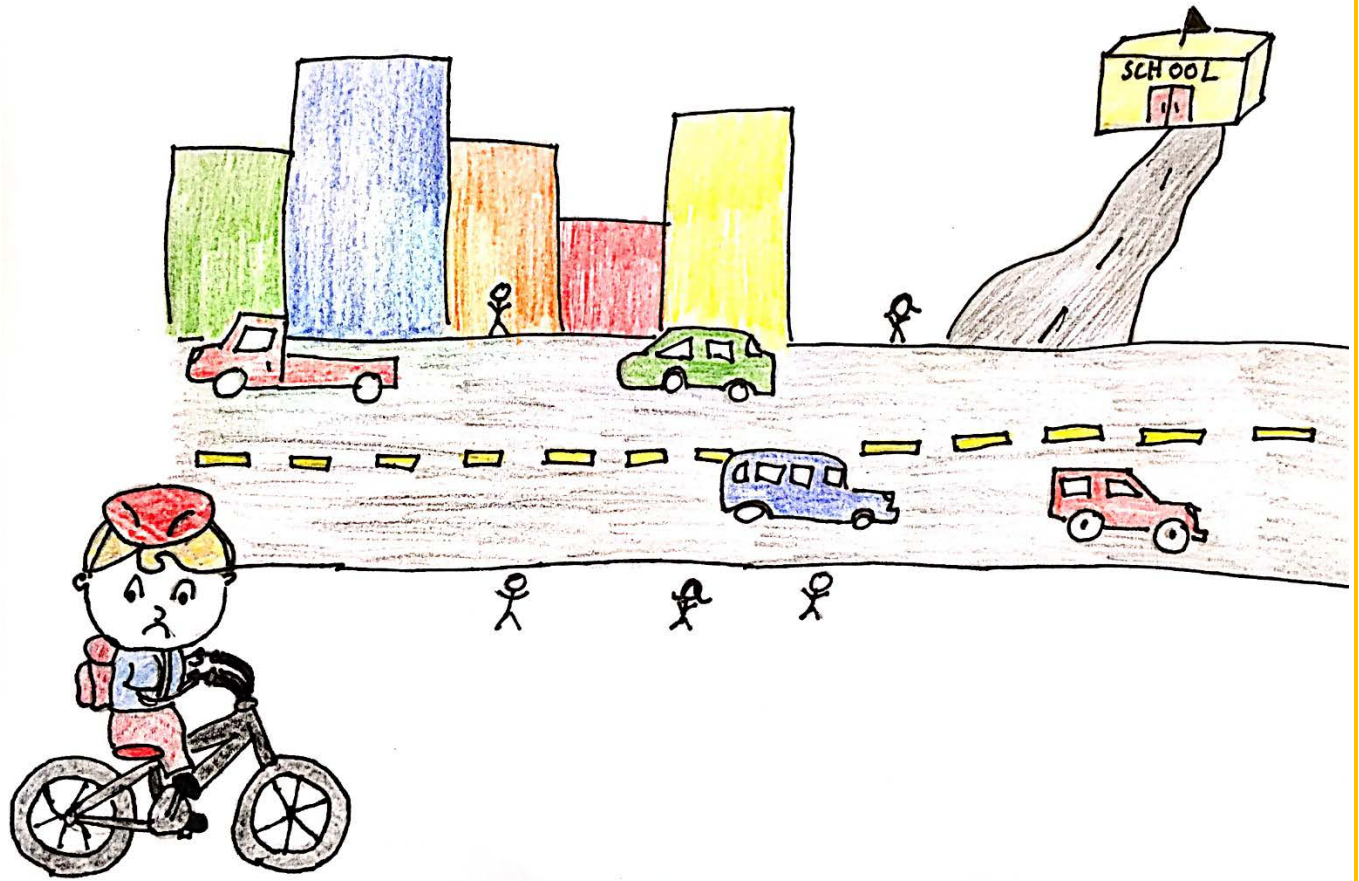
A magic ramp extends out from the bus, and lifts Sally all the way up without any fuss.





Off goes Sally waving goodbye.

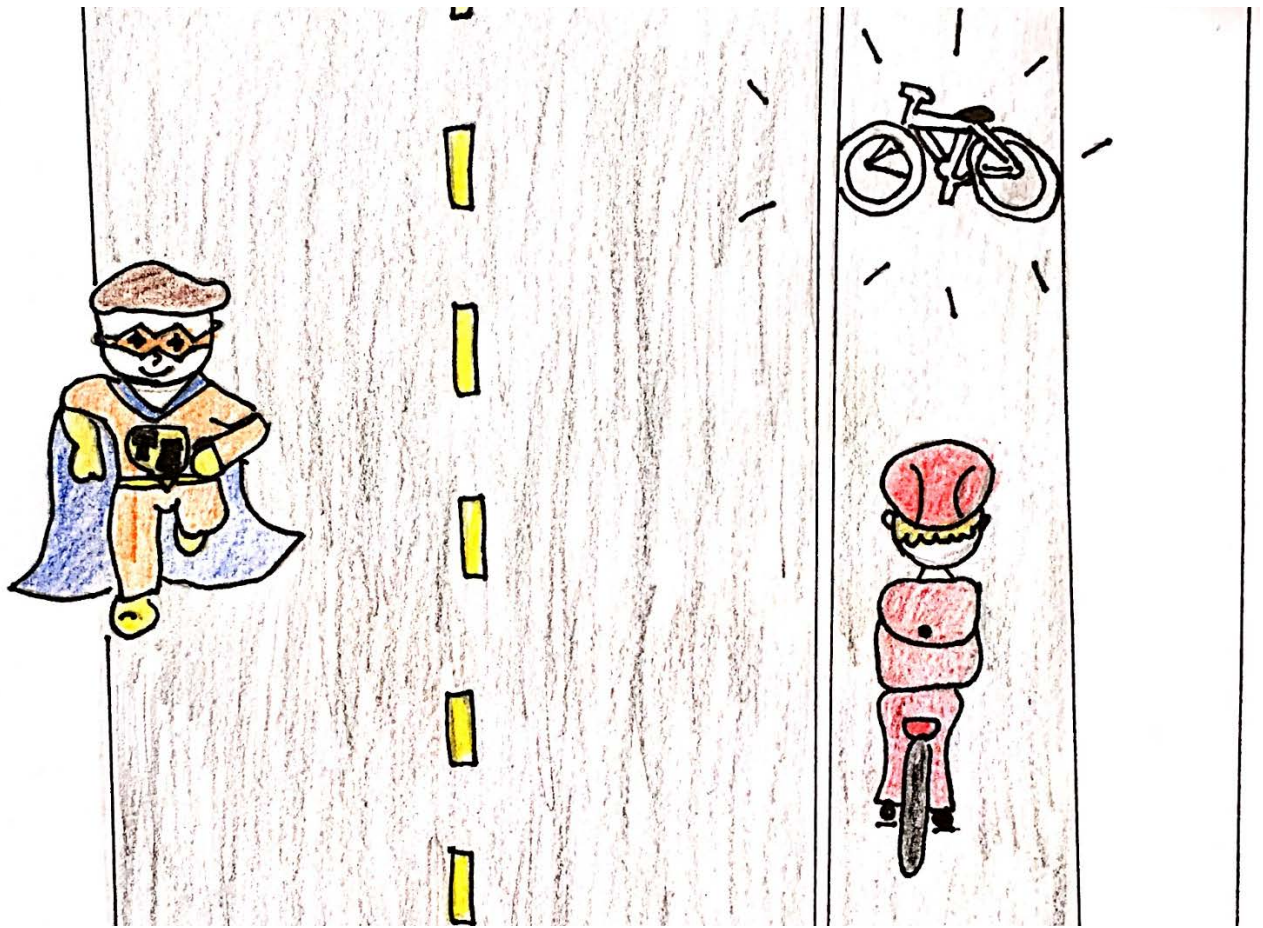
Now let's find Ben, he must be nearby.



Here he comes pedaling fast on his bike, getting to school this way he really does like.

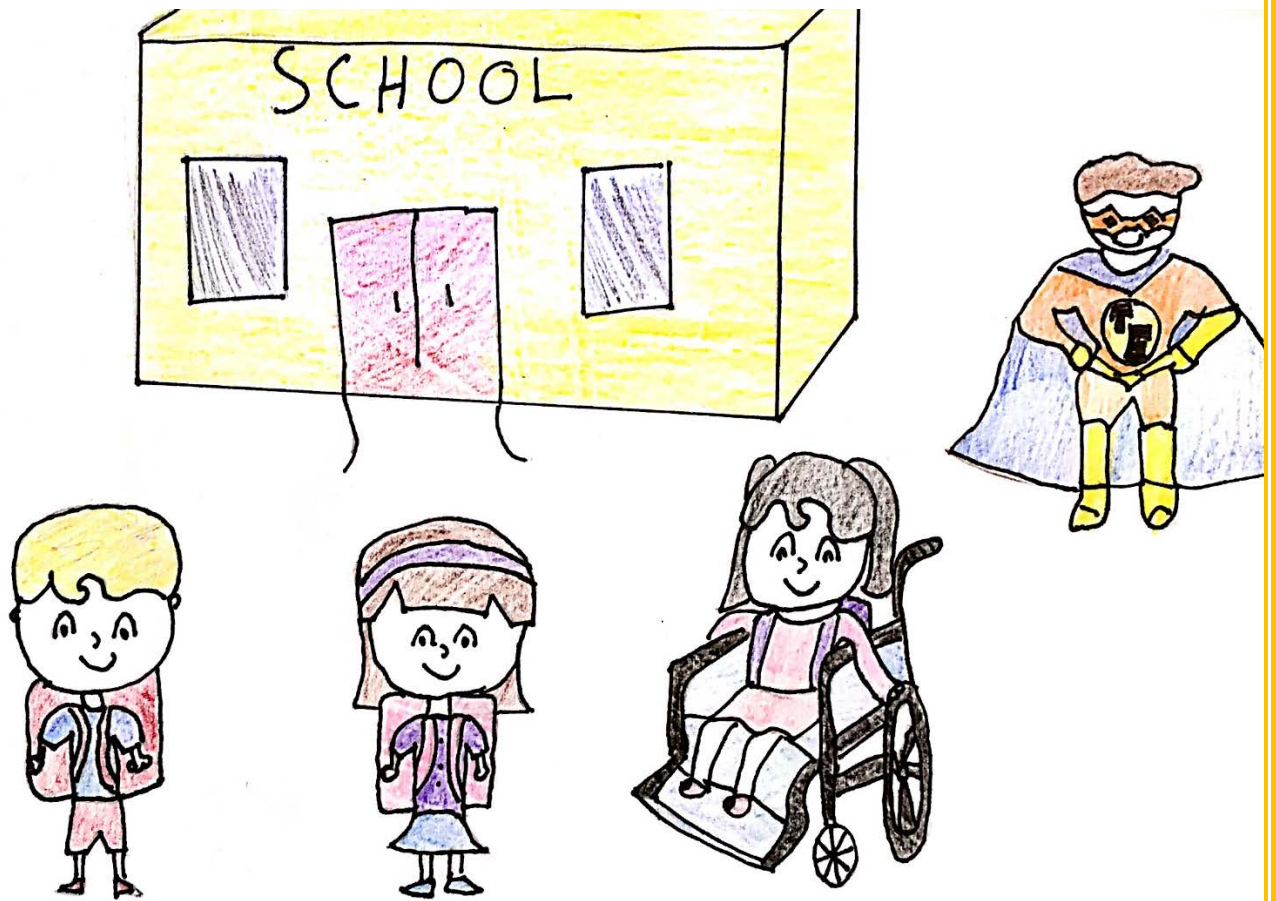
With all the people on the sidewalk, how will he get through?

The roadway has cars traveling fast and is unsafe too!



**Tod the Mighty Traffic Engineer** knows what to do! He creates a shiny bright bike lane good as new.

A shiny white line now separates Ben from the cars traveling fast, and now all the walkers he can ride safely past.



Getting to school should be both safe and fun.

That's where **Tod the Mighty Traffic Engineer**  
can get the job done.

Now that the friends have made it to school  
safe and sound...



... **Tod the Mighty Traffic Engineer** can no longer stick around.

On to the next traffic problem he goes without any rest, because keeping people traveling safe is what he does best.

**The End**