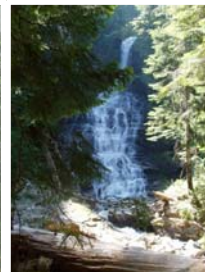
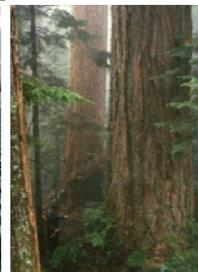


North Cascadia Adaptation Partnership:

Climate Change, Wildlife, and Wildlife Habitat
January 30-31, 2012

Crystal Raymond
USFS, PNW Research Station, Seattle, WA



North Cascadia Adaptation Partnership

Forest Service – National Park Service collaboration to increase climate change awareness and facilitate adaptation on parks and forests.

Core Team



- USFS, PNW Station

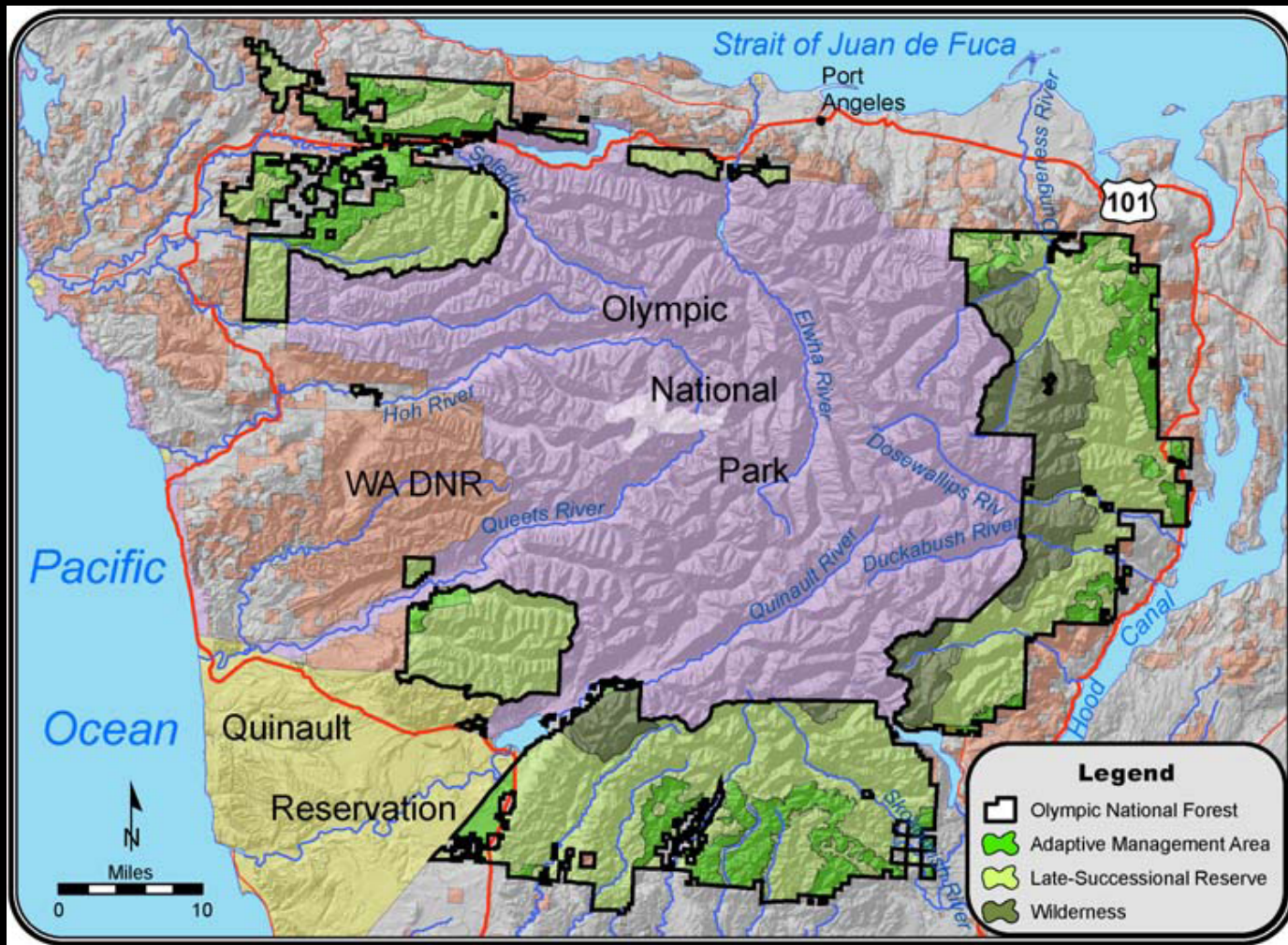


- National Park Service



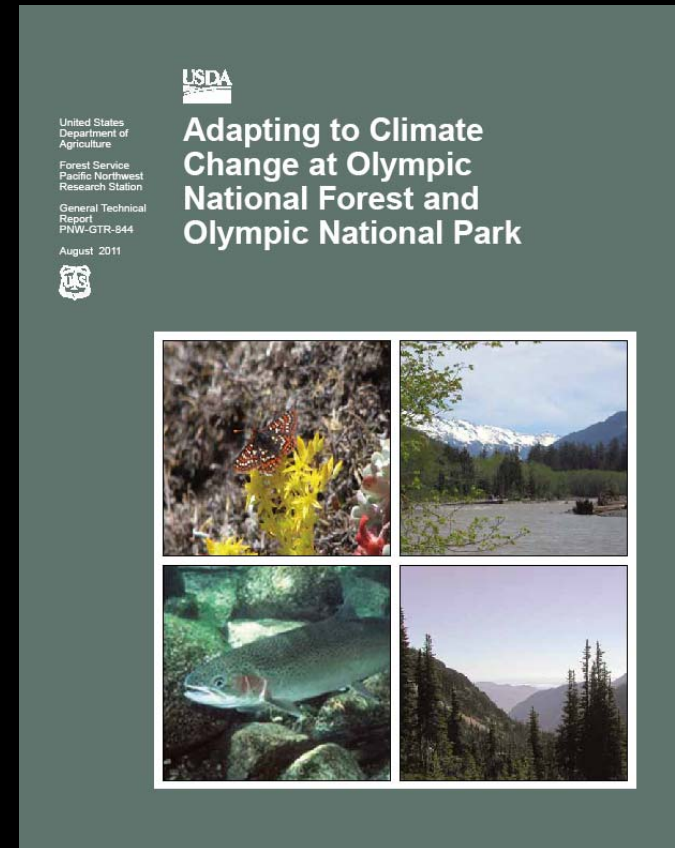
- Climate Impacts Group

Olympic Climate Change Case Study

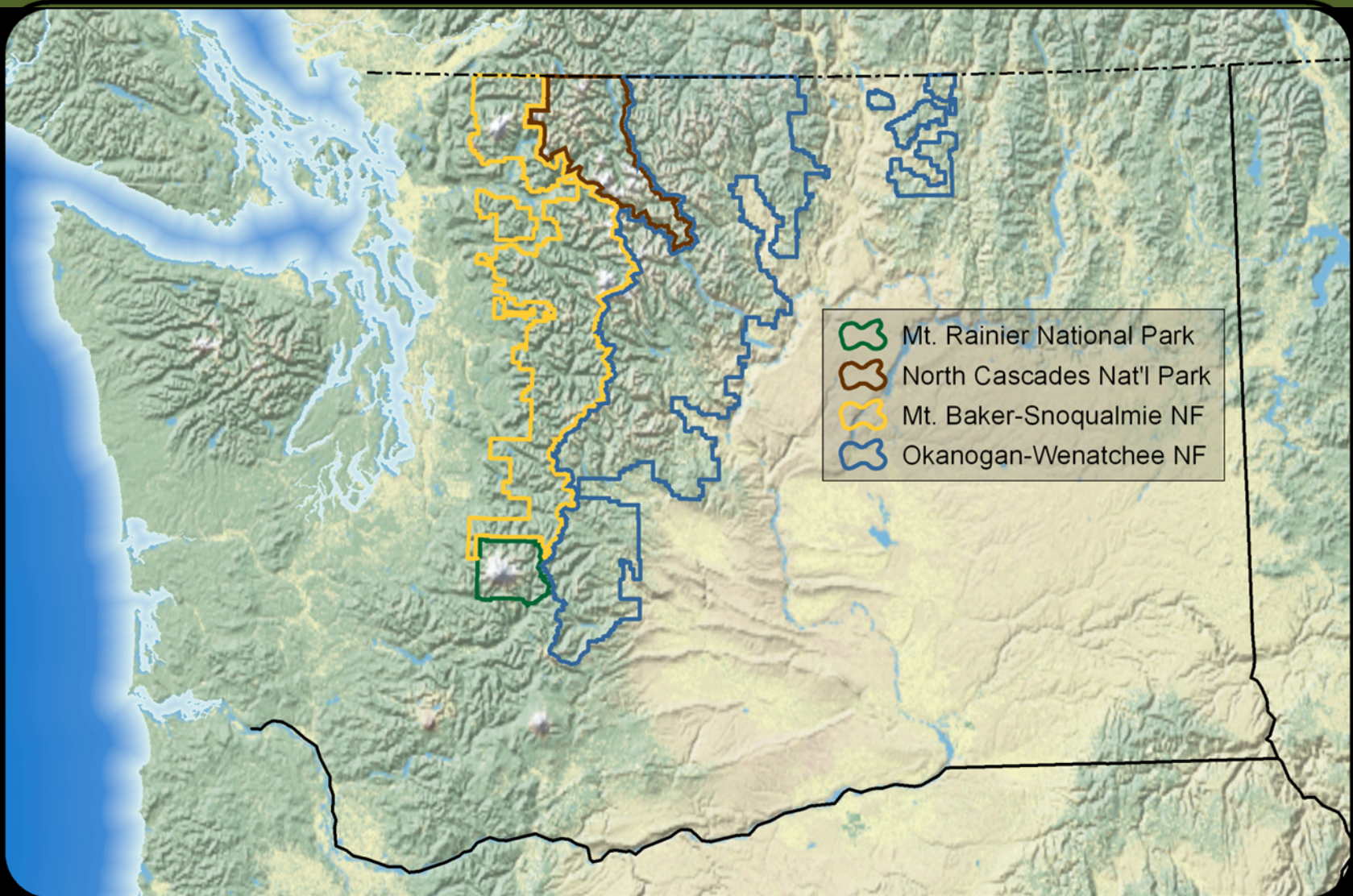


Olympic Case Study Report

http://www.fs.fed.us/pnw/pubs/pnw_gtr844.pdf



NCAP Project Area



North Cascades and Mount Rainier National Parks
Mount Baker-Snoqualmie and Okanogan Wenatchee NFs

NCAP Process Overview

1. Education

Increase climate change awareness with park and forest staff.

2. Vulnerability Assessment

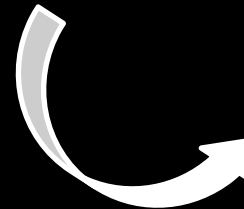
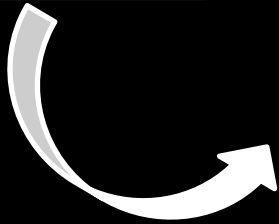
Review climate projections and identify resource sensitivities.

3. Adaptation Planning

Develop science-based adaptation options.

4. Implementation

Incorporate adaptation strategies into existing management plans.



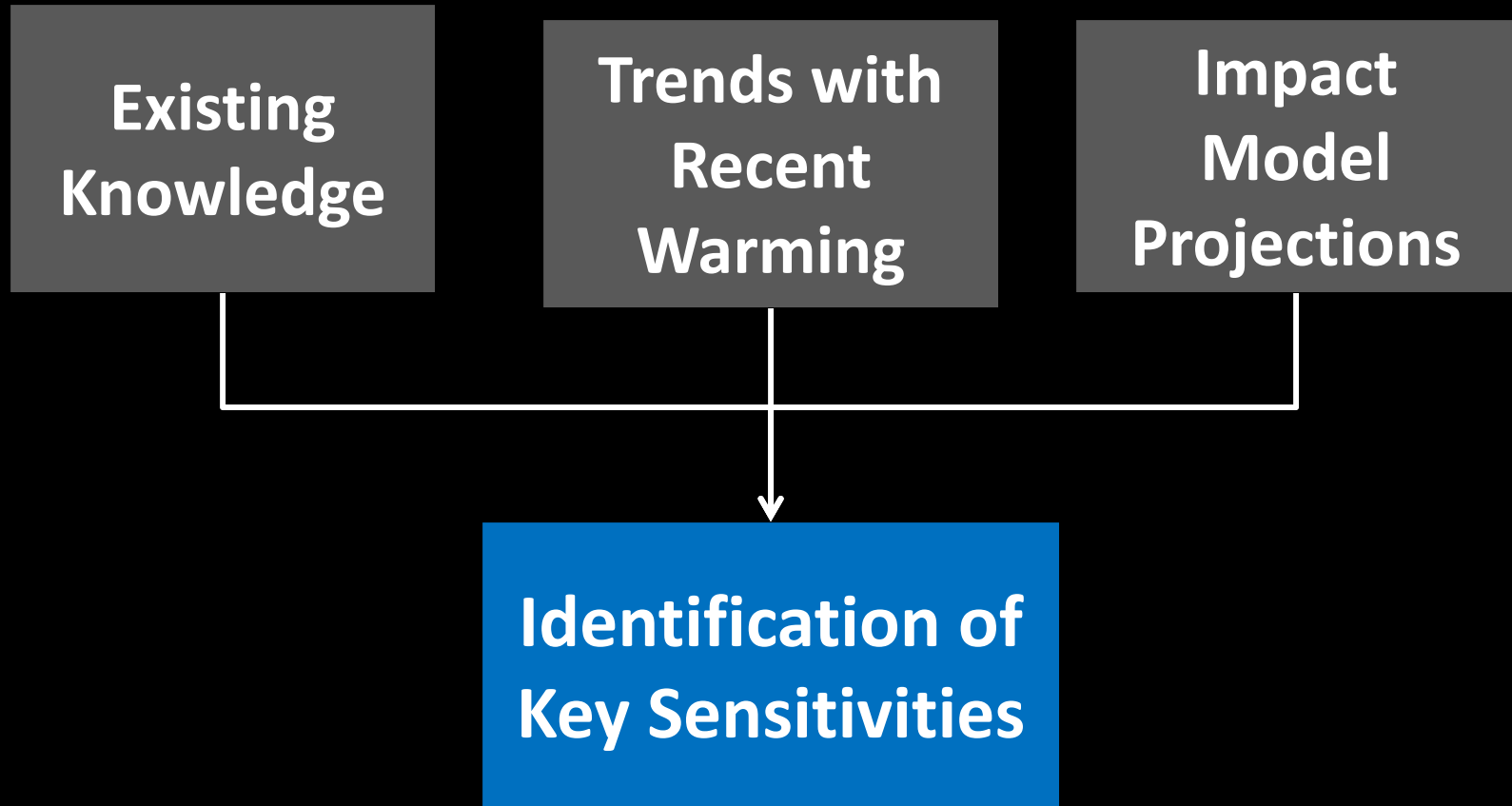
Vulnerability Assessment and Adaptation

Resource Sector Focus Areas

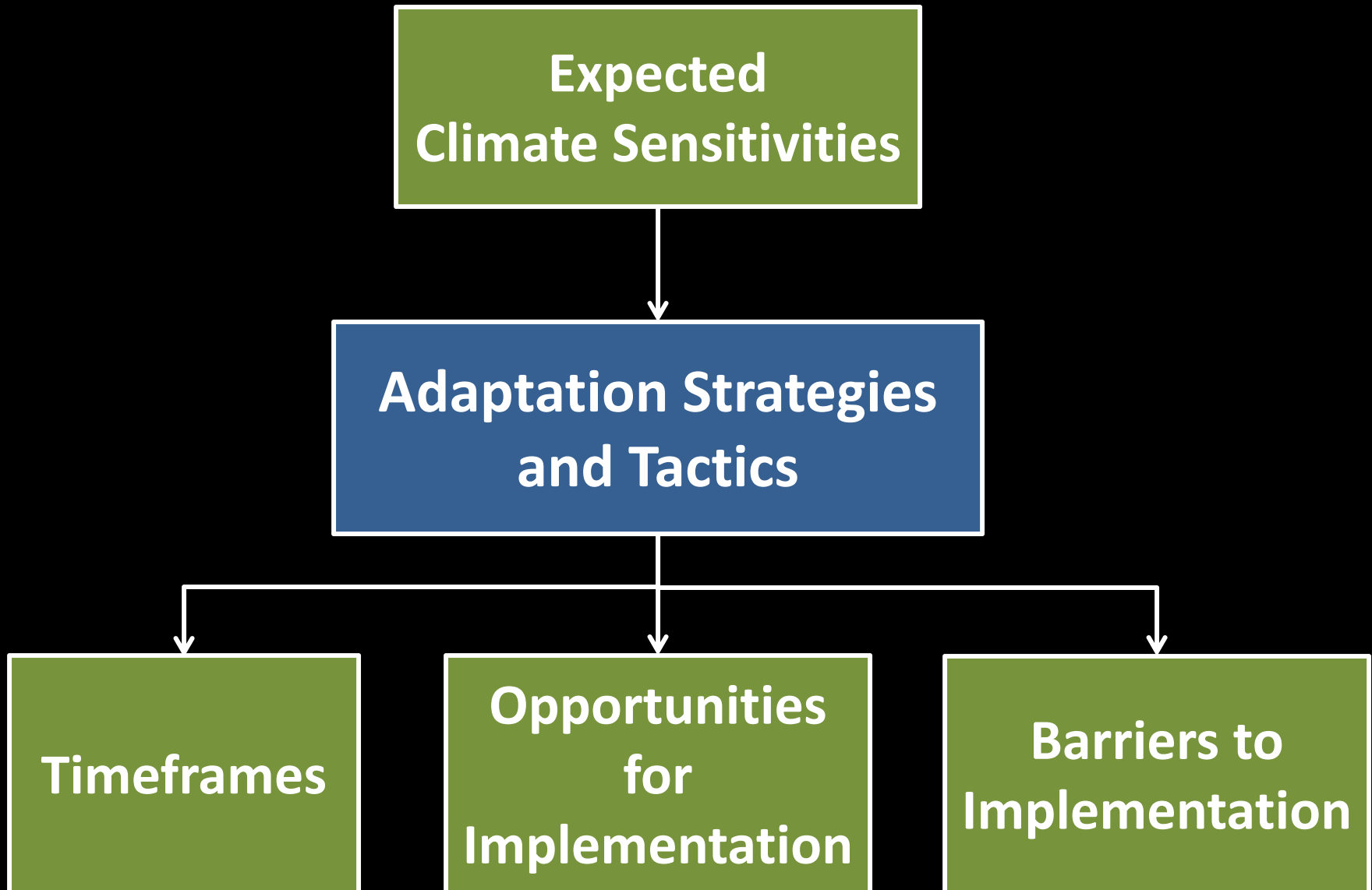
- Fish and fish habitat (July 27 – 28)
- Vegetation and ecological disturbances (Nov. 7 – 8)
- Hydrology and access (Nov. 30 – Dec. 1)
- Wildlife and wildlife habitat (Jan. 30-31, 2012)



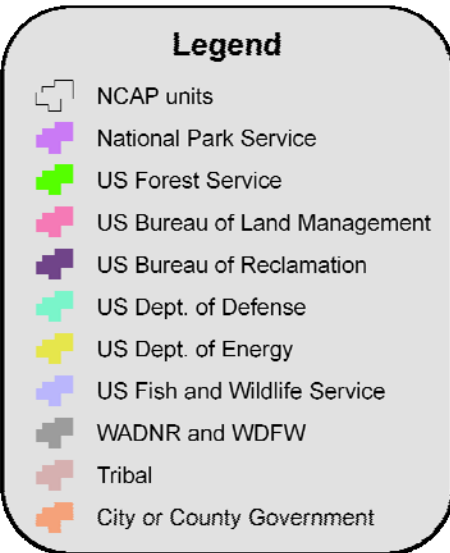
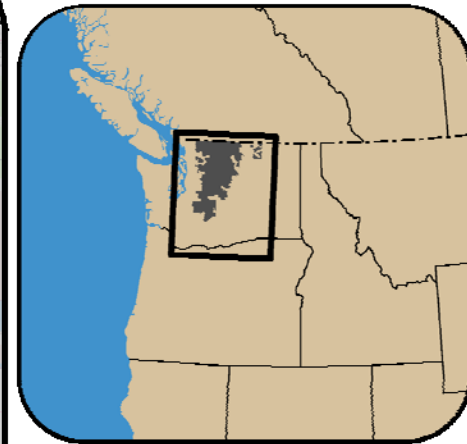
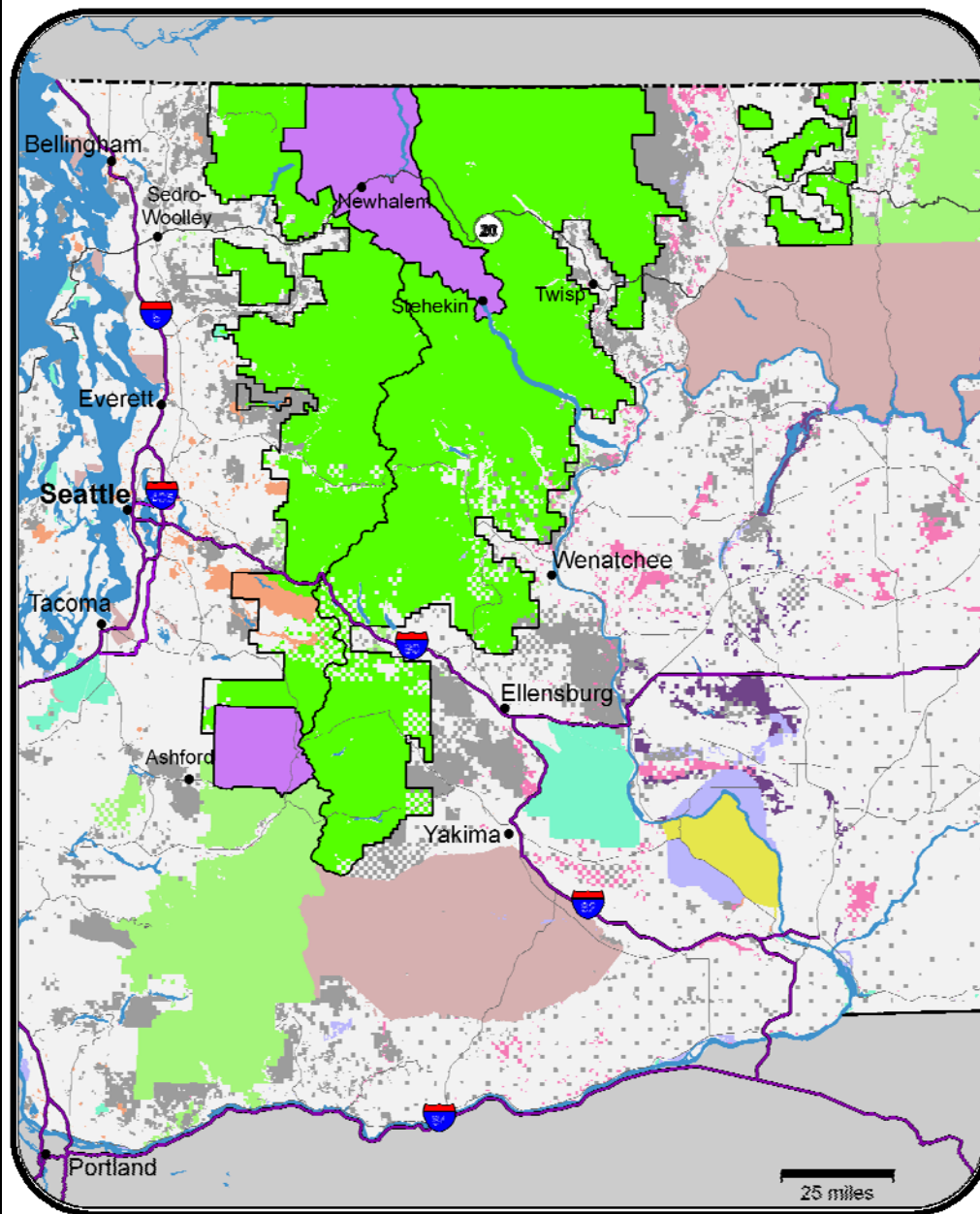
Vulnerability Assessment



Adaptation Planning



All-Lands Approach



Forest Service Scorecard



Organizational Capacity ✓

1. Employee education
2. Designated climate change coordinators
3. Program guidance

Mitigation and Sustainable Consumption

9. Carbon assessment and stewardship
10. Sustainable operations

USFS Climate Change Response

Engagement

4. Integrate science and management
5. Other partnerships ✓

Adaptation

6. Assessing vulnerability
7. Adaptation actions
8. Monitoring ✓

* To be completed annually by each National Forest and Grassland.

NPS Climate Change Response Program



- Science: develop and apply the best available climate change science. ✓
- Adaptation: incorporate climate change responses in all levels of planning. ✓
- Communication: distribute climate change knowledge internally and externally. ✓
- Mitigation: limit GHG emissions and incorporate mitigation practices.