



# Pacific Northwest Climate Change Vulnerability Assessment

*UW, TNC, USGS, NWF, UW-CIG, WDFW, ODFW, IDFG, MTFWP, WYGF, NPS, USFS, USFWS...*

# Goal

To assess species and ecosystem vulnerabilities to climate change to inform conservation and management activities in the Pacific Northwest.



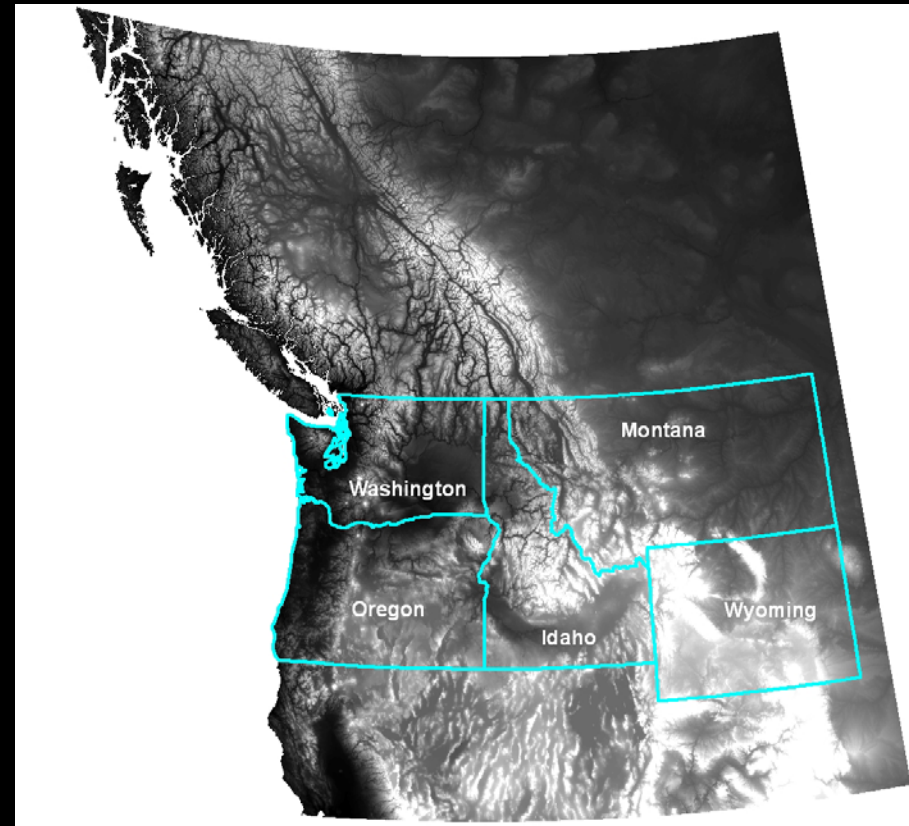
# Study Objectives

Study Area

Assess inherent sensitivity to climate-change of species and systems

Project potential impacts

Facilitate adaptation-strategy development (e.g., modification of SWAPs)





# Climate Sensitivity Database

- *Species*
- *Systems*



# Sensitivity Components

Dispersal abilities (distance & barriers)

Physiological factors

Sensitive habitats

Disturbance regimes

Life history (reproductive strategy)

Generalist/Specialist

Ecological Relationships

Interacting Non-Climatic stressors

Other?

Overall user ranking (not included)

# Climate Sensitivity Database



## Home Page

View Edit

### Welcome!

Welcome to the Sensitivity Database.

Climate changes poses a daunting challenge to natural resource managers and in response the University of Washington has partnered with key collaborators to conduct a climate change sensitivity assessment. This assessment is designed to evaluate the sensitivity of the species and ecological systems of the Pacific Northwest to climate change.

This digital database summarizes the inherent climate-change sensitivities for species and habitats of concern throughout the Pacific Northwest and will provide resource managers and decision makers with some of the most basic and most important information about how species and systems will likely respond to climate change.

Please come take a look!

### Recent Science Updates

+ Add news story

- Rapid Range Shifts of Species Associated with High Levels of Climate Warming  
Science 19 August 2011: Vol. 333 no. 6045 pp. 1024-1026 DOI: 10.1126/science.1206432  
I-Ching Chen, Jane K. Hill, Ralf Ohlemüller, David B. Roy, Chris D. Thomas

The distributions of many terrestrial organisms are currently shifting in latitude or elevation in response to changing...

### Recent Updates

Spermophilus variegatus

Updated: 19 min 16 sec ago

Neotamias umbrinus

Updated: 20 min 25 sec ago

Carduelis psaltia

Updated: 24 min 43 sec ago

Elgaria coerulea principis

Updated: 1 week 4 days ago

Quercus garryana var. garryana

Updated: 3 weeks 5 days ago

Pinus albicaulis

Updated: 3 weeks 6 days ago

Red-tailed Chipmunk

Updated: 4 weeks 5 days ago

Plethodon idahoensis

Updated: 4 weeks 5 days ago

Martes pennanti

Updated: 4 weeks 6 days ago

Vulpes macrotis - rionsinger

Updated: 5 weeks 2 days ago

1 of 70 >>

Browse all species



# Climate Sensitivity Database

[HOME](#)[ADD SPECIES](#)[BROWSE SPECIES](#)[ADD SYSTEM](#)[BROWSE SYSTEMS](#)[YOUR PROFILE](#)[LOG OUT](#)

## Climate Change Sensitivity Database

### Home Page

[View](#)[Edit](#)[Devel](#)

Welcome to the Sensitivity Database.

Climate changes poses a daunting challenge to natural resource managers and in response the University of Washington has partnered with key collaborators to conduct a climate change sensitivity assessment. This assessment is designed to evaluate the sensitivity of the species and ecological systems of the Pacific Northwest to climate change.

This digital database summarizes the inherent climate-change sensitivities for species and habitats of concern throughout the Pacific Northwest and will provide resource managers and decision makers with some of the most basic and most important information about how species and systems will likely respond to climate change.

Please come take a look!

### Recent Science Updates

[+ Add news story](#)

#### Rapid Range Shifts of Species Associated with High Levels of Climate Warming

Submitted by **Michael Case** on Tue, 2011-08-30 14:45

Science 19 August 2011: Vol. 333 no. 6045 pp. 1024-1026 DOI: 10.1126/science.1206432

I-Ching Chen, Jane K. Hill, Ralf Ohlemüller, David B. Clark, Christopher J. Conner, et al.

### Recent Updates

**Arbutus menziesii**

**Updated:** 11 weeks 1 day ago

**Acer macrophylla**

**Updated:** 11 weeks 1 day ago

**Alnus rubra**

**Updated:** 11 weeks 1 day ago

**Euphydryas editha taylori**

**Updated:** 14 weeks 6 days ago

**Ascaphus truei**

**Updated:** 22 weeks 5 days ago

**Aegolius funereus**

**Updated:** 22 weeks 6 days ago

**Aechmophorus occidentalis**

**Updated:** 22 weeks 6 days ago

# Lynx canadensis

[View](#)[Edit](#)[Revisions](#)

Title: \*

Lynx canadensis

Common Name:

Canadian Lynx

Enter known common names, one name per line.

This Species is Completed

## Taxonomy

[Dispersal Ability](#)[Disturbance Regimes](#)[Generalist/Specialist](#)[Physiology](#)[Life History](#)[Sensitive Habitats](#)[Ecological Relationships](#)[Interacting non-climatic stressors](#)[Authoring information](#)

By jlawler on 2009-09-05  
19:53:35 -0800

[Other Sensitivities](#)[Overall User Ranking](#)[Revision information](#)

New revision

[Menu settings](#)

Please pay close attention to the pink boxes in each tab. If time is limited the data

Scientific Name: \*

Lynx canadensis

Genus and species

Geography: \*

Idaho

For what geographic extent is this sensitivity information relevant for? You may list its entire range, one or multiple states, provinces, or regions, such as the Pacific Northwest.

Realm:

Terrestrial

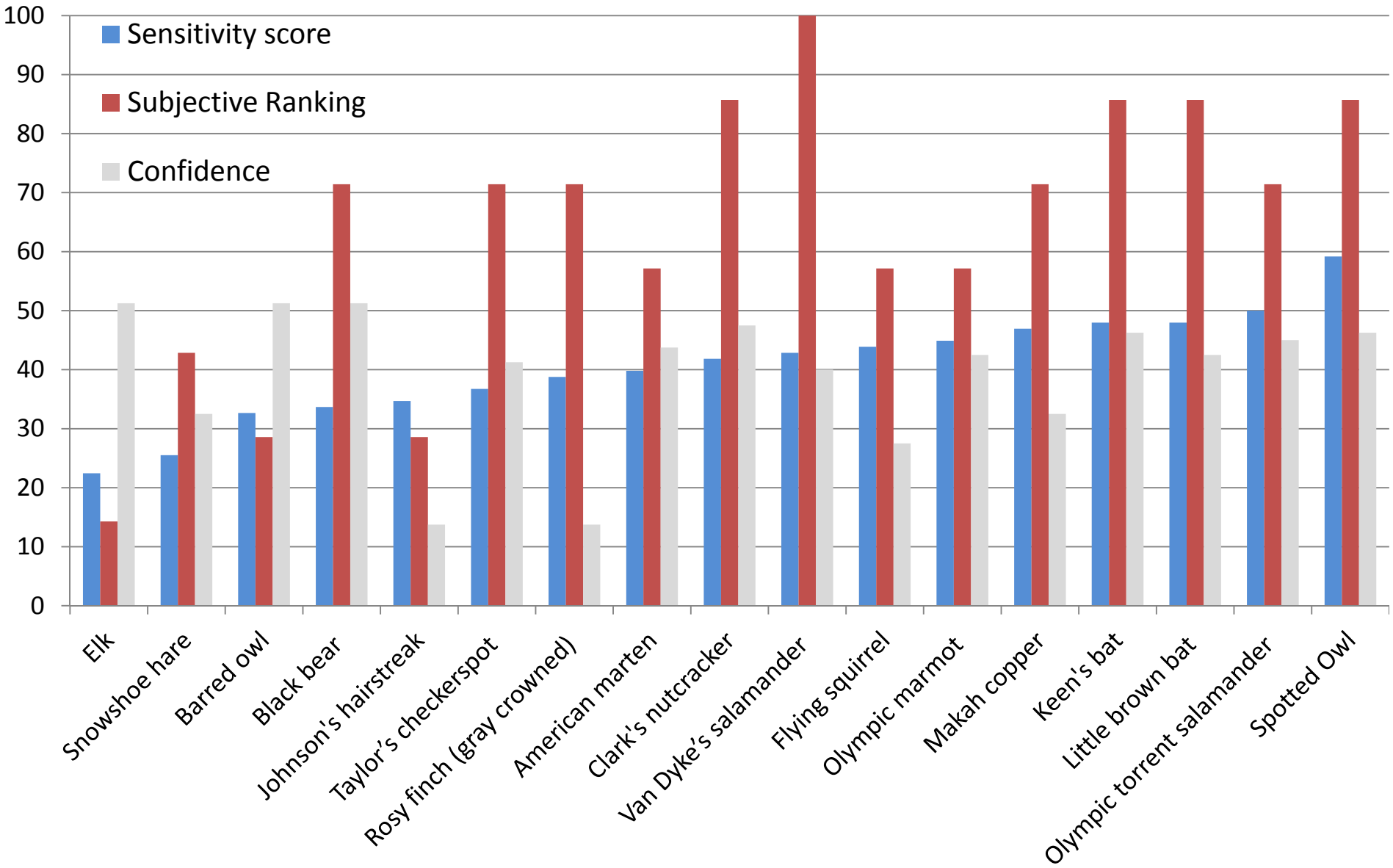
Freshwater

Marine

Estuary

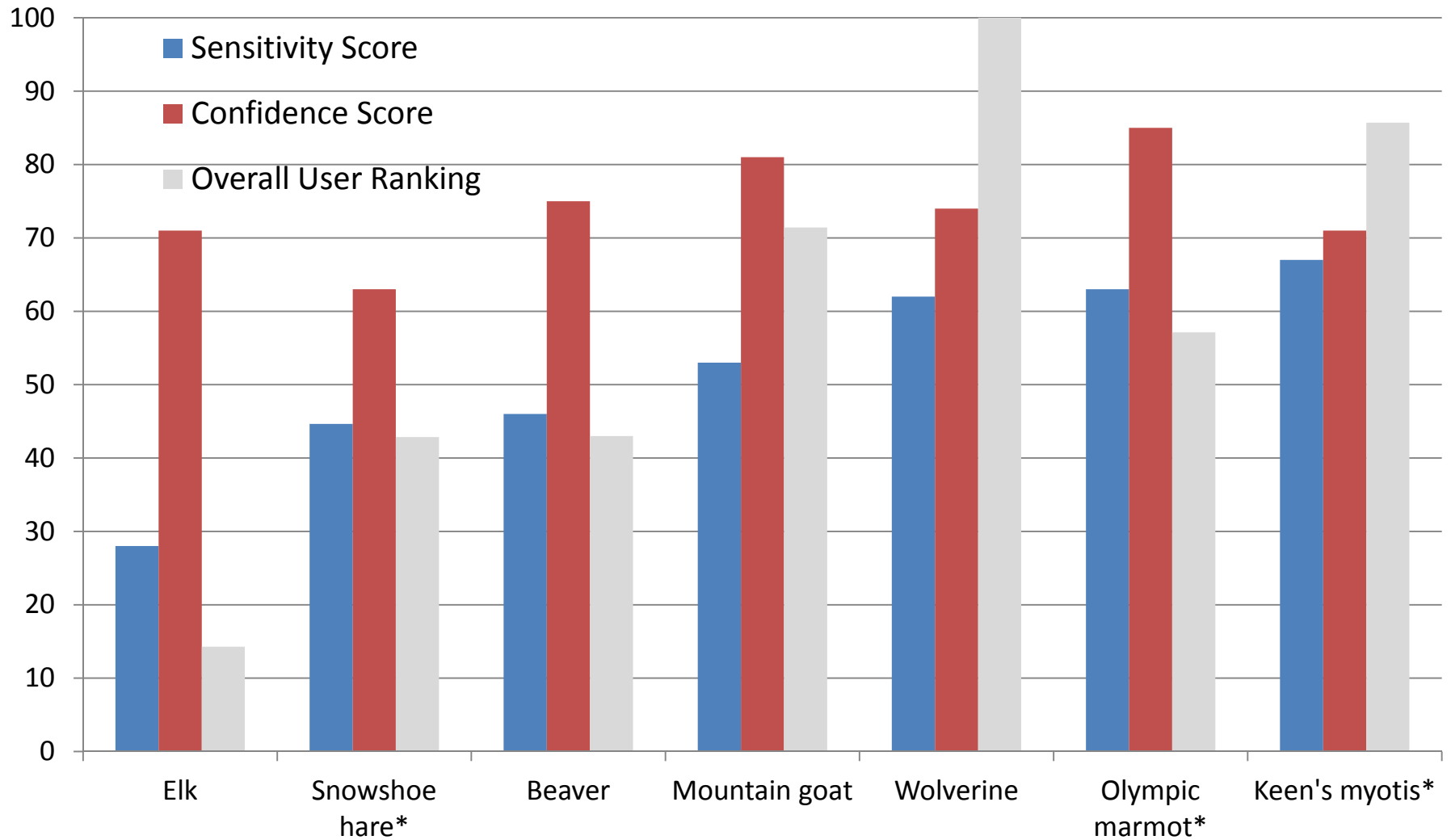


# Olympic Case Study



# NCAP Mammals

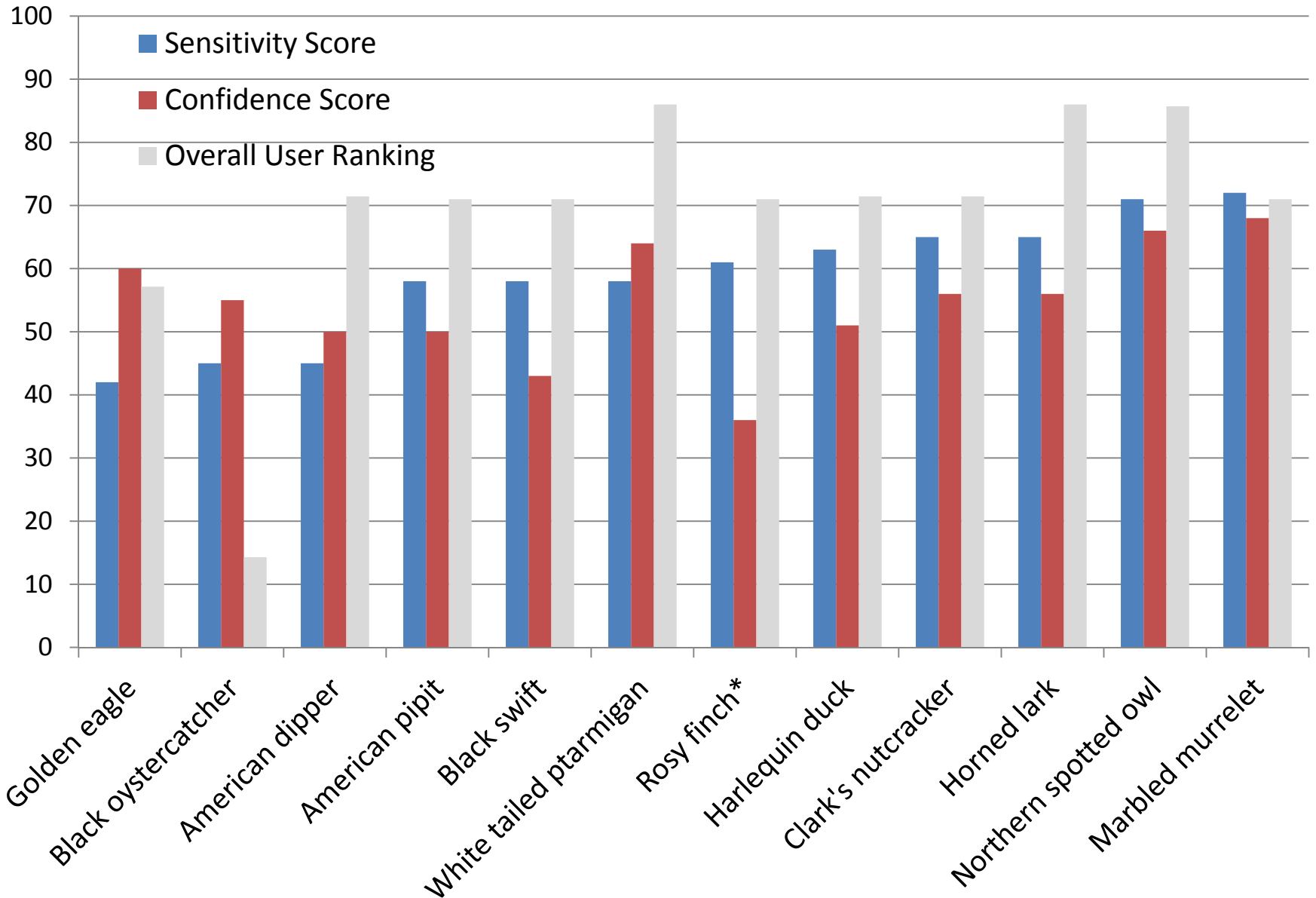
*9 of 16 priority spp completed (or nearly completed)*



\* Almost completed in database

# NCAP Birds

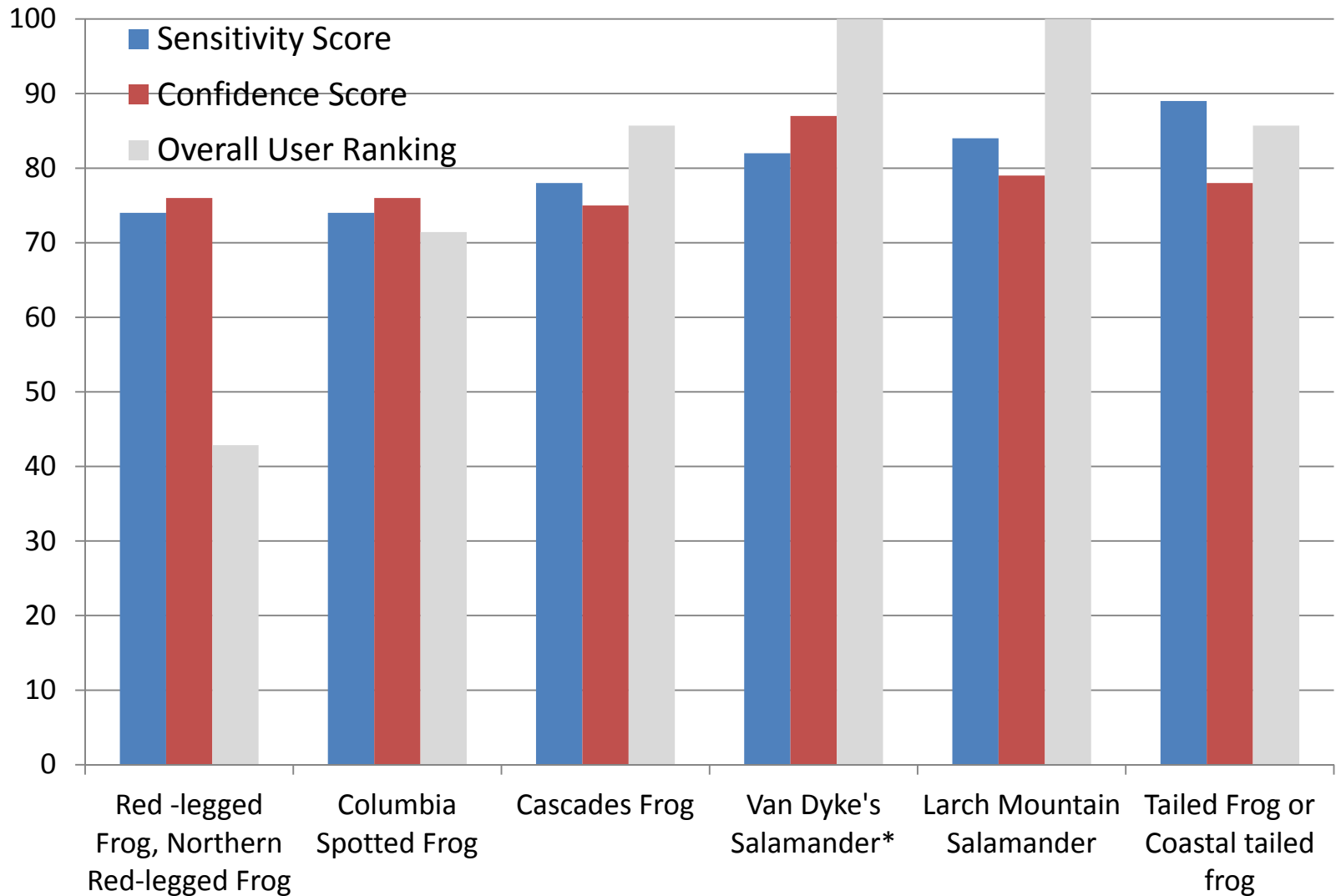
*12 of 12 priority spp completed  
(or nearly completed)*



\* Almost completed in database

# NCAP Amphibians

*6 of 16 priority spp completed (or nearly completed)*

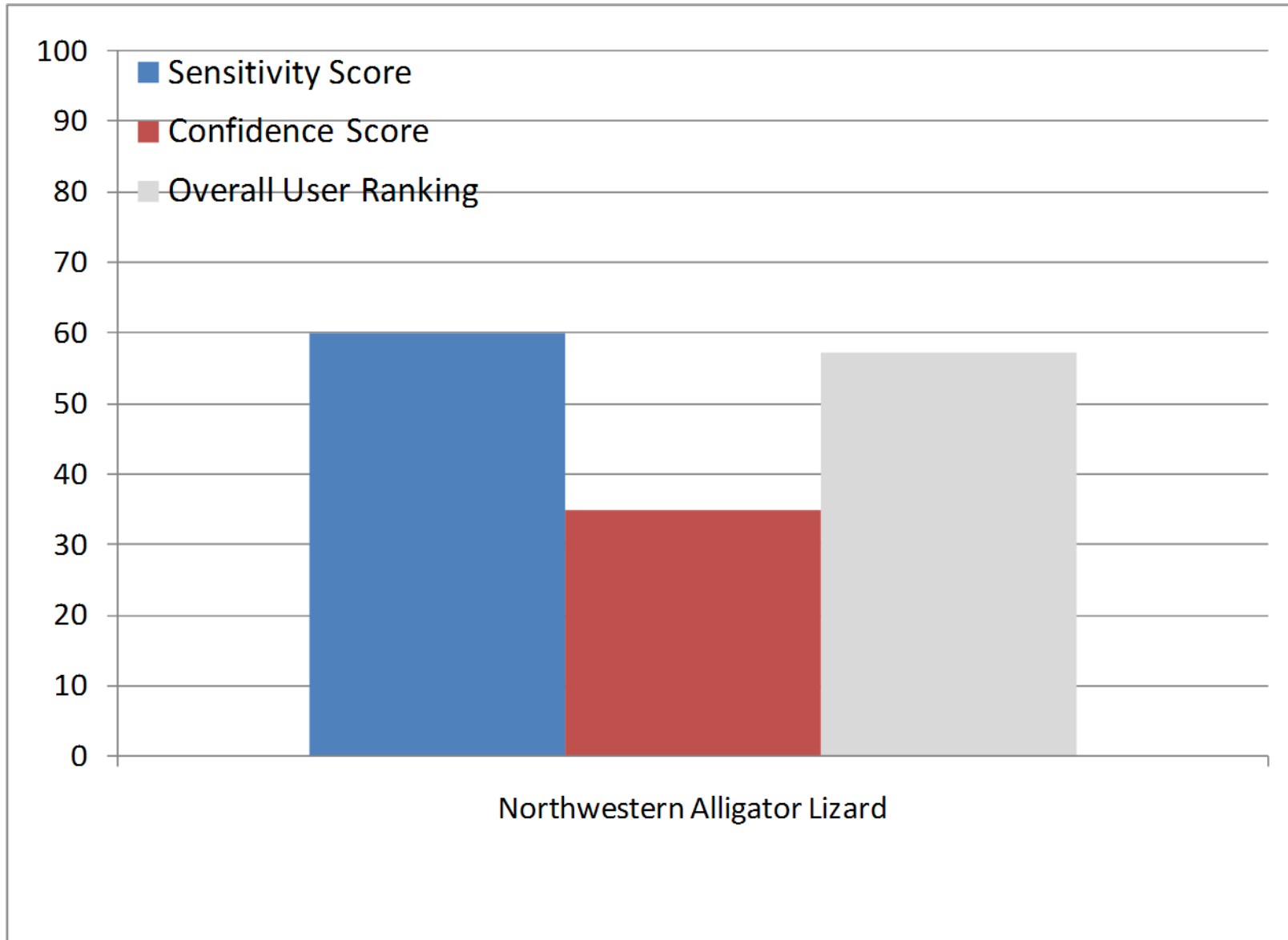


\* Almost completed in database



# NCAP Reptiles

*1 of 9 priority spp completed (or nearly completed)*



\* Almost completed in database